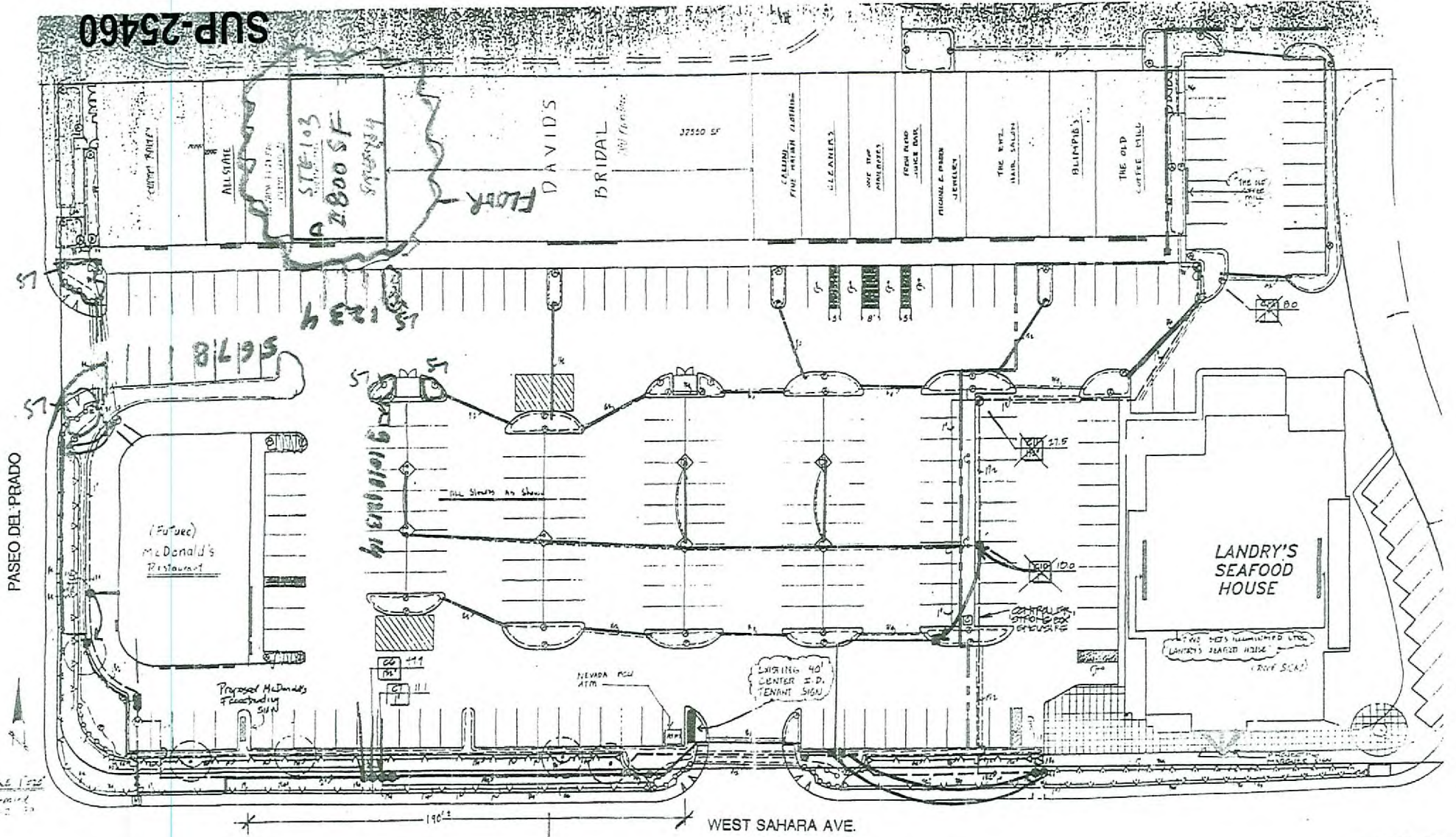


12/20/07 PC

SUP-25460



PASEO DEL PRADO

WEST SAHARA AVE.

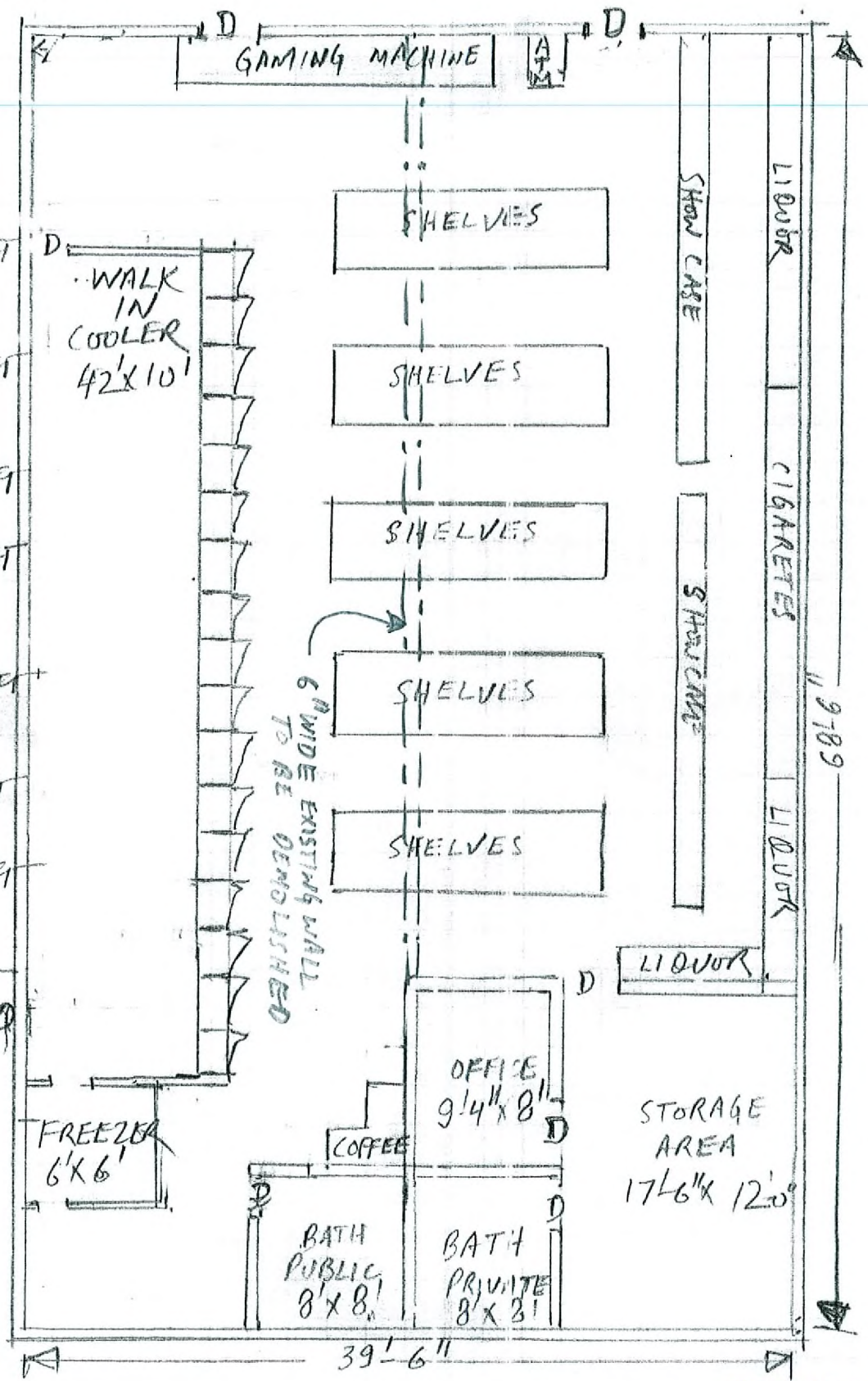
RECEIVED
NOV 5 2007

PARKING 9 RAMPAYS
 GTA SUITE 103 9104 = 280052.11
 PARKING 6 REQUIRED = 2800
 250 = 12ND
 PARKING PROVIDED = 19103

2600 W SAHARA
 STE 103, 104
 LAS VEGAS, NV 89102



- GROSS AREA 2800 SQ FT
- BATH 1 (+) 128 SQ FT ROOMS
- OFFICE (-) 75 SQ FT
- STORAGE (-) 210 SQ FT AREA
- WALK IN (-) 336 SQ FT COOLER
- FREEZER (-) 36 SQ FT
- GAMING (-) 30 SQ FT ATM
- NET AREA 1985 SQ FT



RECEIVED

2600 W. SAHARA, STE 103, 104
 LAS VEGAS 89102

NOV 05 2007

SUP-25460
 12/20/07 PC