

jawa
studio
ARCHITECTURE
INTERIOR DESIGN
108 E. Charleston Suite 106
Las Vegas NV 89104
Tel: 702.596.1724
Fax: 702.596.1724
mailto:info@jawa-studio.com
www.jawa-studio.com

PROJ: _____
DATE: _____
DRAWN: _____
CHECKED: _____

REVISIONS

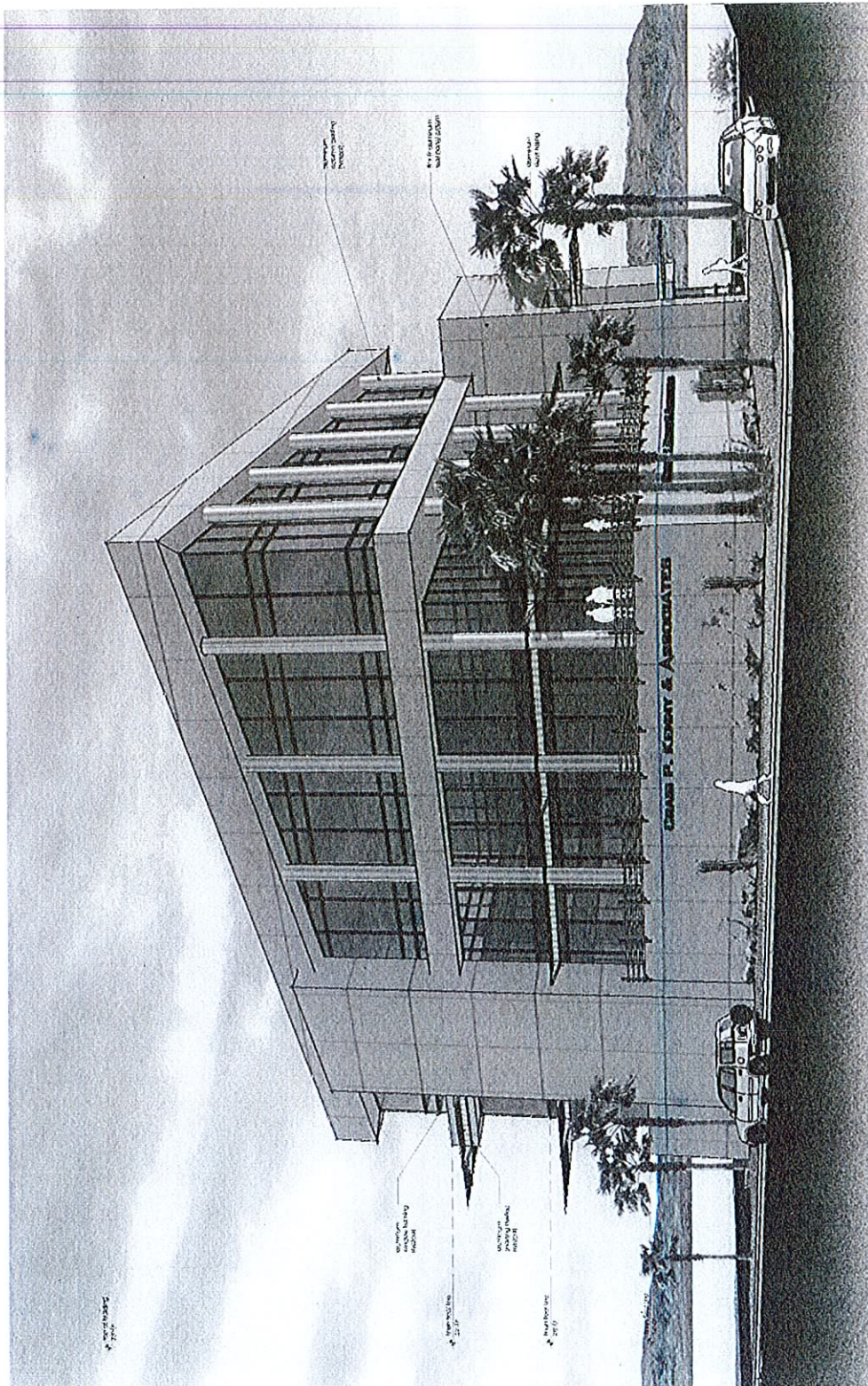
CONSTRUCTION DOCUMENTS FOR THE
Kenny Law Office
108 E. Charleston Suite 106
Las Vegas NV 89104
Tel: 702.596.1724
Fax: 702.596.1724
mailto:info@jawa-studio.com
www.jawa-studio.com

NO.	DESCRIPTION
1	
2	
3	
4	
5	
6	
7	
8	
9	
10	

Kenny Law Office
Clark Avenue & 8. Eighth Street
Las Vegas, NV
DATE: 12/20/07
DRAWN BY: JAWA
CHECKED BY: JAWA
PROJECT NO: 25343

north elevation
DATE: 12/20/07
DRAWN BY: JAWA
CHECKED BY: JAWA
PROJECT NO: 25343

A4.3
DATE: 12/20/07
DRAWN BY: JAWA
CHECKED BY: JAWA
PROJECT NO: 25343



A1 north elevation
SDR-25343
12/20/07 PC

OCT 2 2007



**SDR-25343 - APPLICANT/OWNER: CRAIG P. AND ELLEN KAY KENNY
SOUTHEAST CORNER OF CLARK AVENUE AND 8TH STREET
DECEMBER 20, 2007 PLANNING COMMISSION**

12/04/07



**SDR-25343 - APPLICANT/OWNER: CRAIG P. AND ELLEN KAY KENNY
SOUTHEAST CORNER OF CLARK AVENUE AND 8TH STREET
DECEMBER 20, 2007 PLANNING COMMISSION**

12/04/07



**SDR-25343 - APPLICANT/OWNER: CRAIG P. AND ELLEN KAY KENNY
SOUTHEAST CORNER OF CLARK AVENUE AND 8TH STREET
DECEMBER 20, 2007 PLANNING COMMISSION**

12/04/07