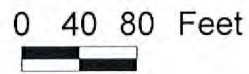
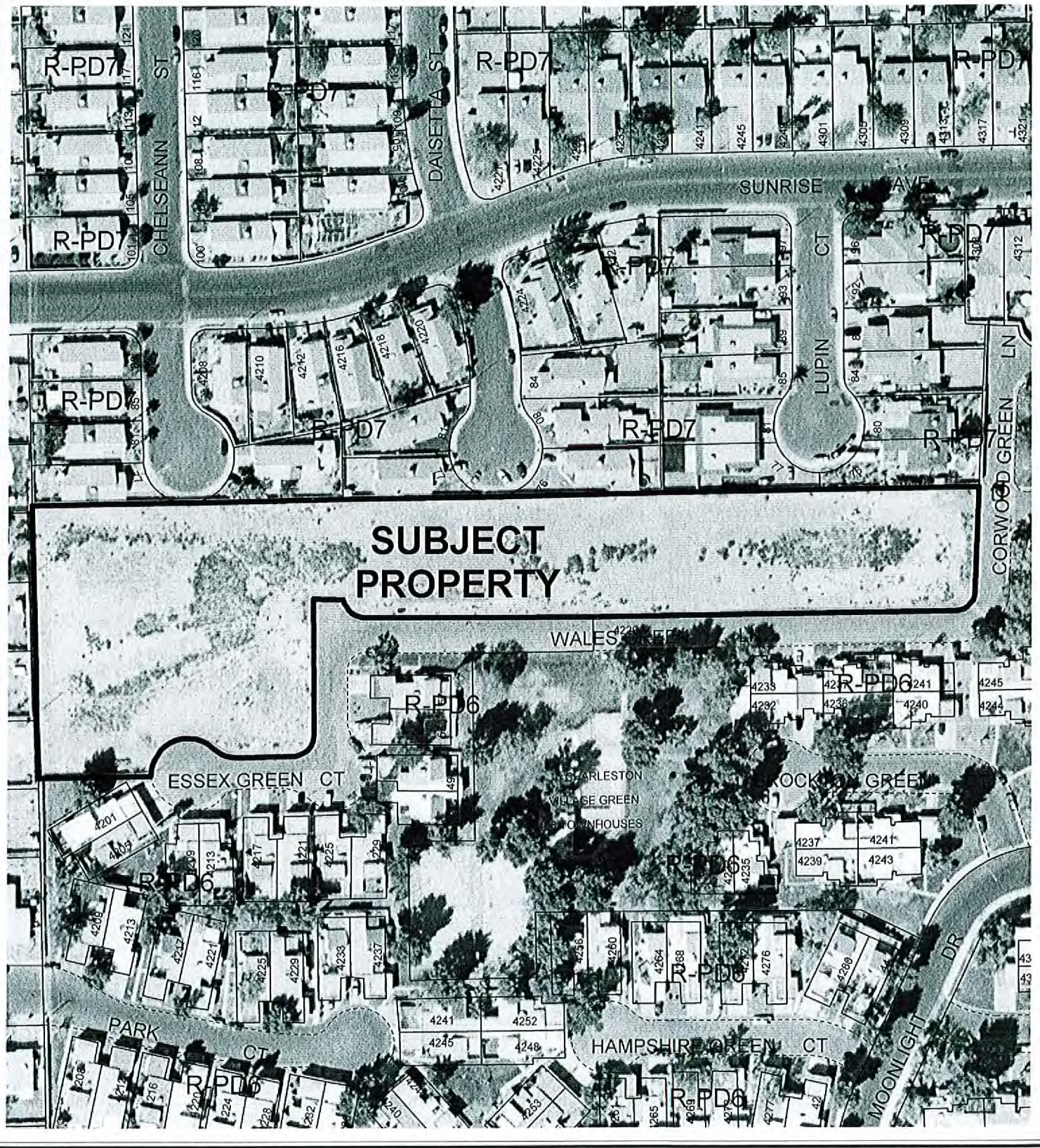


CASE: **EOT-26156**

ZONING OF SUBJECT PROPERTY:

R-1 (SINGLE-FAMILY RESIDENTIAL) ZONE UNDER RESOLUTION OF INTENT TO R-PD11
 (RESIDENTIAL PLANNED DEVELOPMENT - 11 UNITS PER ACRE)





CASE: EOT-26156

ZONING OF SUBJECT PROPERTY:

R-1 (SINGLE-FAMILY RESIDENTIAL) ZONE UNDER RESOLUTION OF INTENT TO R-PD11 (RESIDENTIAL PLANNED DEVELOPMENT - 11 UNITS PER ACRE)

