

### SITE DATA

#### BUILDING SQUARE FOOTAGES

RESTAURANT		28,000 S.F.
SUPPER CLUB		18,270 S.F. OF RESTAURANT
RETAIL		32,316 S.F.
OFFICE		71,317 S.F.
BANK		3,387 S.F.
TOTAL		135,020 S.F.
OUTDOOR SEATING		1,800 S.F.

#### PARKING REQUIRED

RESTAURANT W/ SUPPER CLUB	1/50 PUBLIC SEATING AND WAITING + 1/200 FOR GFA.	370 SPACES 48 SPACES B.O.H. 418 SPACES
OUTDOOR SEATING	BLDG 14,9 1,800 S.F. 1/50 GFA.	36 SPACES
RETAIL	1/250 GFA	130 SPACES
OFFICE	1/300 GFA	238 SPACES
BANK	1/300 GFA	17 SPACES
TOTAL PARKING REQUIRED		839 SPACES
H.C. ACCESSIBLE SPACES REQUIRED		15 SPACES
VAN ACCESSIBLE		2 SPACES

#### PARKING PROVIDED

TOTAL SHARED PARKING	522 S.F.
H.C. ACCESSIBLE SPACES	15 SPACES
VAN ACCESSIBLE	2 SPACES

MASTER PLAN  
THE VILLAGE OF CENTENNIAL SPRINGS

PROJECT: CHAIR  
DATE: 07-25-05



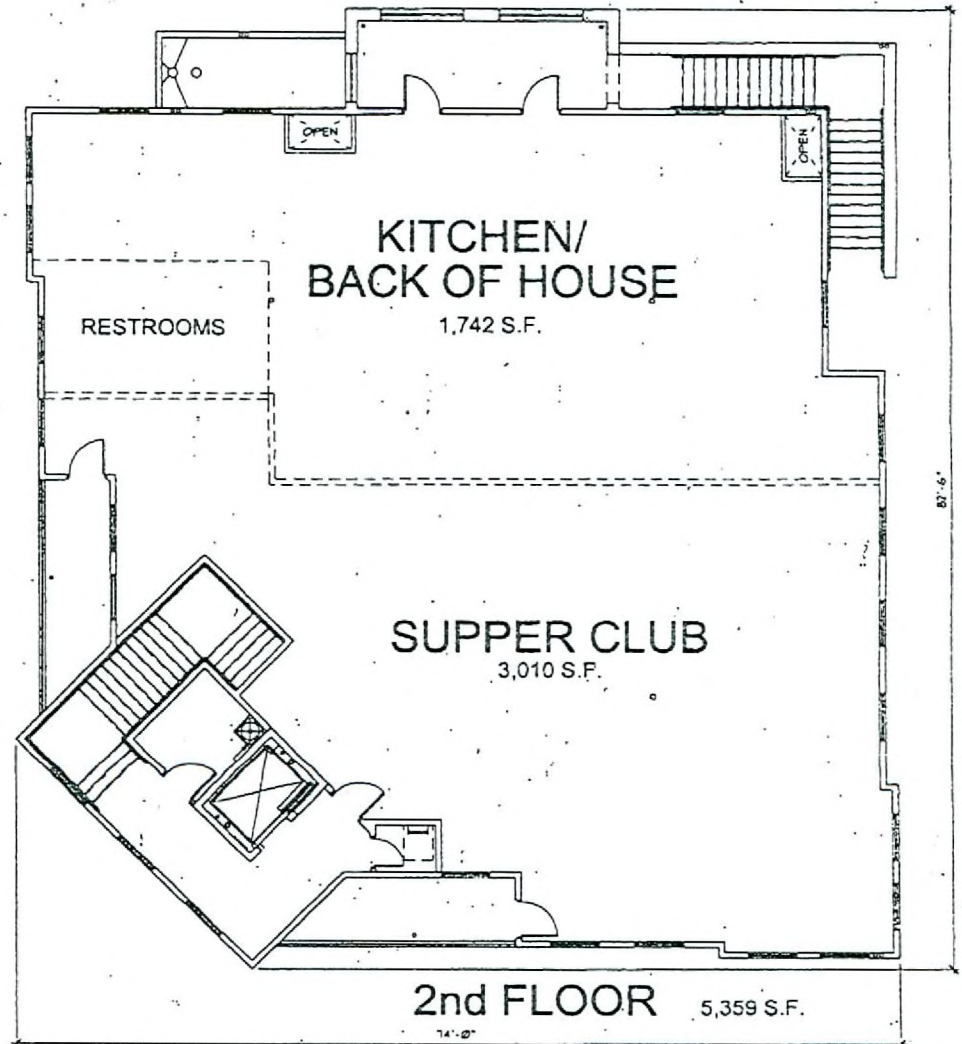
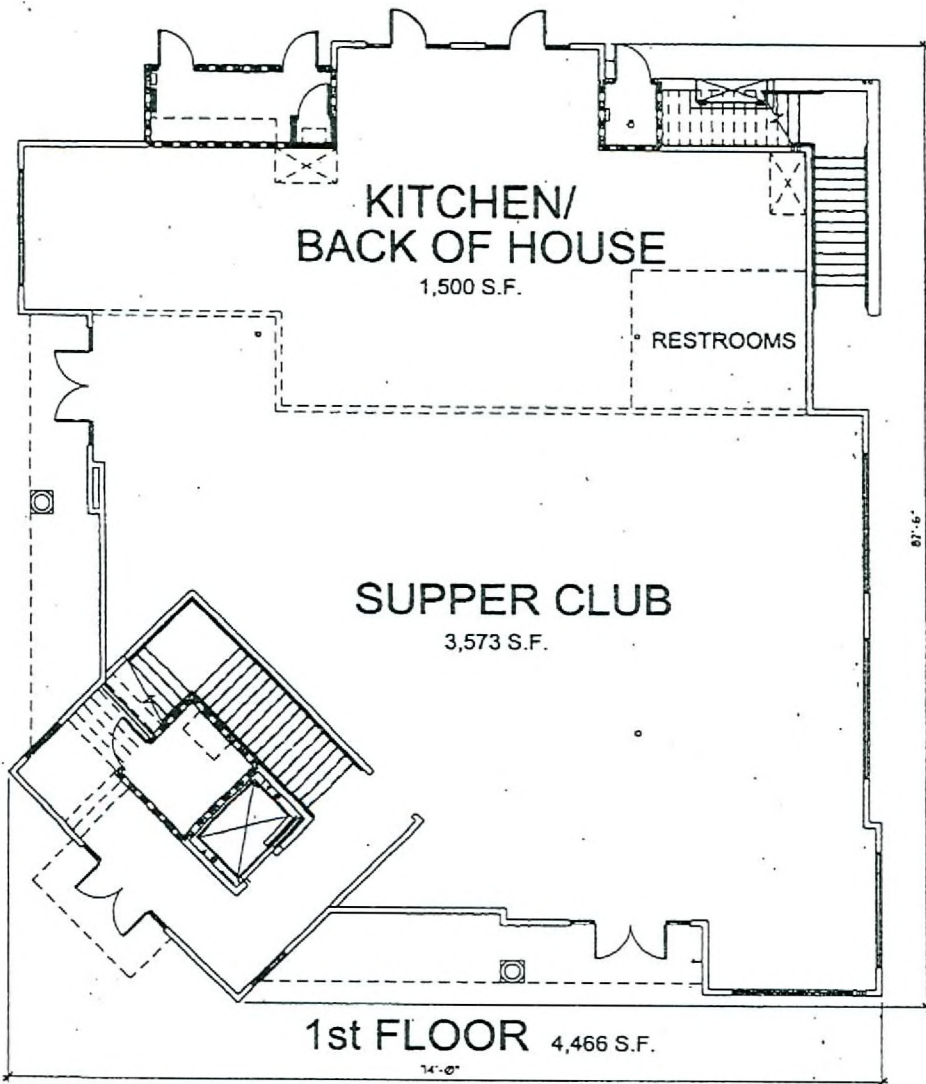
CARPENTER SELLERS ASSOCIATES  
ARCHITECTS • DESIGN • INTERIORS  
700 E. JONES - SUITE C - LAS VEGAS, NV 89119  
702-251-8800 • FAX: 702-251-8801 • WWW.CSADIRECT.COM

SHEET

SD-1

EOT-25834  
01/16/08 CC

RECEIVED  
DEC 03 2007



**FLOOR PLANS**

**THE VILLAGE OF CENTENNIAL SPRINGS**

**BUILDING #4**

PROJECT  
DATE: 08/12/05

0' 5' 10'  
SCALE: 1" = 10'-0"

**EOT-25834**  
**01/16/08 CC**

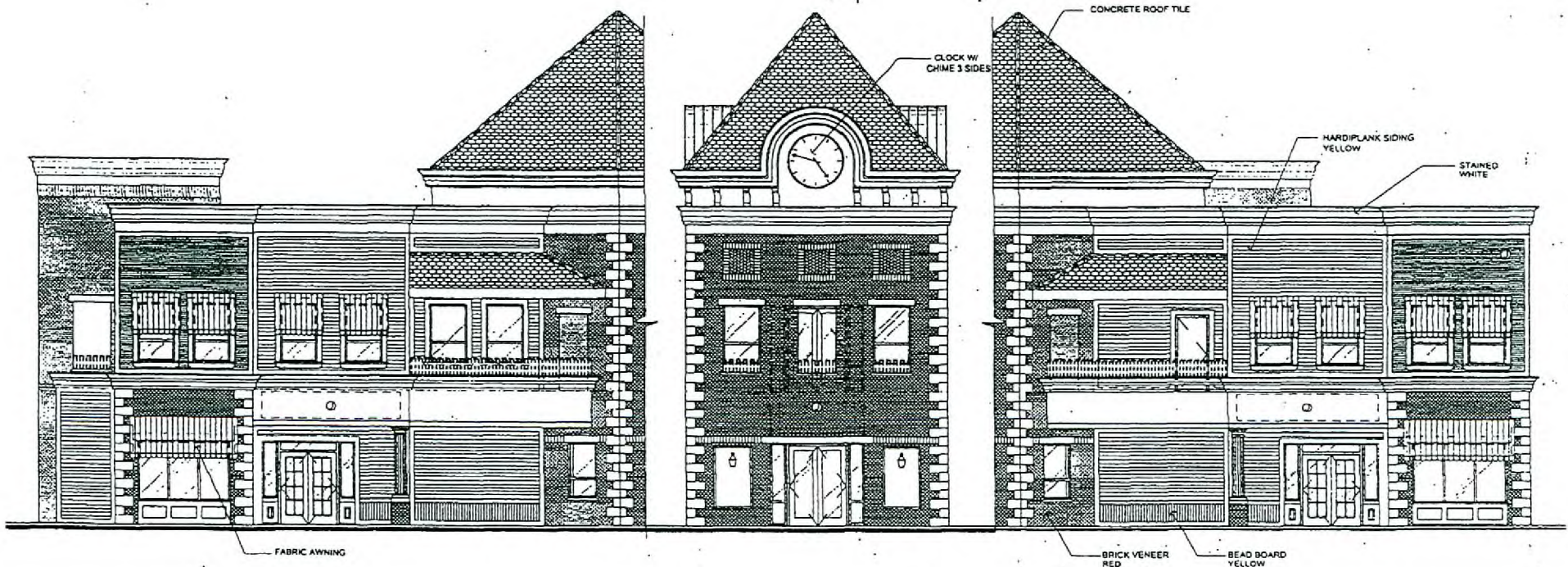
**BUILDING AREA**  
TOTAL: 9,825 S.F.

**LEDS ASSOCIATES**  
DESIGN SERVICES  
P.O. BOX 1000, WYOMING  
STATE - WWW.LEDSASSOCIATES.COM

**THE SD-3**

RECEIVED

DEC 03 2007



ELEVATIONS

THE VILLAGE OF CENTENNIAL SPRINGS

BUILDING #4

PROJECT  
DATE: 06/07/05

SCALE: 1/4" = 1'-0"



CARPENTER SELLERS ASSOCIATES

SHEET

SD-3E

EOT-25834  
01/16/08 CC

RECEIVED  
DEC 03 2007