

kalwall glazing system

cmu wall

multi-hue brick

concrete tilt-up panel

**Frazer
log jam - cl 2597n**

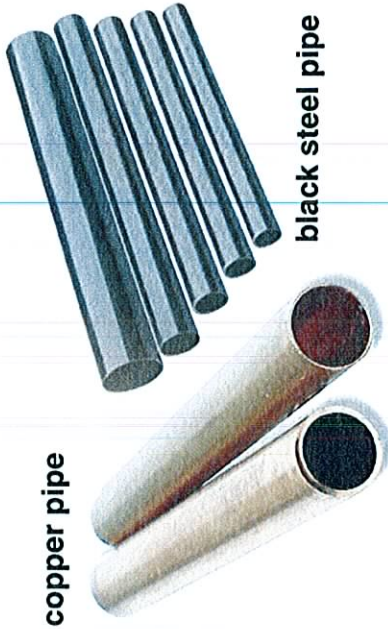
metal clad siding

solar pv panel

corrugated metal siding

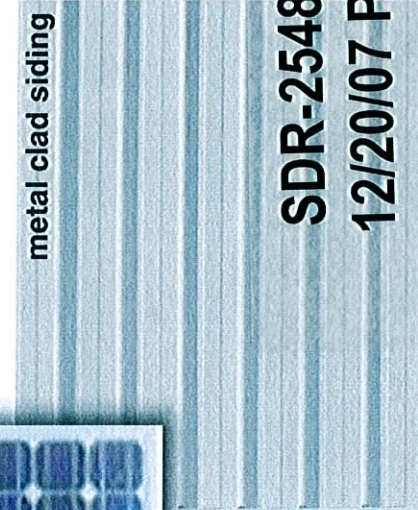
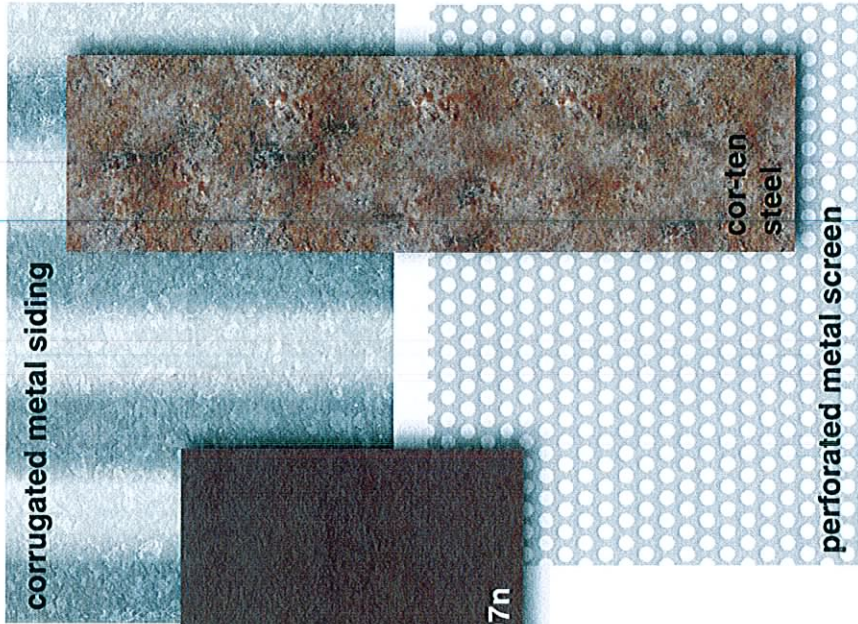
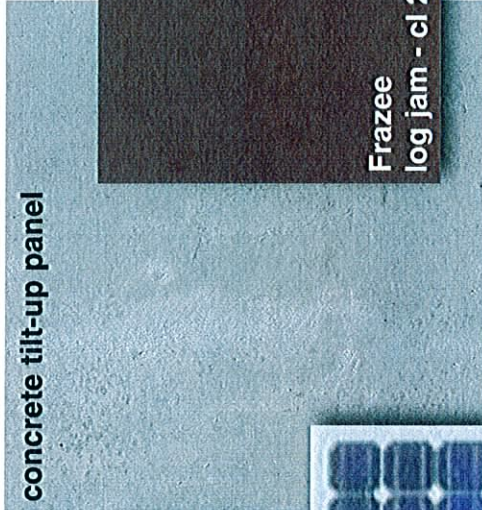
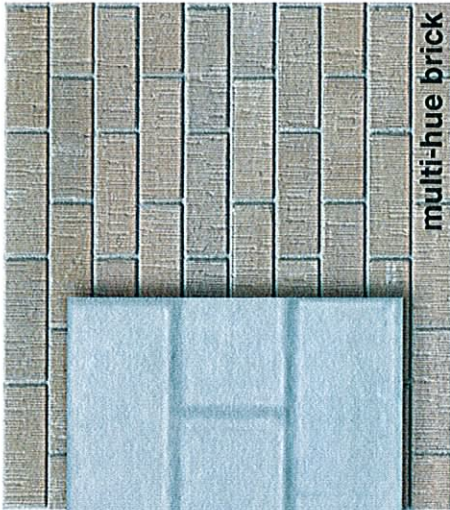
**cor-ten
steel**

perforated metal screen



copper pipe

black steel pipe



**SDR-25482
12/20/07 PC**

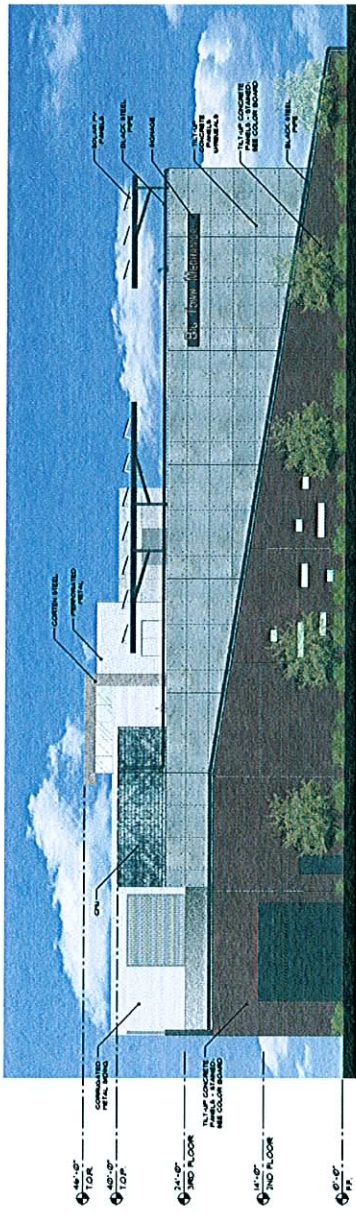
RECEIVED

NOV 06 2007

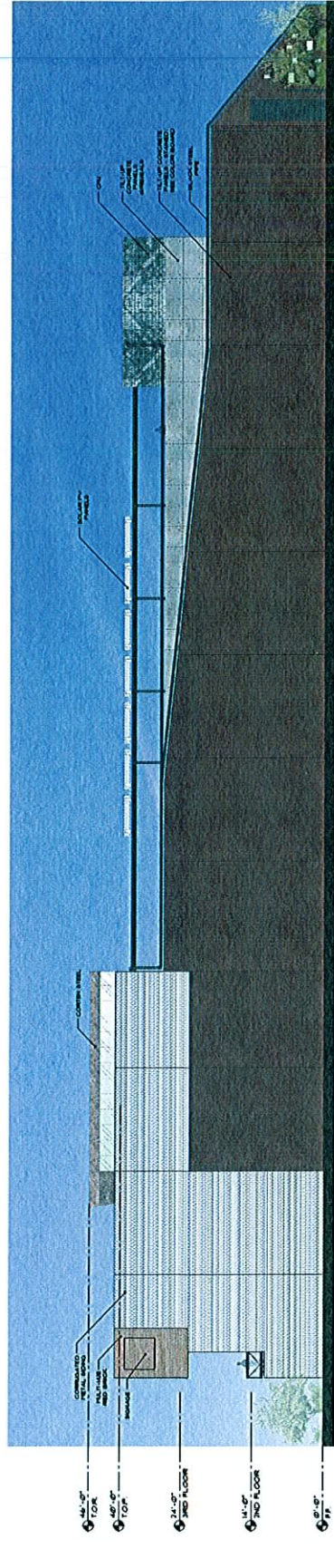
trp inc.
architecture
planning
interiors

THE RICHARDSON PARTNERSHIP, INC.
815 PILOT ROAD SUITE E, LOS VEGAS, NEVADA 89119
PHONE: 702.736.8822 FAX: 702.736.8855
E-mail: mail@trp-architect.com

BIG TOWN MECHANICAL HEADQUARTERS



WEST ELEVATION



NORTH ELEVATION

ELEVATIONS

NOVEMBER 2007



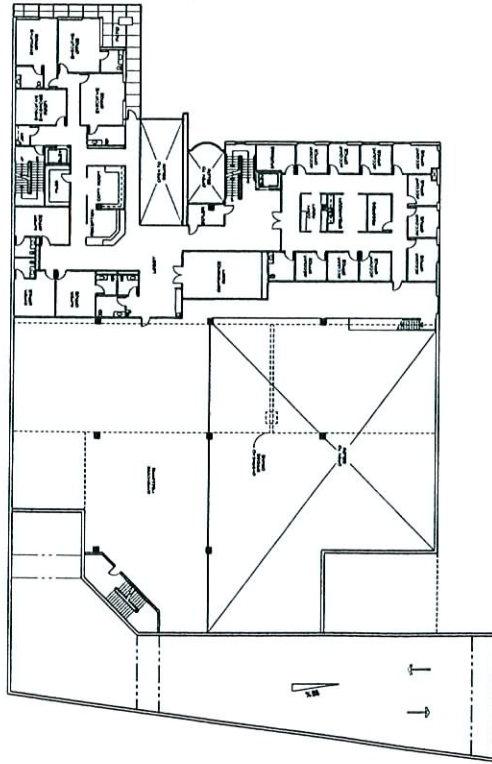
LAS VEGAS - NEVADA

BIG TOWN MECHANICAL HEADQUARTERS

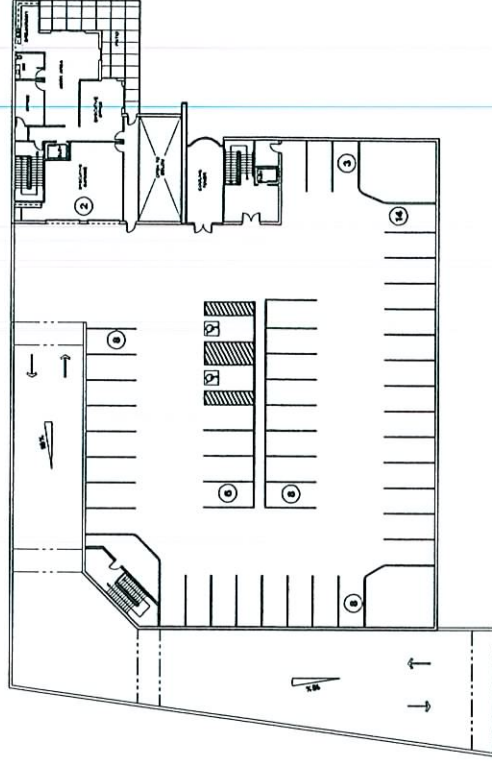
itp inc. ARCHITECTURE
 INTERIOR DESIGN
 11111 WINDMILL CIRCLE, SUITE 100, LAS VEGAS, NV 89135
 PHONE: (702) 735-1100 FAX: (702) 735-1101

SDR-25482
12/20/07 PC

RECEIVED
NOV 06 2007



SECOND FLOOR PLAN
SCALE: 1" = 30'-0"



THIRD FLOOR PLAN
SCALE: 1" = 30'-0"



LAS VEGAS - NEVADA

NOVEMBER 2007

BIG TOWN MECHANICAL HEADQUARTERS

RECEIVED

NOV 01 6 2007

SDR-25482

12/20/07 PC

SDR 25482				
BBH, LLC				
1924, 1930, & 2004 Western Ave.				
Proposed 48.2 thousand square foot light manufacturing facility.				
Traffic produced by proposed development:				
New Use	DESCRIPTION	#UNIT	RATE/# UNIT	TOTAL
Average Daily Traffic (ADT)	MANUFACTURING [1000 SF]	48.2	3.82	184
AM Peak Hour			0.73	35
PM Peak Hour			0.74	36
<i>(heaviest 60 minutes)</i>				
Existing traffic on all nearby streets:				
Oakey Blvd.				
Average Daily Traffic (ADT)	18,347			
PM Peak Hour	1,468			
<i>(heaviest 60 minutes)</i>				
Western Ave.				
Average Daily Traffic (ADT)	9,476			
PM Peak Hour	758			
<i>(heaviest 60 minutes)</i>				
Traffic Capacity of adjacent streets:				
	Adjacent street ADT			
	Capacity			
Oakey Blvd.	32585			
Western Ave.	16200			
This project will add approximately 184 trips per day on Oakey Blvd. and Western Ave. This will increase expected volumes by about 1 percent on Oakey and by about 2 percent on Western. Oakey is at about 56 percent of capacity and Western is at about 59 percent of capacity.				
Based on Peak Hour use, this development will add roughly 36 additional cars into the area; which works out to about 3 every 5 minutes.				
Note that this report assumes all traffic from this development uses all named streets.				