

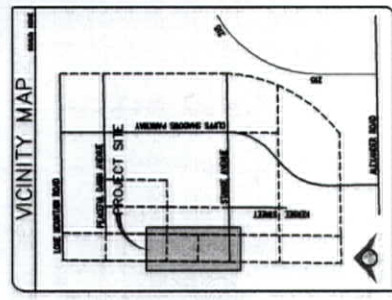
DATE	BY	REVISION

DATE: 1/24/08
 DRAWN BY: J. [unreadable]
 CHECKED BY: [unreadable]
 DESIGNED BY: [unreadable]
 SCALE: 1" = 100'-0"
 PROJECT: [unreadable]



TRITON Engineering
 6737 W. Chatham Blvd.
 Littleton, Colorado 80120
 (303) 752-2400
 FAX: (303) 752-2400
 E-MAIL: info@tritoneng.com
 WWW: www.tritoneng.com

LONE MOUNTAIN / PUU
 OVERALL SITE PLAN
 SHEET 2 OF 2
 CLV DREF



PARKING ANALYSIS
 NUMBER OF 4-BAY SPACES = 228
 NUMBER OF 2-BAY SPACES = 43
 NUMBER OF 3-BAY SPACES = 10
 NUMBER OF 5-BAY SPACES = 10
 TOTAL PARKING SPACES = 311
 TOTAL PARKING PROVIDED = 311

BACK OF CURB MARKS AT EACH INTERSECTION FOR FIRE ACCESS
 ALL DRAINAGE EASEMENTS SHOWN ON PLAN ARE TO BE CONSIDERED AS PERMITTED TO BE PROVIDED UNLESS OTHERWISE NOTED

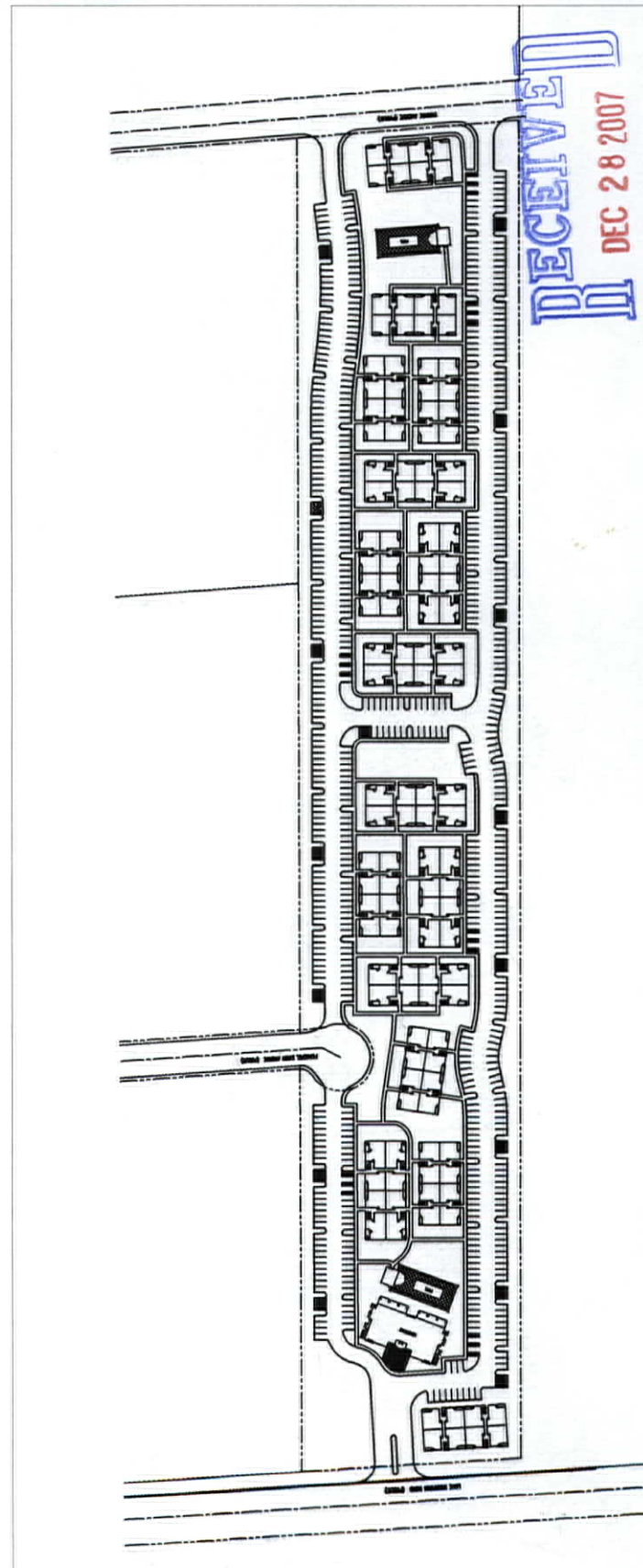
ACREAGE
 ACRES = 16.48
 SQUARE FEET = 360,000
 TOTAL ACRES PROVIDED = 16.48

BASIS OF BEARING
 BEARINGS ARE BASED ON THE NORTH SOUTHERN CROSSING AT THE INTERSECTION OF PARKWAY LANE AND LONE MOUNTAIN BLVD. THE BEARING OF PARKWAY LANE IS 110° 00' 00" AND THE BEARING OF LONE MOUNTAIN BLVD. IS 20° 00' 00".

OPEN SPACE CALCS
 Open Space Required = 16.48 x 10% = 1.648 Acres
 Open Space Provided = 16.48 - 1.648 = 14.832 Acres

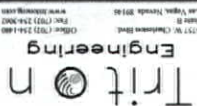


BENCHMARK
 ONE OF THE THREE BENCHMARK STATIONS - STATION 100.000 IS THE BENCHMARK FOR THE PROJECT. THE BENCHMARK IS A CONCRETE PIPER STATION SET IN THE GROUND AT THE INTERSECTION OF PARKWAY LANE AND LONE MOUNTAIN BLVD.

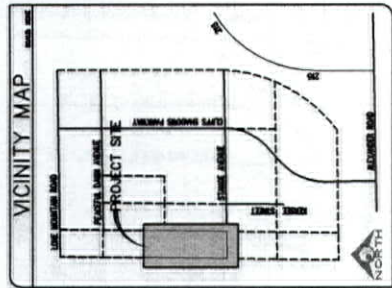


RECEIVED
 DEC 28 2007

MOD-25974
 REVISED
 01/24/08 PC



LONE MOUNTAIN / PUU
SITE PLAN II



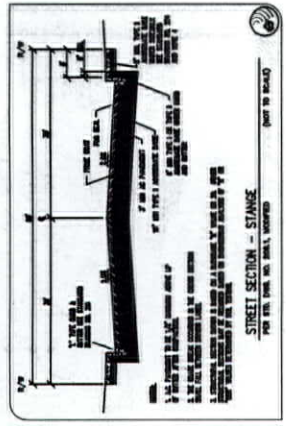
PARKING ANALYSIS

NUMBER OF 2-SPACE SPOTS = 250
 NUMBER OF 3-SPACE SPOTS = 40
 TOTAL SPOTS = 290
 TOTAL PARKING REQUIRED = 280
 TOTAL SPOTS PROVIDED = 290

BACK OF CURB SHALL BE AT EACH INTERSECTION IS 20' FOR FIRE ACCESS
 ALL DRAINAGE FACILITIES SHALL BE SHOWN ON PLAN AND TO BE CONFORMING TO ALL APPLICABLE REGULATIONS TO BE PROVIDED & MAINTAINED

ACREAGE

AREA = 14.4
 INCLUDING SPOTS = 286
 DENSITY = 70
 (2.5-3 STREET PARKING PROVIDED)

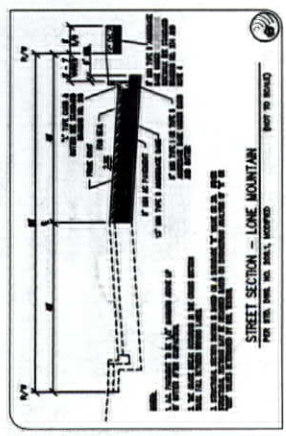


BENCHMARK

ONE (1) OF ALL THE BENCHMARKS SHOWN - BENCHMARK SHALL BE THE POINT OF REFERENCE FOR ALL THE DIMENSIONS SHOWN ON THIS PLAN. THE BENCHMARK SHALL BE THE POINT OF REFERENCE FOR ALL THE DIMENSIONS SHOWN ON THIS PLAN. THE BENCHMARK SHALL BE THE POINT OF REFERENCE FOR ALL THE DIMENSIONS SHOWN ON THIS PLAN.

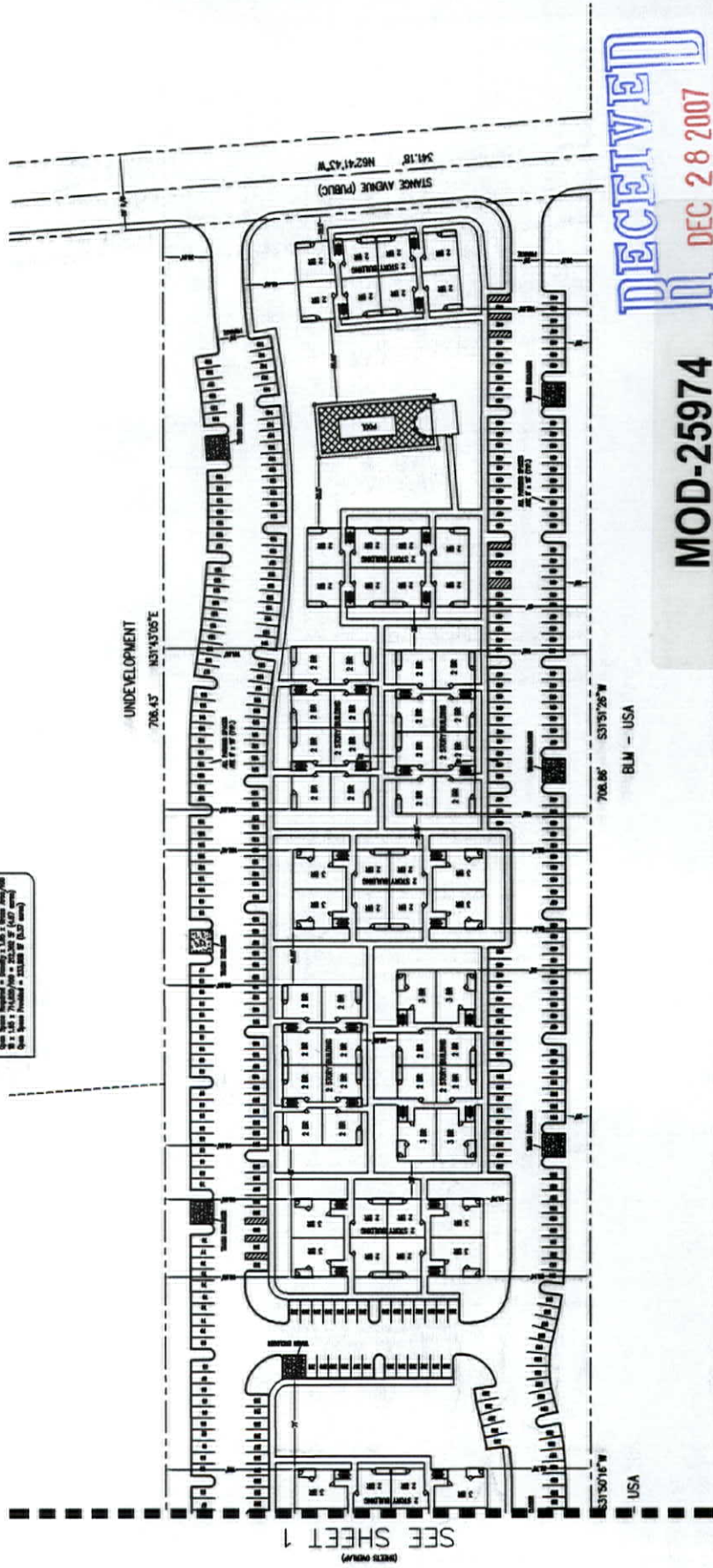
OPEN SPACE CALCS

Open Space Required = 25000 sq ft
 Open Space Provided = 25000 sq ft



BASIS OF BEARING

THE BASIS OF BEARING FOR ALL THE DIMENSIONS SHOWN ON THIS PLAN IS THE BASIS OF BEARING FOR ALL THE DIMENSIONS SHOWN ON THIS PLAN. THE BASIS OF BEARING FOR ALL THE DIMENSIONS SHOWN ON THIS PLAN IS THE BASIS OF BEARING FOR ALL THE DIMENSIONS SHOWN ON THIS PLAN.

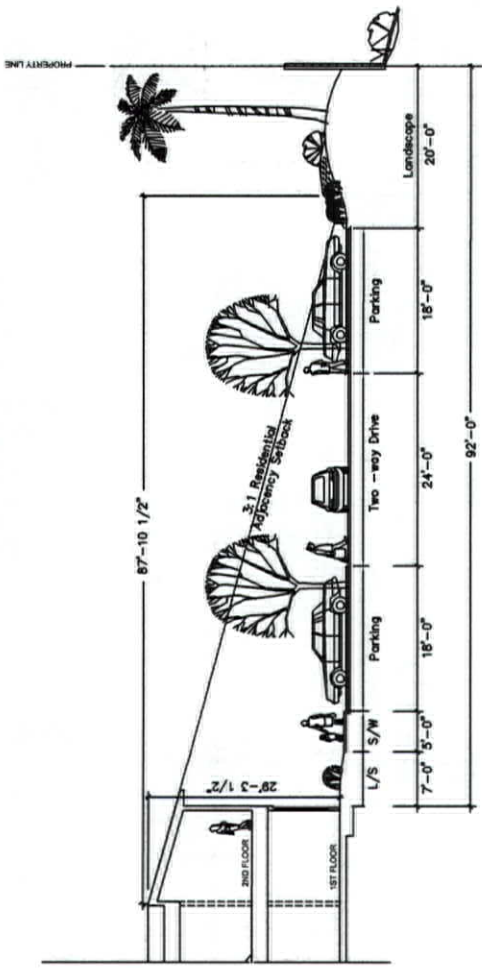


RECEIVED
DEC 28 2007

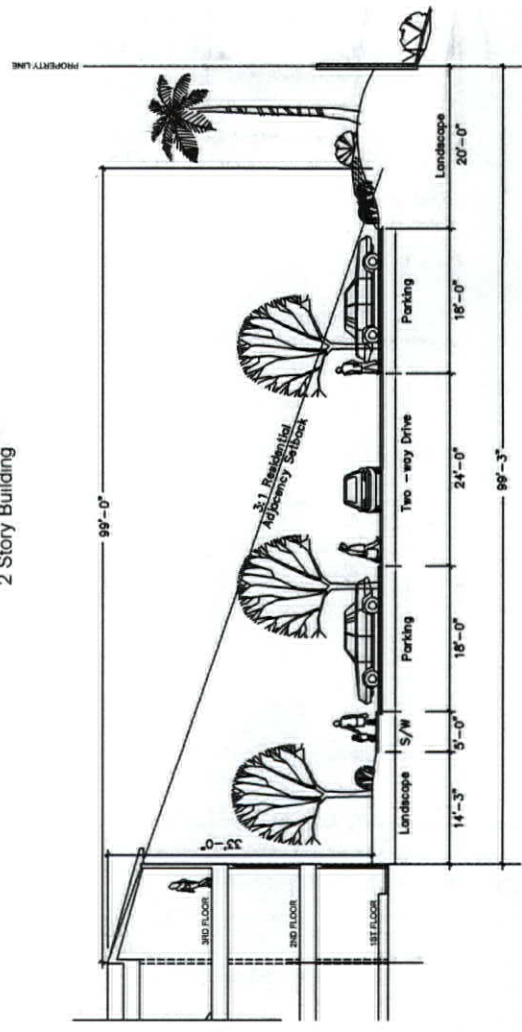
MOD-25974
REVISED
01/24/08 PC

BLM - USA

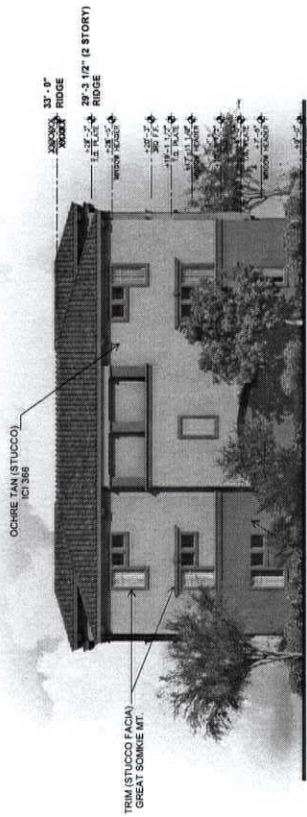
SEE SHEET 1



2 Story Building

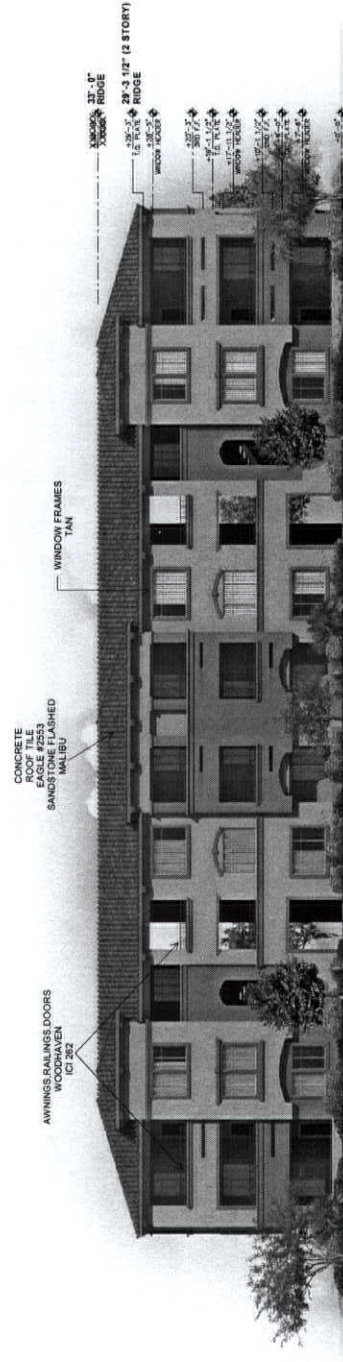


3 Story Building



ICI 306
ICI 386

SIDES



ICI 262

FRONT

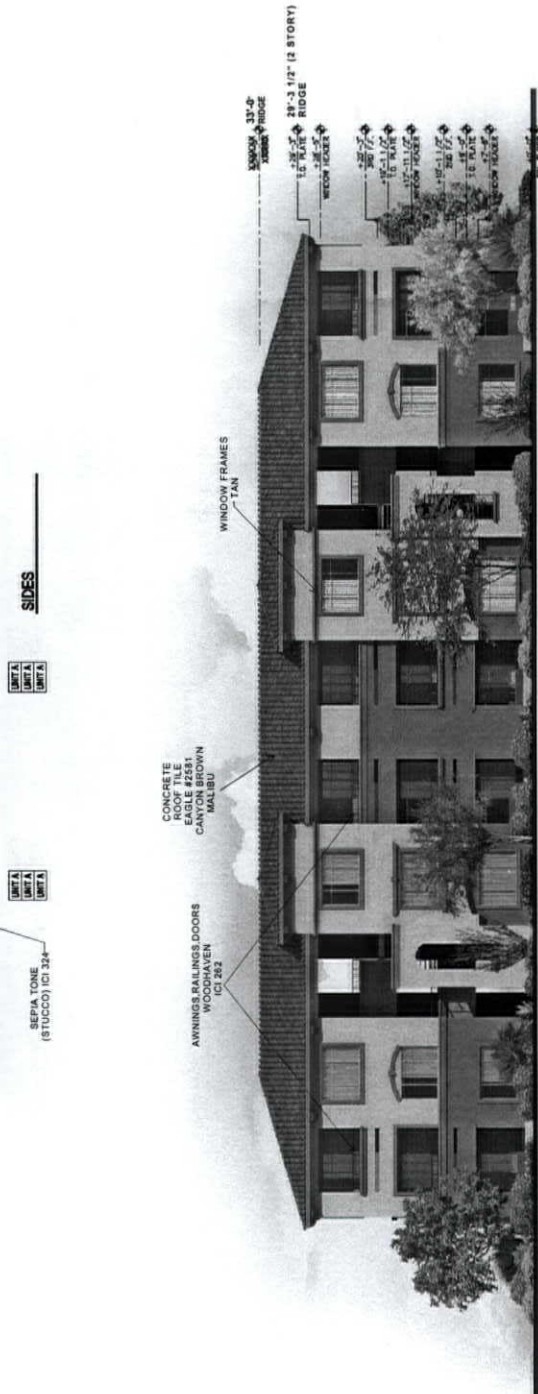
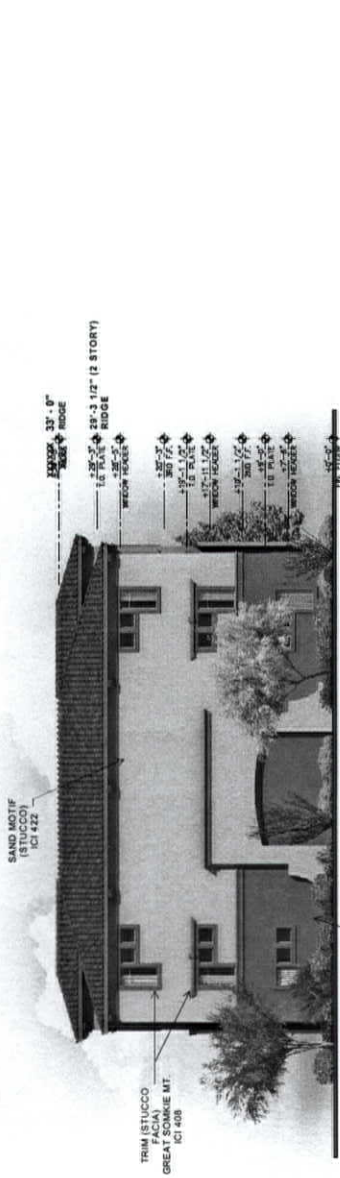
ICI 262

FRONT

ELEVATION: BUILDING 1
LONE MOUNTAIN/PULI MULTIFAMILY

MOD-25974
REVISED
01/24/08 PC

RECEIVED
DEC 28 2007



ELEVATION: BUILDING 2
 LONE MOUNTAIN/PULI MULTIFAMILY

RECEIVED
 DEC 28 2007

MOD-25974
 REVISED
 01/24/08 PC