



PLANNING & DEVELOPMENT DEPARTMENT

STATEMENT OF FINANCIAL INTEREST

Case Number: **SDR-21998** APN: 162-08-410-001

Name of Property Owner: World Wellness Group, LLC

Name of Applicant: _____

Name of Representative: _____

To the best of your knowledge, does the Mayor or any member of the City Council or Planning Commission have any financial interest in this or any other property with the property owner, applicant, the property owner or applicant's general or limited partners, or an officer of their corporation or limited liability company?

Yes


No

If yes, please indicate the member of the City Council or Planning Commission who is involved and list the name(s) of the person or persons with whom the City Official holds an interest. Also list the Assessor's Parcel Number if the property in which the interest is held is different from the case parcel.

City Official: _____

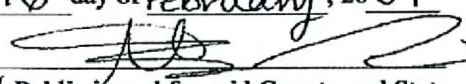
Partner(s): _____

APN: _____

Signature of Property Owner: 

Print Name: Ryan Grauberger

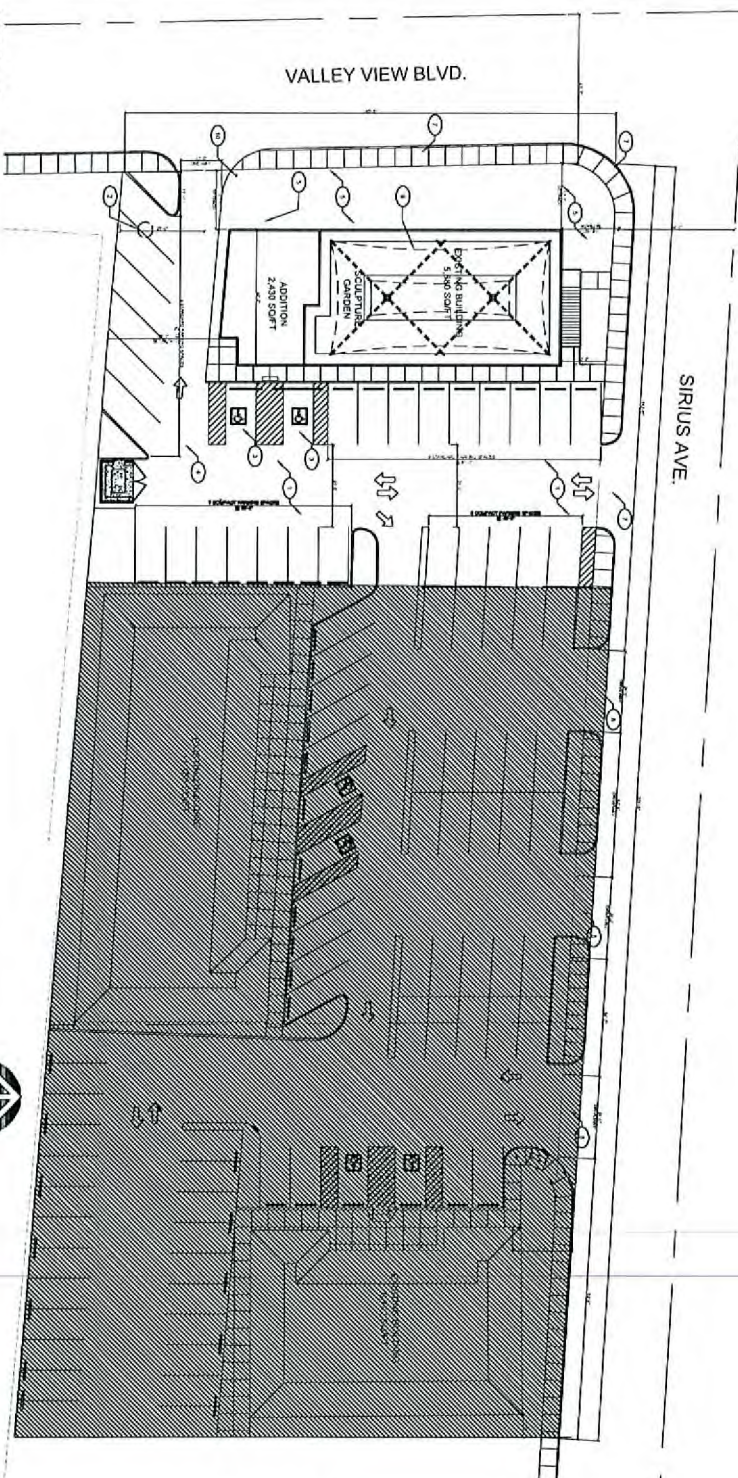
Subscribed and sworn before me

This 16 day of February, 2007

Notary Public in and for said County and State
County of Clark
State of Nevada



RECEIVED

MAY 15 2007



KEYNOTE

○	ASPHALT PAVING - SEE CIVIL ENGINE
○	COUNTY-TYPED IRRIGATION GARDEN
○	HANDICAP PARKING
○	HANDICAP ACCESSIBLE @ CLARK
○	LANDSCAPE - SEE LANDSCAPE PLAN
○	STANDARD HANDICAP SPACE TYPE
○	CONCRETE REPAIRS
○	CASTING DRIVEWAY
○	BRADING SERVICE
○	ONE BAY TYPING ROOM

PROPERTY INFORMATION

LOT SIZE:	136 ACRES (94,668 SQ. FT.)	
PERCENTAGE OF LOT COVERED BY BUILDING FOOTPRINT:		
BUILDING 1	3,800	7%
TOTAL SQ. FT.	3,800 SQ. FT.	
TOTAL FOOTPRINT PERCENTAGE:	3,800 SQ. FT. / 94,668 SQ. FT. = 4.01%	

PARKING INFORMATION

BASED ON CITY OF LAS VEGAS ZONING CODE TITLE 18, THE MINIMUM REQUIRED PARKING FOR THIS PROJECT IS 20 SPACES PER 1,000 SQ. FT. OF G.F.A. UP TO 2,000 SQ. FT. FOR EACH BUILDING.	
REQUIRED PARKING:	
BUILDING ONE (1,170 SQ. FT.) MEDICAL CLINIC ONE	23 SPACES
PARKING SPACES FOR EACH ADDITIONAL 200 @ LEVEL 1	11 SPACES
LEVEL ONE (3,800 SQ. FT.) - 2000 SQ. FT. - 1,800 SQ. FT.	18 SPACES
LEVEL TWO (1,000 SQ. FT.) - 1,000 SQ. FT.	5 SPACES
TOTAL	46 SPACES
TOTAL PARKING PROVIDED	46 SPACES

PARKING INFORMATION

REQUIRED PARKING:	
STANDARD HANDICAPPED SPACE - 1 SPACES	
VAN ACCESSIBLE SPACES - 1 SPACES	
TOTAL REQUIRED	+2 SPACES
TOTAL HANDICAP PROVIDED	+2 SPACES
TOTAL PARKING PROVIDED	48 SPACES



LEGEND

- ↑ PAINTED TRAFFIC ARROWS, COLOR TO BE TRAFFIC WHITE
- PROPERTY LINE
- ▨ PAINTED STRIPS, 3" WIDE @ 3" O.C. COLOR TO BE TRAFFIC WHITE
- ▨ MAP

PROJECT: WORLD WELLNESS
3100 S. VALLEY VIEW BLVD.
LAS VEGAS, NEVADA 89102

AS1.01

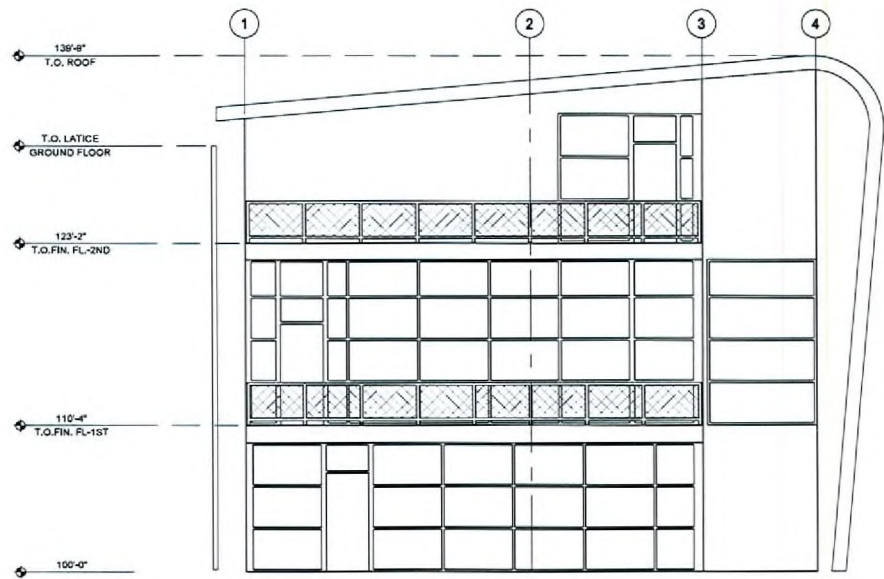
RECEIVED
SEP 25 2007

MGA Melvin Green Architect, Ltd.
3833 W. Spring Mountain Rd., Suite 202 • Las Vegas, NV 89102 • (702) 852-8874

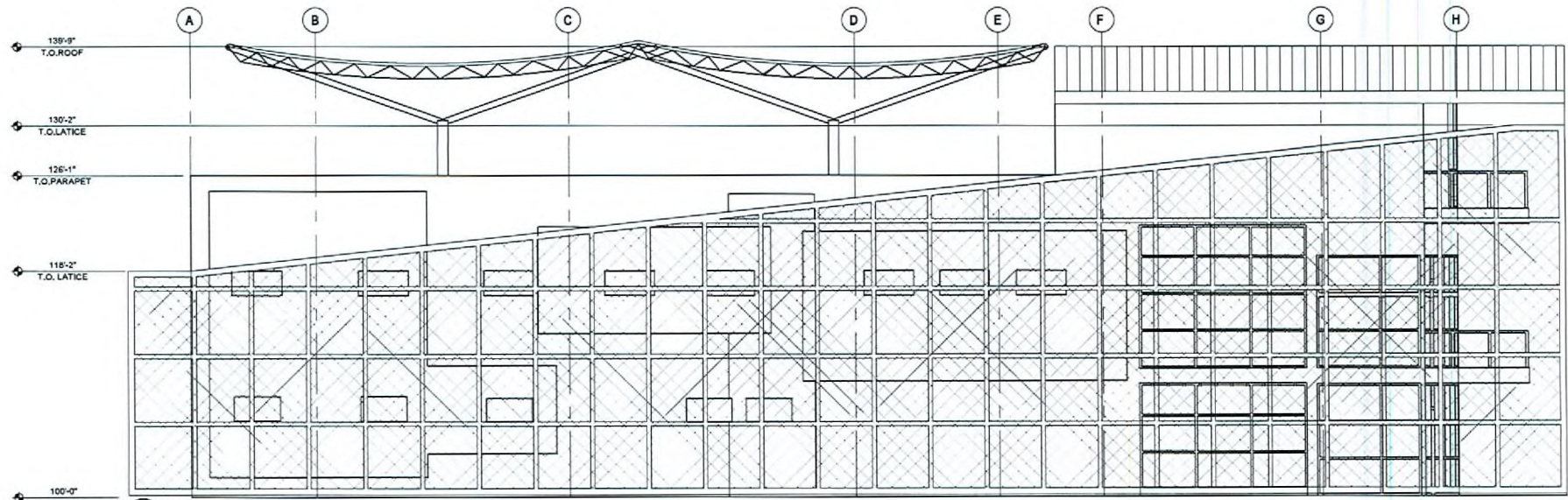
VAR-22867 SDR-21998
REVISED 11/08/07 PC

Professional Engineer Seal: MARY G. GREEN, P.E., No. 2386, State of Nevada, Mechanical Engineering.

Professional Architect Seal: MELVIN GREEN, ARCHITECT, No. 2386, State of Nevada, Architecture.



1 EXTERIOR SOUTH ELEVATION
SCALE: 1/4" = 1'-0"



2 EXTERIOR WEST ELEVATION
SCALE: 1/4" = 1'-0"



© Melvin Green Architect, Ltd. 2004

REVISIONS	BY



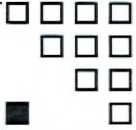
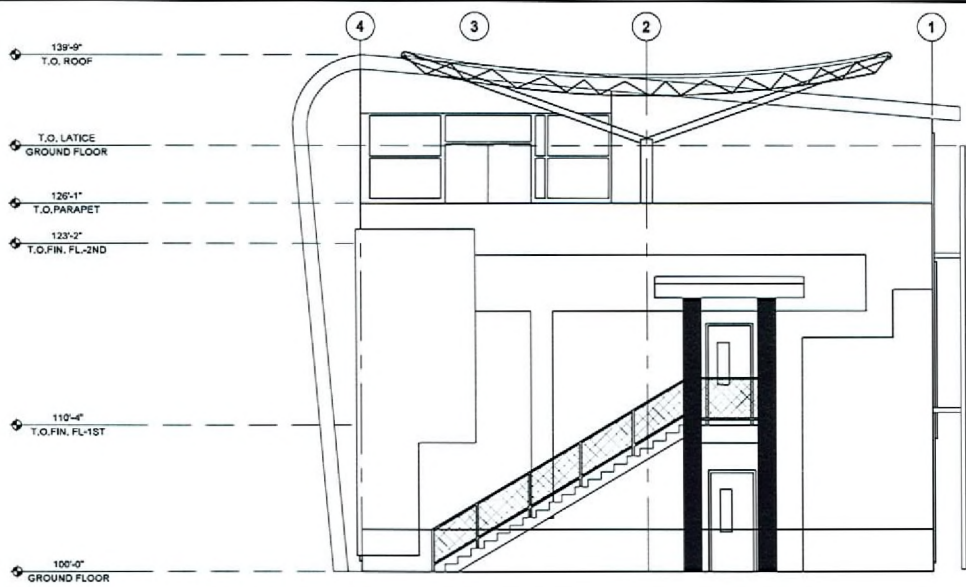
MGA Melvin Green Architect, Ltd.
ARCHITECTURE • INTERIORS • EXTERIORS
2005 E. Spring Mountain Rd., Suite 101 • Las Vegas, NV 89102 • (702) 785-1200
We warrant the work to be in accordance with the contract documents. We do not warrant the work to be in accordance with the contract documents. We do not warrant the work to be in accordance with the contract documents. We do not warrant the work to be in accordance with the contract documents.

PROJECT: WORLD WELLNESS
3100 S. VALLEY VIEW BLVD.
LAS VEGAS, NEVADA 89102
SHEET TITLE: EXTERIOR ELEVATIONS

DATE: 08-28-07
SCALE: AS INDICATED
DRAWN: MORGAN
JOB NO.:

SHEET
A6.01
OF SHEETS

VAR-22867 SDR-21998
REVISED 11/08/07 PC
RECEIVED
SEP 25 2007



© Melvin Green Architect, Ltd. 2004

REVISIONS	BY



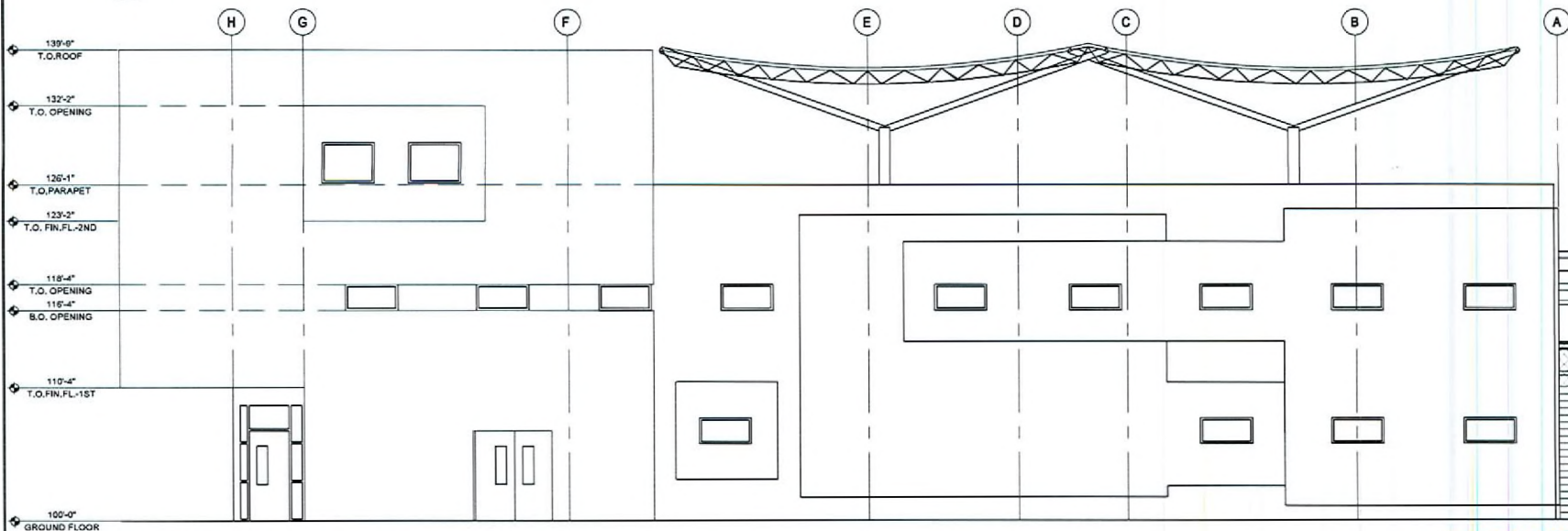
MGA Melvin Green Architect, Ltd.
 ARCHITECTS FOR COMMERCIAL, RESIDENTIAL,
 AND INDUSTRIAL PROJECTS
 2525 W. SOUTH MOUNTAIN BLVD. STE. 100 LAS VEGAS, NV 89102 • (702) 735-8000
 All drawings are prepared by Melvin Green Architect, Ltd. and are the property of Melvin Green Architect, Ltd. No part of this drawing may be reproduced or transmitted in any form or by any means, electronic or mechanical, including photocopying, recording, or by any information storage and retrieval system, without the prior written permission of Melvin Green Architect, Ltd.

PROJECT: "WORLD WELLNESS
 3100 S. VALLEY VIEW BLVD.
 LAS VEGAS, NEVADA 89102
 SHEET TITLE
EXTERIOR ELEVATIONS

DATE: 09-28-07
 SCALE: AS INDICATED
 DRAWN: MORRISBY
 JOB NO:

SHEET
A6.02
 OF SHEETS

3 EXTERIOR NORTH ELEVATION
 SCALE: 1/4" = 1'-0"

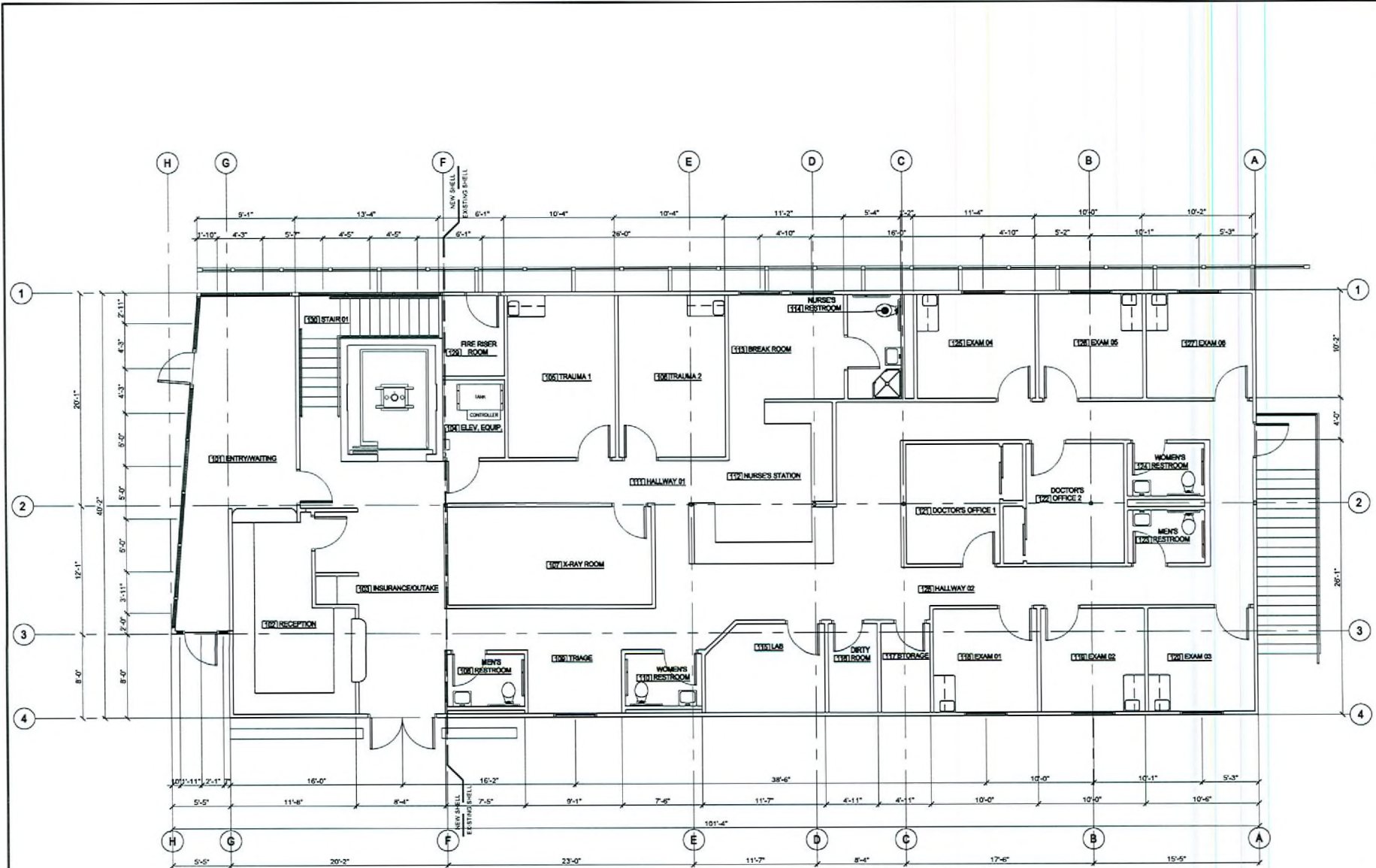


4 EXTERIOR EAST ELEVATION
 SCALE: 1/4" = 1'-0"

RECEIVED

VAR-22867 SDR-21998
 REVISED 11/08/07 PC

SEP 20 2007



FIRST FLOOR PLAN
SCALE: 1/4"=1'-0"



RECEIVED
SEP 25 2007



© Melvin Green Architect, Ltd. 2007

REVISIONS	BY



MGA Melvin Green Architect, Ltd.
ARCHITECTURAL, INTERIOR, LANDSCAPE
3025 N. BURNING WOODS BLVD. SUITE 101 - LAS VEGAS, NV 89168 - 702.735.1234
ALL WORK IS SUBJECT TO APPROVAL BY THE BOARD OF ARCHITECTS AND ENGINEERS OF THE STATE OF NEVADA. THE ARCHITECT ASSUMES NO LIABILITY FOR ANY DAMAGE TO PERSONS OR PROPERTY CAUSED BY THE WORK OR BY ANY OTHER PARTY.

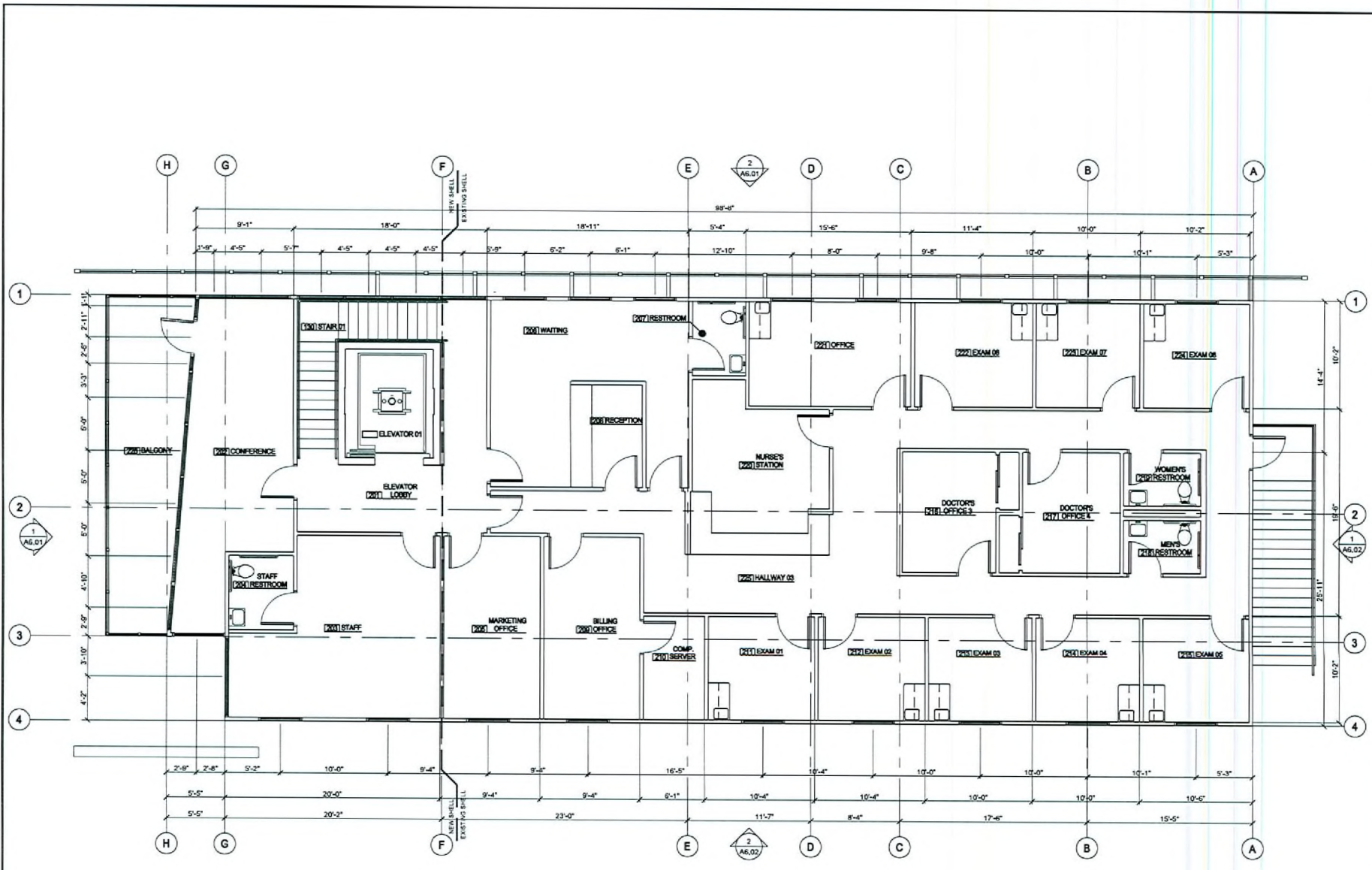
PROJECT: WORLD WELLNESS
3100 S. VALLEY VIEW BLVD.
LAS VEGAS, NEVADA 89102

SHEET TITLE:
FIRST FLOOR PLAN

DATE:	09-28-07
SCALE:	AS INDICATED
DRAWN:	MGM/LAW/TD
JOB NO.:	

SHEET
A1.01
OF SHEETS

VAR-22867 SDR-21998
REVISED 11/08/07 PC

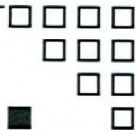


SECOND FLOOR PLAN
SCALE: 1/4"=1'-0"



RECEIVED

SEP 8 5 2007



© Melvin Green Architect, Ltd. 2004

REVISIONS	BY

MELVIN D. GREEN
REGISTERED ARCHITECT
STATE OF NEVADA
No. 2267
JUNE 25, 2007

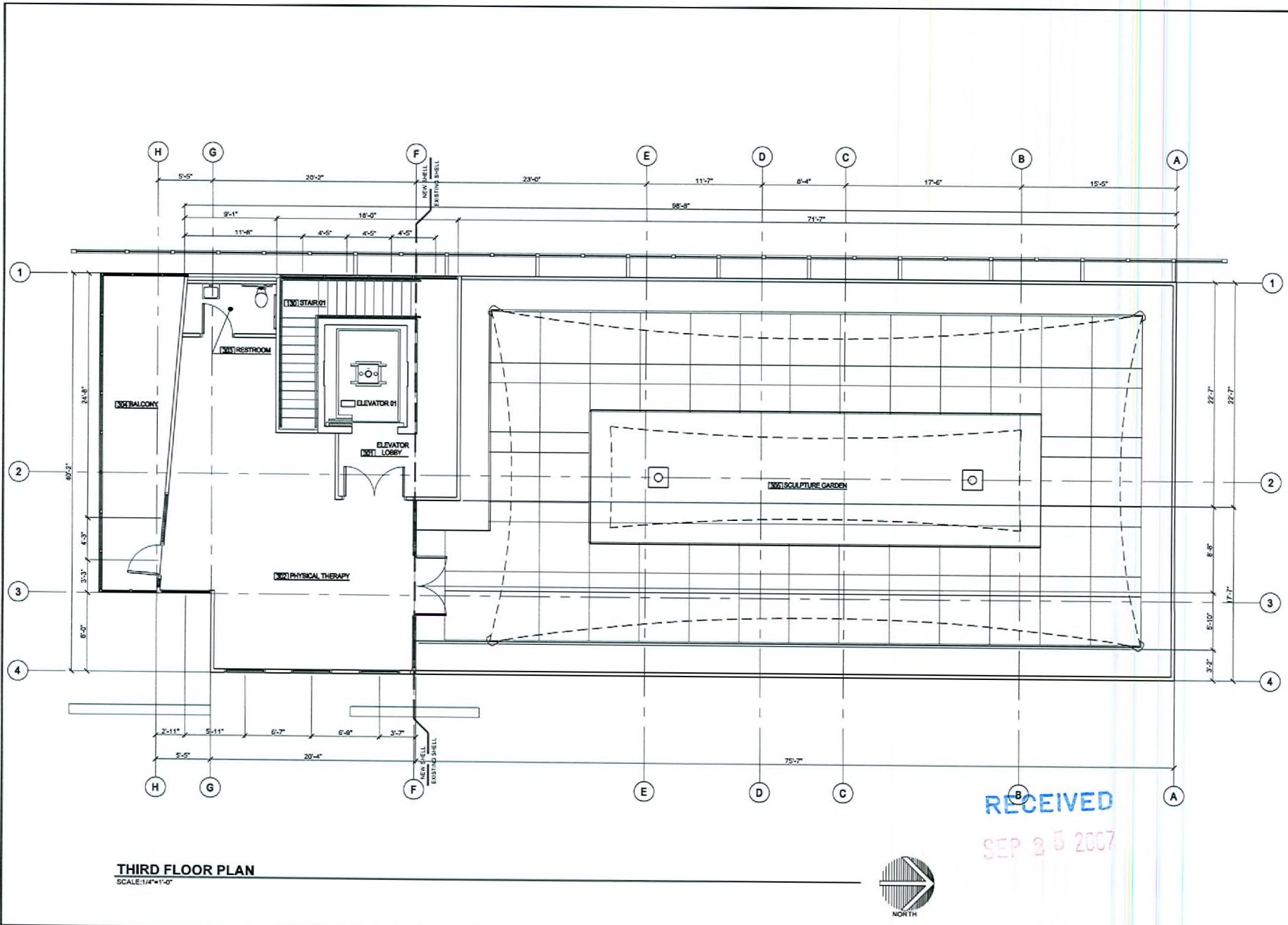
MGA Melvin Green Architect, Ltd.
ARCHITECTS • INTERIORS • LANDSCAPE ARCHITECTS
2000 W. BURNS BOULEVARD, SUITE 107 • LAS VEGAS, NEVADA 89102
TEL: 702.735.2800 FAX: 702.735.2801
WWW.MELVINGREENARCHITECT.COM
All work is subject to the terms and conditions of the contract documents. The architect shall not be responsible for the construction of the project or for the performance of the contractor. The architect shall not be responsible for the construction of the project or for the performance of the contractor.

PROJECT: WORLD WELLNESS
3100 S. VALLEY VIEW BLVD.
LAS VEGAS, NEVADA 89102

DATE: 08-08-07
SCALE: AS INDICATED
DRAWN: MORGANWYTO
JOB NO:

SHEET
A1.02
OF SHEETS

VAR-22867 SDR-21998
REVISED 11/08/07 PC



THIRD FLOOR PLAN
SCALE: 1/4" = 1'-0"



RECEIVED
SEP 3 5 2007



© Melvin Green Architects, LLC 2004

REVISIONS	BY



MGA Melvin Green Architects, Ltd.
ARCHITECTURAL CONSULTANTS, INCORPORATED
2025 N. TEXAS BOULEVARD, SUITE 201, LAS VEGAS, NV 89102 • (702) 734-1000
We warrant our work to be free of errors and omissions. We do not warrant the accuracy of information provided by others. We are not responsible for any delays or costs incurred by others in connection with the use of our drawings. We are not responsible for any construction or other costs incurred by others in connection with the use of our drawings.

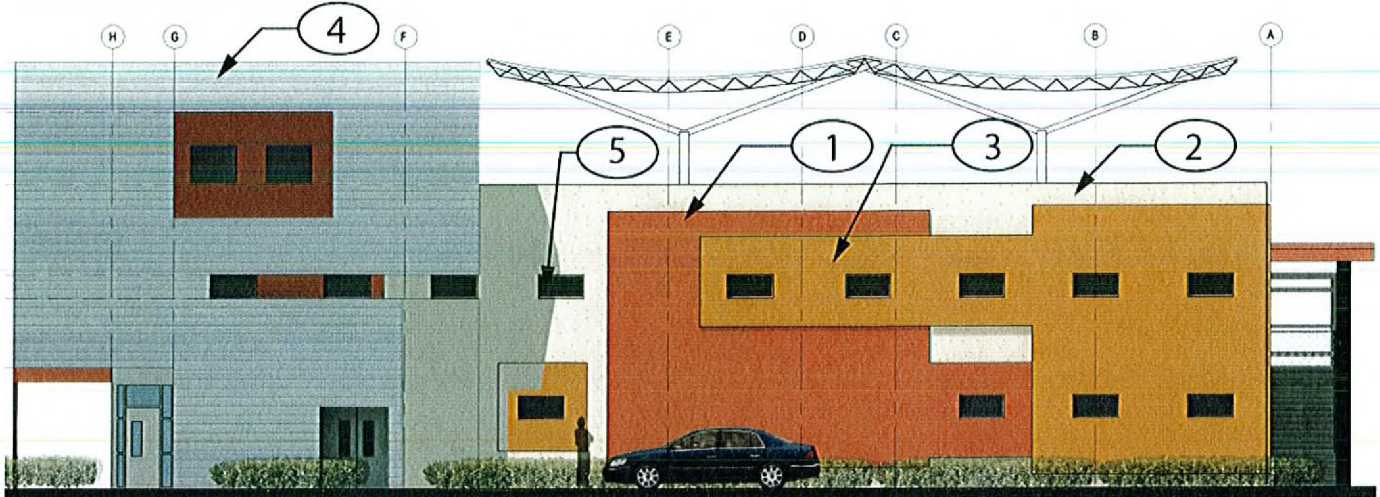
PROJECT: WORLD WELLNESS
3100 S. VALLEY VIEW BLVD.
LAS VEGAS, NEVADA 89102
SHEET TITLE:
THIRD FLOOR PLAN

DATE: 09-29-07
SCALE: AS INDICATED
DRAWN: MGR/SJL/HTD
JOB NO:

SHEET
A1.03
OF SHEETS

VAR-22867 SDR-21998
REVISED 11/08/07 PC

World Wellness
 Zoning Submittal
 Color and Materials Sheet



Keystone	Material	Finish	Color	Manufacturer	Sample
1	PAINT	CL1456A	IRON MOUNTAIN	FRAZZE PAINT	
2	PAINT	CLC1255W	SYNTAX	FRAZZE PAINT	
3	PAINT	CL1625A	WILEY	FRAZZE PAINT	
4	GKD Metal Fabrics	Metal	SLATE GRAY	GKD	
5	Okasolar Glass	Clear	Clear	Okasolar	

RECEIVED

VAR-22867 SDR-21998
 REVISED 11/08/07 PC

SEP 25 2007