

DENNIS E. RUSK ARCHITECT, LLC

PROPOSED EXISTING PATIO ENCLOSURE

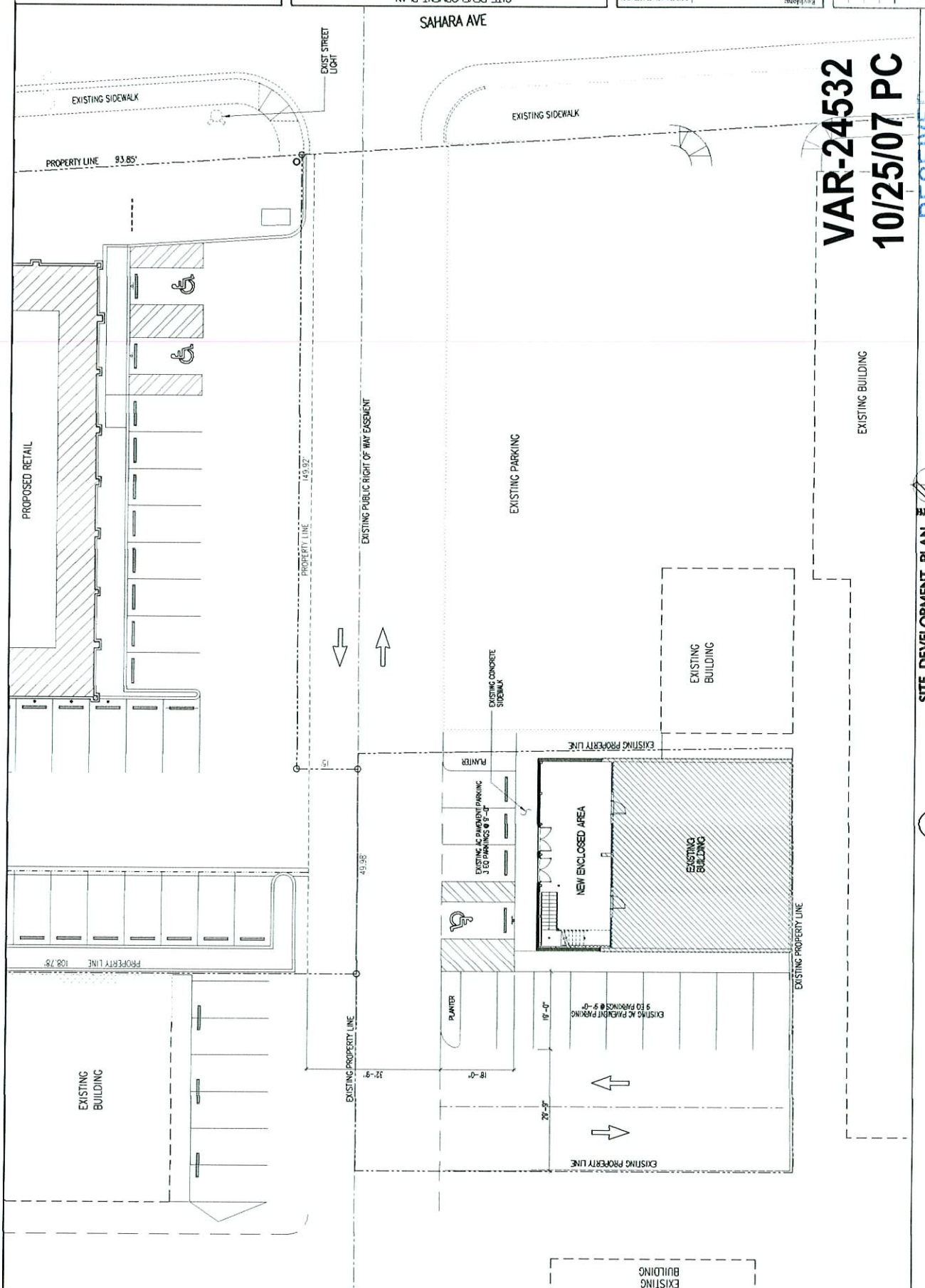
SITE DEVELOPMENT PLAN

90 E SAHARA AVENUE
LAS VEGAS, NEVADA

SP10

DATE: 10/25/07
PROJECT NO.:
DRAWN BY: ADVANCED
CHECKED BY:
SCALE: AS SHOWN

REVISIONS:



VAR-24532
10/25/07 PC

RECEIVED

SEP 11 2007

SITE DEVELOPMENT PLAN
SCALE: 1" = 10'-0"

1