



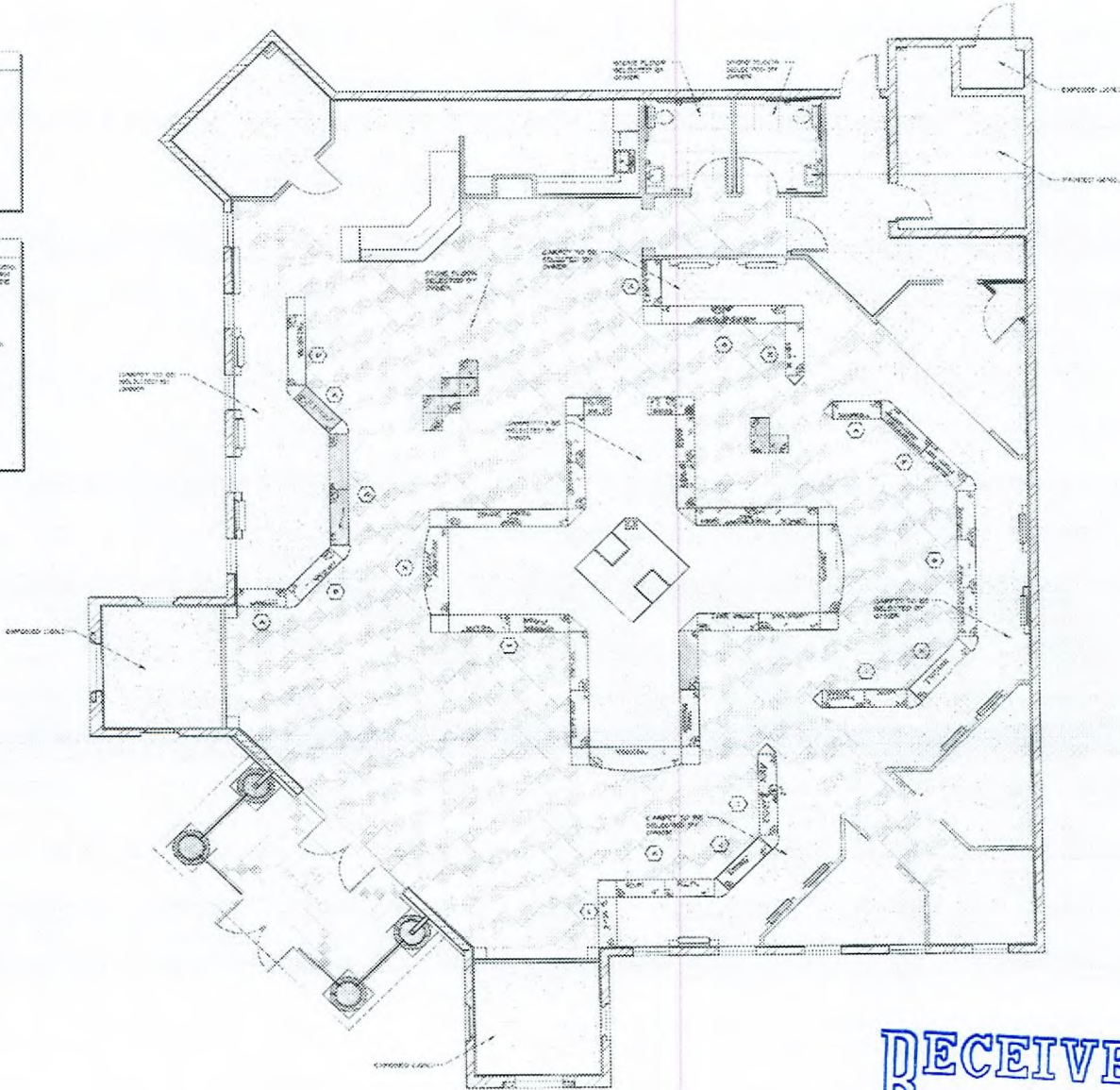
**WALL LEGEND**

	0' 6" G.I. WALL WITH RAISED SPONGE GROUT BACKSTOP PANEL SEE DET. 101, 102, 103
	0' 6" G.I. WALL WITH 2" SOLID PARABOND PANEL SEE DET. 101, 102, 103
	0' 6" G.I. WALL WITH 0' 6" G.I. WALL & 2" SOLID SPONGE GROUT BACKSTOP PANEL SEE DET. 101, 102, 103
	0' 6" G.I. WALL WITH 0' 6" G.I. WALL & 2" SOLID SPONGE GROUT BACKSTOP PANEL SEE DET. 101, 102, 103
	0' 6" G.I. WALL WITH 0' 6" I-Beam FRONT, 0' 6" G.I. WALL & 2" SOLID SPONGE GROUT BACKSTOP PANEL SEE DET. 101, 102, 103
	0' 6" G.I. WALL WITH 0' 6" I-Beam FRONT, 0' 6" G.I. WALL & 2" SOLID SPONGE GROUT BACKSTOP PANEL SEE DET. 101, 102, 103
	0' 6" G.I. WALL WITH 0' 6" I-Beam FRONT, 0' 6" G.I. WALL & 2" SOLID SPONGE GROUT BACKSTOP PANEL SEE DET. 101, 102, 103
	0' 6" G.I. WALL WITH 0' 6" I-Beam FRONT, 0' 6" G.I. WALL & 2" SOLID SPONGE GROUT BACKSTOP PANEL SEE DET. 101, 102, 103
	0' 6" G.I. WALL WITH 0' 6" I-Beam FRONT, 0' 6" G.I. WALL & 2" SOLID SPONGE GROUT BACKSTOP PANEL SEE DET. 101, 102, 103
	0' 6" G.I. WALL WITH 0' 6" I-Beam FRONT, 0' 6" G.I. WALL & 2" SOLID SPONGE GROUT BACKSTOP PANEL SEE DET. 101, 102, 103

**ELECTRICAL LEGEND**

	1. DIM. 2" DIA. 2" DEPT. TYPE 1 (1" DIA. 2" DEPT.)
	2. DIM. 2" DIA. 2" DEPT. TYPE 2 (1" DIA. 2" DEPT.)
	3. DIM. 2" DIA. 2" DEPT. TYPE 3 (1" DIA. 2" DEPT.)
	4. DIM. 2" DIA. 2" DEPT. TYPE 4 (1" DIA. 2" DEPT.)
	5. DIM. 2" DIA. 2" DEPT. TYPE 5 (1" DIA. 2" DEPT.)
	6. DIM. 2" DIA. 2" DEPT. TYPE 6 (1" DIA. 2" DEPT.)

- GENERAL NOTES**
1. ALL WORK SHALL BE DONE IN ACCORDANCE WITH ALL THE REQUIREMENTS OF THE 2000 INTERNATIONAL ELECTRIC CODE AND THE 2000 INTERNATIONAL MECHANICAL CODE AND ALL OTHER APPLICABLE LOCAL ORDINANCES.
  2. ALL WORK SHALL BE DONE IN ACCORDANCE WITH THE REQUIREMENTS OF THE 2000 INTERNATIONAL ELECTRIC CODE AND THE 2000 INTERNATIONAL MECHANICAL CODE AND ALL OTHER APPLICABLE LOCAL ORDINANCES.
  3. SEE THE MECHANICAL DRAWINGS FOR ALL MECHANICAL WORK.
  4. SEE THE ELECTRICAL DRAWINGS FOR ALL ELECTRICAL WORK.
  5. SEE THE PLUMBING DRAWINGS FOR ALL PLUMBING WORK.
  6. SEE THE HVAC DRAWINGS FOR ALL HVAC WORK.
  7. SEE THE FINISH DRAWINGS FOR ALL FINISH WORK.
  8. SEE THE STRUCTURAL DRAWINGS FOR ALL STRUCTURAL WORK.
  9. SEE THE GEOTECHNICAL DRAWINGS FOR ALL GEOTECHNICAL WORK.
  10. SEE THE CIVIL DRAWINGS FOR ALL CIVIL WORK.



CASE WORK / FINISHED FLOOR PLAN  
 SCALE: 1/8" = 1'-0"



NO.	REVISION
1	ISSUED FOR PERMIT
2	ISSUED FOR CONSTRUCTION
3	ISSUED FOR AS-BUILT
4	ISSUED FOR RECORD
5	ISSUED FOR ARCHIVE

**M.J. CHRISTENSEN JEWELRY STORE**  
 TENANT IMPROVEMENT  
 BOCA PARK MARKETPLACE, PAD "F"  
 NEC CHARLESTON & RAMPART

**RECEIVED**  
 SEP 11 2007  
 SUP-24525  
 10/25/07 PC

Drawn/Checked by	R.N.J.R.
Date	JULY 6, 2002
Project No.	102019
Sheet No.	10-1

