

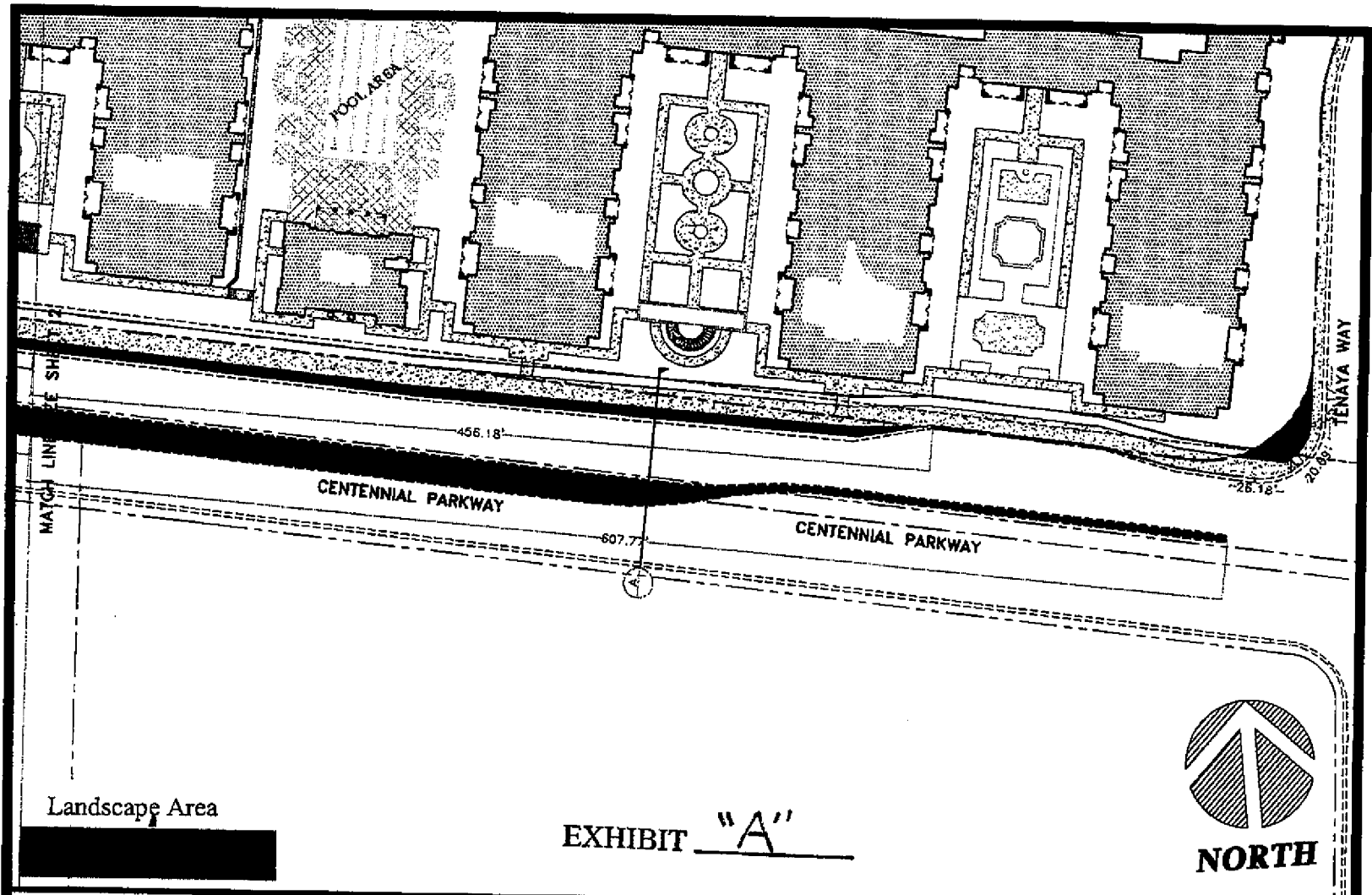
AGENDA MEMO

CITY COUNCIL MEETING DATE: NOVEMBER 21, 2007

DEPARTMENT: PUBLIC WORKS

ITEM DESCRIPTION: APPROVAL OF AN ENCROACHMENT REQUEST FROM CLV CONSULTANTS, INCORPORATED, ON BEHALF OF SHIRON DEVELOPMENT, LLC, OWNER (NORTHEAST CORNER OF CENTENNIAL PARKWAY AND JOHN HERBERT BOULEVARD) - WARD 6 (ROSS)

1. Copy of Encroachment Exhibit "A" Centennial Parkway at Tenaya Way)
2. Copy of Encroachment Exhibit "B" Centennial Parkway)
3. Copy of Encroachment Exhibit "C" (Centennial Parkway)
4. Copy of Encroachment Exhibit "D" (Centennial Parkway at John Herbert Boulevard)
5. Copy of Encroachment Exhibit "E" (John Herbert Boulevard)
6. Copy of Encroachment Exhibit "F" (vicinity map)
7. Copy of Encroachment Exhibit "G" (John Herbert Boulevard typical section)
8. Copy of Encroachment Exhibit "H" (Centennial Parkway typical section)



Landscape Area

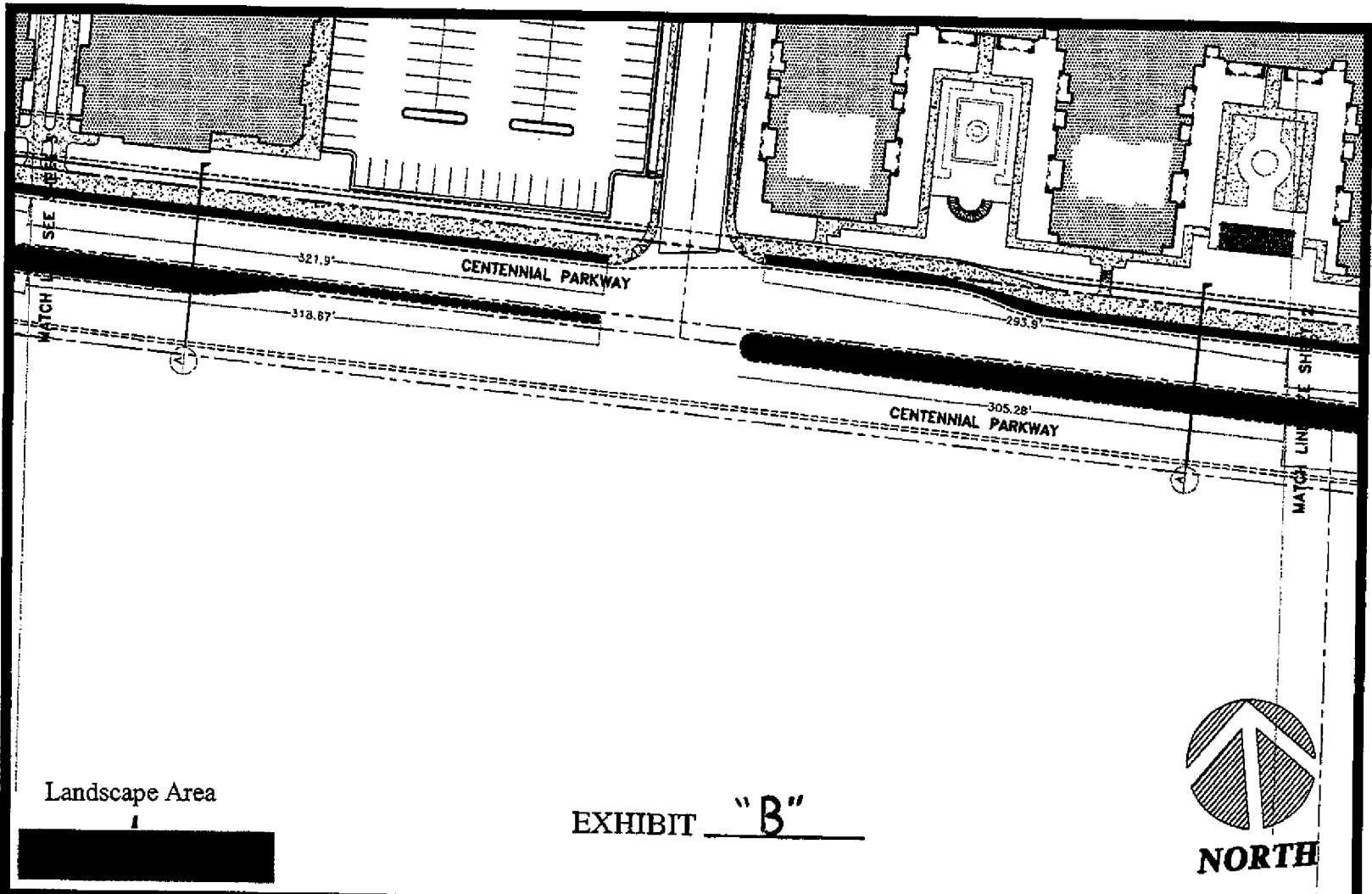
EXHIBIT "A"



NOT TO SCALE

PAXTON WALK CENTENNIAL LOOP ROAD
LANDSCAPE ENCROACHMENT

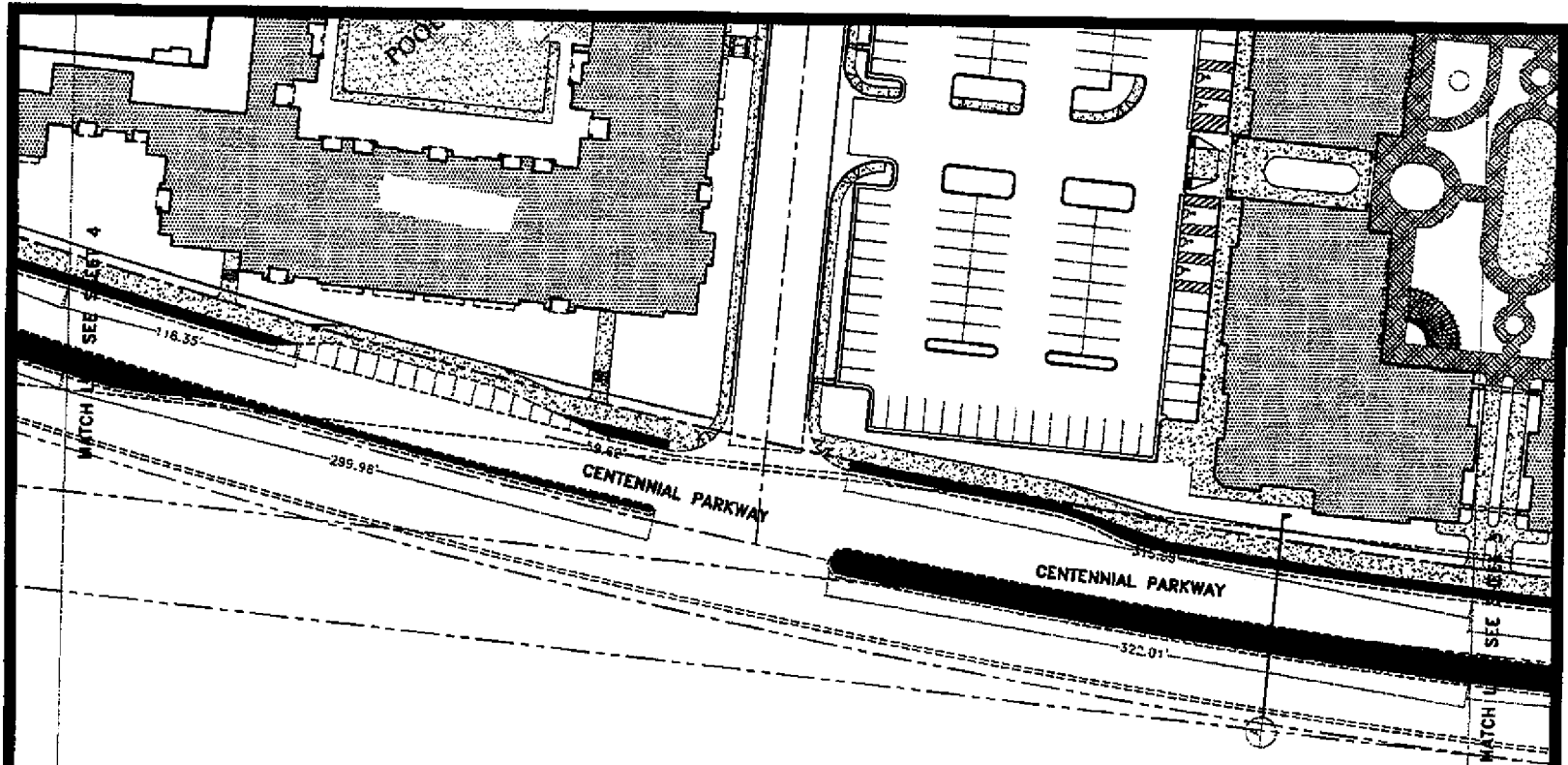
SHEET ONE



NOT TO SCALE

PAXTON WALK CENTENNIAL LOOP ROAD
LANDSCAPE ENCROACHMENT

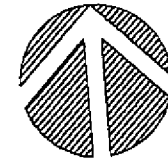
SHEET TWO



Landscape Area



EXHIBIT "C"



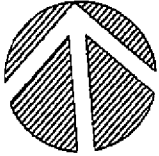
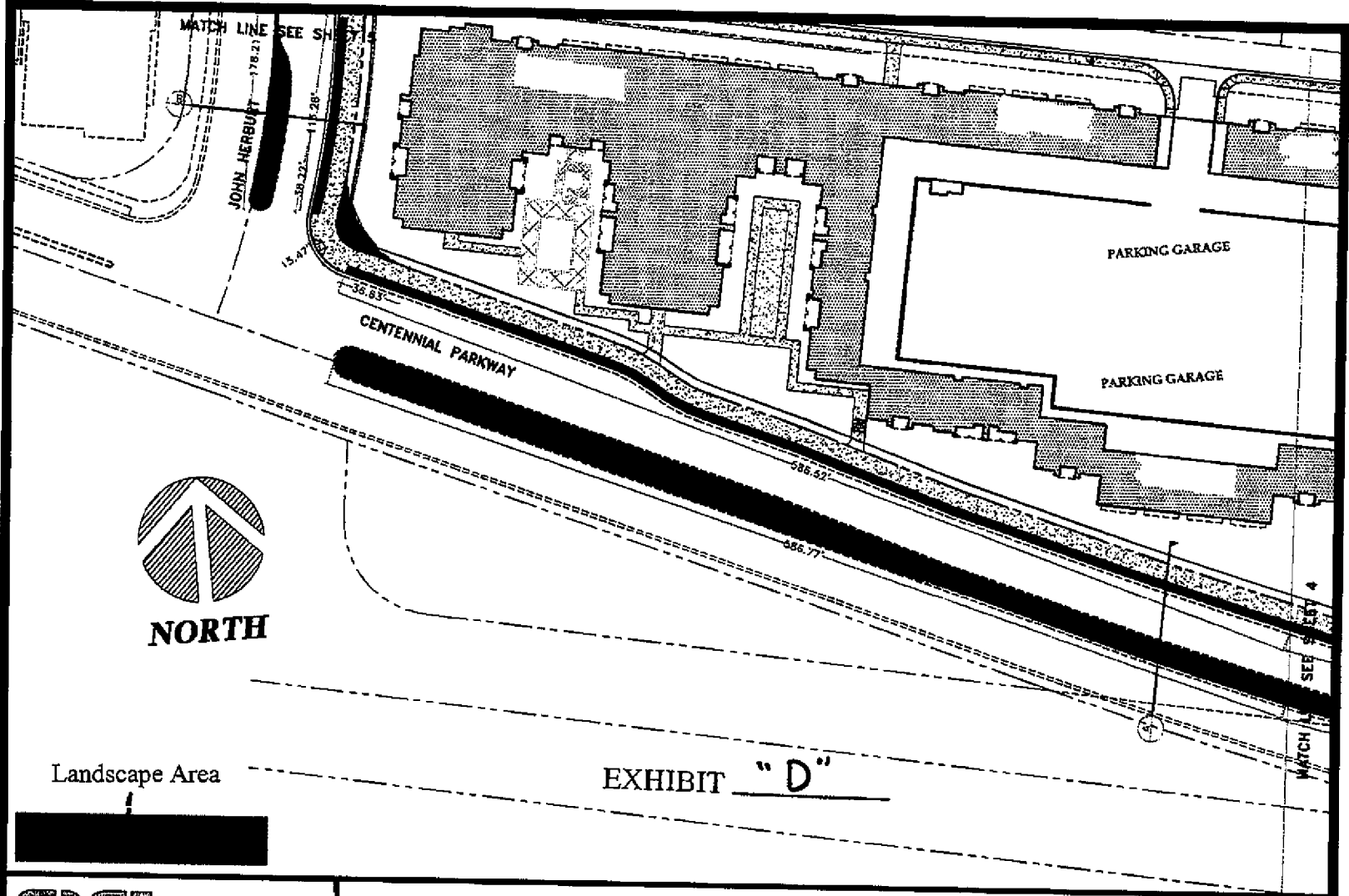
NORTH



PAXTON WALK CENTENNIAL LOOP ROAD
LANDSCAPE ENCROACHMENT

NOT TO SCALE

SHEET THREE



NORTH

Landscape Area



EXHIBIT "D"



NOT TO SCALE

PAXTON WALK CENTENNIAL LOOP ROAD
LANDSCAPE ENCROACHMENT

SHEET FOUR

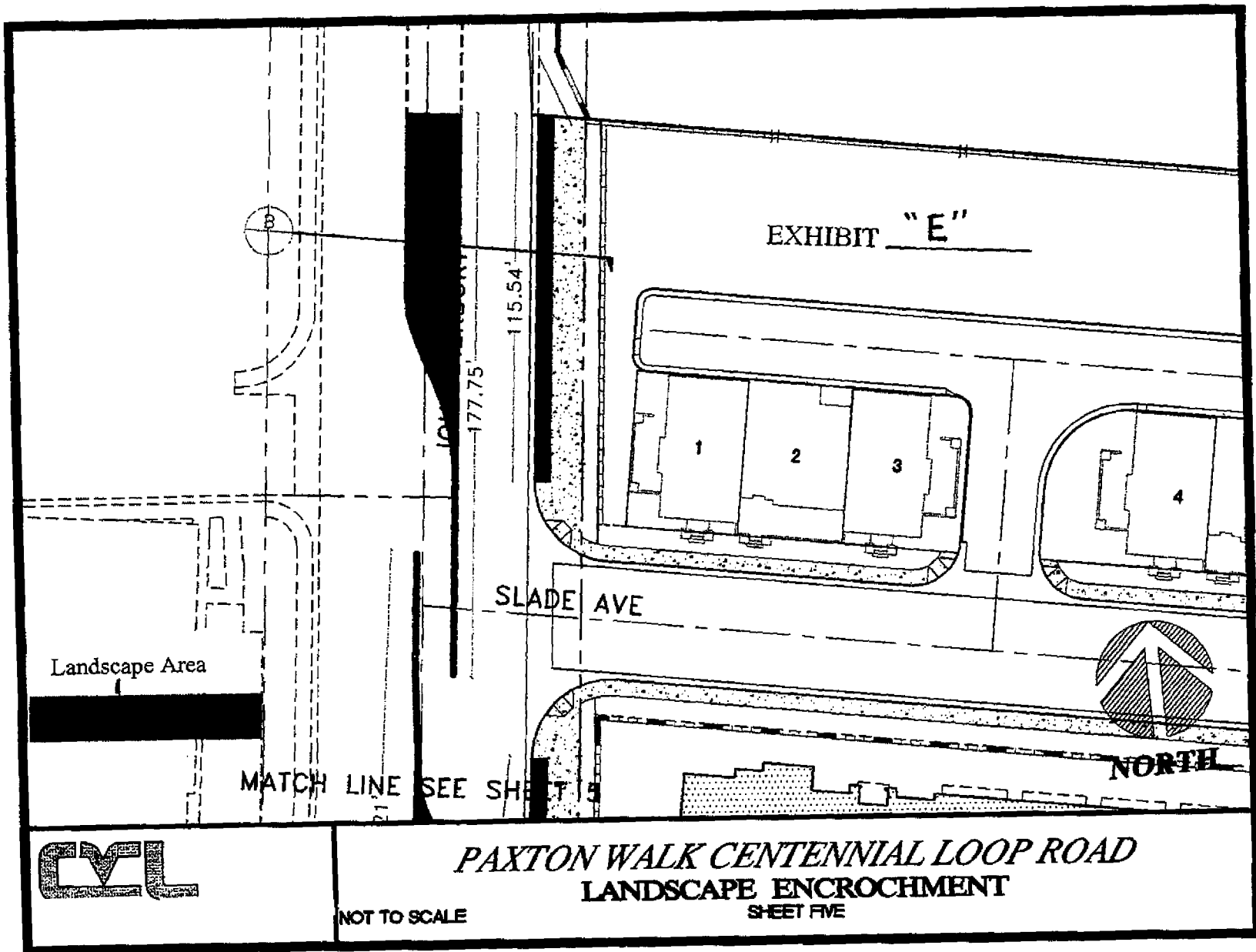
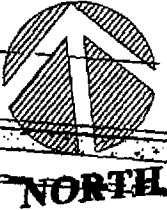


EXHIBIT "E"

SLADE AVE

Landscape Area

MATCH LINE SEE SHEET 5

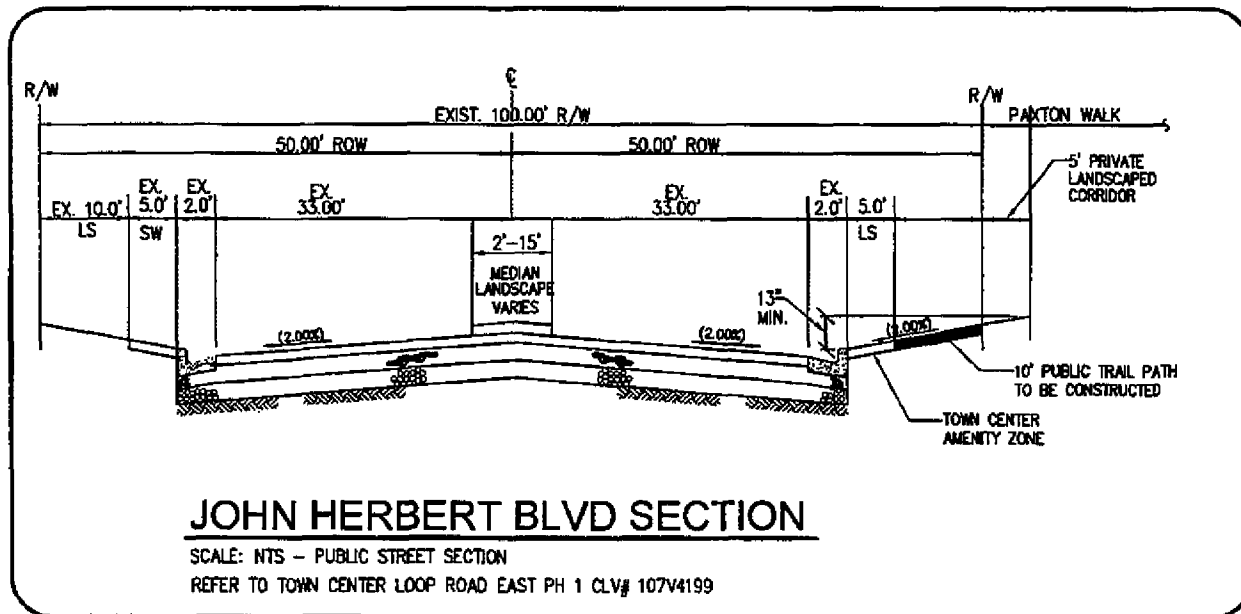


PAXTON WALK CENTENNIAL LOOP ROAD
LANDSCAPE ENCROCHMENT

NOT TO SCALE

SHEET FIVE





Landscape Area



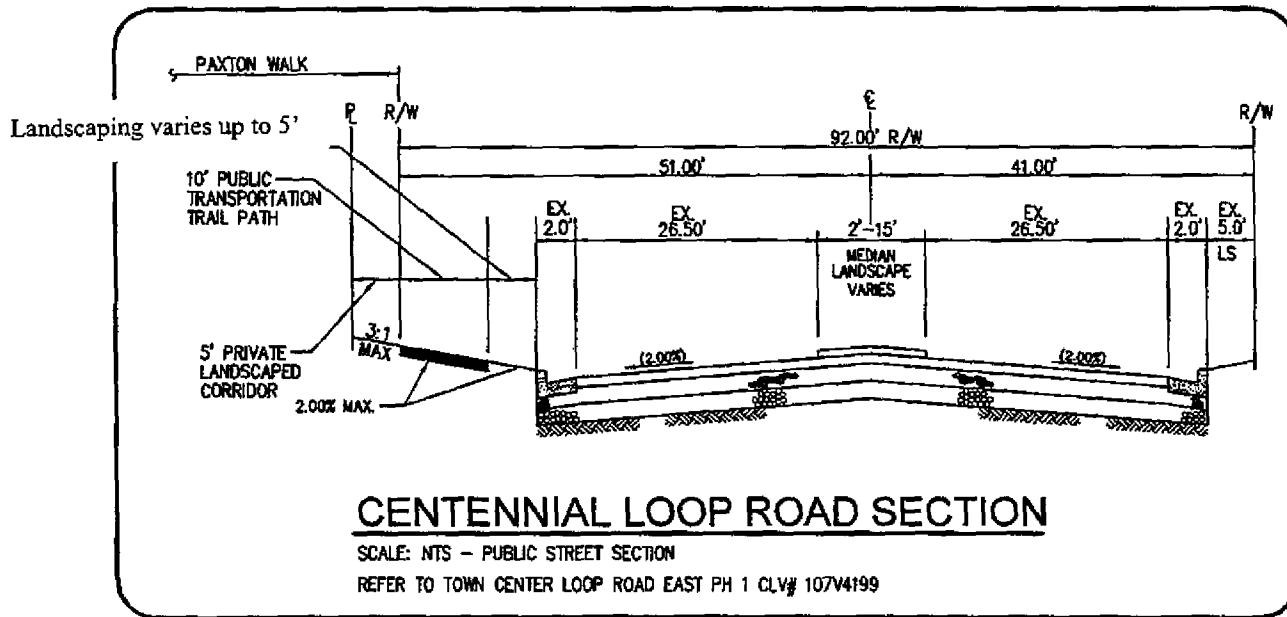
EXHIBIT "G"



**PAXTON WALK CENTENNIAL LOOP ROAD
 LANDSCAPE ENCROCHMENT**

NOT TO SCALE

DETAIL "B" SHEET SEVEN



Landscape Area



EXHIBIT "H"



NOT TO SCALE

**PAXTON WALK CENTENNIAL LOOP ROAD
LANDSCAPE ENCROACHMENT**

DETAIL 'A' SHEET EIGHT