

PARKING STANDARDS
 SUITE 101-2500 S.F. - OFFICES - 9 SPACES
 SUITE 103-2000 S.F. - OFFICES - 7 SPACES
 SUITE 105-2000 S.F. - BAR - 5 SPACES
 SUITE 108 2500 S.F. - OFFICES - 9 SPACES

1000 E. SAHARA AVE. SUP-24249

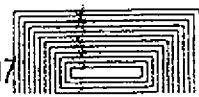
REVISED
 10/11/07 PC

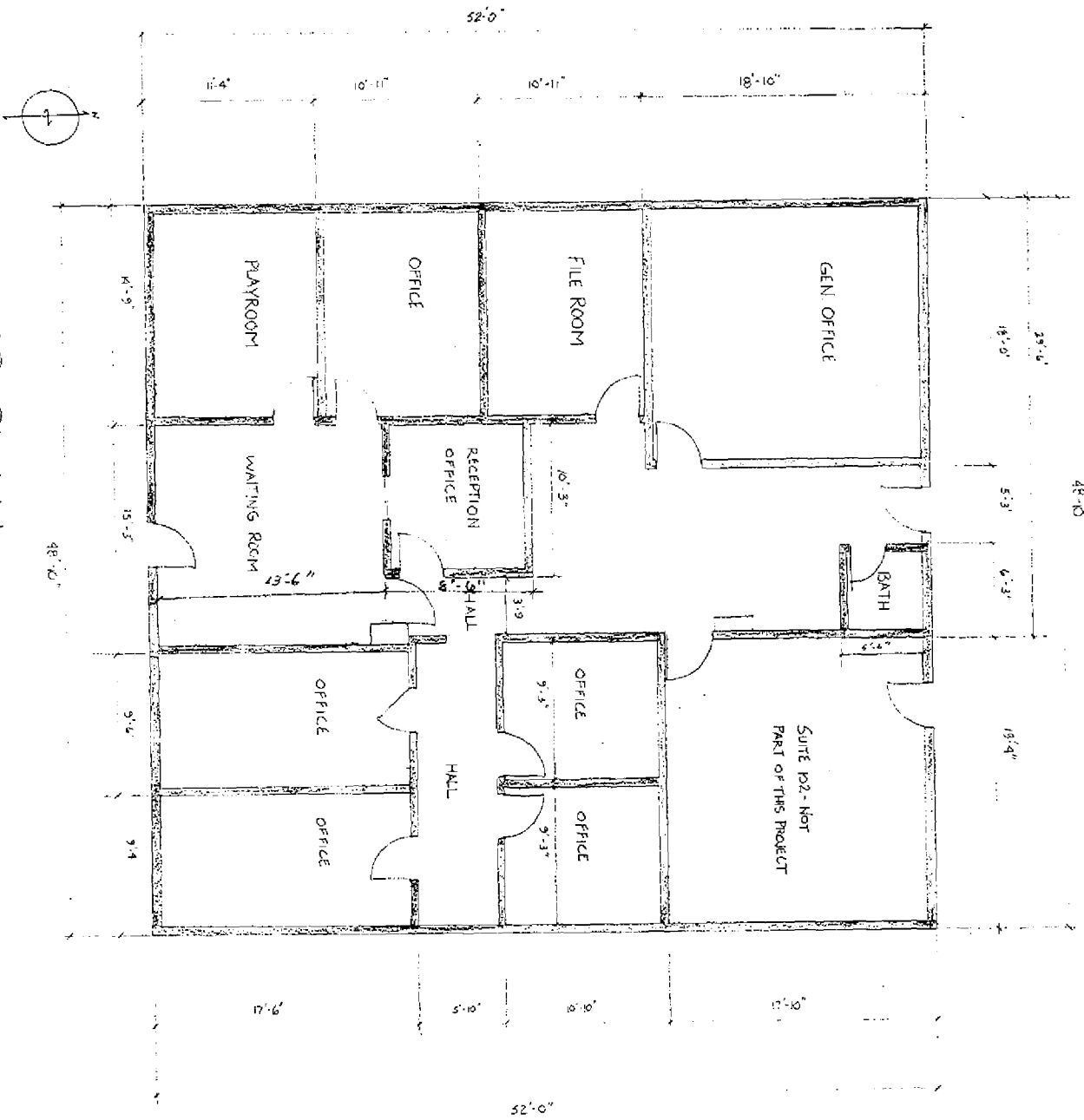
RECEIVED 07
 SEP 29 2007

MAG DAVIS ARCHITECT

1029 JOSEPH KERWIN DR. LAS VEGAS, NV. 89145 702 806-6846
 702 493-3786

NEAREST MASS TRANSIT
 ON MARYLAND PARKWAY
 .24 MILES AT SAHARA
 LINE 109 OR 204.





FLOOR PLAN

SUITE 101

SCALE 1/8"=1'-0"

SUP-24249
10/11/07 PC

RECEIVED
SEP 18 2007

PROJECT FOR SUNRISE CHILDREN'S FOUNDATION WIC CLINIC
EXISTING OFFICES AT 1000 E. SAHARA AVE. SUITE 101

PROJECT MANAGER PAT NATION 702-731-8373
DRAWN BY MARIA VIETMEIER

DATE 9-17-07