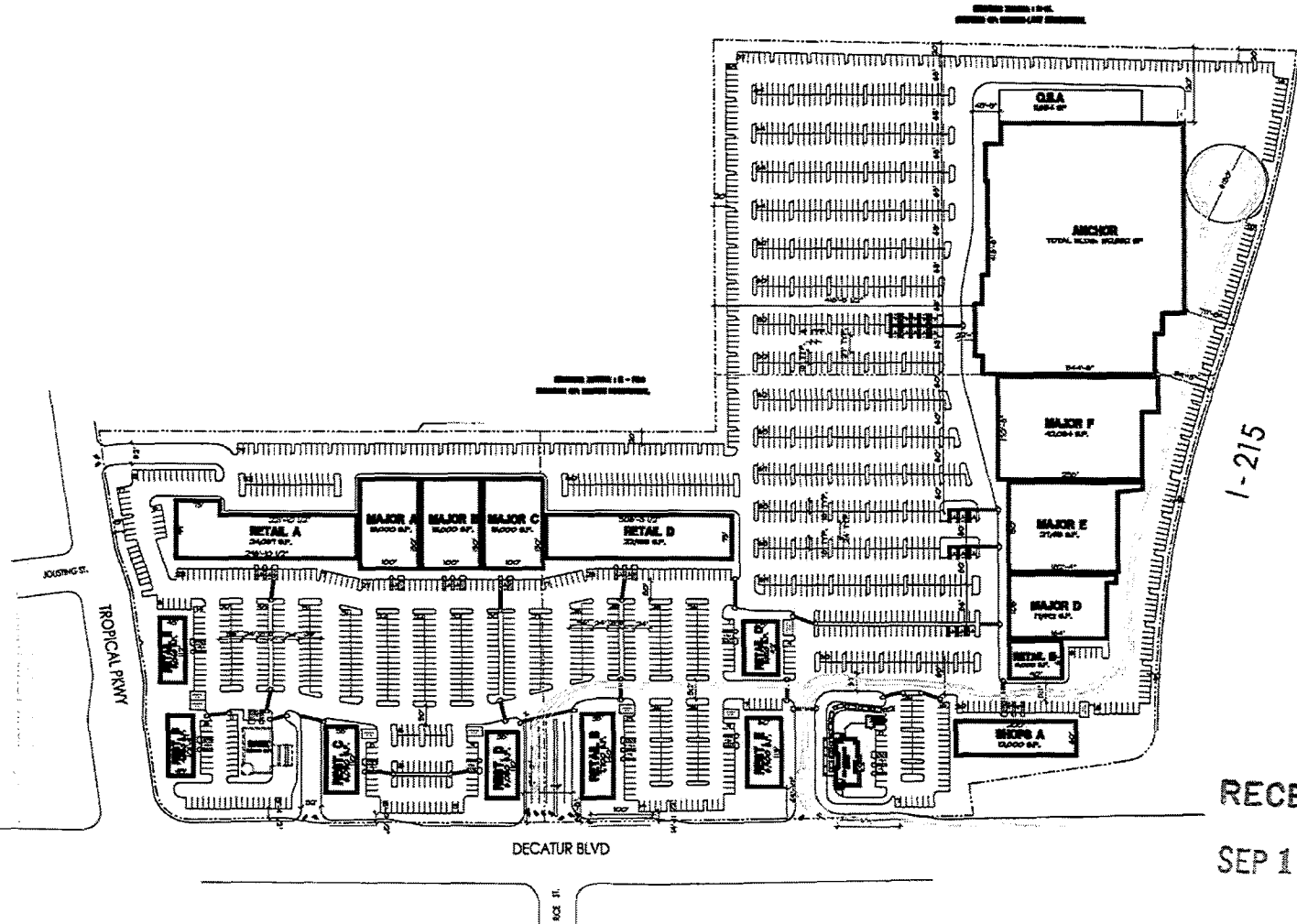
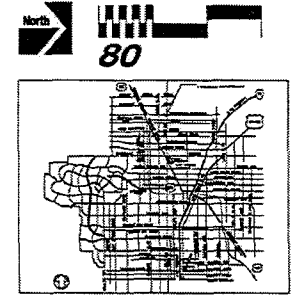


9/19/07 Item # 126-127



Summary

Land	36.43 AC	1,586,848 SF
Building		379,028 SF
+O.S.A		11,634 SF
Total Building		390,662 SF
Land-to-Bldg Ratio		3.18/1
Coverage		23.9 %
**Parking Required		1,563 stalls
Parking Provided		2,249 stalls
Parking Ratio		5.76 / 1,000
**Parking Required		
Shopping Center		
1/250 @ 390,662 sf		1,563 stalls



Vicinity Map
Not to Scale

ALL BUILDING, IMPROVEMENTS, TREE LOCATIONS AND THE USER AS SHOWN ON THIS PLAN ARE PRELIMINARY AND SUBJECT TO INSPECTION AT THE OWNER'S DISCRETION WITHOUT NOTICE.

THIS PRELIMINARY SITE PLAN IS BASED ON INFORMATION FURNISHED TO NADEL ARCHITECTS LLP AND IS SUBJECT TO VERIFICATION BY LOCAL, REGIONAL AND FEDERAL AGENCIES ETC. THE DRAWING IS NOT NEARLY A REPRESENTATION AS TO EXISTENCY, TYPE, SIZE, LOCATION, TIME OF OCCUPANCY OF ANY BUILDING WITHIN THIS CENTER.

RECEIVED
SEP 18 2007

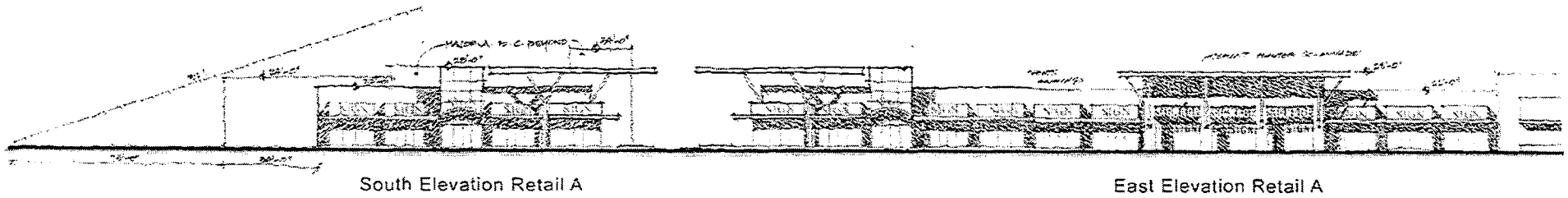
PRELIMINARY SITE PLAN - Scheme G
NWC TROPICAL PKWY & DECATUR BLVD.
LAS VEGAS, NV

DATE: SEPTEMBER 11, 2007
SCALE: 3/8" = 1'-0"

NADEL ARCHITECTS BY APPOINTMENT, LLP
780 S. DEAN MARTIN DR., SUITE 300
LAS VEGAS, NV 89109
TEL: 702.734.2000 FAX: 702.734.2070
WWW.NADELARC.COM

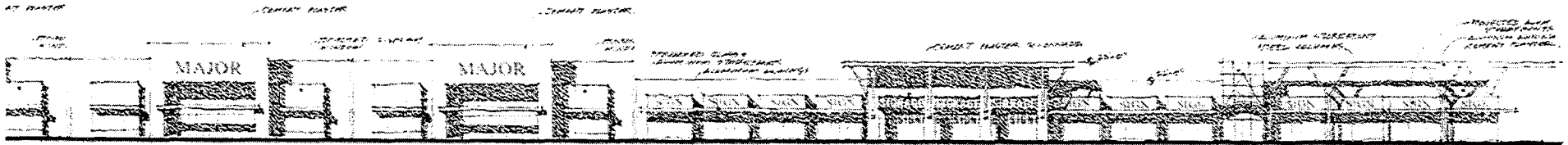


ZON-22583
SDR-22582 09-19-07 CC



South Elevation Retail A

East Elevation Retail A



East Elevation Major A-B-C

East Elevation Retail D



PRELIMINARY ELEVATIONS

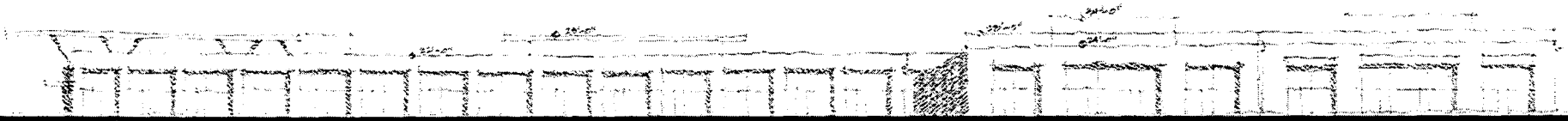
**NWC TROPICAL PKWY & DECATUR BLVD.
LAS VEGAS, NV**

DATE: SEPTEMBER 12, 2007
NADEL JOB#: 0769.00
NADEL ARCHITECTS NEVADA, LLP
780 S. DEAN MARTIN DR., SUITE 800
LAS VEGAS, NV 89108
702.264.2000 702.264.7770
WWW.NADEL.ARCH.COM



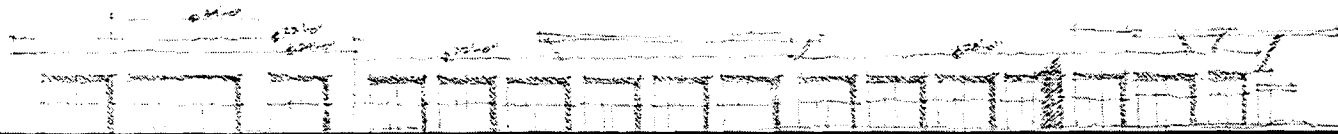
ZON-22583 SDR-22582 09-19-07 CC

SEP 13 2007



West Elevation Retail D

West Elevation Major B-C



West Elevation Major A

West Elevation Retail A

PRELIMINARY ELEVATIONS

**NWC TROPICAL PKWY & DECATUR BLVD.
LAS VEGAS, NV**

DATE: SEPTEMBER 17, 2007
RADES: J086: 0749/00

NADEL ARCHITECTS NEVADA, LLP
780 S. DEAN MARTIN DR., SUITE 800
LAS VEGAS, NV 89109
1.702.868.2000 870.268.1770
WWW.NADELARC.COM



**NADEL
RETAIL
RECEIVED**

ZON-22583 SDR-22582 09-19-07 CC

SEP 13 2007