





Humphreys and Partners Architects, L.P.  
5350-ALPHA ROAD, DALLAS, TEXAS 75240-972, 701 9634

**TABULATION**

LOT AREA - 524 ACRES  
 SETBACK - 20'-0"  
 HEIGHT - 30'-0"  
 DENSITY - 20 U/A  
 REAR - 40'-0"  
 UNIT MIX:  
 20% 1 BR/1BA - 100(20%)  
 40% 2 BR/2BA - 120(40%)  
 20% 3 BR/3BA - 74(20%)

UNIT TYPE	AREA*	NO.
A2	258 SF	50
A3	1,124 SF	50
B1	1,153 SF	50
B2	1,234 SF	26
B3	1,671 SF	50
C1	1,520 SF	50
Penthouse 1	4,020 SF	8
Penthouse 2	2,677 SF	8
Penthouse 3	3,023 SF	8

SETBACK AREA - 12,249 SF  
 TOTAL RESIDENTIAL UNITS - 300  
 DENSITY - 51.34 UNITS/ACRE  
 BUILDING AREA - 7,957,141 sq ft  
 F.A.S. - 3

TOWER HEIGHT - 114'-7"  
 \*UNIT AREA SUBJECT TO CHANGE PENDING FINAL UNIT DESIGN

**PARKING REQUIRED FOR UNIT TYPES**

No.	Unit Types	Parking ratio	Spaces	1st floor	1st floor + 2nd floor
1	1 BR/1 BA	1.25	125	25	100
2	2 BR/2 BA	1.75	210	42	168
3	3 BR/3 BA	2.36	280	56	224
4	GUESTS	1.4	70	14	56
<b>TOTAL REQ.</b>			<b>585</b>	<b>117</b>	<b>468</b>

**PARKING PROVIDED FOR UNIT TYPES**

STANDARD SPACES	=	576
HANDICAPPED SPACES	=	10
VAN SPACES	=	2
LOADING SPACES	=	5
<b>TOTAL PROVIDED</b>	=	<b>593</b>

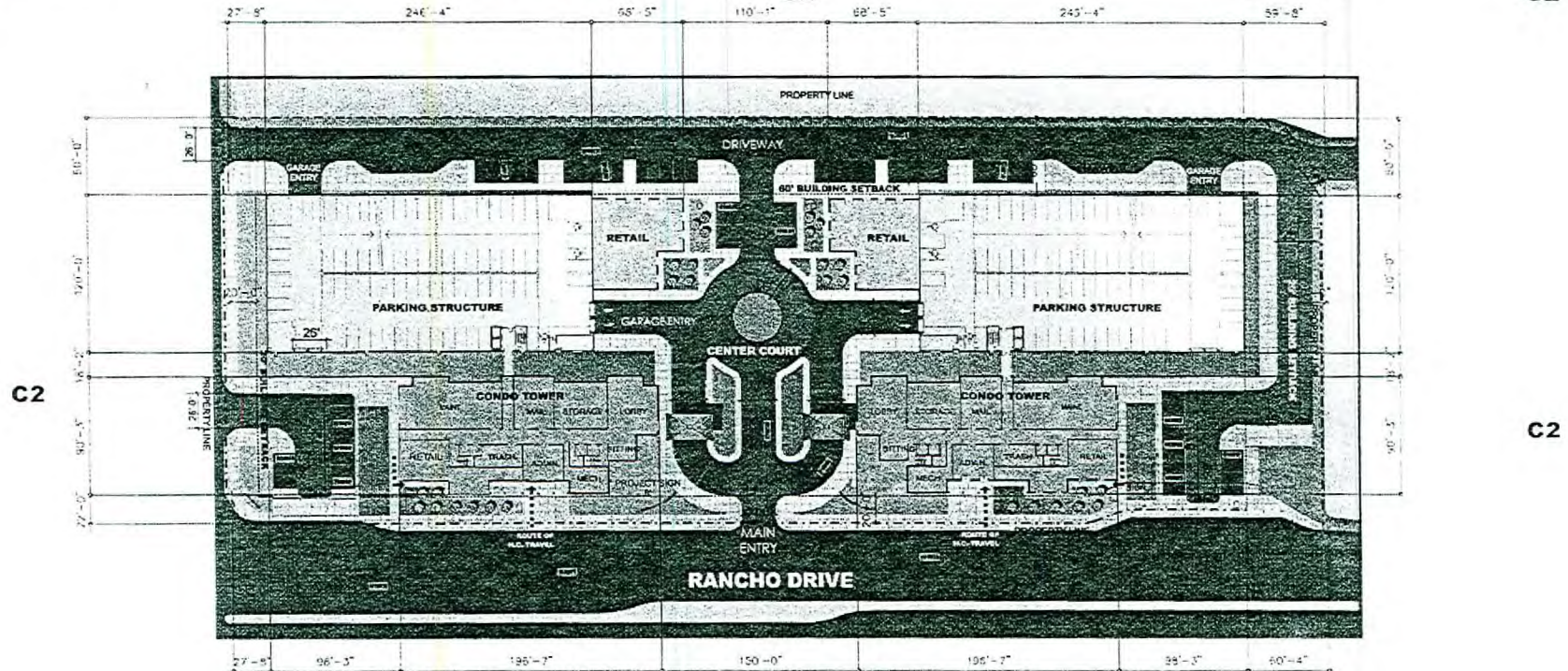
**RETAIL PARKING**

Type	Required	Provided
STANDARD SPACES (11'x20')	42	42
HANDICAPPED SPACES	2	2
VAN SPACES (11'x8' x 14'x10')	1	1
LOADING SPACES	1	1
<b>TOTAL REQ. PROVIDE</b>	<b>52</b>	<b>52</b>

ARCHITECTURAL SITE PLAN



VICINITY MAP



© 2005 BY HUMPHREYS & PARTNERS ARCHITECTS, L.P.  
 THE ORGANIZATION AND PREPARATION OF THIS PLAN  
 AND MAP WAS APPROVED FOR THE CITY OF LAS VEGAS, NV  
 ON 04/27/2005.

UNLIMITED HOTEL/CASINO RESORT

UNLIMITED HOTEL/CASINO RESORT



**PACIFIC TOWERS**

LAS VEGAS, NV

EOT-23843  
 09-19-07 CC

APRIL 27, 2005 HPA #04340

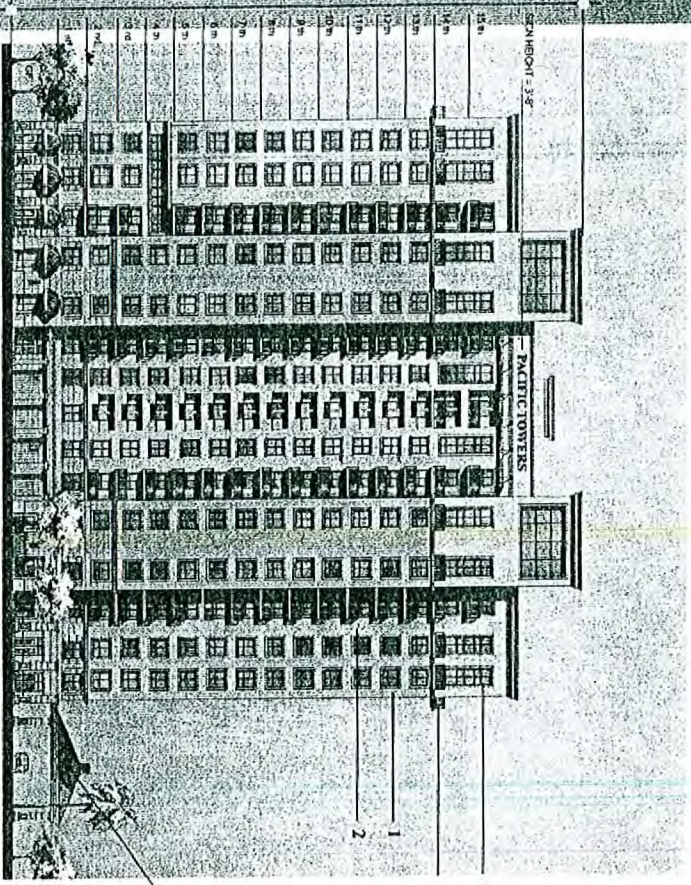
RECEIVED

D. R. INVESTMENT GROUP

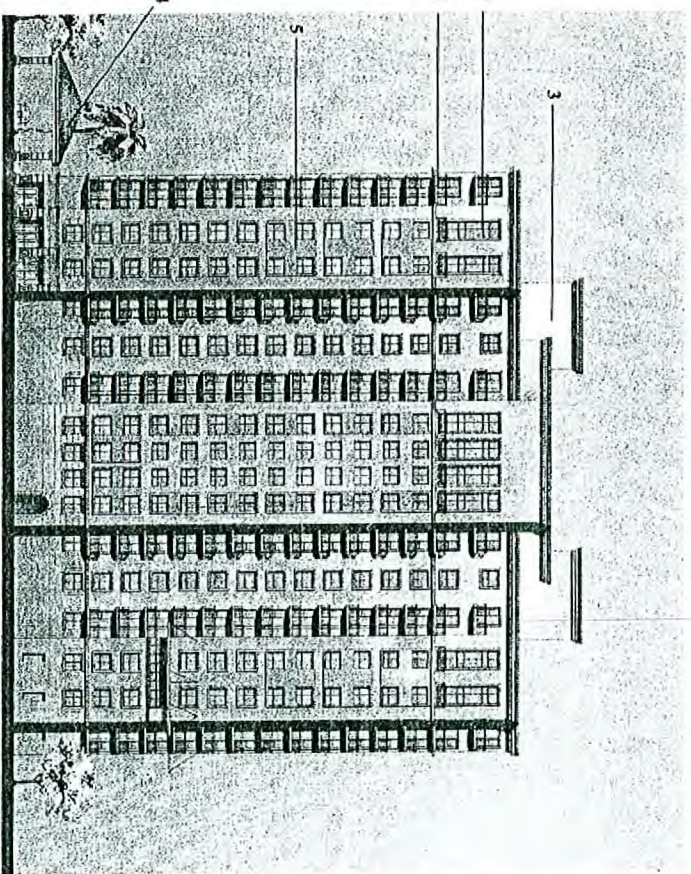


Humphreys and Partners Architects, L.P.  
 3350 ALPHEA ROAD, DALLAS, TEXAS 75243-9722, 701.893.8832

TOWER ELEVATIONS



NORTH-EAST ELEVATION



SOUTH-WEST ELEVATION

PACIFIC TOWERS

LAS VEGAS, NV

EOT-23843

09-19-07 CC

APRIL 27, 2005

HPA #04249

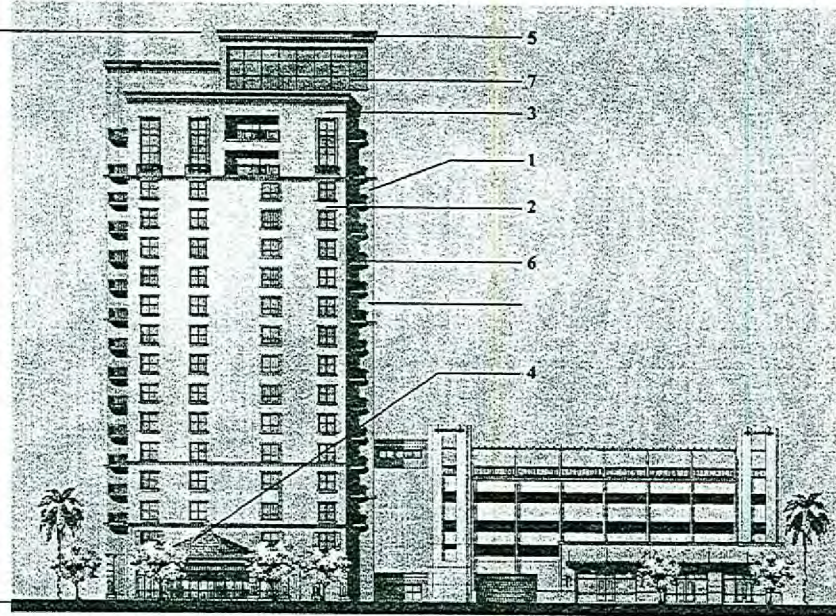


SCALE: 1/8" = 1'-0"  
 © 2005 BY HUMPHREYS & PARTNERS ARCHITECTS, L.P.  
 THE ARCHITECTS ASSUME NO LIABILITY FOR THE ACCURACY OR COMPLETENESS OF THE INFORMATION CONTAINED HEREIN OR FOR ANY OMISSIONS OR ERRORS IN THE DRAWINGS OR SPECIFICATIONS.

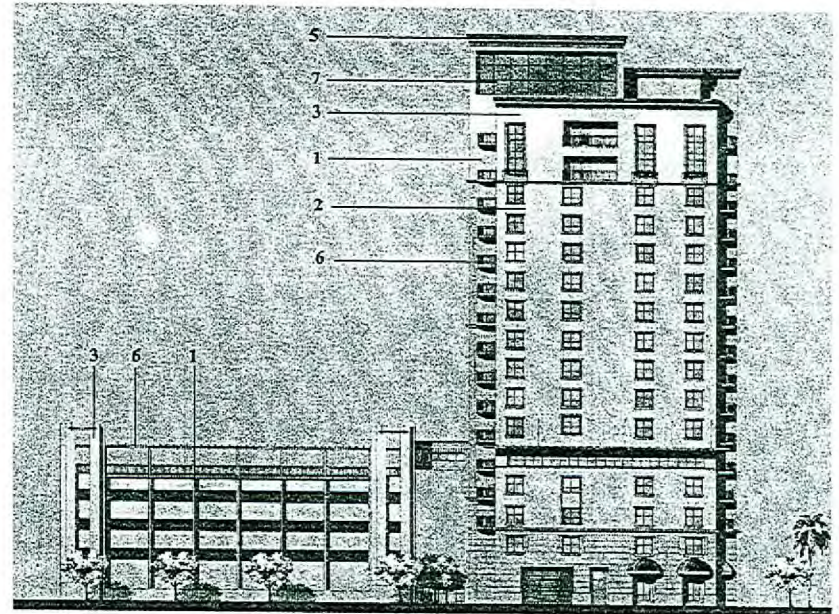


Humphreys and Partners Architects, L.P.  
 9350 ALPHA ROAD, DALLAS, TEXAS 75243-9727 214 563 6336

TOWER ELEVATIONS



NORTH-WEST ELEVATION



SOUTH-EAST ELEVATION

PACIFIC TOWERS

LAS VEGAS, NV.

SCALE: 1/4" = 1'-0"

© 2005 BY HUMPHREYS & PARTNERS ARCHITECTS, L.P.  
 THE ARCHITECTURAL DRAWINGS AND ANY OTHER INFORMATION CONTAINED HEREIN ARE THE PROPERTY OF HUMPHREYS & PARTNERS ARCHITECTS, L.P. AND MAY NOT BE REPRODUCED IN ANY FORM WITHOUT THE WRITTEN PERMISSION.

EOT-23843  
 09-19-07 CC

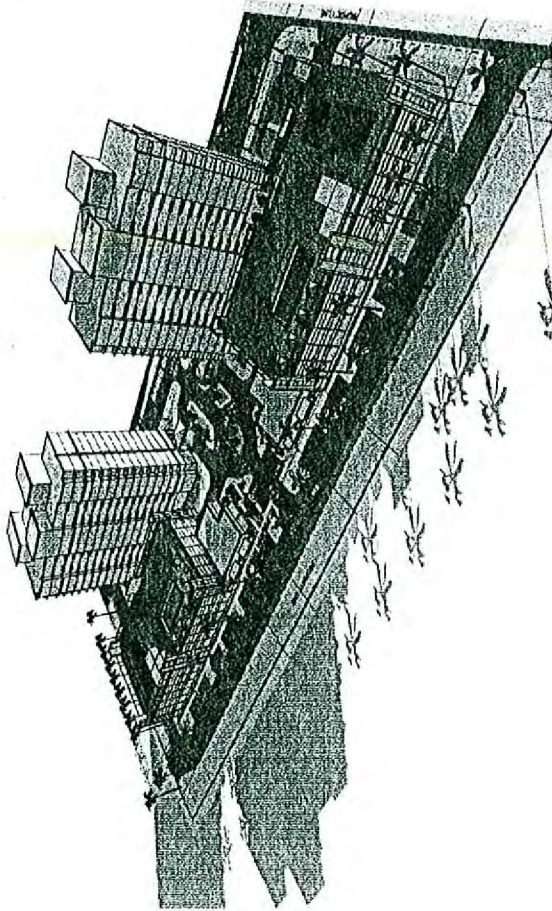
APRIL 27, 2005 HPA #04240

RECEIVED

D. R. INVESTMENT GROUP

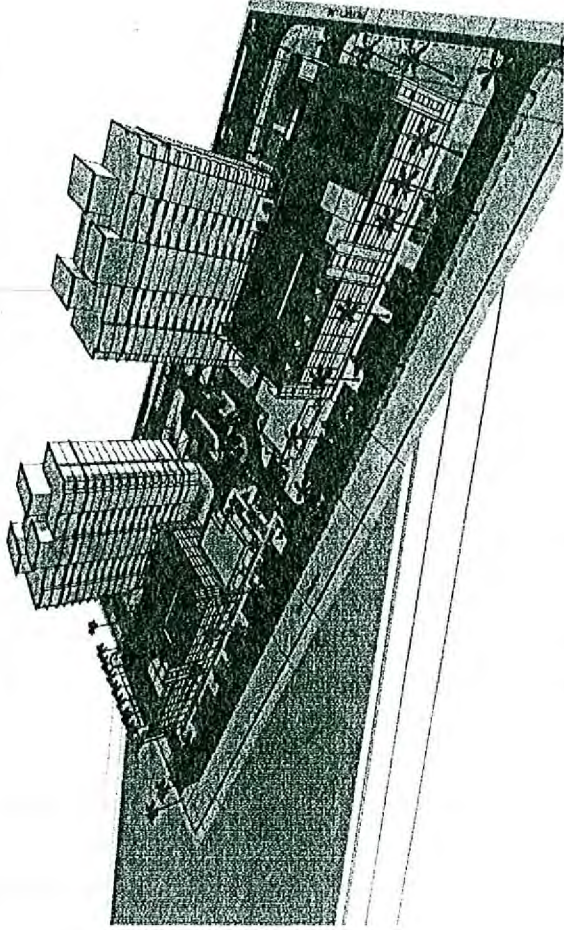
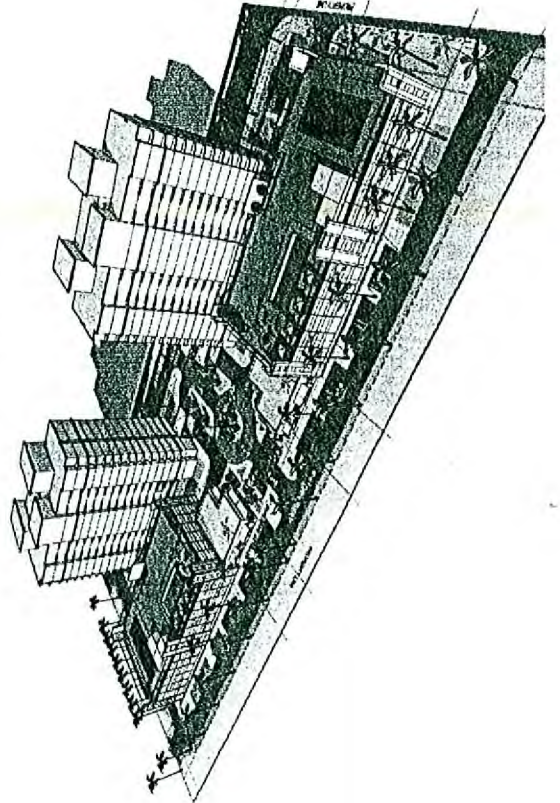
PACIFIC TOWERS PROJECT

SHADOW STUDY



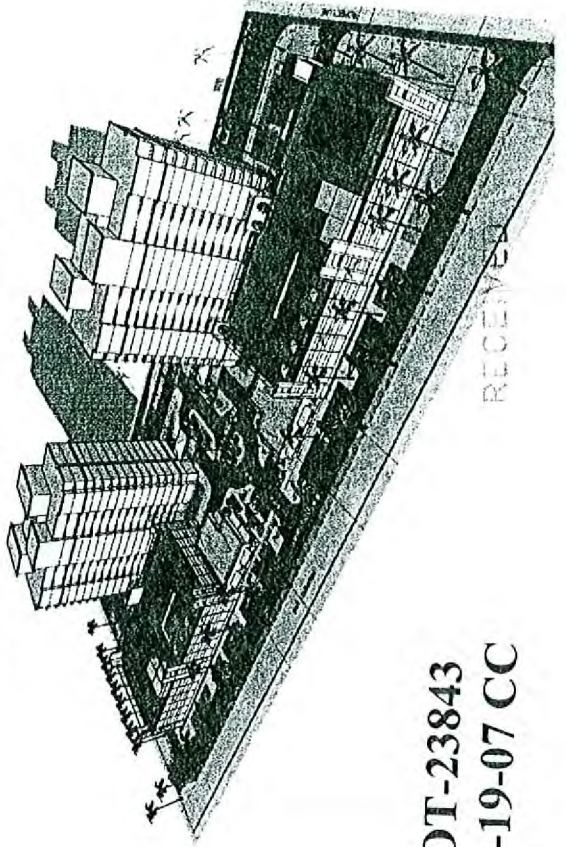
9.21 at 7:00 am FALL EQUINOX

9.21 at 3:00 pm FALL EQUINOX



12.21 at 7:00 am WINTER SOLSTICE

12.21 at 3:00 pm WINTER SOLSTICE



EOT-23843  
09-19-07 CC

RECEIVED