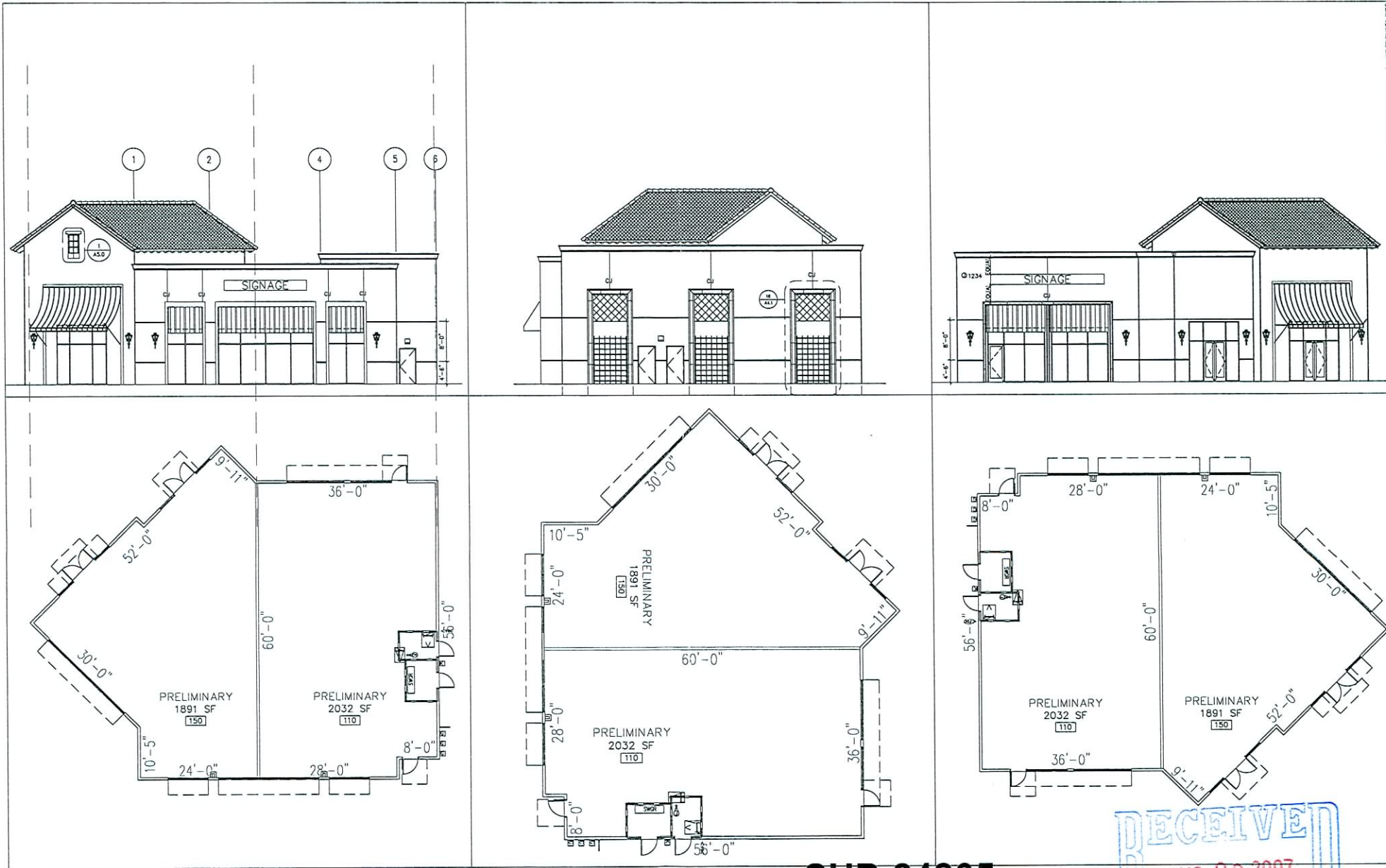




BUILDING D



**SUP-24265**  
**10/11/07 PC**

**RECEIVED**  
AUG 28 2007

APPROVED BY: \_\_\_\_\_  
 DATE: \_\_\_\_\_

**GENERAL NOTES:**

1. THESE PLANS AND THE DESIGNS CONTAINED HEREIN ARE THE PROPERTY OF LLOYD'S REFRIGERATION AND MAY NOT BE REPRODUCED OR USED BY ANYONE EITHER ALL OR IN PART, WITHOUT FIRST SECURING THE WRITTEN PERMISSION OF LLOYD'S REFRIGERATION.
2. KITCHEN EQUIPMENT CONTRACTOR (K.E.C.) TO SUPPLY ALL LABOR, TOOLS, EQUIPMENT, MATERIALS & TRANSPORTATION REQUIRED TO COMPLETE THE INSTALLATION OF ALL FOODSERVICE EQUIPMENT SHOWN ON THESE DRAWINGS, UNLESS OTHERWISE NOTED.
3. K.E.C. SHALL DELIVER ALL EQUIPMENT TO THE JOB SITE, UNCRATE, SET IN PLACE AND REMOVE ALL CRATING & PACKING FROM THE JOB SITE.
4. ALL FINAL CONNECTIONS TO SERVICES (PLUMBING, ELECT., & MECHANICAL) SHALL BE BY OTHERS AS PER ALL LOCAL CODES.
5. ONCE ALL EQUIPMENT IS CONNECTED TO SERVICES, K.E.C. SHALL SET EQUIPMENT IN PERMANENT LOCATIONS, AS PER DRAWINGS, AND SEAL TO WALLS WHERE APPLICABLE.
6. IT SHALL BE THE K.E.C.'S RESPONSIBILITY TO VERIFY ALL DIMENSIONS IN THE FIELD PRIOR TO INSTALLATION OF FOODSERVICE EQUIPMENT.

NUMBER	DATE	REVISION



LLOYD'S REFRIGERATION INC.  
 145 PEGASUS, NY 89033-5634  
 TEL: (702)739-1010  
 FAX: (702)739-6531

TAVERN IN SUMMERLIN  
 EQUIPMENT PLAN

LLOYD'S REFRIGERATION INC. DISCLAIMS LIABILITY FOR THE DESIGN SHOWN ON THIS SHEET. THE WRITTEN PERMISSION OF LLOYD'S REFRIGERATION INC. MUST OBTAIN BEFORE ANY REVISIONS ARE MADE AND COPIES BECOME LEGAL ACTION.

SCALE: 1/4" = 1'-0"  
 DATE: \_\_\_\_\_  
 DRAWN BY: SGF  
 CHECKED BY: \_\_\_\_\_  
 JOB#: DS-316  
 FILE#: K-1

SHEET NO. \_\_\_\_\_  
 K-1  
 OF SHEETS

PRELIMINARY: 7-16-07



**SUP-24265**  
**10/11/07 PC**

