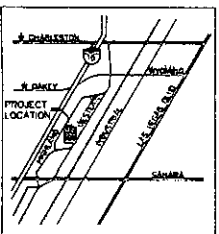


LANDSCAPE PLAN  
SCALE: 1/8" = 1'-0"



VICINITY MAP  
N.T.S.  
NORTH

- |  |                              |  |                            |
|--|------------------------------|--|----------------------------|
|  | GREEN WILLOW<br>2 1/2' PLANT |  | CORDOBA REDWOOD<br>4' TREE |
|  | GREEN CORDIA<br>6' PLANT     |  | CORDOBA REDWOOD<br>4' TREE |
|  | GREEN CORDIA<br>5' PLANT     |  | CORDOBA REDWOOD<br>4' TREE |
|  | TEXAS BAMBOO<br>6' PLANT     |  | CORDOBA REDWOOD<br>4' TREE |
|  | GREEN CORDIA<br>1' PLANT     |  | CORDOBA REDWOOD<br>4' TREE |

1. ALL PLANTINGS SHALL BE INSTALLED IN ACCORDANCE WITH THE LANDSCAPE PLAN AND THE SPECIFICATIONS FOR PLANTINGS AND MATERIALS.

2. THE CONTRACTOR SHALL BE RESPONSIBLE FOR OBTAINING ALL NECESSARY PERMITS AND APPROVALS FROM THE APPROPRIATE AGENCIES.

3. THE CONTRACTOR SHALL MAINTAIN ACCESS TO ALL ADJACENT PROPERTIES AND UTILITIES AT ALL TIMES.

4. THE CONTRACTOR SHALL PROTECT ALL EXISTING UTILITIES AND STRUCTURES.

5. THE CONTRACTOR SHALL MAINTAIN THE SITE IN A SAFE AND SOUND CONDITION AT ALL TIMES.

6. THE CONTRACTOR SHALL BE RESPONSIBLE FOR THE PROTECTION AND MAINTENANCE OF ALL PLANTINGS AND MATERIALS.

7. THE CONTRACTOR SHALL BE RESPONSIBLE FOR THE PROTECTION AND MAINTENANCE OF ALL UTILITIES AND STRUCTURES.

8. THE CONTRACTOR SHALL BE RESPONSIBLE FOR THE PROTECTION AND MAINTENANCE OF ALL ADJACENT PROPERTIES AND UTILITIES.

9. THE CONTRACTOR SHALL BE RESPONSIBLE FOR THE PROTECTION AND MAINTENANCE OF ALL EXISTING UTILITIES AND STRUCTURES.

10. THE CONTRACTOR SHALL BE RESPONSIBLE FOR THE PROTECTION AND MAINTENANCE OF ALL ADJACENT PROPERTIES AND UTILITIES.

11. THE CONTRACTOR SHALL BE RESPONSIBLE FOR THE PROTECTION AND MAINTENANCE OF ALL PLANTINGS AND MATERIALS.

12. THE CONTRACTOR SHALL BE RESPONSIBLE FOR THE PROTECTION AND MAINTENANCE OF ALL UTILITIES AND STRUCTURES.

13. THE CONTRACTOR SHALL BE RESPONSIBLE FOR THE PROTECTION AND MAINTENANCE OF ALL ADJACENT PROPERTIES AND UTILITIES.

14. THE CONTRACTOR SHALL BE RESPONSIBLE FOR THE PROTECTION AND MAINTENANCE OF ALL EXISTING UTILITIES AND STRUCTURES.

15. THE CONTRACTOR SHALL BE RESPONSIBLE FOR THE PROTECTION AND MAINTENANCE OF ALL ADJACENT PROPERTIES AND UTILITIES.

16. THE CONTRACTOR SHALL BE RESPONSIBLE FOR THE PROTECTION AND MAINTENANCE OF ALL PLANTINGS AND MATERIALS.

17. THE CONTRACTOR SHALL BE RESPONSIBLE FOR THE PROTECTION AND MAINTENANCE OF ALL UTILITIES AND STRUCTURES.

18. THE CONTRACTOR SHALL BE RESPONSIBLE FOR THE PROTECTION AND MAINTENANCE OF ALL ADJACENT PROPERTIES AND UTILITIES.

19. THE CONTRACTOR SHALL BE RESPONSIBLE FOR THE PROTECTION AND MAINTENANCE OF ALL EXISTING UTILITIES AND STRUCTURES.

20. THE CONTRACTOR SHALL BE RESPONSIBLE FOR THE PROTECTION AND MAINTENANCE OF ALL ADJACENT PROPERTIES AND UTILITIES.

21. THE CONTRACTOR SHALL BE RESPONSIBLE FOR THE PROTECTION AND MAINTENANCE OF ALL PLANTINGS AND MATERIALS.

22. THE CONTRACTOR SHALL BE RESPONSIBLE FOR THE PROTECTION AND MAINTENANCE OF ALL UTILITIES AND STRUCTURES.

23. THE CONTRACTOR SHALL BE RESPONSIBLE FOR THE PROTECTION AND MAINTENANCE OF ALL ADJACENT PROPERTIES AND UTILITIES.

24. THE CONTRACTOR SHALL BE RESPONSIBLE FOR THE PROTECTION AND MAINTENANCE OF ALL EXISTING UTILITIES AND STRUCTURES.

25. THE CONTRACTOR SHALL BE RESPONSIBLE FOR THE PROTECTION AND MAINTENANCE OF ALL ADJACENT PROPERTIES AND UTILITIES.

26. THE CONTRACTOR SHALL BE RESPONSIBLE FOR THE PROTECTION AND MAINTENANCE OF ALL PLANTINGS AND MATERIALS.

27. THE CONTRACTOR SHALL BE RESPONSIBLE FOR THE PROTECTION AND MAINTENANCE OF ALL UTILITIES AND STRUCTURES.

28. THE CONTRACTOR SHALL BE RESPONSIBLE FOR THE PROTECTION AND MAINTENANCE OF ALL ADJACENT PROPERTIES AND UTILITIES.

29. THE CONTRACTOR SHALL BE RESPONSIBLE FOR THE PROTECTION AND MAINTENANCE OF ALL EXISTING UTILITIES AND STRUCTURES.

30. THE CONTRACTOR SHALL BE RESPONSIBLE FOR THE PROTECTION AND MAINTENANCE OF ALL ADJACENT PROPERTIES AND UTILITIES.

31. THE CONTRACTOR SHALL BE RESPONSIBLE FOR THE PROTECTION AND MAINTENANCE OF ALL PLANTINGS AND MATERIALS.

32. THE CONTRACTOR SHALL BE RESPONSIBLE FOR THE PROTECTION AND MAINTENANCE OF ALL UTILITIES AND STRUCTURES.

33. THE CONTRACTOR SHALL BE RESPONSIBLE FOR THE PROTECTION AND MAINTENANCE OF ALL ADJACENT PROPERTIES AND UTILITIES.

34. THE CONTRACTOR SHALL BE RESPONSIBLE FOR THE PROTECTION AND MAINTENANCE OF ALL EXISTING UTILITIES AND STRUCTURES.

35. THE CONTRACTOR SHALL BE RESPONSIBLE FOR THE PROTECTION AND MAINTENANCE OF ALL ADJACENT PROPERTIES AND UTILITIES.

36. THE CONTRACTOR SHALL BE RESPONSIBLE FOR THE PROTECTION AND MAINTENANCE OF ALL PLANTINGS AND MATERIALS.

37. THE CONTRACTOR SHALL BE RESPONSIBLE FOR THE PROTECTION AND MAINTENANCE OF ALL UTILITIES AND STRUCTURES.

38. THE CONTRACTOR SHALL BE RESPONSIBLE FOR THE PROTECTION AND MAINTENANCE OF ALL ADJACENT PROPERTIES AND UTILITIES.

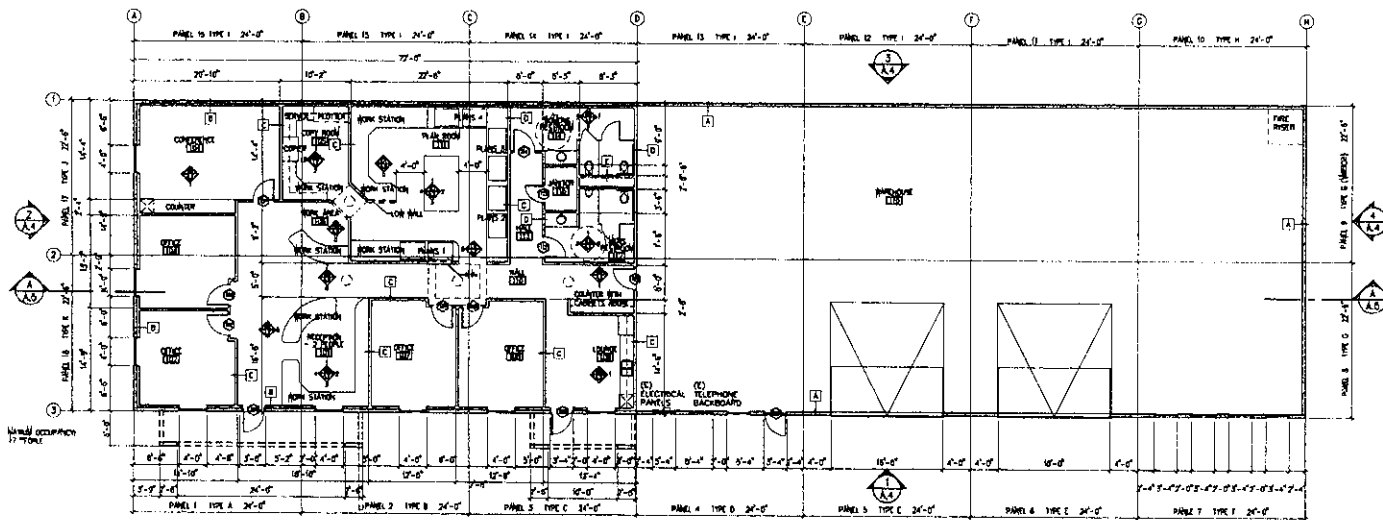
39. THE CONTRACTOR SHALL BE RESPONSIBLE FOR THE PROTECTION AND MAINTENANCE OF ALL EXISTING UTILITIES AND STRUCTURES.

40. THE CONTRACTOR SHALL BE RESPONSIBLE FOR THE PROTECTION AND MAINTENANCE OF ALL ADJACENT PROPERTIES AND UTILITIES.

LANDSCAPE PLAN  
SCALE: 1/8" = 1'-0"

**VAR-25058**  
**11/29/07 PC**





FLOOR PLAN  
SCALE: 1/8" = 1'-0"

VAR-25058  
11/29/07 PC

PROJECT NO. 07-000000  
DATE 11/29/07  
DRAWN BY [Name]  
CHECKED BY [Name]  
APPROVED BY [Name]

NO. OF SHEETS 1  
SHEET NO. 1

O'ROURKE  
PLUMBING  
1716 HIGHLAND DR  
LAS VEGAS, NV  
89102



DATE 11/29/07  
PROJECT NO. 07-000000  
SHEET NO. 1  
DRAWN BY [Name]  
CHECKED BY [Name]  
APPROVED BY [Name]

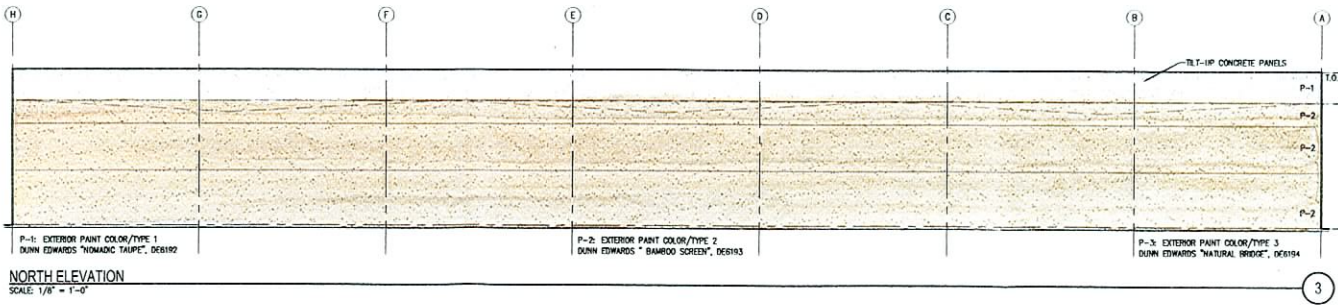
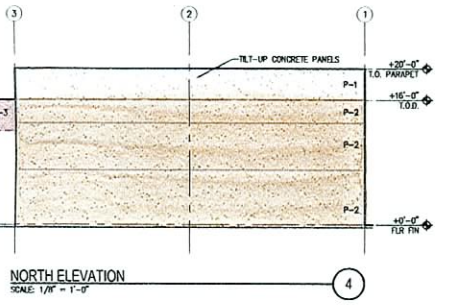
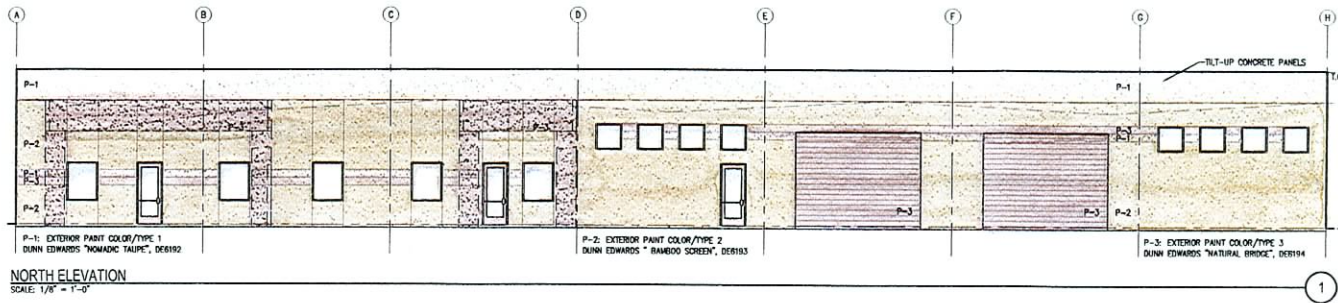
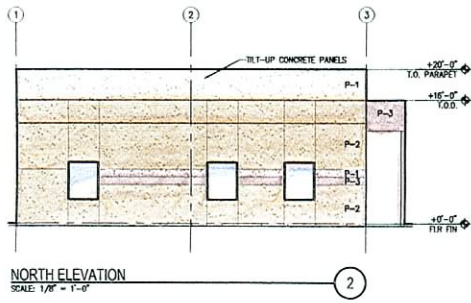


FLOOR PLAN

NO. OF SHEETS 1  
SHEET NO. 1  
A1.1

Figures of the Drawings and Specifications prepared by the Contractor for use only. The Contractor shall be responsible for the construction of the work shown on the drawings.

CONTRACT



PROJECT TITLE

O'ROURKE PLUMBING

1716 HIGHLAND

LAS VEGAS, NV 89102



DATE: 10/23/07  
 PROJECT: 1716 HIGHLAND  
 DRAWN BY: JCP  
 CHECKED BY: JCP  
 DATE: 10/23/07

PROJECT TITLE



SHEET TITLE

EXTERIOR ELEVATIONS

SET NUMBER

A 4 1

RECEIVED  
 OCT 29 2007

VAR-25058  
 11/29/07 PC