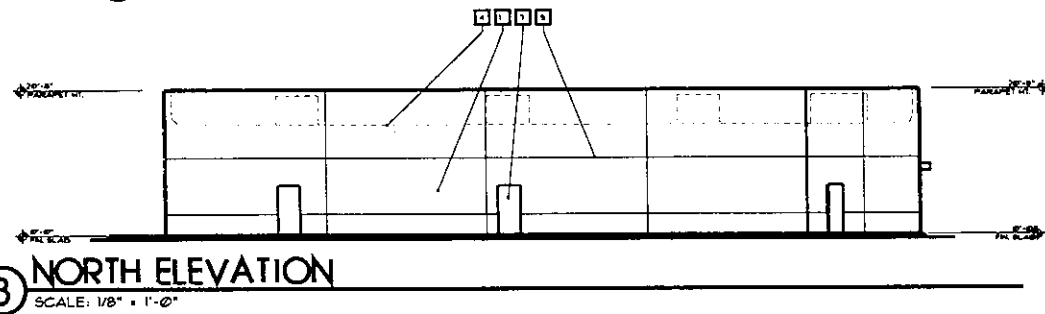
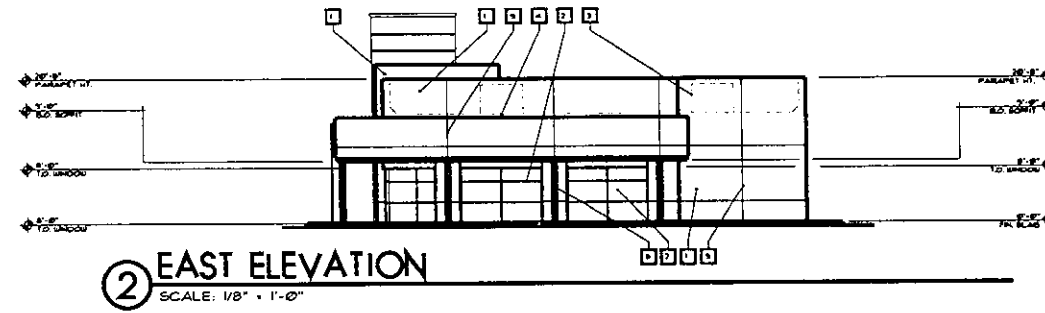


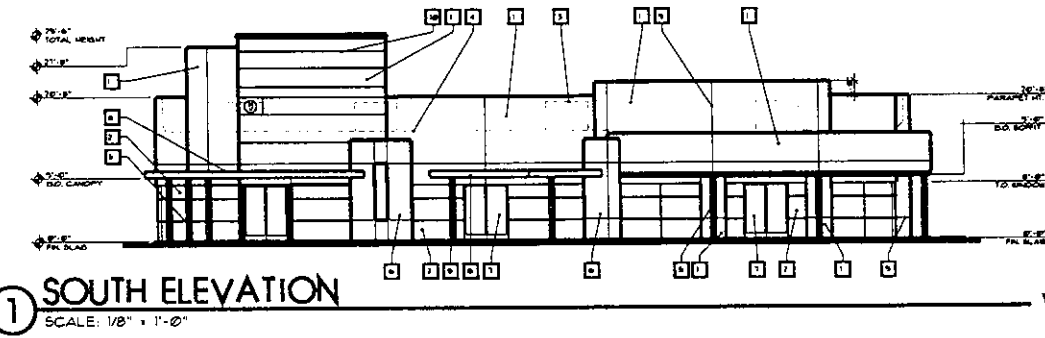
④ WEST ELEVATION
SCALE: 1/8" = 1'-0"



③ NORTH ELEVATION
SCALE: 1/8" = 1'-0"



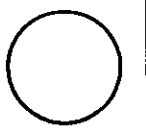
② EAST ELEVATION
SCALE: 1/8" = 1'-0"



① SOUTH ELEVATION
SCALE: 1/8" = 1'-0"

KEYNOTES	
#	description
1	1/8" STUCCO ON PAPERBACKED MESHURE (BAND FINISH)
2	ALUMINUM STOREFRONT GLAZING - SEE DOOR & WINDOW SCHEDULE
3	LINE OF MECHANICAL EQUIPMENT DETYOND
4	LINE OF ROOF DETYOND
5	PAINTED STEEL PIPE COLUMN
6	STUCCO COLUMN
7	DOOR - SEE PLAN AND SCHEDULE
8	DECORATIVE STEEL ASHING
9	STUCCO CONTROL JOINT
10	STUCCO REVEAL
11	DRIVE THRU WINDOW

RECEIVED



REVISIONS

NO.	DATE	DESCRIPTION

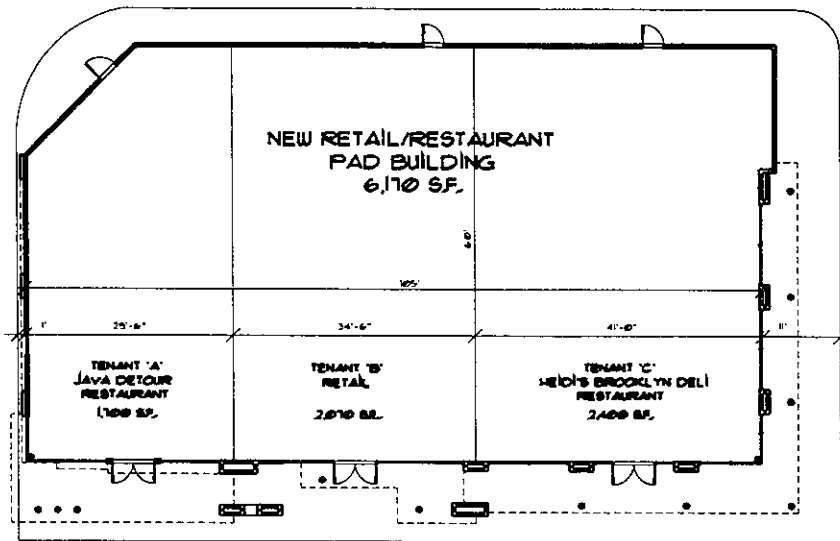
JOHN DUMIC ARCHITECT
 3411 W. COLLIERO ROAD • SUITE 100 • LAS VEGAS, NV 89118 • (702) 735-1263

RESTAURANT PAD
 2301 East Sahara
 for Eagle Group, LLC
 City of Las Vegas Nevada

0018
 PROJ. NO. 1001104
 DRAWN BY
 CHD. BY

SHEET NO. **A2**

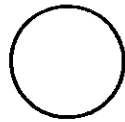
VAR-23547
SDR-23545
09/13/07 PC



① FLOOR PLAN
SCALE: 1/8" = 1'-0"



RECEIVED



REVISIONS

NO.	DATE	DESCRIPTION
1		
2		
3		

JOHN
COUL
DUMIC, ARCHITECT
3411 W. COLEMAN ROAD, SUITE 100, LAS VEGAS, NV 89118 (702) 878-1863

RESTAURANT PAD
2301 East Sahara
for Eagle Group, LLC
City of Las Vegas Nevada

DATE	BY
PROJ. NO.	INCH.
DATE	BY
CHKD. BY	

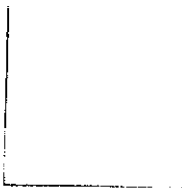
steel no.
A3

VAR-23547
SDR-23545
09/13/07 PC

COLOR/MATERIALS BOARD



(1) 20% OFF DARK FIELD:
DUNK EDWARDS DE6063 - BLACK WALNUT



(2) 20% OFF MEDIUM FIELD:
DUNK EDWARDS DE5309 - CHEESECAKE



(3) 20% OFF LIGHT FIELD:
DUNK EDWARDS DEW324 - PHOENIX HILL



(4) 20% OFF OFF-COLOR ACCENT:
DUNK EDWARDS DEW380 - WHITE



(5) 20% OFF 20% OFF 20% OFF:
DUNK EDWARDS DEW380 - SATIN FINISH

RECEIVED

JUL 31 2007

RESTAURANT
2300
for: Eagle
City of Las Vegas

John
dault
burke, architect

VAR-23547
SDR-23545
09/13/07 PC

SDR 23545				
Jay Dapper				
2301 E. Sahara Ave.				
Proposed 6.17 thousand square foot retail development.				
Traffic produced by proposed development:				
New Uses	DESCRIPTION	#UNIT	RATE/# UNIT	TOTAL
Average Daily Traffic (ADT)	FST-FOOD NO INDOOR SEAT-COFFEE [1000 SF]	1.7	1,400.00	2,380
AM Peak Hour			260.00	442
PM Peak Hour			60.00	102
<i>(heaviest 60 minutes)</i>				
Average Daily Traffic (ADT)	SHOPPING CENTER [1000 SF]	2.07	42.94	89
AM Peak Hour			1.03	2
PM Peak Hour			3.75	8
<i>(heaviest 60 minutes)</i>				
Average Daily Traffic (ADT)	HIGH-TURNOVER (SIT-DWN) RESTRNT [1000 SF]	2.4	127.15	305
AM Peak Hour			11.52	28
PM Peak Hour			10.92	26
<i>(heaviest 60 minutes)</i>				
Previous Use	DESCRIPTION	#UNIT	RATE/# UNIT	TOTAL
Average Daily Traffic (ADT)	GENERAL OFFICE BUILDING [1000 SF]	5.09	11.01	56
AM Peak Hour			1.55	8
PM Peak Hour			1.49	8
<i>(heaviest 60 minutes)</i>				
Net Change	DESCRIPTION	#UNIT	RATE/# UNIT	TOTAL
Average Daily Traffic (ADT)	SHOPPING CENTER [1000 SF]	1.08		2,718
AM Peak Hour				464
PM Peak Hour				128
<i>(heaviest 60 minutes)</i>				
Existing traffic on all nearby streets:				
Sahara Ave.				
Average Daily Traffic (ADT)	37,131			
PM Peak Hour	2970			
<i>(heaviest 60 minutes)</i>				

Eastern Ave.				
Average Daily Traffic (ADT)	49,049			
PM Peak Hour <i>(heaviest 60 minutes)</i>	3924			
Traffic Capacity of adjacent streets				
	Adjacent street ADT			
	Capacity			
Sahara Ave.	51700			
Eastern Ave.	51700			
This project will add approximately 2,718 trips per day on Sahara Ave. and Eastern Ave. This will increase the existing volumes by about 7 percent on Sahara and about 6 percent on Eastern. Sahara is at about 72 percent of capacity and Eastern is at about 95 percent of capacity.				
Based on Peak Hour use, this development will add roughly 464 additional cars into the area; which works out to about 8 every minute.				
Note that this report assumes all traffic from this development uses all named streets.				