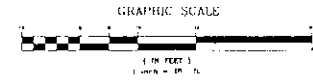


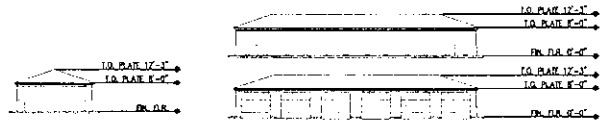
H:\P3724\TM3724-TM2.dwg, 5/17/2007 1:29:56 PM, CMH

WILLOWS AT LONE MOUNTAIN

TENTATIVE MAP
(COMMON INTEREST PLANNED UNIT COMMUNITY)



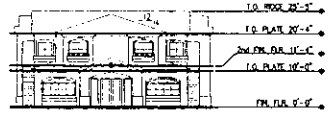
REC. BUILDING - REAR ELEV



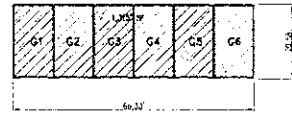
GARAGE FRONT, REAR & SIDE ELEV'S.

RESTRICTED COMMON AREAS

- PARTS AND BALCONIES
- STAIRS AND UNIT ENTRIES
- AP ENCLAVES
- OUTSIDE STORAGE ROOM
- GARAGE UNIT



REC. BUILDING - FRONT ELEV



GARAGE



BUILDING III - SIDE ELEV



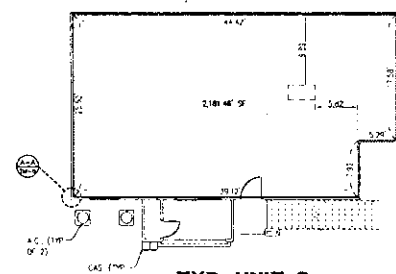
REC. BUILDING - RIGHT ELEV



BUILDING III - FRONT ELEV

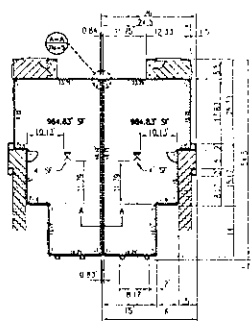


REC. BUILDING - LEFT ELEV

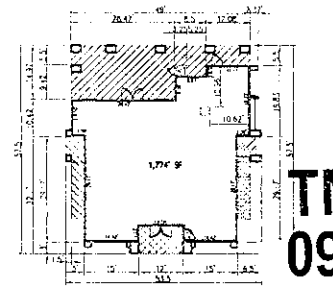


TYP. UNIT C

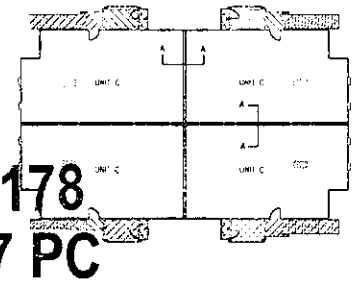
NOTE: FIRST FLOOR AND SECOND FLOOR UNITS ARE IDENTICAL



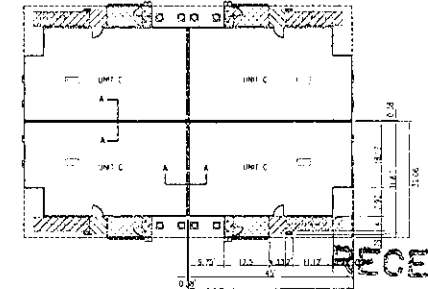
REC. BUILDING - 2ND FLOOR



REC. BUILDING - 1ST FLOOR



BUILDING III - 2ND FLOOR



BUILDING III - 1ST FLOOR

TMP-22178
09/27/07 PC

TENTATIVE MAP - FLOOR PLANS & ELEVATIONS
WILLOWS AT LONE MOUNTAIN
CONDOMINIUM CONVERSION
3540 NORTH HUAPAI WAY
CITY OF LAS VEGAS, NEVADA

HOWE ARDEN BUSINESS PARK L L C
1000 N. WILLOW WAY, SUITE 100
LAS VEGAS, NV 89115

Civiltec
REGISTERED PROFESSIONAL ENGINEER
NO. 10000
STATE OF NEVADA

SCALE: 1/8" = 1'-0"
DATE: 09/27/07
DRAWN BY: CMH
CHECKED BY: RPS
PROJECT NO.: 3724-TM

RECEIVED
MAY 28 2007
TM-4
CITY OF LAS VEGAS, NV

