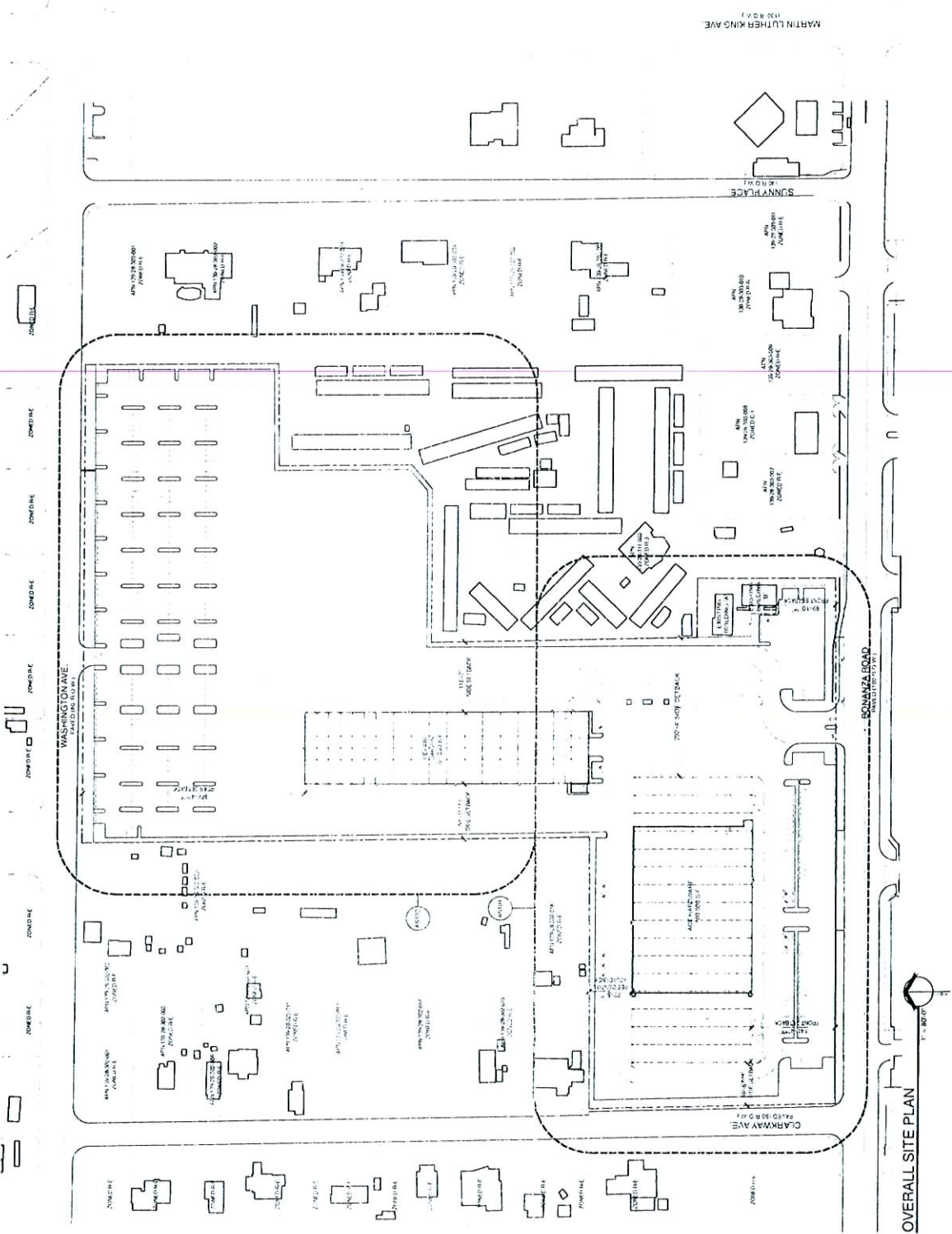


RECEIVED
JUN 14 2007



OVERALL SITE PLAN

ASI00

City of Las Vegas, NV, Submittal # 05-2187
City of Las Vegas, NV, Submittal # 06-1187

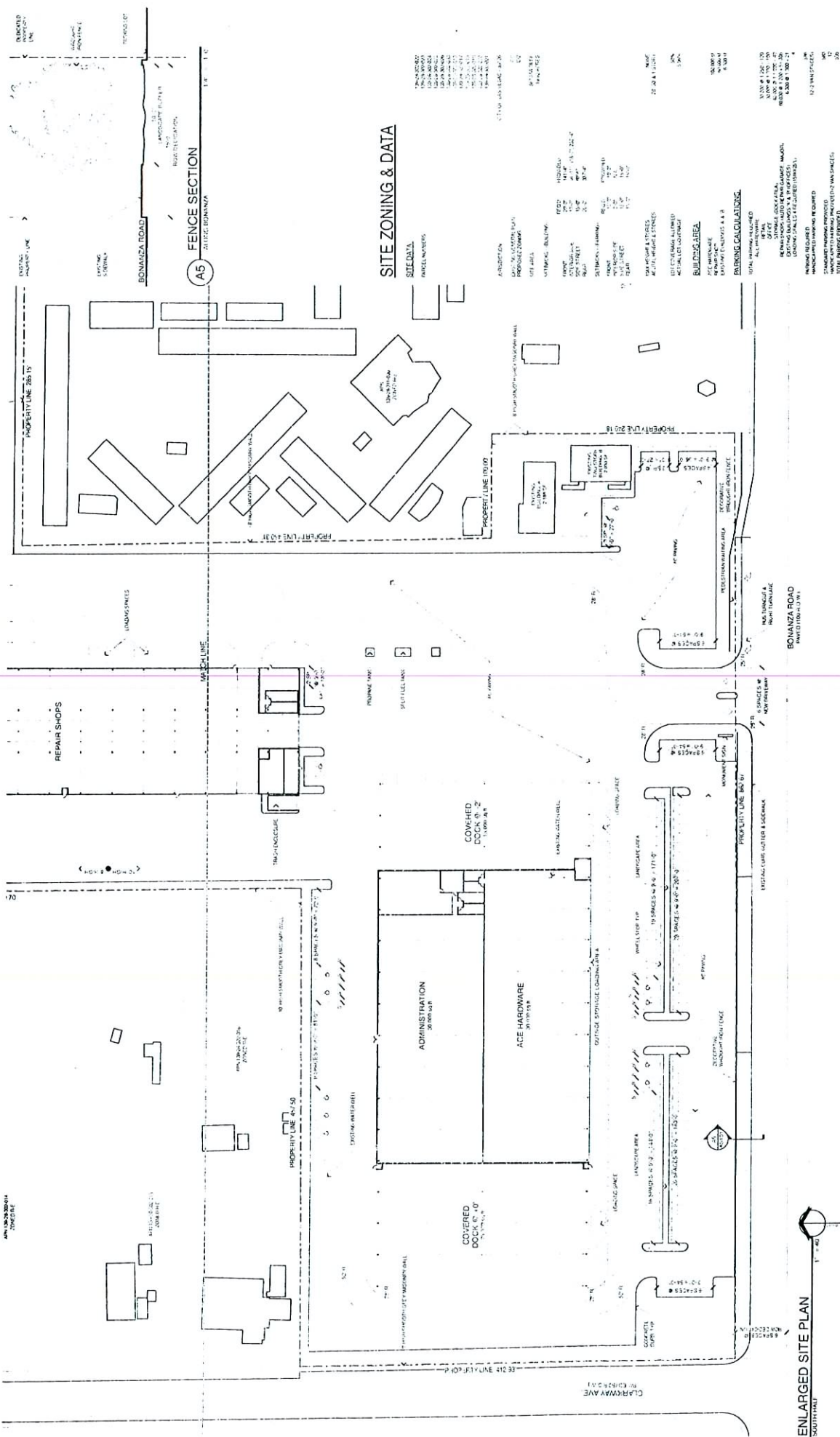
98151 - Ahern Ace - Bonanza

Ahern Ace - Bonanza
Site Development Review

1800 Bonanza Road
Las Vegas, Nevada 89106

ROC-22207 SDR-22206
REVISED 07/12/07 PC

APTUS Architecture
1000 West Sahara
Las Vegas, NV 89102
702.871.2000
702.897.1173



SITE ZONING & DATA

SITE DATA

PARCEL NUMBER: 10-24-002-001
 10-24-002-002
 10-24-002-003
 10-24-002-004
 10-24-002-005
 10-24-002-006
 10-24-002-007
 10-24-002-008
 10-24-002-009
 10-24-002-010
 10-24-002-011
 10-24-002-012
 10-24-002-013
 10-24-002-014
 10-24-002-015
 10-24-002-016
 10-24-002-017
 10-24-002-018
 10-24-002-019
 10-24-002-020

ADDITIONAL DATA

ADDITIONAL DATA: 10-24-002-001
 10-24-002-002
 10-24-002-003
 10-24-002-004
 10-24-002-005
 10-24-002-006
 10-24-002-007
 10-24-002-008
 10-24-002-009
 10-24-002-010
 10-24-002-011
 10-24-002-012
 10-24-002-013
 10-24-002-014
 10-24-002-015
 10-24-002-016
 10-24-002-017
 10-24-002-018
 10-24-002-019
 10-24-002-020

ADDITIONAL DATA

ADDITIONAL DATA: 10-24-002-001
 10-24-002-002
 10-24-002-003
 10-24-002-004
 10-24-002-005
 10-24-002-006
 10-24-002-007
 10-24-002-008
 10-24-002-009
 10-24-002-010
 10-24-002-011
 10-24-002-012
 10-24-002-013
 10-24-002-014
 10-24-002-015
 10-24-002-016
 10-24-002-017
 10-24-002-018
 10-24-002-019
 10-24-002-020

ENLARGED SITE PLAN

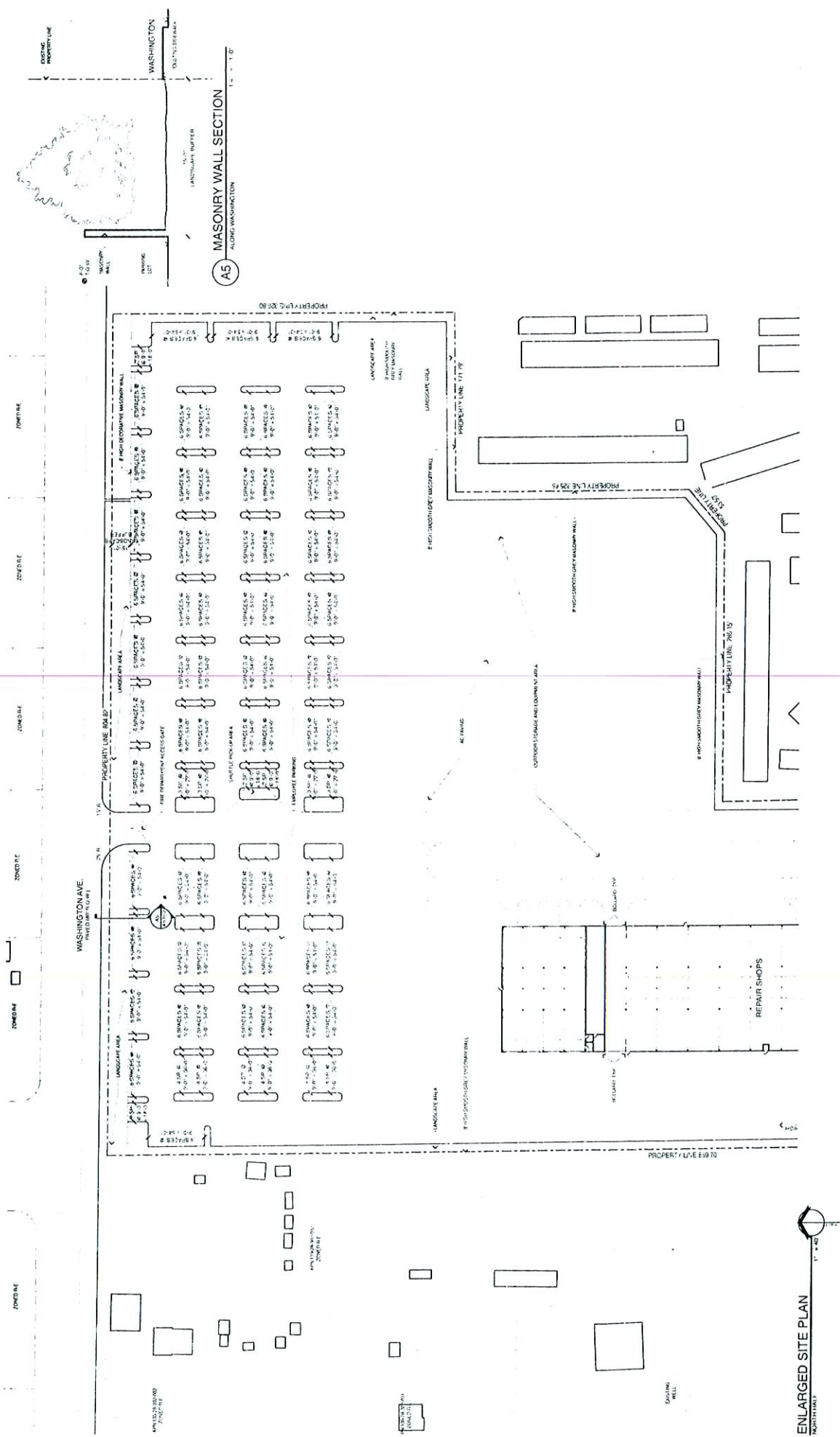
ASI 01



Ahern Ace - Bonanza
 Site Development Review
 1800 Bonanza Road
 Las Vegas, Nevada 89106

ROC-22207 SDR-22206
 REVISED 07/12/07 PC

APTUS Architecture
 1800 Bonanza Road
 Las Vegas, NV 89106
 702.879.1000
 702.879.1017



ENLARGED SITE PLAN

Ahern Ace - Bonanza
 Site Development Review
 1800 Bonanza Road
 Las Vegas, Nevada 89106

APTUS Architecture
 2000 S. Rainbow Blvd.
 Suite 200
 Las Vegas, NV 89146
 P: 702.871.2000
 F: 702.871.1711

ENLARGED SITE PLAN
 ASI02



ROC-22207 SDR-22206
 REVISED 07/12/07 PC

ENLARGED SITE PLAN
 NORTH