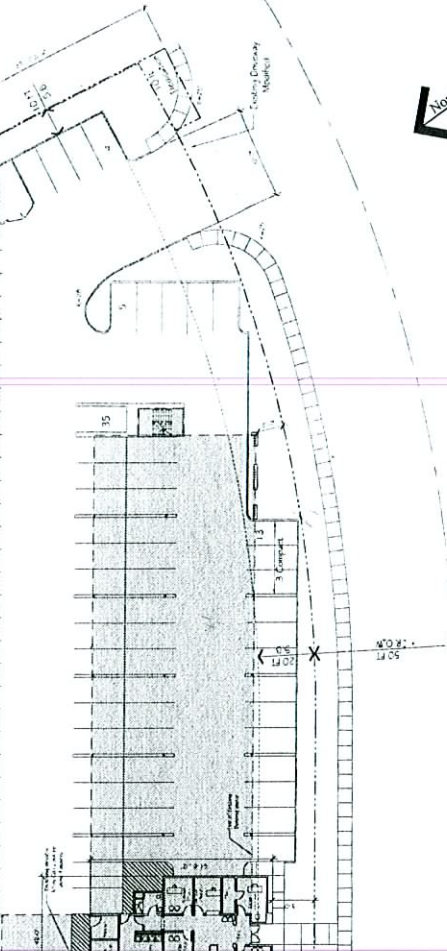


Site Information

Parcel	APN # 139-27-012-017	APN # 139-27-005-003
ZONING	C-2 General Commercial	C-2 General Commercial
AREA / APPROXIMATE	R: Remain in C-2 General Commercial	R: Remain in C-2 General Commercial
Green Area	1,100,000 sq. ft.	2,340 acres
Net Area	1,120,041 sq. ft.	2,577 acres
Setbacks	75' Side 48' Front 25' Rear	75' Side 48' Front 25' Rear
Street Frontage	20 ft	20 ft
Rear	20 ft	20 ft

Building Area	Existing Residential Units	New Units	Existing Units	Total
Existing Residential Units	54 Units	14 units	14 units	68 units
Existing Residential Units	8,500 SF	21 units	21 units	85 units
Existing Residential Units	1,025 SF	6 units	6 units	66 units
Existing Residential Units	6,100 SF	14 units	14 units	77 units
Existing Residential Units	26,618 SF	14 units	14 units	18 units
Existing Residential Units	3,901 SF	14 units	14 units	18 units
Existing Residential Units	3,908 SF	14 units	14 units	18 units
Existing Residential Units	3,908 SF	14 units	14 units	18 units
Existing Residential Units	3,908 SF	14 units	14 units	18 units
Existing Residential Units	3,908 SF	14 units	14 units	18 units
Existing Residential Units	3,908 SF	14 units	14 units	18 units
Existing Residential Units	3,908 SF	14 units	14 units	18 units
Existing Residential Units	3,908 SF	14 units	14 units	18 units
Existing Residential Units	3,908 SF	14 units	14 units	18 units
Existing Residential Units	3,908 SF	14 units	14 units	18 units
Existing Residential Units	3,908 SF	14 units	14 units	18 units
Existing Residential Units	3,908 SF	14 units	14 units	18 units
Existing Residential Units	3,908 SF	14 units	14 units	18 units
Existing Residential Units	3,908 SF	14 units	14 units	18 units
Existing Residential Units	3,908 SF	14 units	14 units	18 units
Existing Residential Units	3,908 SF	14 units	14 units	18 units
Existing Residential Units	3,908 SF	14 units	14 units	18 units
Existing Residential Units	3,908 SF	14 units	14 units	18 units
Existing Residential Units	3,908 SF	14 units	14 units	18 units
Existing Residential Units	3,908 SF	14 units	14 units </tr	

Parking Requirements	Existing	New	Total
Existing	137 Spaces	137 Spaces	274 Spaces
New	137 Spaces	137 Spaces	274 Spaces
Total	274 Spaces	274 Spaces	548 Spaces



Scale: 1" = 20'

Project # 955029 March 9, 2007

Peritman F1

RECEIVED
 SUP-20822 MAY 15 2007
 REVISED
 06/28/07 PC

Conceptual Site Plan - Scheme G

US Vets at the Meadows - Addition

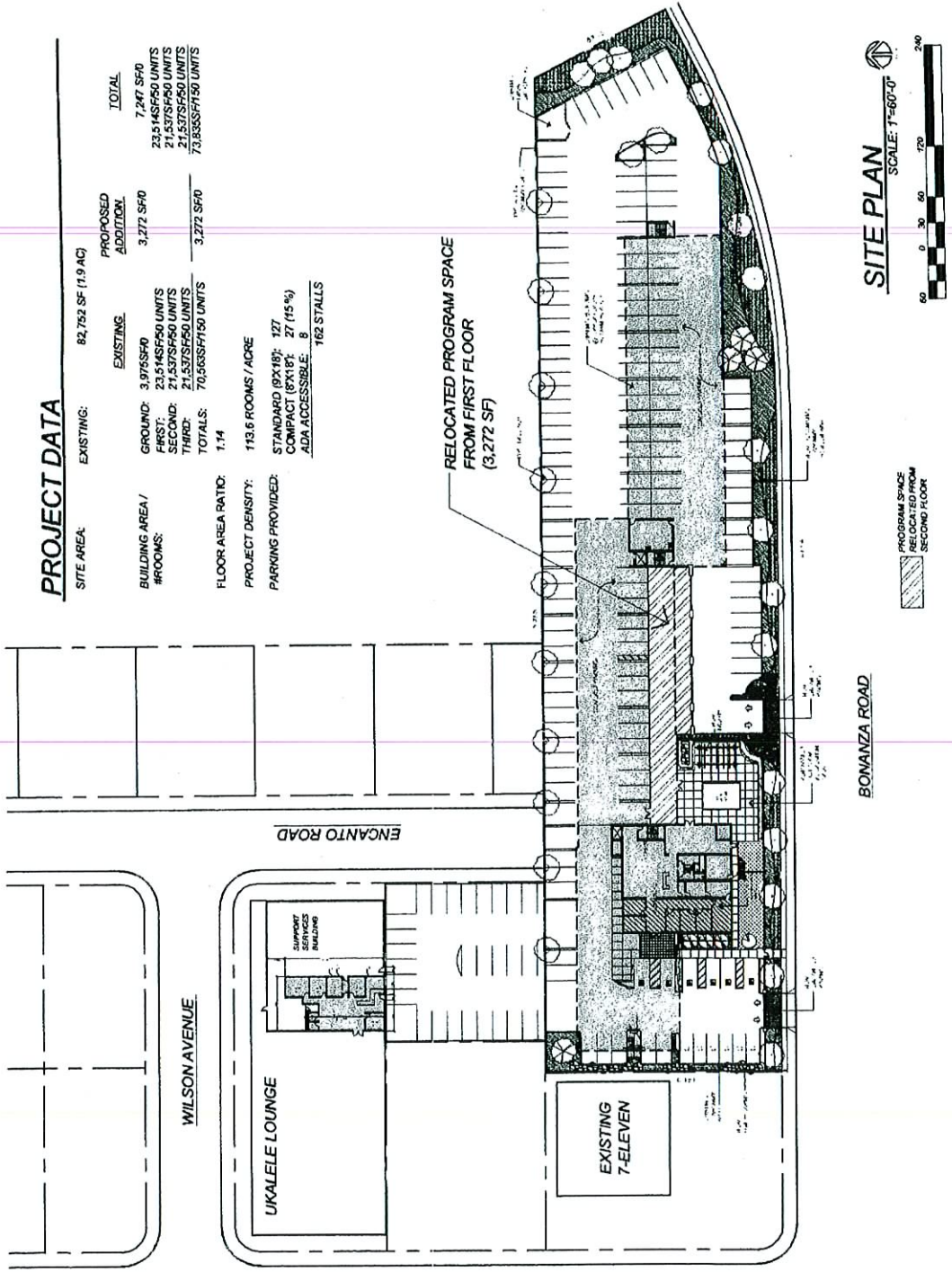
Las Vegas, Nevada

Cloudbreak Las Vegas, LLC

For information only. This is a conceptual site plan. All dimensions, areas, and volumes are approximate. All dimensions are in feet unless otherwise specified. All dimensions are rounded to the nearest foot. All dimensions are subject to change.

PROJECT DATA

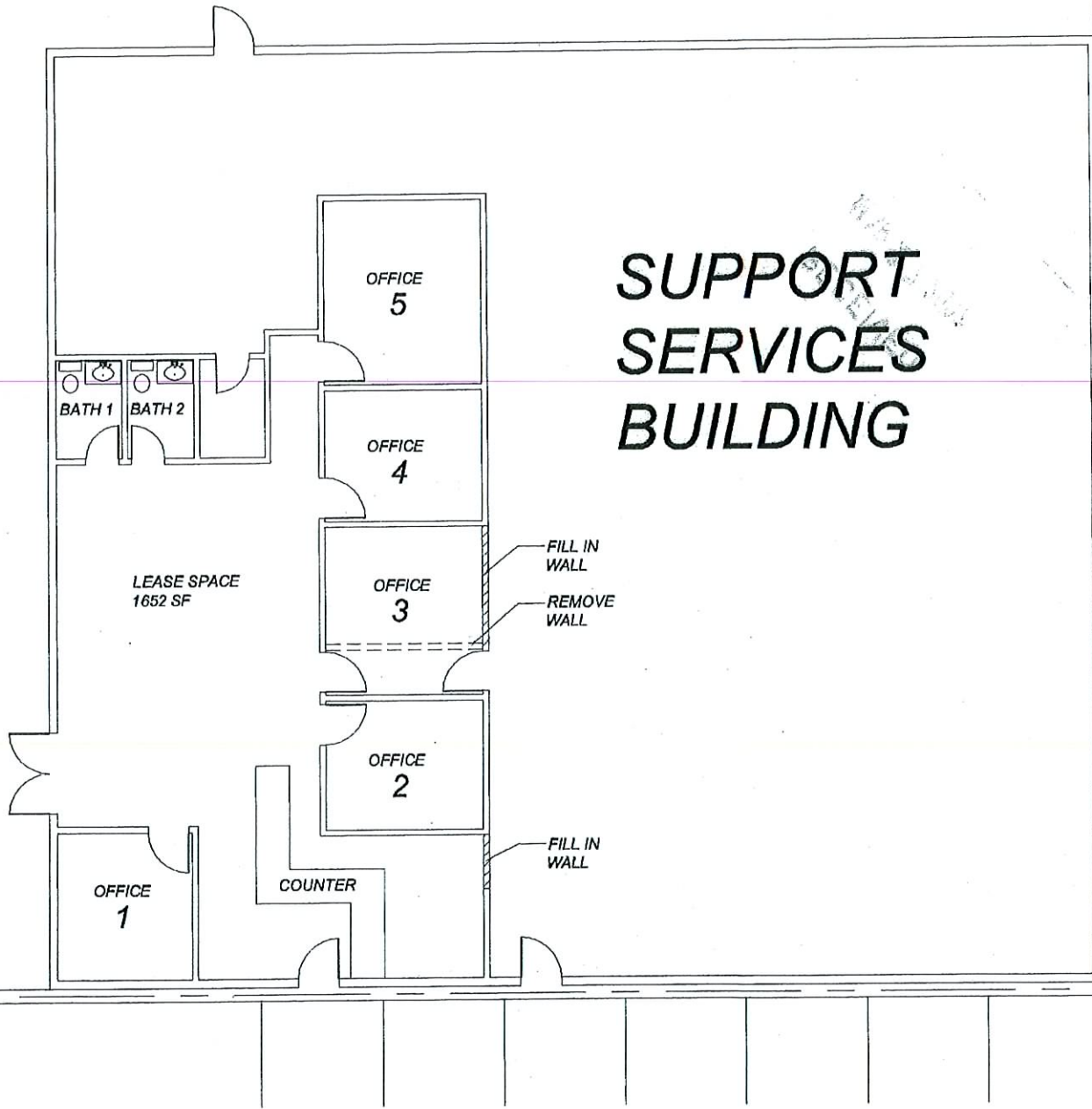
SITE AREA:		EXISTING:	82,752 SF (1.9 AC)	PROPOSED ADDITIONAL:		TOTAL:
BUILDING AREA / #ROOMS:		EXISTING:	3,975 SF / 23,514 SF / 560 UNITS	3,272 SF / 21,537 SF / 560 UNITS	7,247 SF / 45,051 SF / 1,120 UNITS	
FLOOR AREA RATIO:		GROUND:	3,975 SF / 23,514 SF / 560 UNITS	3,272 SF / 21,537 SF / 560 UNITS	7,247 SF / 45,051 SF / 1,120 UNITS	
PROJECT DENSITY:		FIRST:	21,537 SF / 560 UNITS	21,537 SF / 560 UNITS	43,074 SF / 1,120 UNITS	
PARKING PROVIDED:		SECOND:	21,537 SF / 560 UNITS	21,537 SF / 560 UNITS	43,074 SF / 1,120 UNITS	
STANDARD (85%):		THIRD:	21,537 SF / 560 UNITS	21,537 SF / 560 UNITS	43,074 SF / 1,120 UNITS	
COMPACT (15%):		TOTALS:	70,565 SF / 160 UNITS	3,272 SF / 0 UNITS	73,837 SF / 160 UNITS	
ADA ACCESSIBLE:		FLOOR AREA RATIO:	1.14			
162 STALLS		PROJECT DENSITY:	113.6 ROOMS / ACRE			



RECEIVED
MAR 27 2007

SUP-20822
04/26/07 PC

SUPPORT SERVICES BUILDING



SUP-20822
04/26/07 PC

RECEIVED
MAR 27 2007