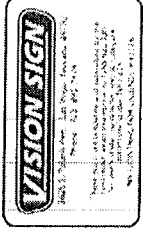




DESERT ORTHOPAEDIC CENTER  
CENTENNIAL PARKWAY

(1) SET ILLUM RPC LTRS



11420  
0402-2007  
STEPHANE  
JOB PULLING  
11/15/07

REVISED HOOK  
3/28/15  
ADD LEVY 31" RPC 155-0006 &  
155-0007

BR  
AUG 15 2007

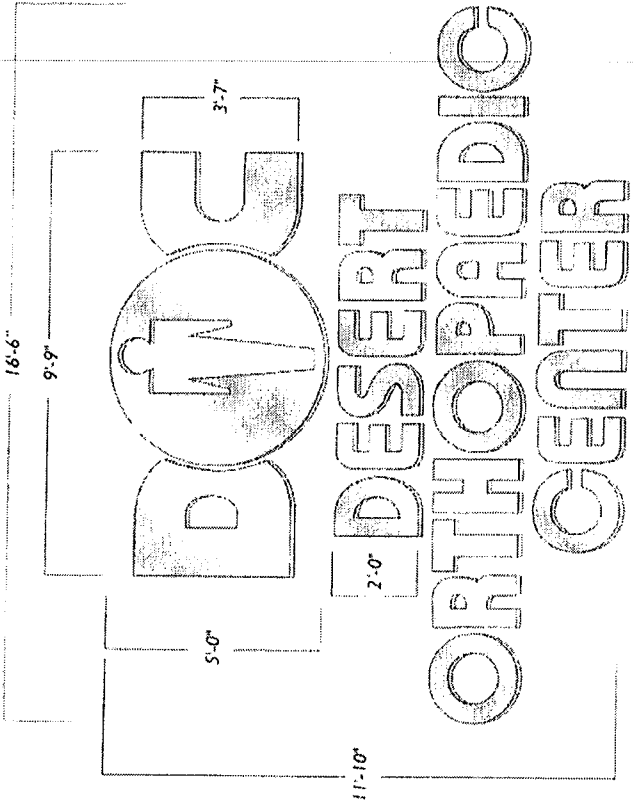
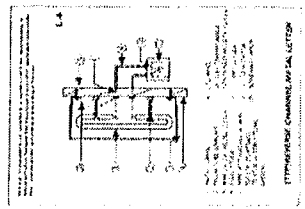
FINAL SIGN-OFF  
DATE SOLD  
SALES PERSON  
JOB#

SHEET  
001

1'-0" 0000

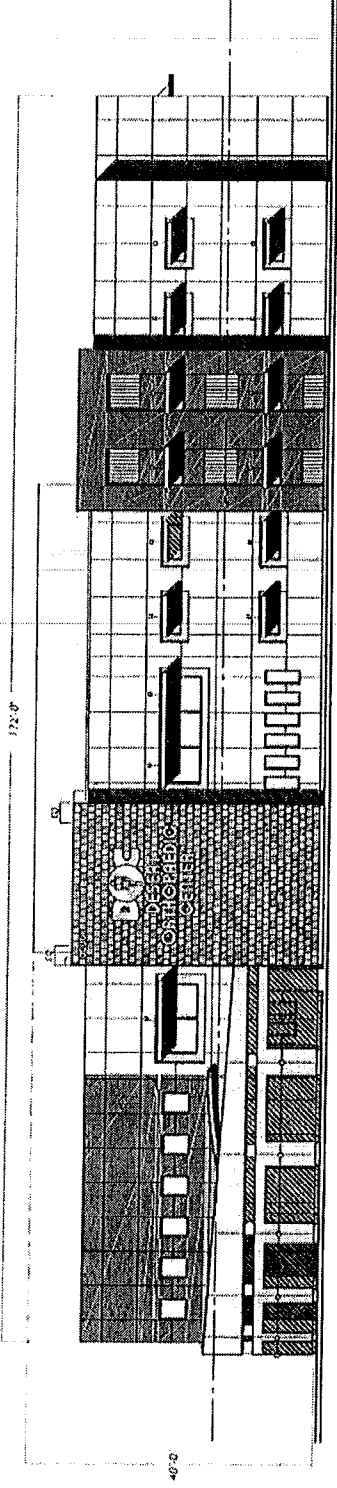
**B** (1) SET ILLUM RPC NUMBERS 1" = 1'-0"

MFG & INSTALL (1) SET ILLUM REVERSE CHANNEL ADDRESS #'S  
METALLIC SILVER FACES & METALLIC SILVER RETURNS.  
-ILLUM W/ 15MM NEON AS REQ'D.



**A** (1) SET ILLUM REVERSE CHANNEL LTRS. & LOGO 3/8" = 1'-0"

MFG & INSTALL (1) SET ILLUM REVERSE CHANNEL LETTERS  
METALLIC SILVER FACES & METALLIC SILVER RETURNS.  
-ILLUM W/ 15MM NEON AS REQ'D.



SOUTH ELEVATION 1/16" = 1'-0"

ARC-22117  
08-15-07 CC

8/15/07

8/15/07 #106



DESERT ORTHOPAEDIC CENTER  
CENTENNIAL PARKWAY

(1) SET ILLUM RPC LTRS



VISION SIGN  
114270  
DATE: 04/05/2007  
DRAWN BY: STEPHANIE  
CHECKED BY: BOB TAYLOR  
PROJECT: 11420230R

THIS APPROVAL IS LIMITED TO THE PROJECT AND SITE SPECIFICALLY IDENTIFIED ON THIS PERMIT. ANY OTHER USES OR MODIFICATIONS ARE PROHIBITED.

REVISIONS PLACE  
DATE 2007  
BY 2007  
PROJECT 11420230R

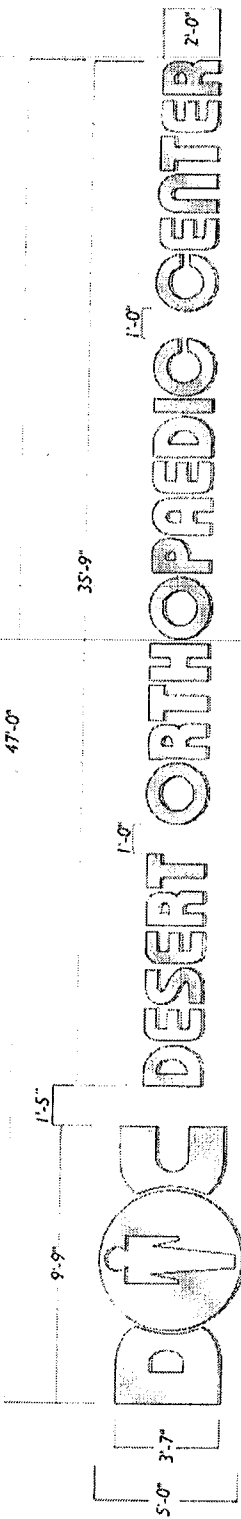
DATE 2007  
BY 2007  
PROJECT 11420230R

DATE 2007  
BY 2007  
PROJECT 11420230R

DATE 2007  
BY 2007  
PROJECT 11420230R

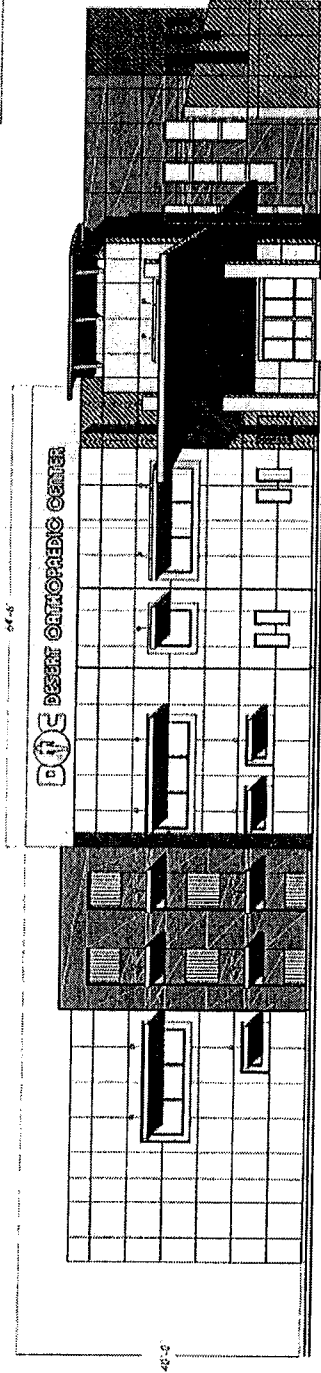
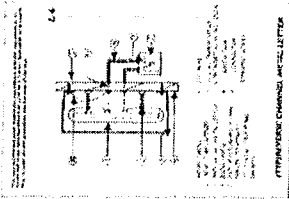
SHEET

001a



**C** (1) SET ILLUM REVERSE CHANNEL LTRS. & LOGO 1/4" = 1'-0"

MFG & INSTALL (1) SET ILLUM REVERSE CHANNEL LETTERS  
METALLIC SILVER FACES & METALLIC SILVER RETURNS.  
-ILLUM W/ 15MM NEON AS REQ'D.



NORTH ELEVATION 1/16" = 1'-0"

ARC-22117  
08-15-07 CC



**DESERT ORTHOPAEDIC CENTER**  
CENTENNIAL PARKWAY

FLOOR PLAN

**VISION SIGN**  
3425 N. CENTENNIAL PARKWAY, SUITE 100  
PHOENIX, AZ 85018  
TEL: 602-955-1100  
FAX: 602-955-1101  
WWW.VISIONSIGN.COM

THE ARCHITECT HAS PREPARED THIS PLAN TO THE BEST OF HIS KNOWLEDGE AND BELIEF. HE MAKES NO WARRANTY, REPRESENTATION OR GUARANTEE AS TO THE ACCURACY OF THE INFORMATION PROVIDED HEREON.

NO. 11-020  
DATE: 08-15-07  
PROJECT: ARCHITECTURAL DRAWING FOR MARKING FOR PAVING  
DRAWN BY: J. H. COOPER

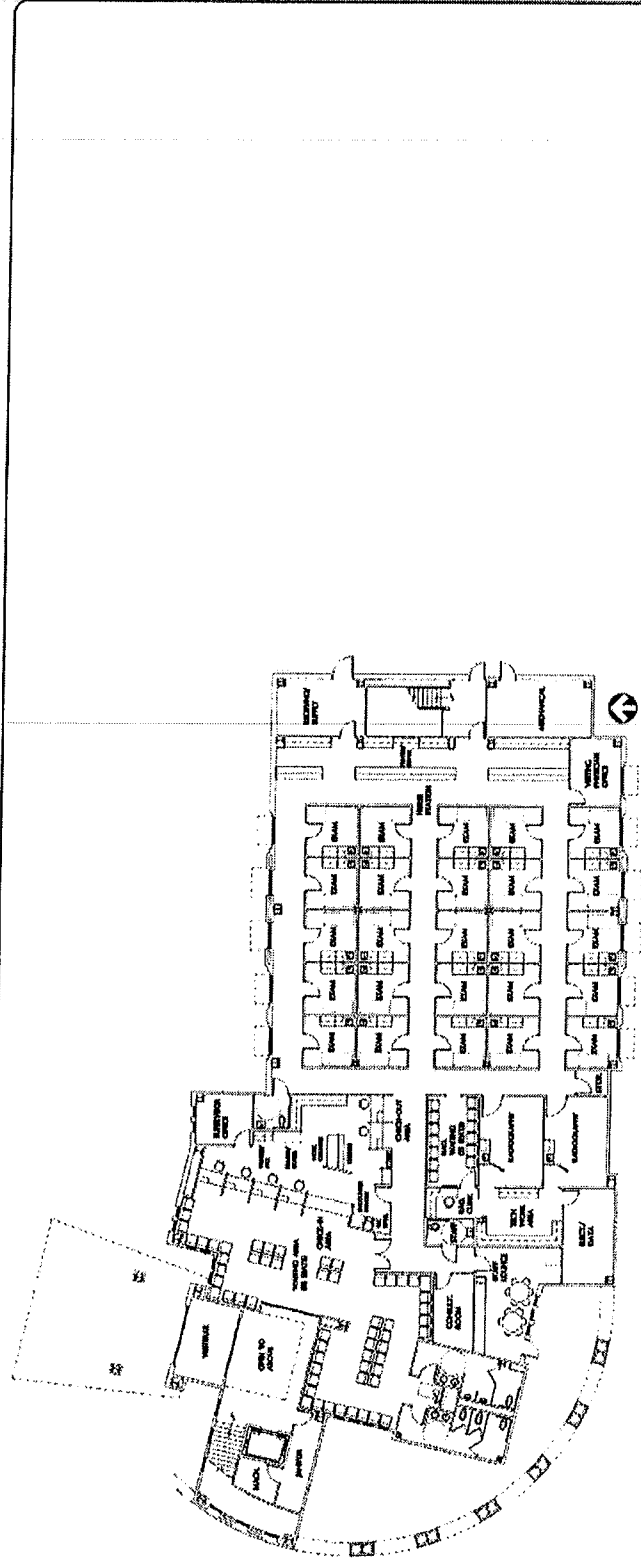
REVISIONS PAGE  
219833 ARCHITECT INC. DRAWING 4  
NO. 11-020

**REVISED**

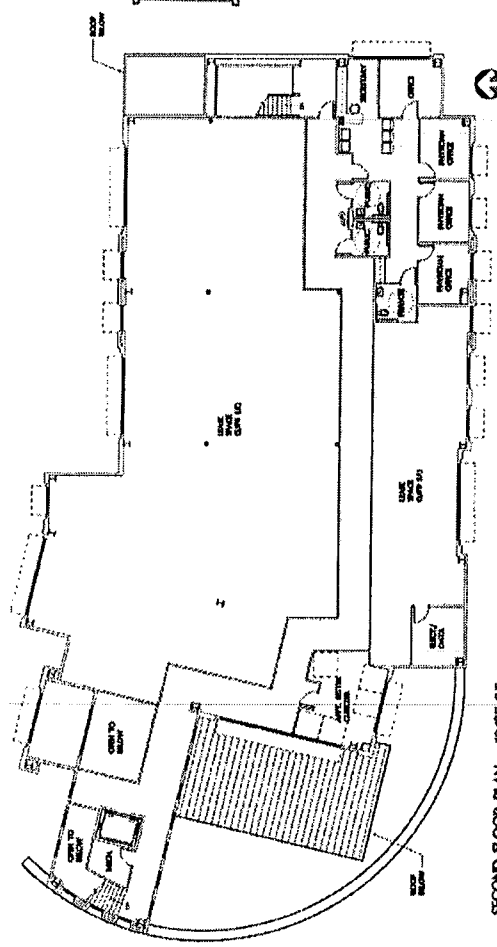
AUG 15 2007

**FINAL SIGN-OFF**  
DATE: 08/15/07  
BY: J. H. COOPER  
TITLE: ARCHITECT

SHEET **001b**



FIRST FLOOR PLAN - 11,935 SF.



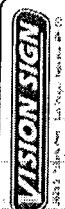
SECOND FLOOR PLAN - 10,035 SF.

ARC-22117  
08-15-07 CC



DESERT ORTHOPAEDIC CENTER  
CENTENNIAL PARKWAY

(1) D/F ILLUM  
MONUMENT



VISION SIGN  
11420  
11420  
STEPHANIE  
BOB HALLING  
11420  
VISION SIGN  
11420  
11420  
STEPHANIE  
BOB HALLING  
11420

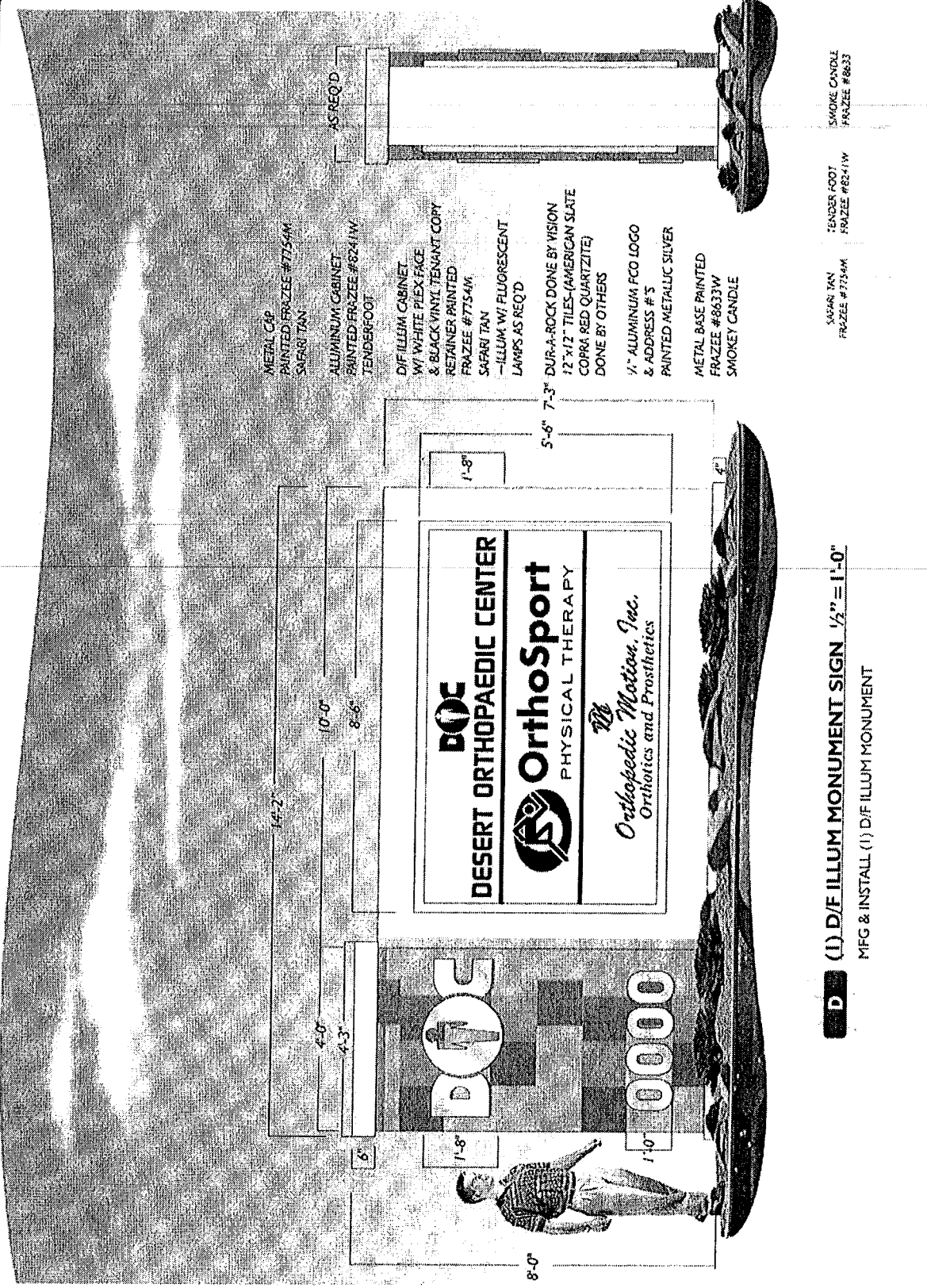
VISION SIGN  
11420  
11420  
STEPHANIE  
BOB HALLING  
11420

VISION SIGN  
11420  
11420  
STEPHANIE  
BOB HALLING  
11420

VISION SIGN  
11420  
11420  
STEPHANIE  
BOB HALLING  
11420

VISION SIGN  
11420  
11420  
STEPHANIE  
BOB HALLING  
11420

VISION SIGN  
11420  
11420  
STEPHANIE  
BOB HALLING  
11420



**D (1) D/F ILLUM MONUMENT SIGN 1/2" = 1'-0"**  
MFG & INSTALL (1) D/F ILLUM MONUMENT

ARC-22117  
08-15-07 CC

002  
SHEET

