

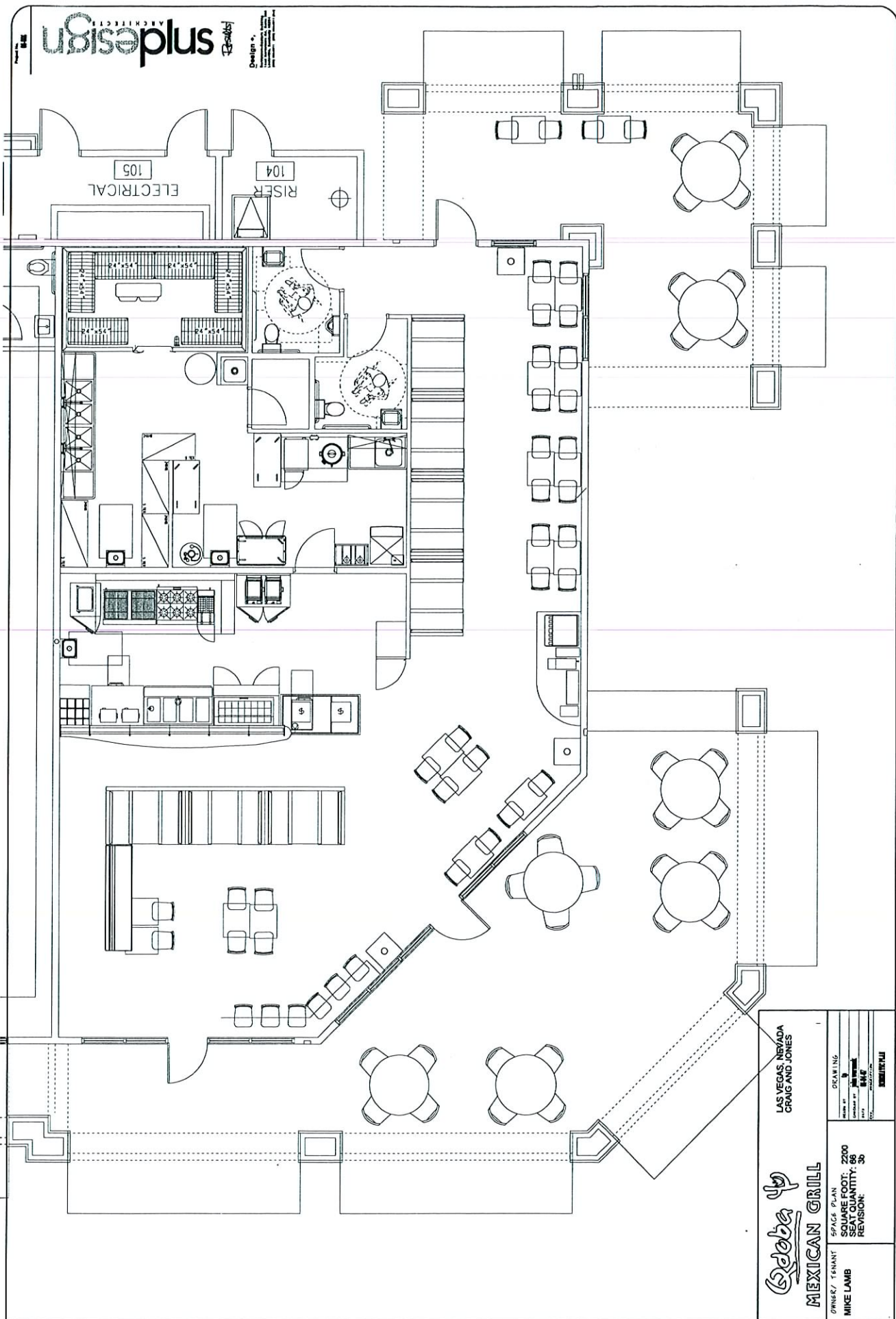
NOT A PART
 VACANT
 (ZONED R-1E WITH RD TO C-1)
 (OFFICE)

APPROVED
 BY *Dee Fluh*
 CURRENT PLANNING DIVISION
 CITY OF LAS VEGAS

SITE PLAN
 1/10/2007


SUP-22101
07/12/07 PC

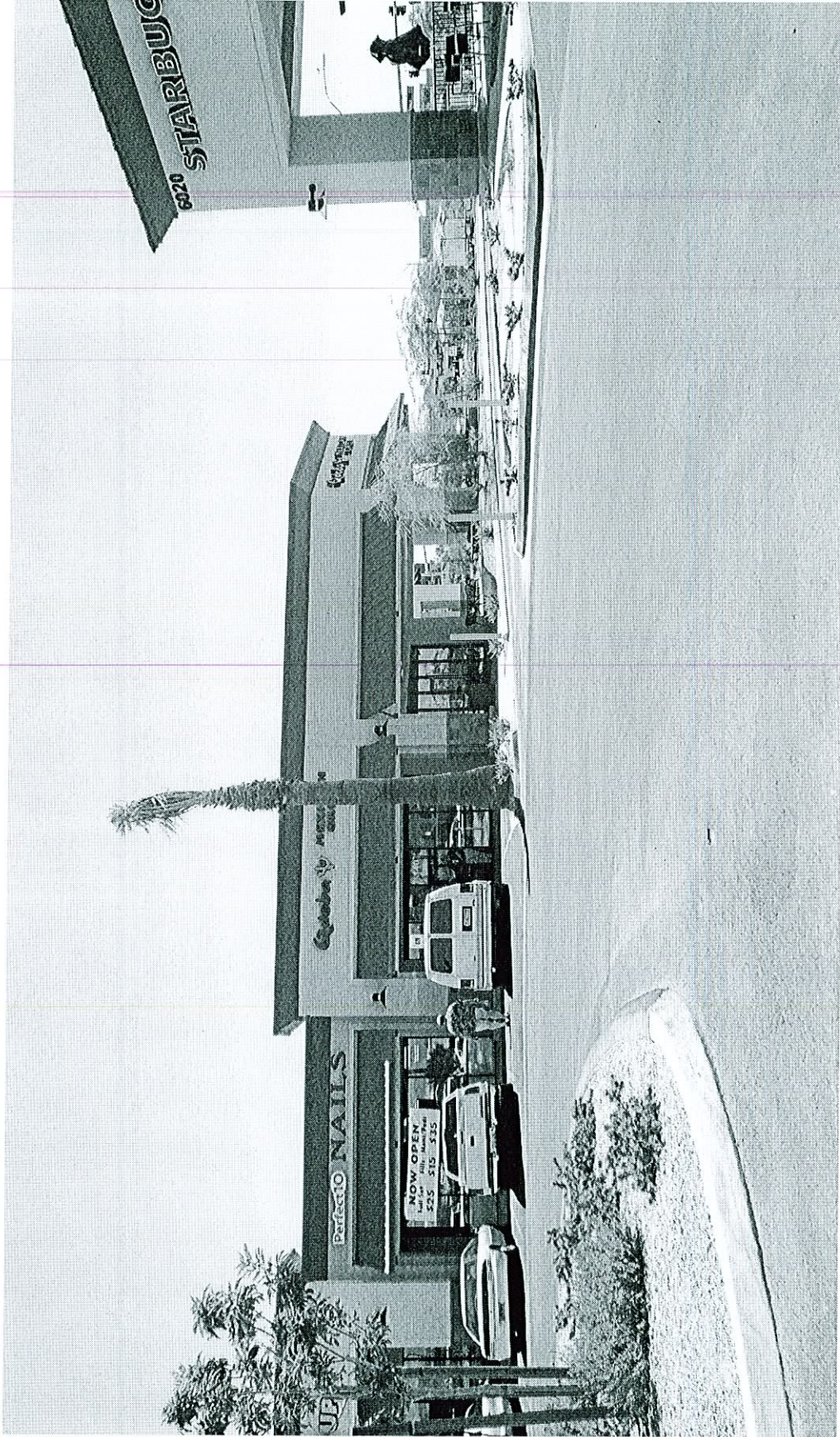
Q. DOKA
 B. IAN



SUP-22101
07/12/07 PC

MAY 15 2007

 MEXICAN GRILL	OPENSE / TENANT MIKE LAMB	DRAWING DATE: 07/12/07 DRAWN BY: [Name] CHECKED BY: [Name] PROJECT: [Name]
	LAS VEGAS, NEVADA CRAIG AND JONES	SPACE PLAN SQUARE FOOT: 2200 ITEM QUANTITY: 36 REVISION: 30



SUP-22101 - APPLICANT: OSA STRATEGIC ASSETS, LLC - OWNER: VIRGIN TERRITORY
6010 WEST CRAIG ROAD, SUITE 140
JULY 12, 2007 PLANNING COMMISSION

06/29/07