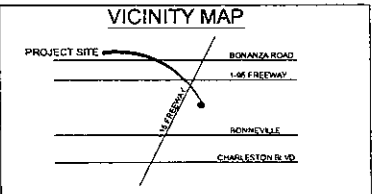


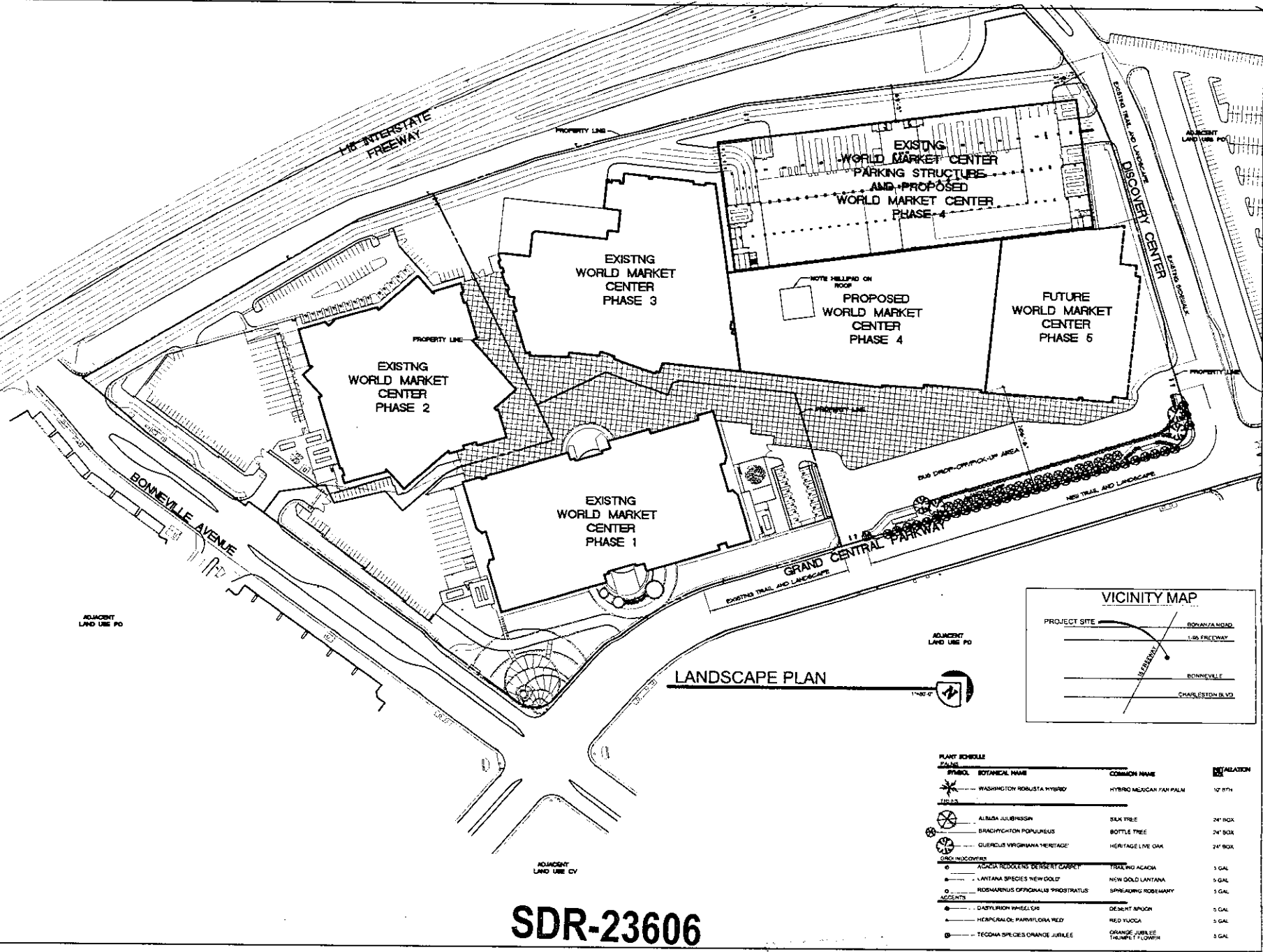
OVERALL SITE PLAN



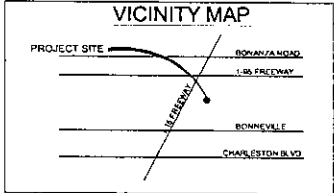
SITE DATA

JURISDICTION	City of Las Vegas
PARCEL NO	129-334-10-013
ZONING	Planned Development District 193
SITE AREA	867,280 SF 18.81 ACRES
BUILDING 4 FOOTPRINT COVERAGE BLDGS 1, 2, 3, 4, 6A	123,889 SF 14%
BUILDING SQUARE FOOTAGE	
WMC 1	1,286,820
WMC 2	1,479,751
WMC 3	1,876,856
WMC 4 and 6A	349,888
Required Spaces @ 1/1000	5,192,102
WMC 4	1,788,215
WMC 6A	706,374
Required Spaces @ 10000	2,480,091
1248	
PARKING	
SITE PARKING	SPACES
Remote Parking Lot	81
West Parking Lot	51
Accessible Parking Lot	17
Parking at Truck Stops	108
TOTAL SITE PARKING	237
PARKING GARAGE	
Level 1 Valet	0
Level 2	158
Level 3A	2865
TOTAL GARAGE PARKING	3113
TOTAL PARKING REQUIRED:	6,441
TOTAL PARKING PROVIDED:	3349
TOTAL ACCESSIBLE PARKING REQUIRED:	70
TOTAL ACCESSIBLE PARKING PROVIDED:	
Garage	74
On site	20
TOTAL PROVIDED	194

SDR-23606
09/13/07 PC



LANDSCAPE PLAN



SYMBOL	BOTANICAL NAME	COMMON NAME	QUANTITY
	WASHINGTON ROBUSTA HYBRID	HYBRID MEXICAN PAM PALM	10' BTM
	ALBIDA ALIBISSON	SAX TREE	24" BOX
	BRADYCHTON POPULREUS	BOTTLE TREE	24" BOX
	QUERCUS VIRGINIANA 'HERITAGE'	HERITAGE LIVE OAK	24" BOX
	ADONIS ROOSEVELT DESERT CACTUS	TRAILING ACACIA	3 GAL
	LANTANA SPECIES NICH DOLT	NEW GOLD LANTANA	5 GAL
	ROSEMARINUS OFFICINALIS 'PHOSTRATUS'	SPREADING ROSEMARY	5 GAL
	DASYLIRION WHIELLII	DESERT SPOON	5 GAL
	HEPACURALO PARMIFLORA REED	RED YUCCA	5 GAL
	TEODORA SPECIES ORANGE JUBILEE	ORANGE JUBILEE TRUMPET FLOWER	5 GAL

SDR-23606
09/13/07 PC

I HEREBY CERTIFY THAT THE PREPARED BY THE DESIGN PROFESSIONAL, ENGINEER, ARCHITECT, OR OTHER LICENSED PROFESSIONAL PERSONNEL, AND THAT THE DESIGN PROFESSIONAL, ENGINEER, ARCHITECT, OR OTHER LICENSED PROFESSIONAL PERSONNEL HAS REVIEWED AND APPROVED THE PREPARED BY THE DESIGN PROFESSIONAL, ENGINEER, ARCHITECT, OR OTHER LICENSED PROFESSIONAL PERSONNEL.

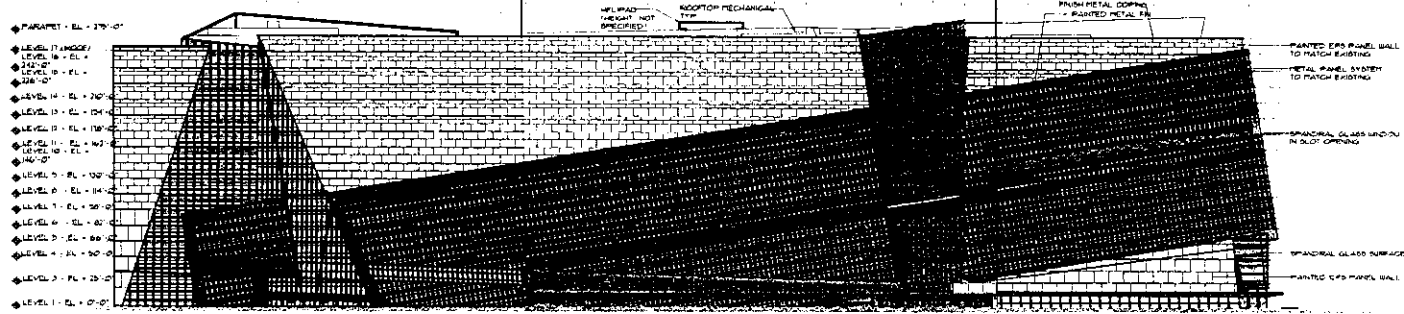
EDWARD A. VANCE
Ed Vance & Associates
900 S. Pavilion Center Dr. Ste. 160
Las Vegas, Nevada 89144
Phone 702.946.8915
Fax 702.946.8916

EV&A Job Number

Revision _____ Date _____

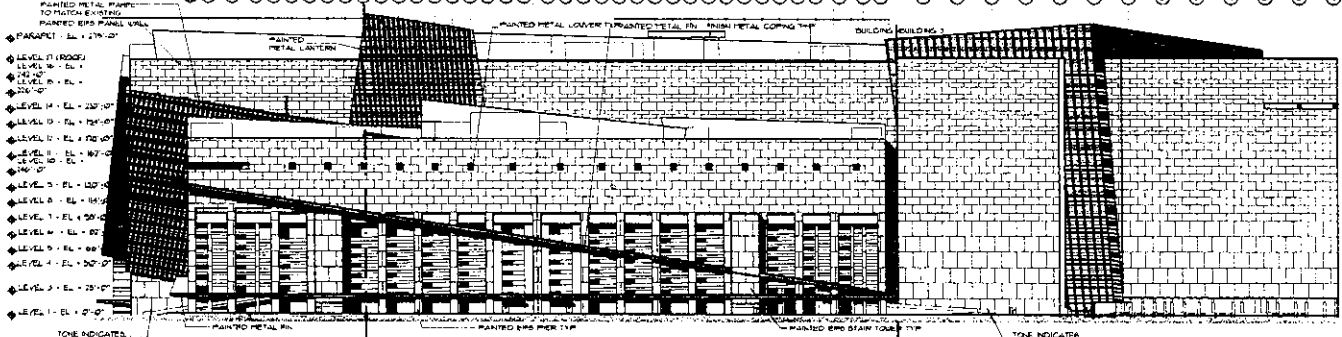
EXTERIOR ELEVATIONS

1 2 3 4 5 6 7 8 9 10 11 12 13 14 15 16 17 18 19 20 21 22 23 24



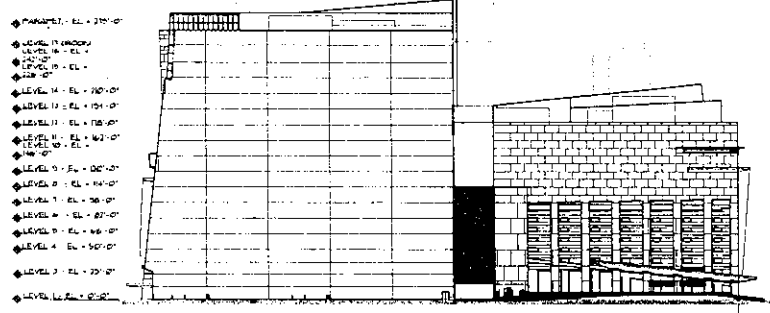
EXTERIOR ELEVATION - EAST
1" = 60'-0"

1 2 3 4 5 6 7 8 9 10 11 12 13 14 15 16 17 18 19 20 21 22 23 24



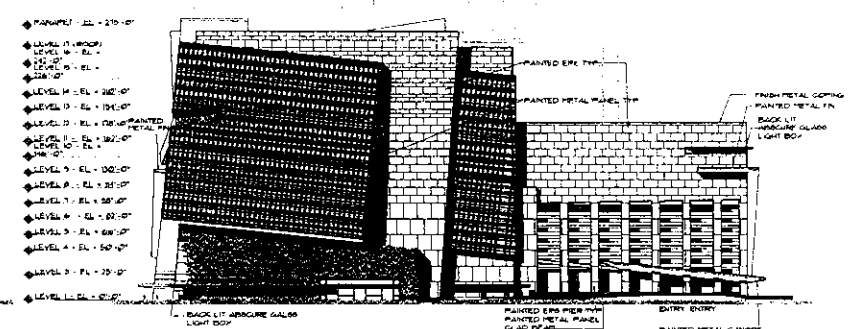
EXTERIOR ELEVATION - WEST
1" = 60'-0"

H L K J I H G F E D C B A P S R Q



EXTERIOR ELEVATION - NORTH
1" = 60'-0"

H L K J I H G F E D C B A P S R Q



EXTERIOR ELEVATION - SOUTH
1" = 60'-0"

SDR-23606
09/13/07 PC



ED VANCE AND ASSOCIATES
 900 PAVILION CENTER DRIVE SUITE 160
 LAS VEGAS, NEVADA, 89144
 P: 702.946.8115 F: 702.946.8116
 www.edvanceassociates.com

WORLD MARKET CENTER
 PHASE 4 - DESIGN REVIEW

JERDE

Architecture Urban Design
 Jon A. Jerde, FAIA

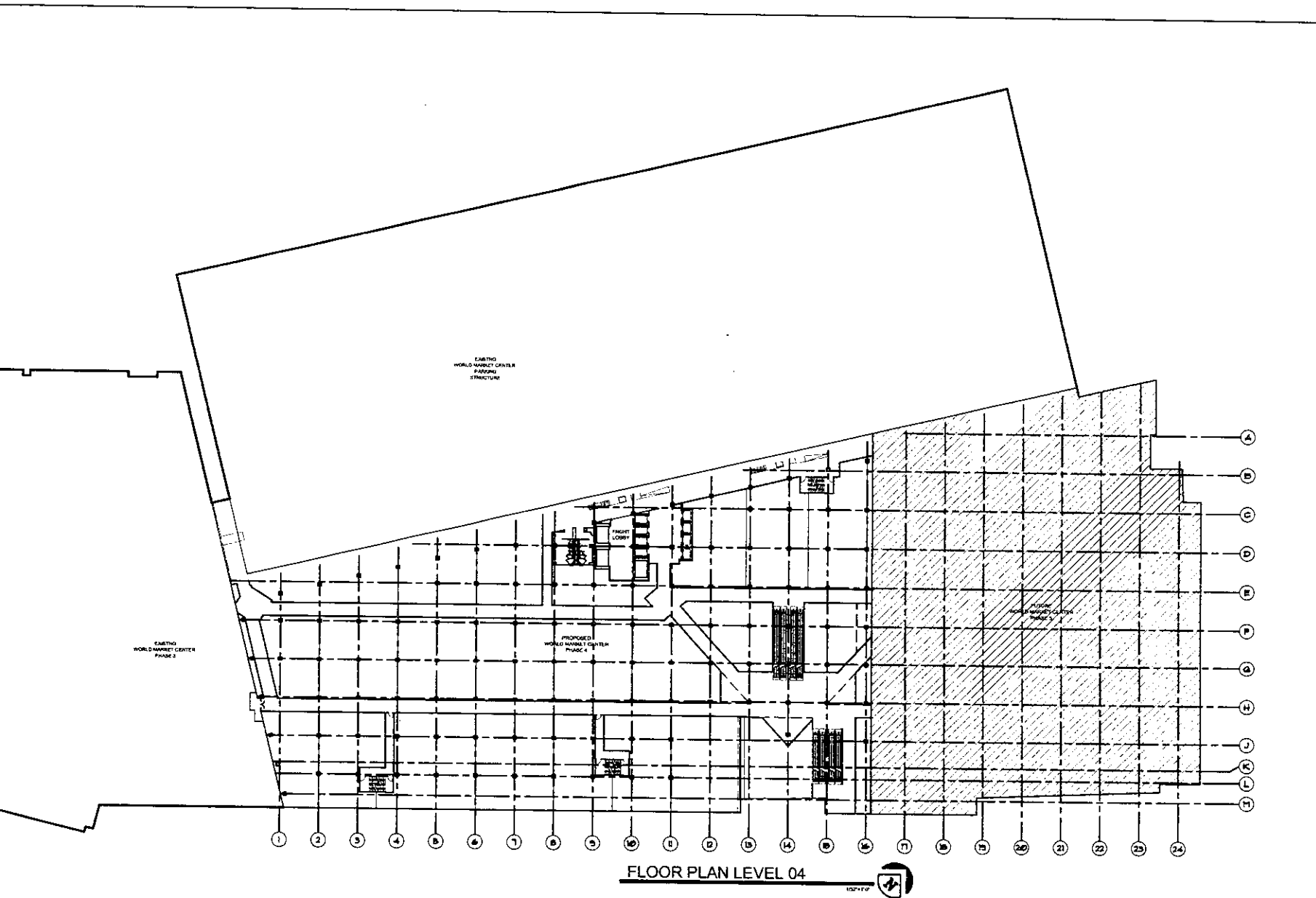
813 Ocean Front Walk
 Venice, California 90291
 (310) 388-1887

EDWARD A. VANCE
 Ed Vance & Associates
 900 S. Pavilion Center Dr. Ste. 160
 Las Vegas, Nevada 89144
 Phone: 702.946.8115
 Fax: 702.946.8116

EV&A Job Number:

Revision: _____ Initials: _____

BUILDING
 FLOOR
 PLANS
 A104



FLOOR PLAN LEVEL 04

SDR-23606
09/13/07 PC



ED VANCE AND ASSOCIATES
 100 PAVILION CENTER DRIVE SUITE 100
 LAS VEGAS, NEVADA 89144
 P. 702.946.8193 F. 702.946.8196
 www.edvanceassociates.com

WORLD MARKET CENTER
 PHASE 4 - DESIGN REVIEW



Architecture Urban Design
 Jon A. Jerde, F.A.I.A.

813 Ocean Front Walk
 Venice, California 90291
 (310) 396-1987

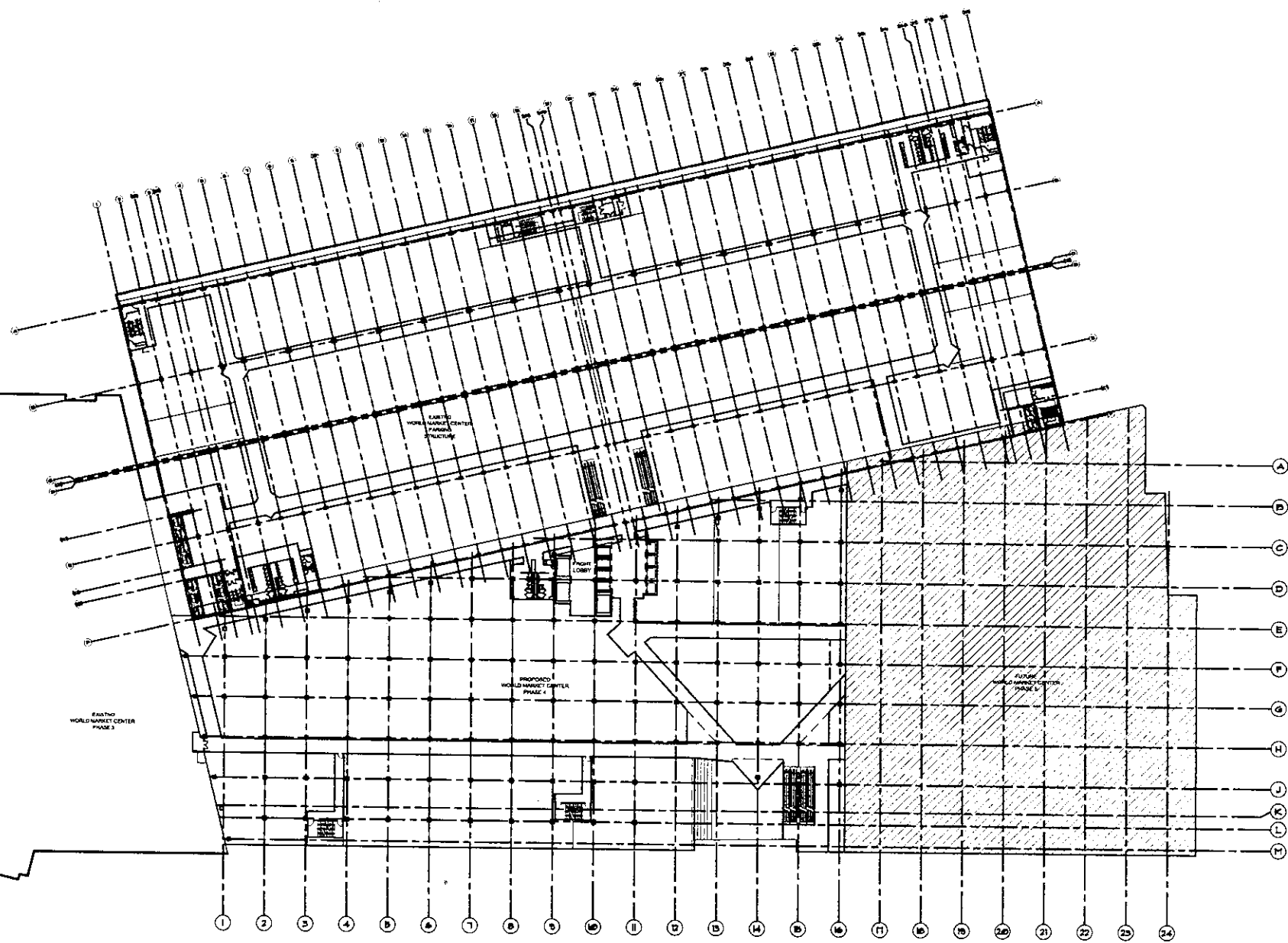
ED VANCE AND ASSOCIATES AND JERDE AND ASSOCIATES ARE NOT PROVIDING CONTRACT ADMINISTRATION SERVICES FOR THIS PROJECT. THE PROJECT IS THE PROPERTY OF THE CLIENT AND THE CONTRACT ADMINISTRATION SERVICES ARE THE RESPONSIBILITY OF THE CLIENT.

EDWARD A. VANCE
 Ed Vance & Associates
 900 S. Pavilion Center Dr. Ste. 100
 Las Vegas, Nevada 89144
 Phone 702.946.8915
 Fax 702.946.8918

EV&A Job Number:

Revision: _____ Issue Date: _____

BUILDING
 FLOOR
 PLANS
 ALOS



FLOOR PLAN LEVEL 08
SDR-23606
09/13/07 PC



ED VANCE AND ASSOCIATES
 900 PAVILION CENTER DRIVE, SUITE 180
 LAS VEGAS, NEVADA 89144
 P: 702.946.8193 F: 702.946.8194
 www.edvanceassociates.com

WORLD MARKET CENTER
 PHASE 4 - DESIGN REVIEW



Architecture Urban Design
 Jon A. Jerde, F.A.I.A.
 313 Ocean Front Walk
 Venice, California 90291
 (310) 396-1087

EDWARD A. VANCE
 Ed Vance & Associates
 900 S. Pavilion Center Dr. Ste. 180
 Las Vegas, Nevada 89144
 Phone 702.946.8193
 Fax 702.946.6615

EVA Job Number

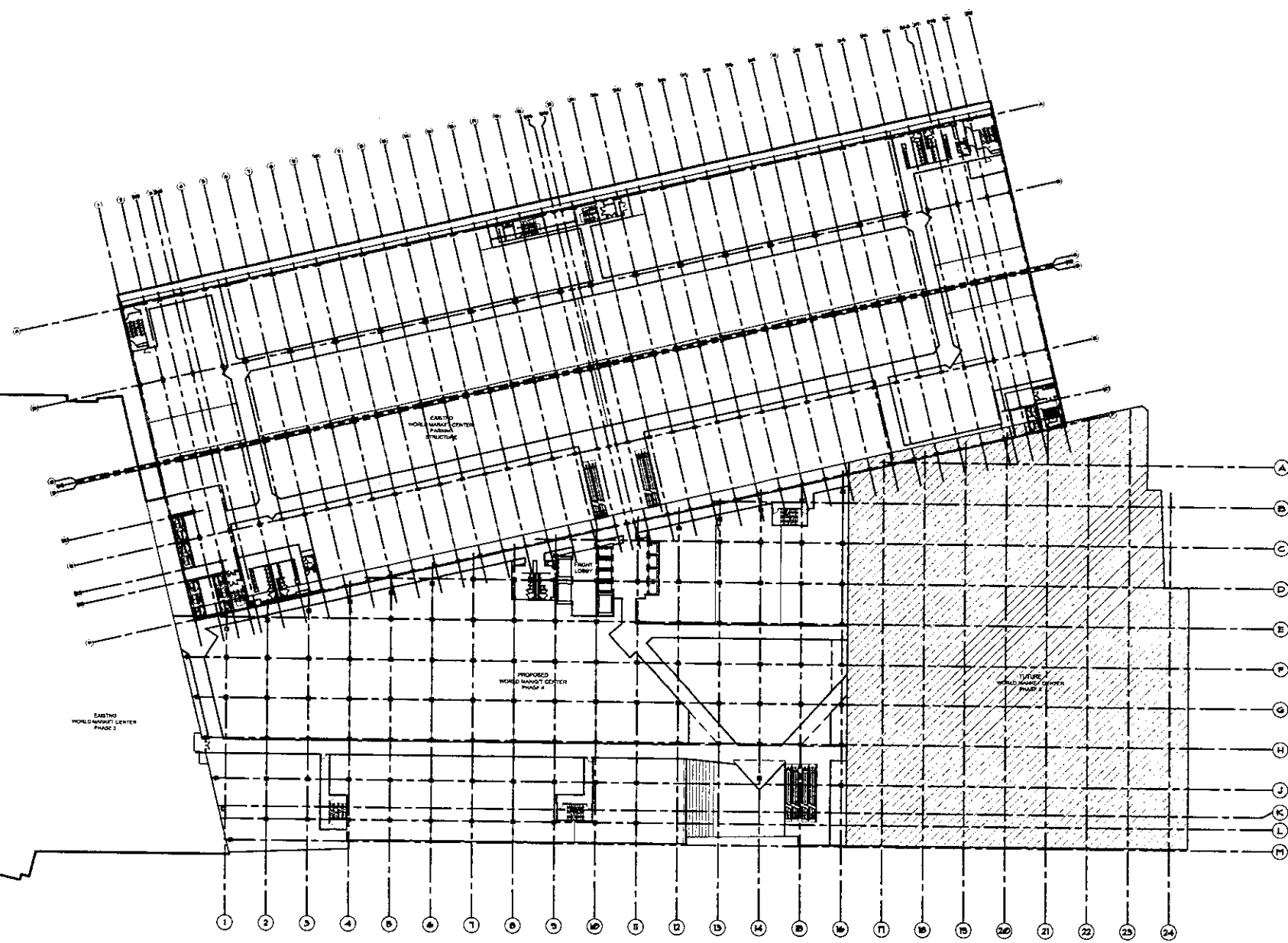
Revision: _____ Issue Date: _____

BUILDING
 FLOOR
 PLANS
 ALL

FLOOR PLAN LEVEL 11

SDR-23606

09/13/07 PC





ED VANCE AND ASSOCIATES
 900 PAVILION CENTER DRIVE SUITE 140
 LAS VEGAS, NEVADA 89144
 P. 702.946.8195 F. 702.946.8196
 www.edvanceassociates.com

WORLD MARKET CENTER
 PHASE 4 - DESIGN REVIEW

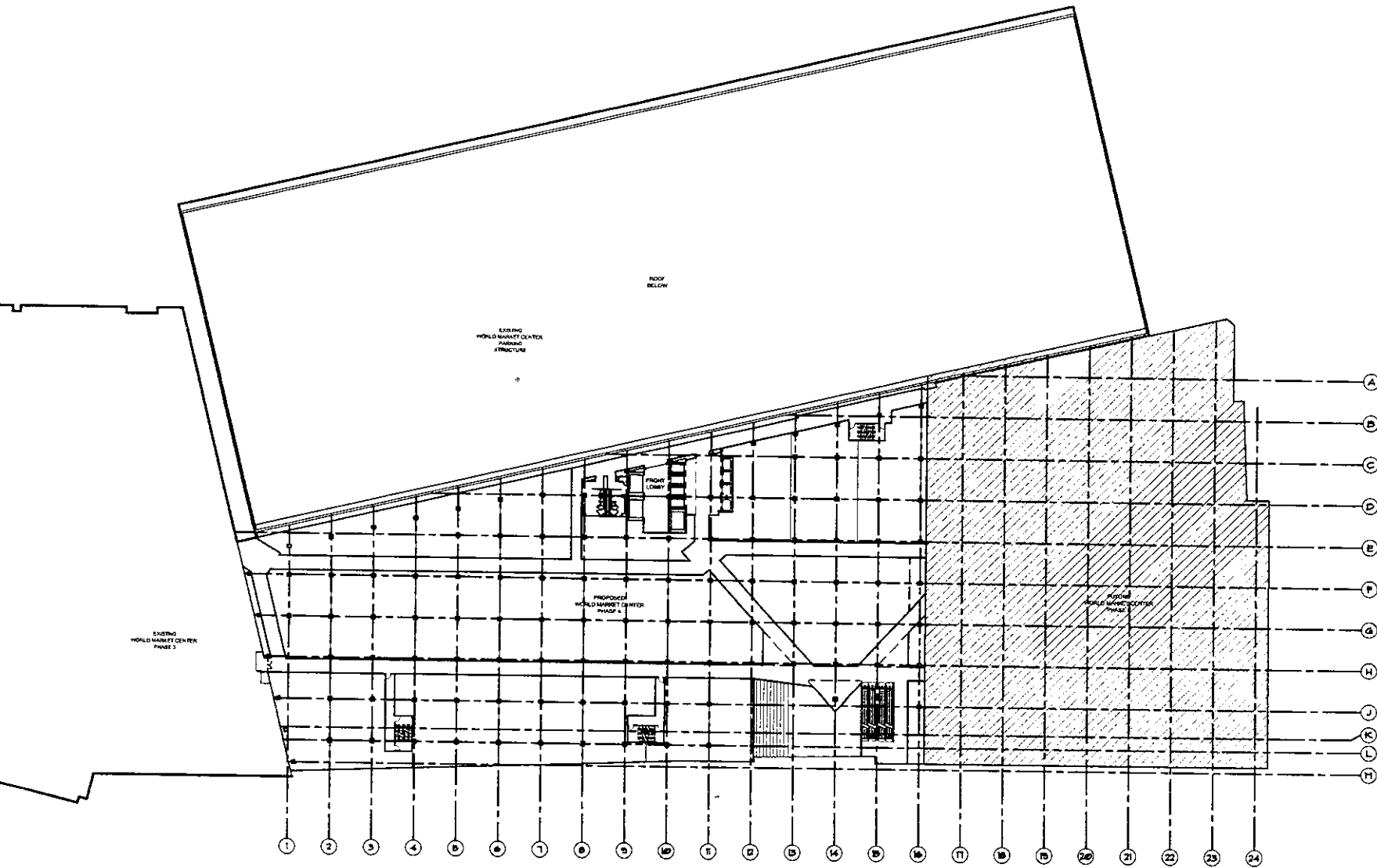
JERDE
 Architecture Urban Design
 Jon A. Jerde, F.A.I.A.
 913 Ocean Front Walk,
 Venice, California 90291
 (310) 399-1907

EDWARD A. VANCE
 Ed Vance & Associates
 900 S. Pavilion Center Dr. Ste. 160
 Las Vegas, Nevada 89144
 Phone 702.946.8915
 Fax 702.946.8916

EV&A Job Number:

Revision: _____ Issue Date: _____

BUILDING
 FLOOR
 PLANS
 ALL



FLOOR PLAN LEVEL 13



SDR-23606

09/13/07 PC

PLANNED

JERDE

Architecture Urban Design
Jon A. Jerde, F.A.I.A.

210 Ocean Front Walk
Venice, California 90291
(310) 306-1987

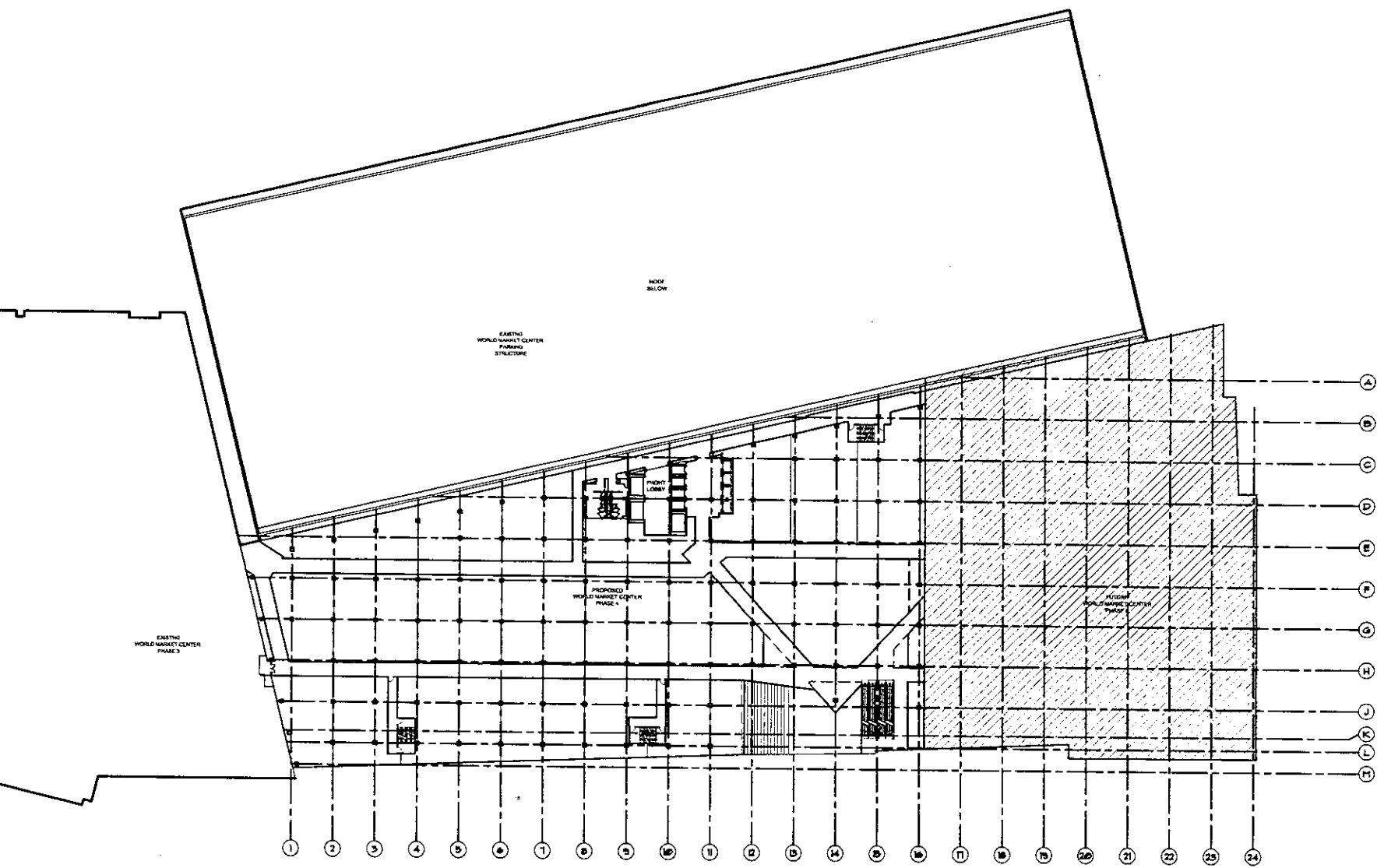
ED VANCE AND ASSOCIATES ARCHITECTS AND ASSOCIATES, INC. IS A REGISTERED PROFESSIONAL ARCHITECTURAL FIRM IN THE STATE OF NEVADA. THE ARCHITECTS ARE NOT PROVIDING ANY SERVICES IN ANY OTHER JURISDICTION. THE ARCHITECTS ARE NOT PROVIDING ANY SERVICES IN ANY OTHER JURISDICTION. THE ARCHITECTS ARE NOT PROVIDING ANY SERVICES IN ANY OTHER JURISDICTION.

EDWARD A. VANCE
Ed Vance & Associates
900 S. Pavilion Center Dr. Ste. 100
Las Vegas, Nevada 89144
Phone: 702.546.8145
Fax: 702.546.8115

EV&A Job Number:

Revision: _____ Issue Date: _____

BUILDING
FLOOR
PLANS
ALIG



FLOOR PLAN LEVEL 16

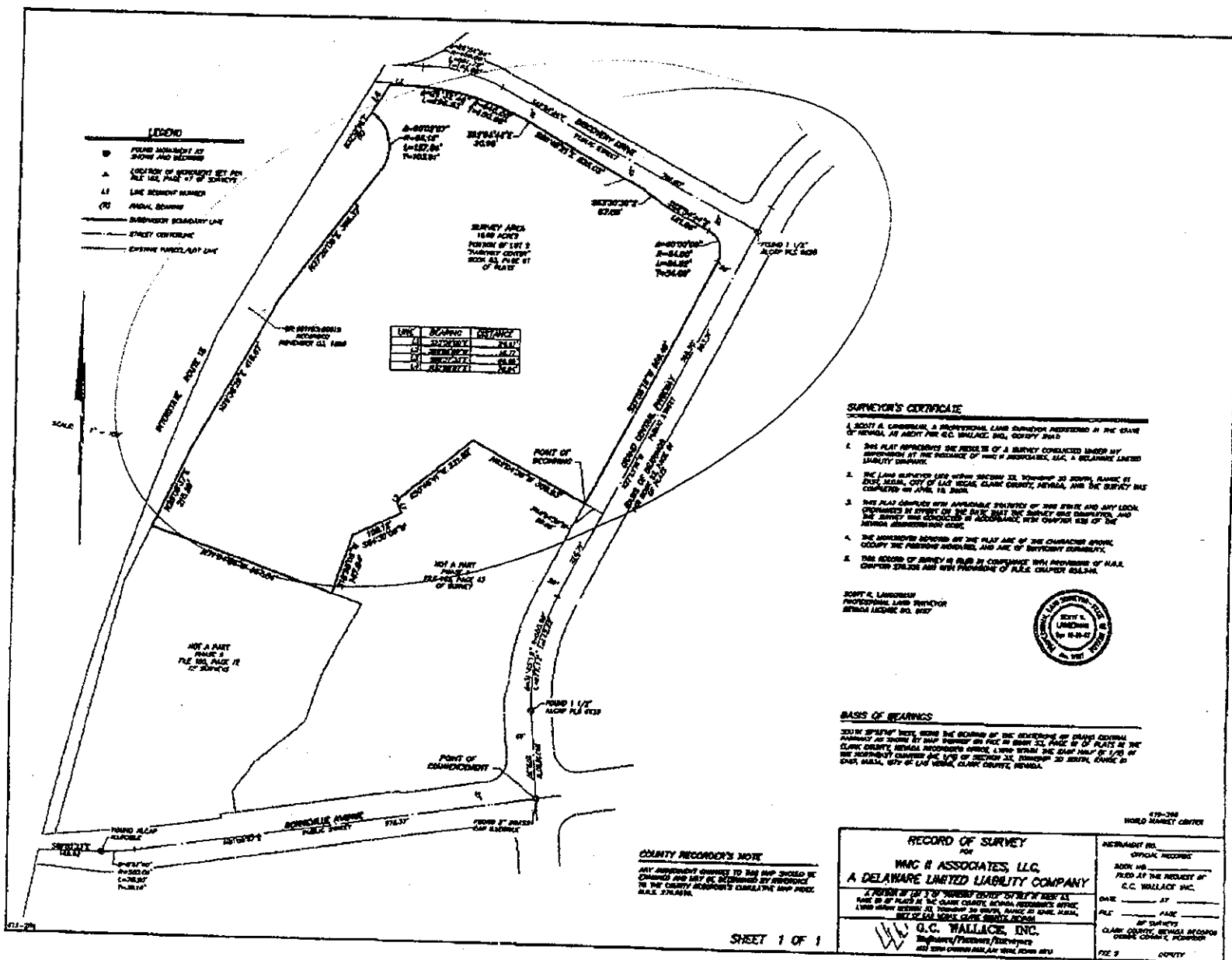
SDR-23606

09/13/07 PC

RECEIVED

Phase 4

Bldg sq ft 2,495,091



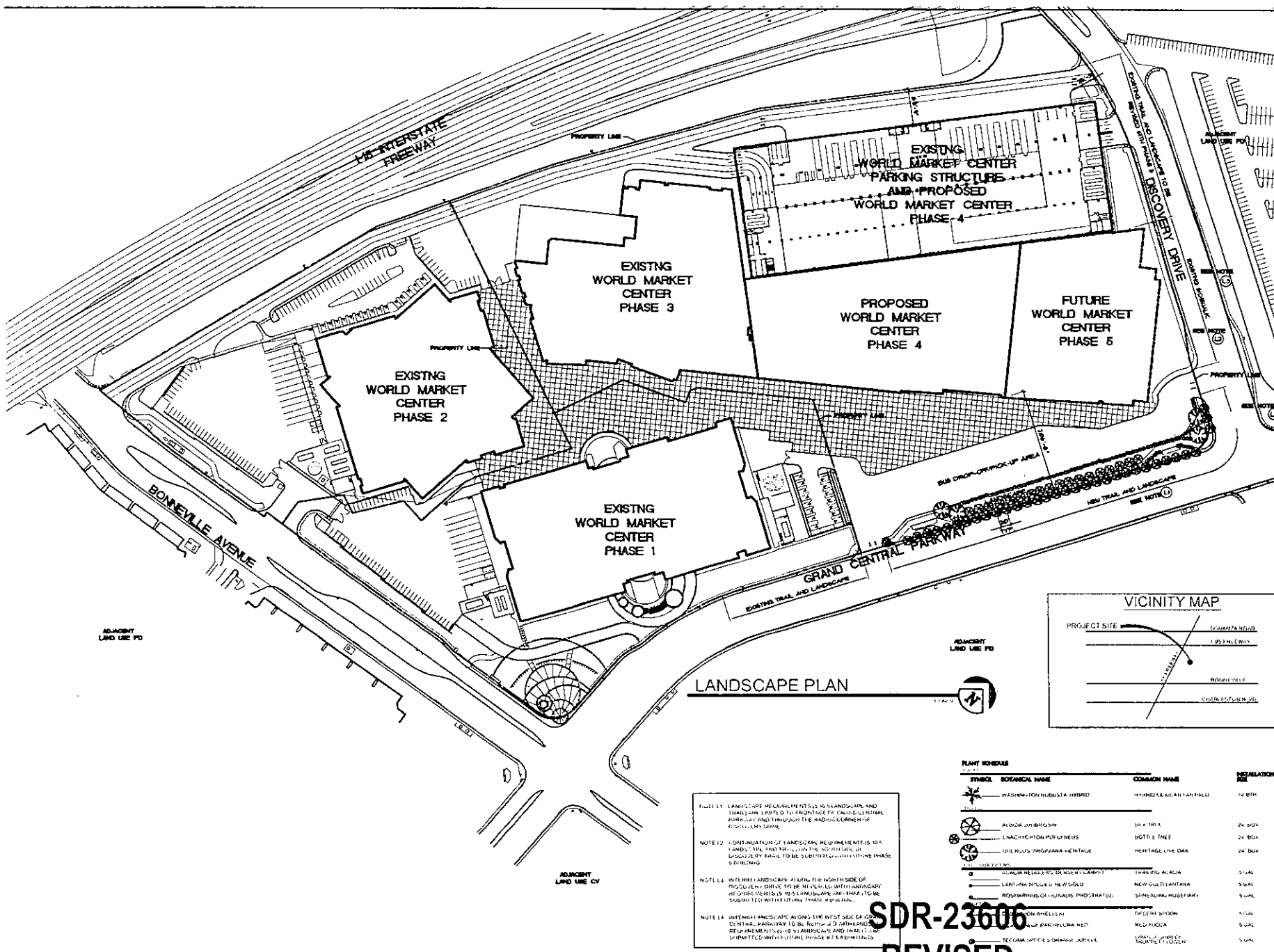
SHEET 1 OF 1

SDR-23606
 09/13/07 PC

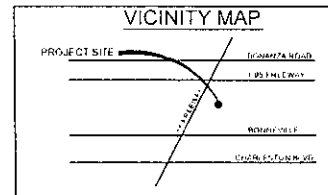
RECEIVED

ARCHITECTURAL
SITE PLAN

LI



LANDSCAPE PLAN



PLANT SCHEDULE

SYMBOL	BOTANICAL NAME	COMMON NAME	INSTALLATION
(Symbol)	WASHINGTONIA RUBRA x HYBRID	HYDRANGEA x AN FALLS	10 BTR
(Symbol)	ALBICHA JAPONICA	DAI x TREE	24 BDA
(Symbol)	ENACHTATION PURPUREUS	BOTTLE TREE	24 BDA
(Symbol)	LEUCODENDRON VIRENS	HERITAGE LIVE OAK	24 BDA
(Symbol)	ACACIA RELICATA	SHRUBBY ACACIA	5 YAL
(Symbol)	LEUCODENDRON VIRENS	NEW GULF LANTANA	5 YAL
(Symbol)	ROSEMARY	SEMPROPHERUS	5 YAL
(Symbol)	ONONHELLI	TRILEAF SYPHON	5 YAL
(Symbol)	LEUCODENDRON VIRENS	NEW GULF LANTANA	5 YAL
(Symbol)	LEUCODENDRON VIRENS	NEW GULF LANTANA	5 YAL

NOTE 1: LANDSCAPE MEASUREMENTS TO SURVEY AND EXISTING LANDSCAPE TO BE MAINTAINED TO REMAIN AS SHOWN IN THIS PLAN AND THROUGHOUT THE CONSTRUCTION PERIOD.

NOTE 2: CONTINUATION OF LANDSCAPE MEASUREMENTS TO SURVEY AND EXISTING LANDSCAPE TO BE MAINTAINED TO REMAIN AS SHOWN IN THIS PLAN AND THROUGHOUT THE CONSTRUCTION PERIOD.

NOTE 3: REFER TO LANDSCAPE PLAN FOR NORTH SIDE OF GRAND CENTRAL PARKWAY TO BE MAINTAINED TO REMAIN AS SHOWN IN THIS PLAN AND THROUGHOUT THE CONSTRUCTION PERIOD.

NOTE 4: REFER TO LANDSCAPE PLAN FOR WEST SIDE OF GRAND CENTRAL PARKWAY TO BE MAINTAINED TO REMAIN AS SHOWN IN THIS PLAN AND THROUGHOUT THE CONSTRUCTION PERIOD.

SDR-23606
REVISED
09/13/07 PC