



SUP-23485
09/13/07 PC



SUP-23485
09/13/07 PC



SUP-23485
09/13/07 PC

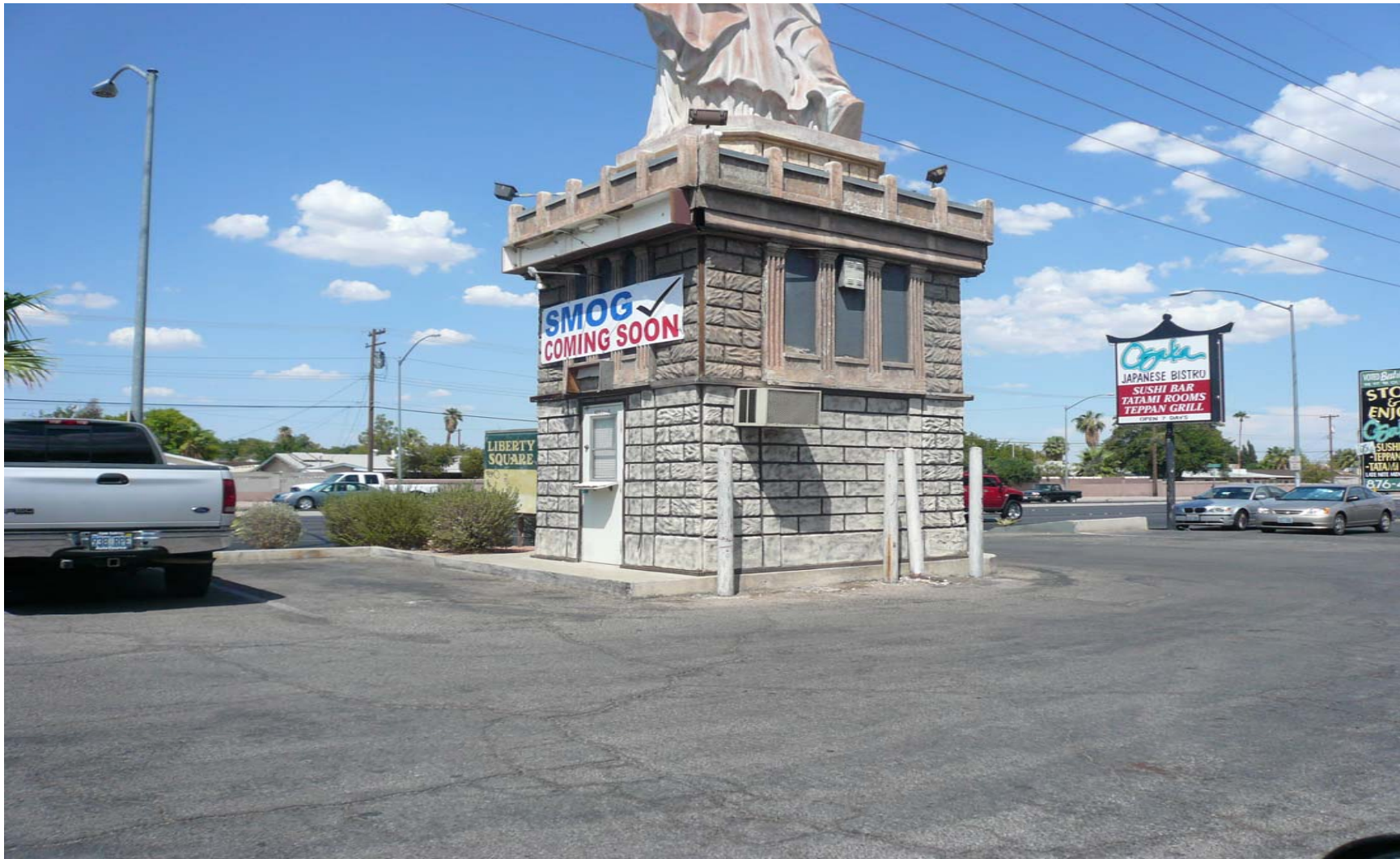


SUP-23485
09/13/07 PC



**SUP-23485 - APPLICANT: TORRE ROMERO - OWNER: BRIO'S PIZZERIA, LLC
4211 WEST SAHARA AVENUE, UNIT G
SEPTEMBER 13, 2007 PLANNING COMMISSION**

08/16/07



**SUP-23485 - APPLICANT: TORRE ROMERO - OWNER: BRIO'S PIZZERIA, LLC
4211 WEST SAHARA AVENUE, UNIT G
SEPTEMBER 13, 2007 PLANNING COMMISSION**

08/16/07