



DATE: June 18, 2007
 NADL COMP: 07031.00
 NADL RETAIL ARCHITECTS, LP
 225 CALLE DE LAS CALANCOAS, SUITE 100
 SAN JOSE, CALIFORNIA 95128
 TEL: 415.352.4624 FAX: 415.352.2176
 WWW.NADLARCH.COM



LOWE'S
 HOME IMPROVEMENT WAREHOUSE
 1500 Fremont Ave., Suite 140 Durham, NC 27704

REVISÉD EXTERIOR ELEVATIONS
 LOWE'S OF CENTENNIAL HILLS
 LAS VEGAS, NEVADA

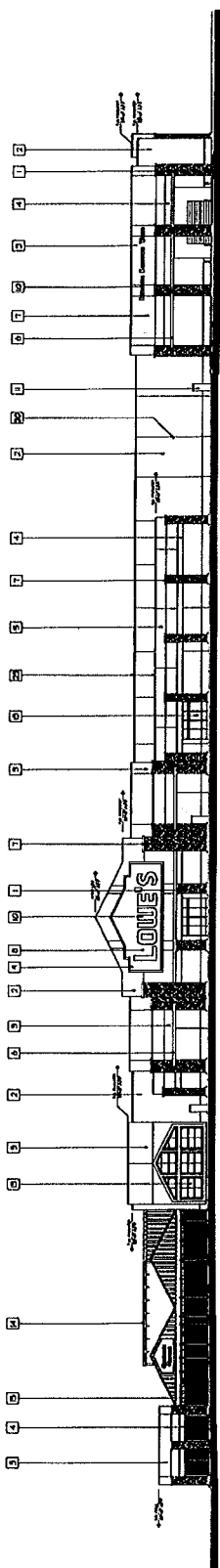


SDR-20496 07-11-07 CC

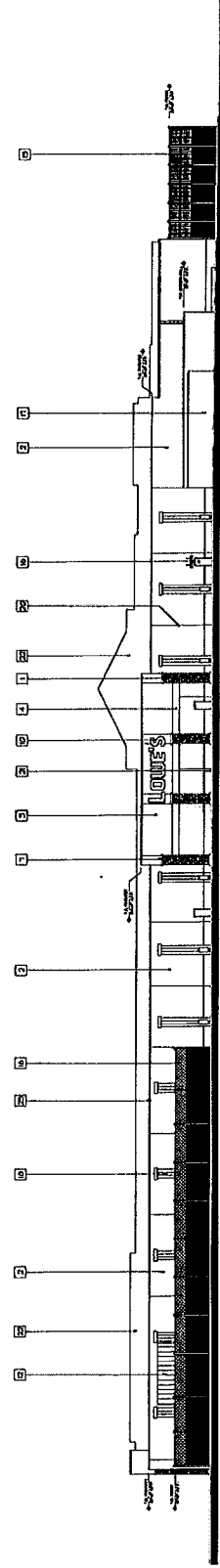
JUL 10 2007

Submitted after final agenda

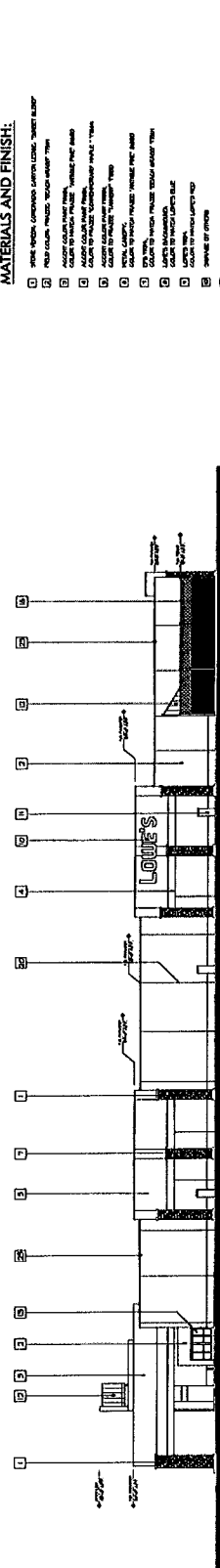
Date 7/11/07 Item #165



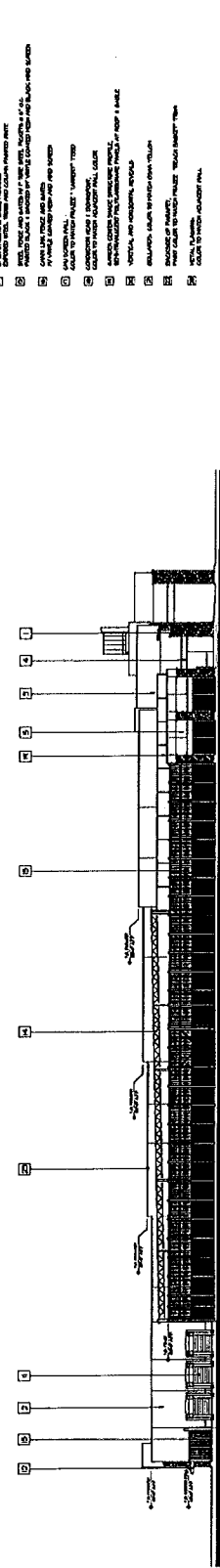
WEST ELEVATION



EAST ELEVATION



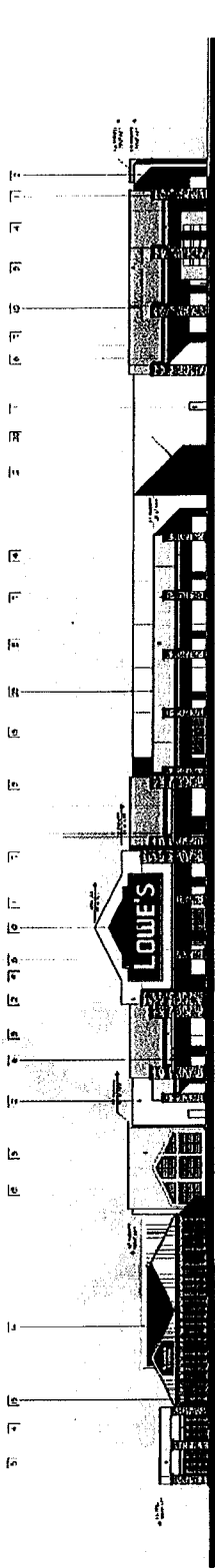
NORTH ELEVATION



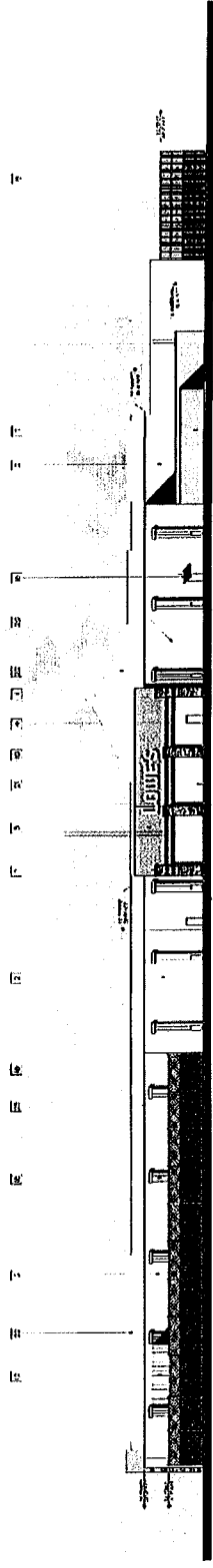
SOUTH ELEVATION

MATERIALS AND FINISH:

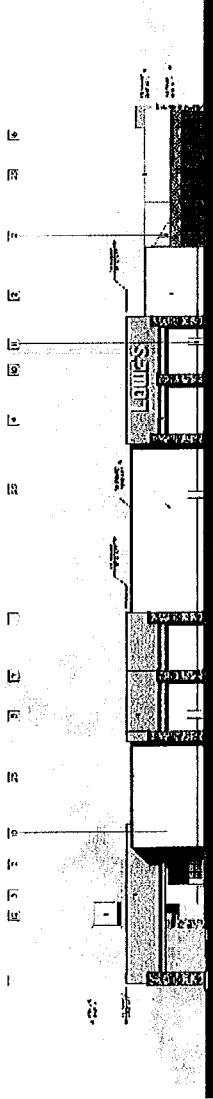
- 1. WOOD GRAIN LAMINATE VENEER (WOOD GRAIN)
- 2. WOOD GRAIN LAMINATE VENEER (WOOD GRAIN)
- 3. WOOD GRAIN LAMINATE VENEER (WOOD GRAIN)
- 4. WOOD GRAIN LAMINATE VENEER (WOOD GRAIN)
- 5. WOOD GRAIN LAMINATE VENEER (WOOD GRAIN)
- 6. WOOD GRAIN LAMINATE VENEER (WOOD GRAIN)
- 7. WOOD GRAIN LAMINATE VENEER (WOOD GRAIN)
- 8. WOOD GRAIN LAMINATE VENEER (WOOD GRAIN)
- 9. WOOD GRAIN LAMINATE VENEER (WOOD GRAIN)
- 10. WOOD GRAIN LAMINATE VENEER (WOOD GRAIN)
- 11. WOOD GRAIN LAMINATE VENEER (WOOD GRAIN)
- 12. WOOD GRAIN LAMINATE VENEER (WOOD GRAIN)
- 13. WOOD GRAIN LAMINATE VENEER (WOOD GRAIN)
- 14. WOOD GRAIN LAMINATE VENEER (WOOD GRAIN)
- 15. WOOD GRAIN LAMINATE VENEER (WOOD GRAIN)
- 16. WOOD GRAIN LAMINATE VENEER (WOOD GRAIN)
- 17. WOOD GRAIN LAMINATE VENEER (WOOD GRAIN)
- 18. WOOD GRAIN LAMINATE VENEER (WOOD GRAIN)
- 19. WOOD GRAIN LAMINATE VENEER (WOOD GRAIN)
- 20. WOOD GRAIN LAMINATE VENEER (WOOD GRAIN)
- 21. WOOD GRAIN LAMINATE VENEER (WOOD GRAIN)
- 22. WOOD GRAIN LAMINATE VENEER (WOOD GRAIN)
- 23. WOOD GRAIN LAMINATE VENEER (WOOD GRAIN)
- 24. WOOD GRAIN LAMINATE VENEER (WOOD GRAIN)



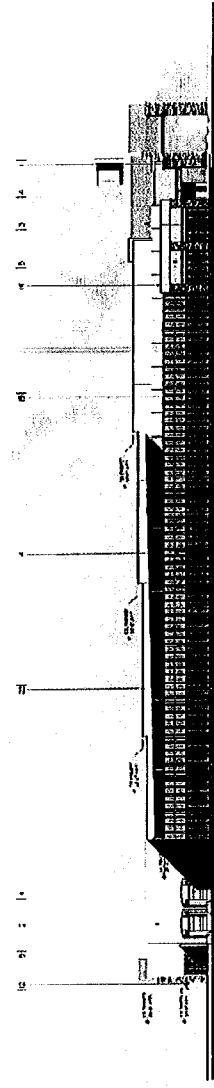
WEST ELEVATION



EAST ELEVATION



NORTH ELEVATION



SOUTH ELEVATION

MATERIALS AND FINISH:

- 1. 1/2" x 1/2" x 1/2" POLISHED CONCRETE
- 2. 1/2" x 1/2" x 1/2" POLISHED CONCRETE
- 3. 1/2" x 1/2" x 1/2" POLISHED CONCRETE
- 4. 1/2" x 1/2" x 1/2" POLISHED CONCRETE
- 5. 1/2" x 1/2" x 1/2" POLISHED CONCRETE
- 6. 1/2" x 1/2" x 1/2" POLISHED CONCRETE
- 7. 1/2" x 1/2" x 1/2" POLISHED CONCRETE
- 8. 1/2" x 1/2" x 1/2" POLISHED CONCRETE
- 9. 1/2" x 1/2" x 1/2" POLISHED CONCRETE
- 10. 1/2" x 1/2" x 1/2" POLISHED CONCRETE
- 11. 1/2" x 1/2" x 1/2" POLISHED CONCRETE
- 12. 1/2" x 1/2" x 1/2" POLISHED CONCRETE
- 13. 1/2" x 1/2" x 1/2" POLISHED CONCRETE
- 14. 1/2" x 1/2" x 1/2" POLISHED CONCRETE
- 15. 1/2" x 1/2" x 1/2" POLISHED CONCRETE
- 16. 1/2" x 1/2" x 1/2" POLISHED CONCRETE
- 17. 1/2" x 1/2" x 1/2" POLISHED CONCRETE
- 18. 1/2" x 1/2" x 1/2" POLISHED CONCRETE
- 19. 1/2" x 1/2" x 1/2" POLISHED CONCRETE
- 20. 1/2" x 1/2" x 1/2" POLISHED CONCRETE
- 21. 1/2" x 1/2" x 1/2" POLISHED CONCRETE
- 22. 1/2" x 1/2" x 1/2" POLISHED CONCRETE
- 23. 1/2" x 1/2" x 1/2" POLISHED CONCRETE
- 24. 1/2" x 1/2" x 1/2" POLISHED CONCRETE
- 25. 1/2" x 1/2" x 1/2" POLISHED CONCRETE
- 26. 1/2" x 1/2" x 1/2" POLISHED CONCRETE
- 27. 1/2" x 1/2" x 1/2" POLISHED CONCRETE
- 28. 1/2" x 1/2" x 1/2" POLISHED CONCRETE
- 29. 1/2" x 1/2" x 1/2" POLISHED CONCRETE
- 30. 1/2" x 1/2" x 1/2" POLISHED CONCRETE
- 31. 1/2" x 1/2" x 1/2" POLISHED CONCRETE
- 32. 1/2" x 1/2" x 1/2" POLISHED CONCRETE
- 33. 1/2" x 1/2" x 1/2" POLISHED CONCRETE
- 34. 1/2" x 1/2" x 1/2" POLISHED CONCRETE
- 35. 1/2" x 1/2" x 1/2" POLISHED CONCRETE
- 36. 1/2" x 1/2" x 1/2" POLISHED CONCRETE
- 37. 1/2" x 1/2" x 1/2" POLISHED CONCRETE
- 38. 1/2" x 1/2" x 1/2" POLISHED CONCRETE
- 39. 1/2" x 1/2" x 1/2" POLISHED CONCRETE
- 40. 1/2" x 1/2" x 1/2" POLISHED CONCRETE
- 41. 1/2" x 1/2" x 1/2" POLISHED CONCRETE
- 42. 1/2" x 1/2" x 1/2" POLISHED CONCRETE
- 43. 1/2" x 1/2" x 1/2" POLISHED CONCRETE
- 44. 1/2" x 1/2" x 1/2" POLISHED CONCRETE
- 45. 1/2" x 1/2" x 1/2" POLISHED CONCRETE
- 46. 1/2" x 1/2" x 1/2" POLISHED CONCRETE
- 47. 1/2" x 1/2" x 1/2" POLISHED CONCRETE
- 48. 1/2" x 1/2" x 1/2" POLISHED CONCRETE
- 49. 1/2" x 1/2" x 1/2" POLISHED CONCRETE
- 50. 1/2" x 1/2" x 1/2" POLISHED CONCRETE



20
REVISED EXTERIOR ELEVATIONS
LOWE'S OF CENTENNIAL HILLS
LAS VEGAS, NEVADA



JUL 10 2007

DATE: June 19, 2007
 PROJ. NO.: 070310

1000 EAST CENTENNIAL HILLS BLVD
 LAS VEGAS, NV 89119
 702.734.1000
 WWW.LOWES.COM

NADEL
 RETAIL

SDR-20496 07-11-07 CC