

CASE: GPA-20474

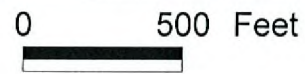
RADIUS: 1500 FT

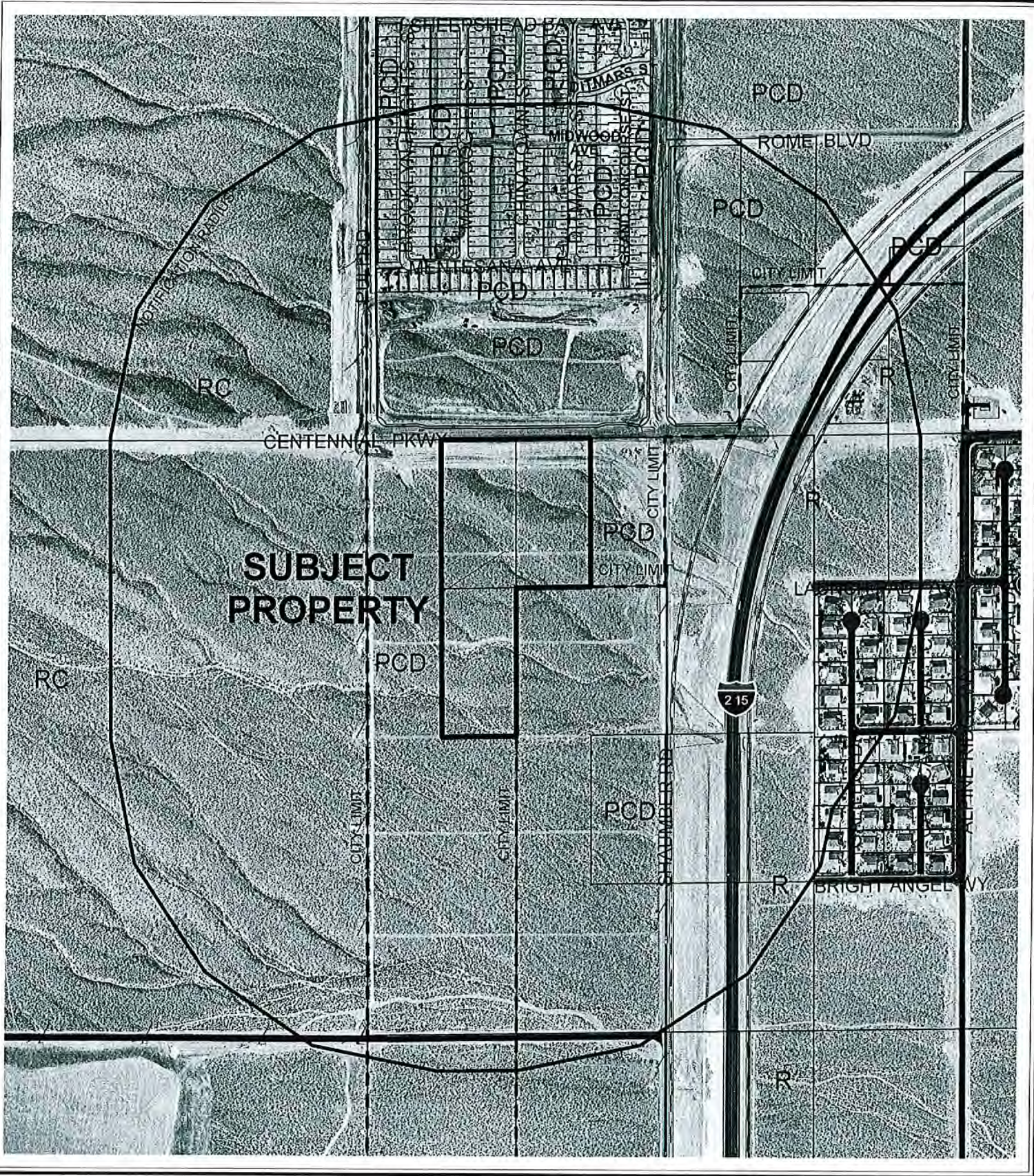
GENERAL LAND USE OF SUBJECT PROPERTY:

PCD (PLANNED COMMERCIAL DEVELOPMENT)

PROPOSED GENERAL LAND USE OF SUBJECT PROPERTY:

R-4 (HIGH DENSITY RESIDENTIAL)





CASE: GPA-20474

RADIUS: 1500 FT

GENERAL LAND USE OF SUBJECT PROPERTY:
PCD (PLANNED COMMERCIAL DEVELOPMENT)

PROPOSED GENERAL LAND USE OF SUBJECT PROPERTY:
R-4 (HIGH DENSITY RESIDENTIAL)

