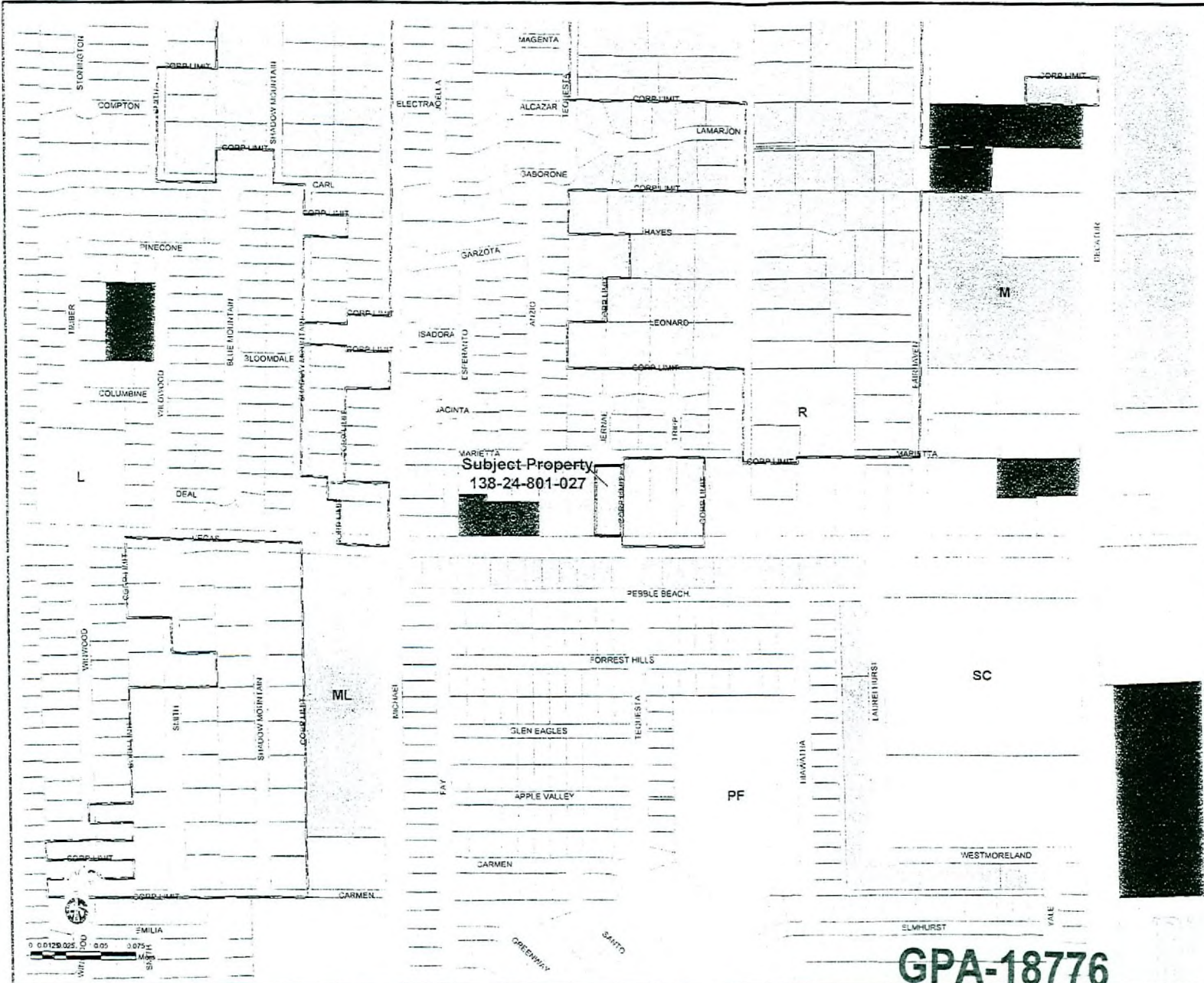


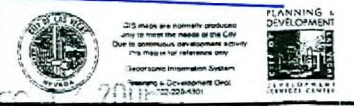
City of Las Vegas
FUTURE LAND USE
 138-24-801-027

- Rural Neighborhood Preservation - up to 2 du/ac (0 to 2 du/ac)
- Desert Rural - up to 2.49 du/ac (2.1 to 2.49 du/ac)
- Rural - up to 3.59 du/ac (2.5 to 3.59 du/ac)
- Low - 3.6 to 6.5 du/ac
- Medium - Low - 6.6 to 8 du/ac
- Medium - Low Attached - 8.1 to 12 du/ac
- Medium - 12.1 to 25 du/ac
- High - 25+ du/ac
- Mixed Use (L,ML,M,H,O,SC,CC,PF)
- Office
- Service Commercial
- General Commercial
- General Tourist Commercial
- Commercial (O,SC,GC)
- Park/Recreation/Open Space
- Park / Recreation / Open Space
- Public Facility
- Public Facility School
- Public Facilities Clark County
- Resource Conservation
- Light Industrial / Research
- Planned Community Development
- Town Center
- University Medical Center
- Traditional Neighborhood Development



RECEIVED
 DEC 14 2006

Plotted: December 11, 2005



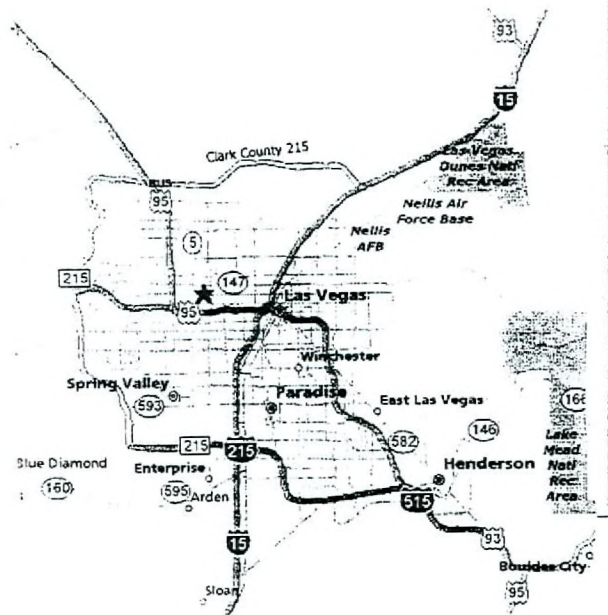
GPA-18776
04/12/07 PC

MARIETTA AVENUE

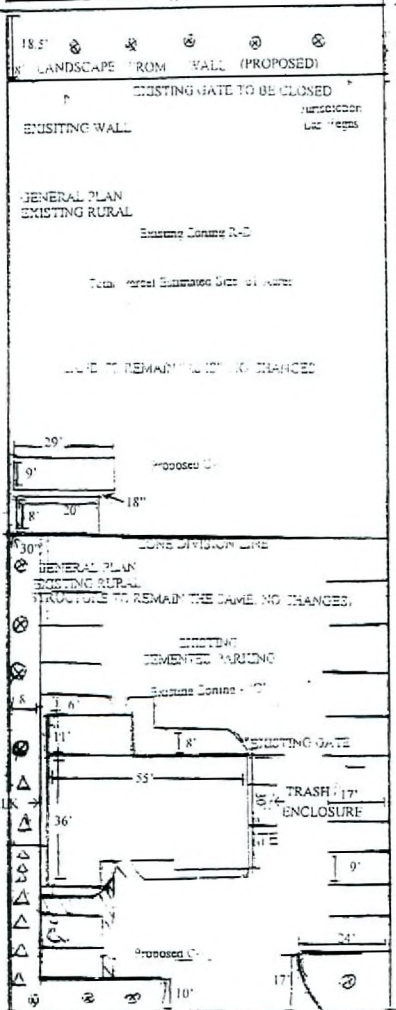
GENERAL PLAN
EXISTING RURAL

UNDESIGNATED
LAND USE

Institutional Use

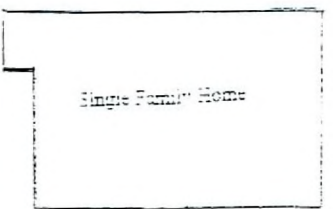


ACCESSORY
STRUCTURES
TO REMAIN



GENERAL PLAN
EXISTING RURAL

SITE INFORMATION	
Lot Area - res	2.14 acres
Site Area	1.84 acres
Lot Coverage	1.30%
Parking required	1300 sq ft
Parking Provided	141
IRC required	141
IRC provided	141
Set Backs:	
Front	25'
Rear	100'
Side west	25'
Side east	15'
Lot Coverage	
1.5-2.0	1.30%
549	26.7' x 160' = 1.30%



RECEIVED
MAR 28 2007

VEGAS DRIVE



GPA-18776 ZON-18773
SUP-18774 SDR-19330
REVISED 04/12/07 PC

NORTH

SITE PLAN LANDSCAPE 2 Same Size
 COUNTY CLARK
 ADDRESS 1700 VEGAS DRIVE LAS VEGAS NV 89102
 PARCEL NUMBER 187-001-007
 CASE NO. 2007-001-007