

PRELIMINARY FLOOR PLAN/ELEVATIONS Typical Pad

PROJECT NUMBER: 01118

Decatur/Centennial Plaza

1" = 1/4" (THIS SHEET IS 11" X 21")

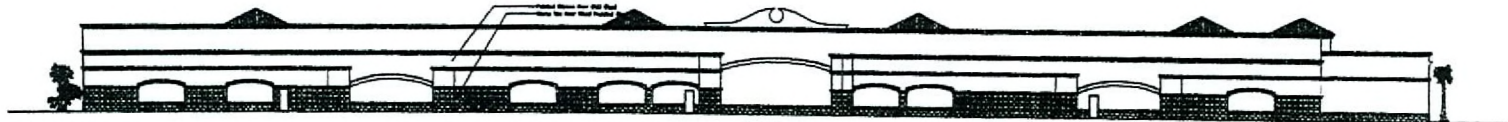


Erwin, Architect, Inc. is a Professional Corporation. All drawings are preliminary and intended to provide a general impression of the proposed project. They are not to be used for construction or any other purpose without the written consent of the architect. The architect shall not be responsible for the accuracy of the drawings or for any errors or omissions thereon.

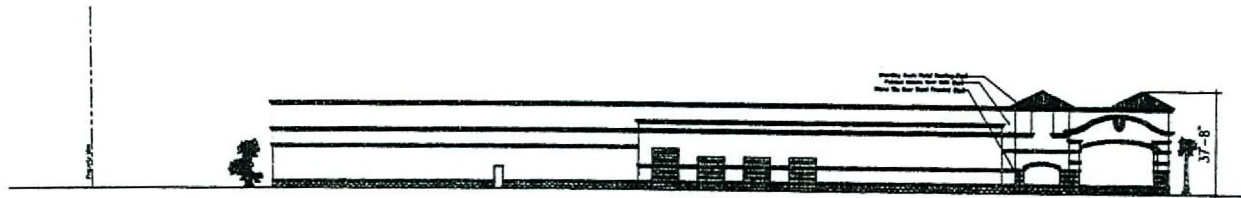
EOT-20772
05-16-07 CC



East Elevation



West Elevation



South Elevation



North Elevation

PRELIMINARY ELEVATION Major A

PROJECT NUMBER: 0000

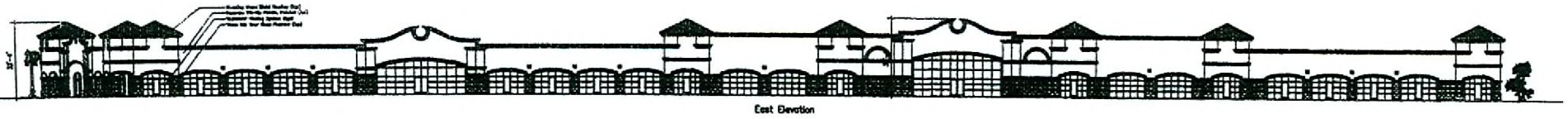
Working Submittal for South American Capital

1" = 32'



EOT ARCHITECTURE, INC.
100 East Park Street, Suite 200
Cary, NC 27513

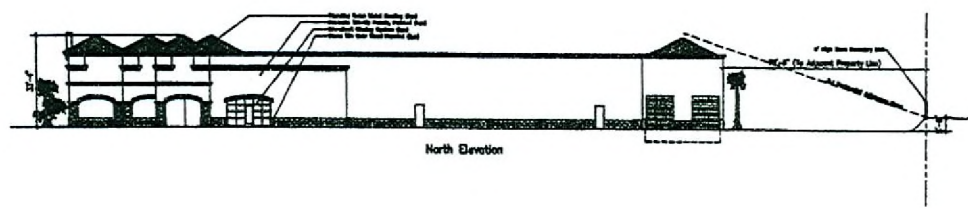
EOT-20772
05-16-07 CC



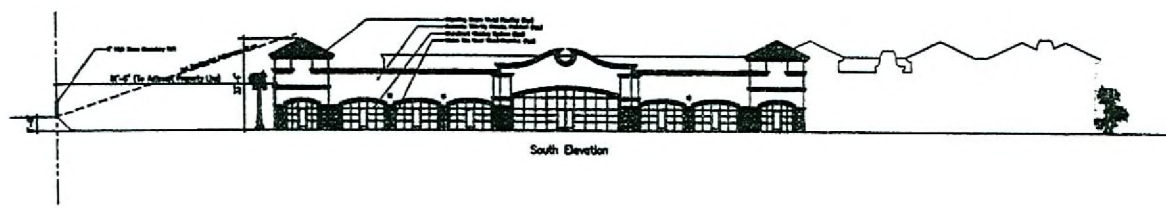
East Elevation



West Elevation



North Elevation



South Elevation

PRELIMINARY ELEVATION Main Retail Building

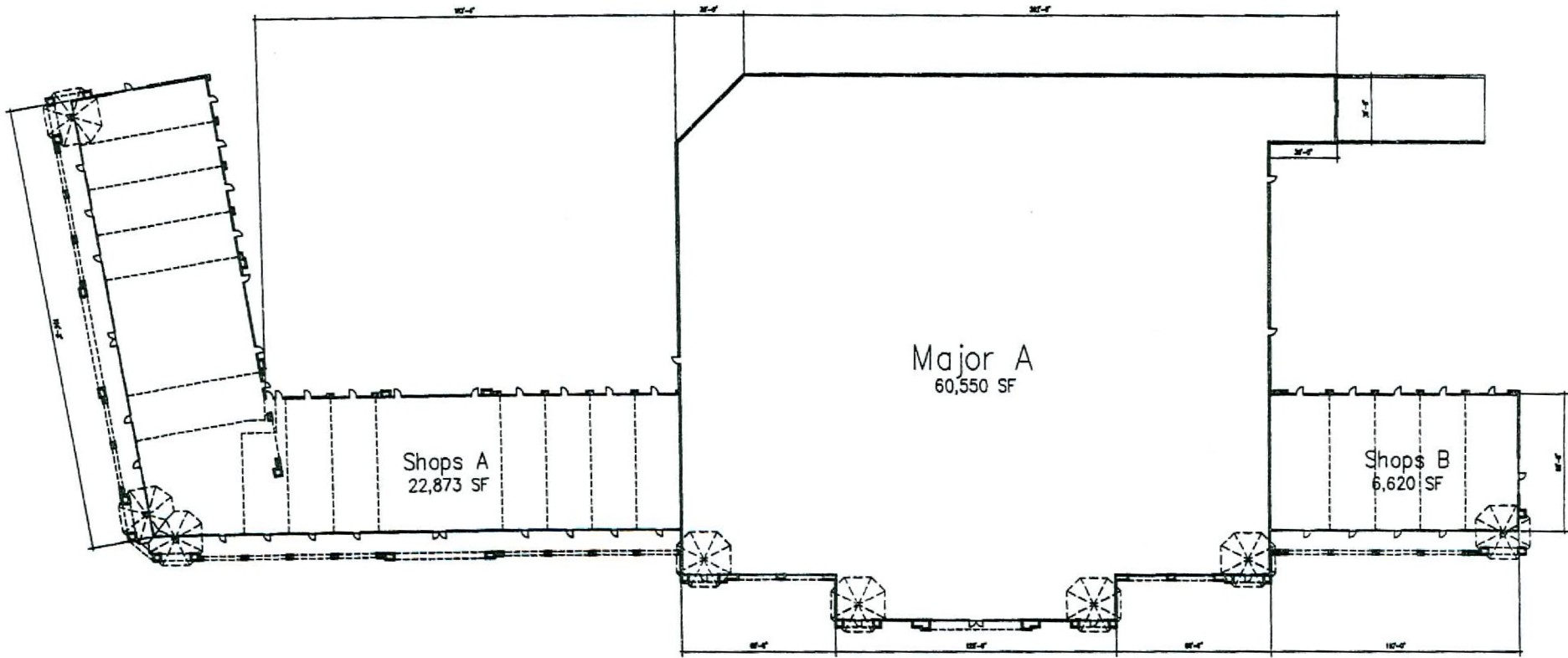
PROJECT NUMBER: 1000

Revised/Consulted Plan

17-10



EOT-20772
05-16-07 CC



PRELIMINARY FLOOR PLAN Main Retail 90,043 SF

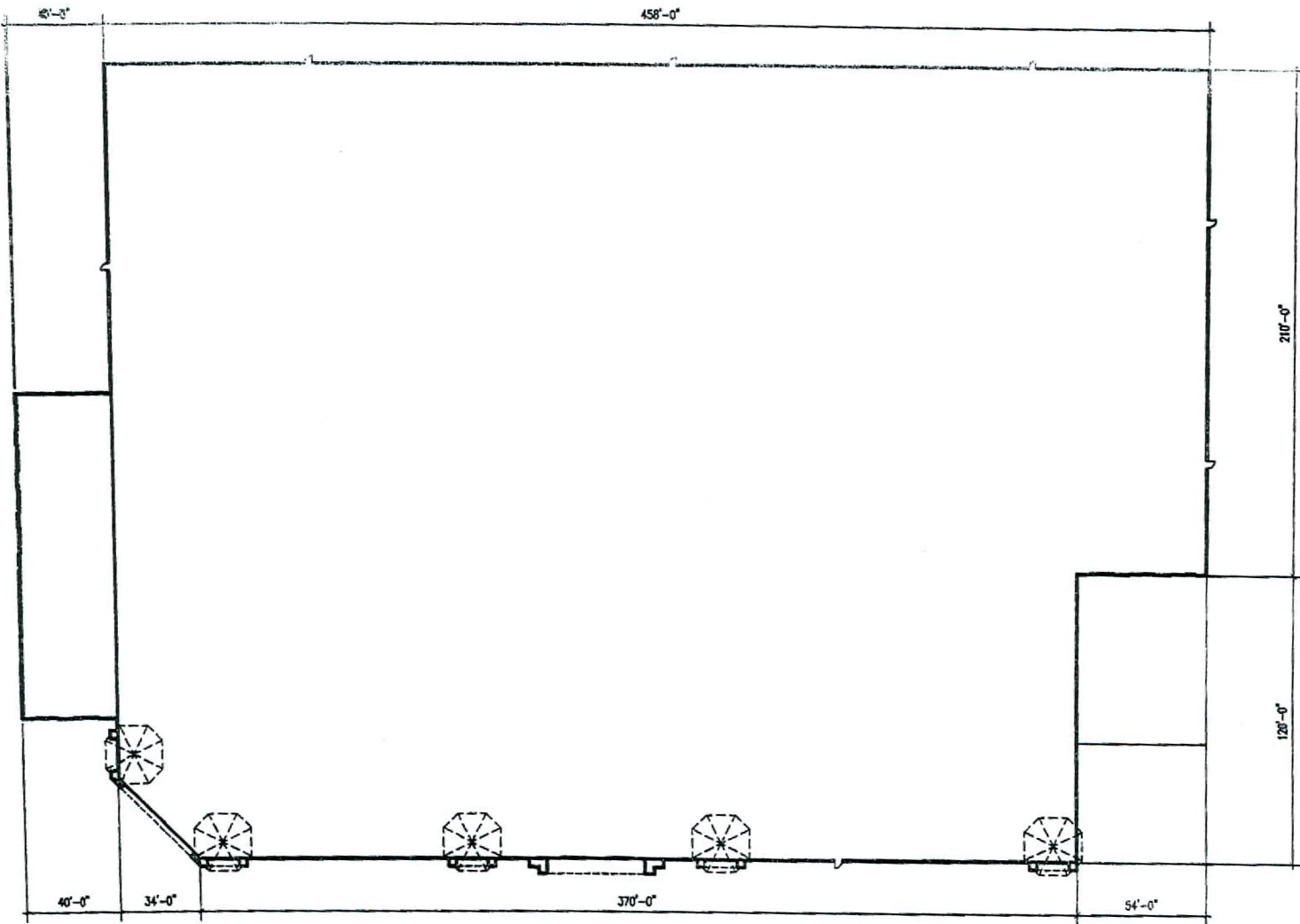
Decorat/Centennial Plaza



JACOBI & JACOBI, ARCHITECTS, INC.
4020 South Shoreline, Suite 1, Los Vegas, Nevada 89121
(702) 432-4400

EOT-20772
05-16-07 CC

PROJECT NUMBER: 0018
DATE: 05-16-07
DRAWN BY: [illegible]
CHECKED BY: [illegible]
SCALE: 1/8" = 1'-0"



PRELIMINARY FLOOR PLAN Major A 141,442 SF

PROJECT NUMBER: 0726

1" = 30'



Decatur/Centennial Plaza



ARCADIS, INC. ARCHITECTS, INC.
 6420 South Shiloh, Suite 1, Las Vegas, Nevada 89122
 (702) 424-1400

EOT-20772
05-16-07 CC

THIS DOCUMENT IS THE PROPERTY OF THE ARCHITECTURAL FIRM AND IS NOT TO BE REPRODUCED OR TRANSMITTED IN ANY FORM OR BY ANY MEANS, ELECTRONIC OR MECHANICAL, INCLUDING PHOTOCOPYING, RECORDING, OR BY ANY INFORMATION STORAGE AND RETRIEVAL SYSTEM, WITHOUT THE WRITTEN PERMISSION OF THE ARCHITECTURAL FIRM.