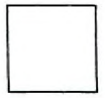


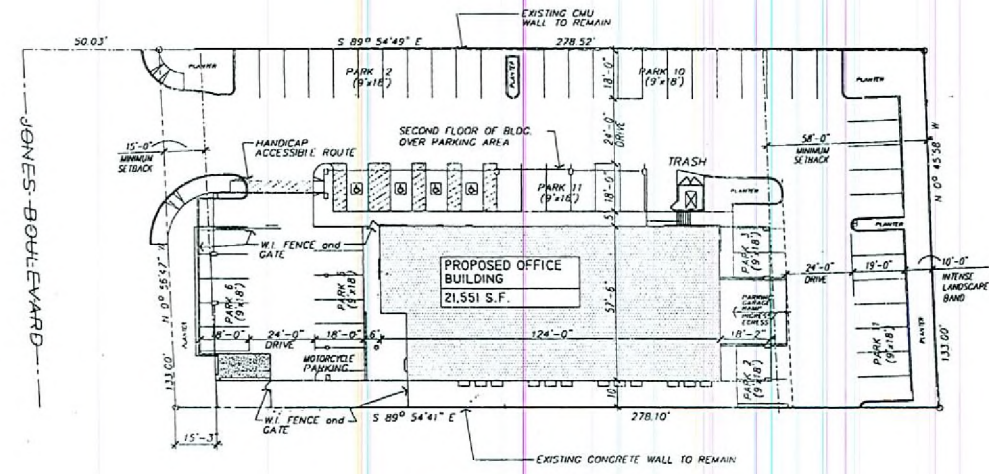


SITE DATA	
LOT AREA GROSS TOTAL:	43,644 S.F.
RIGHT-OF-WAY AREA:	8,650 S.F.
EXISTING ZONING:	R-E
PROPOSED ZONING:	C-P
DESCRIPTION	AREA
PROPOSED OFFICE BUILDING:	21,551 S.F. TOTAL
BASEMENT PARKING GARAGE:	11,732 S.F. TOTAL

PARKING REQUIRED	
OFFICE:	21,551 S.F. @ 4/1000 = 89 SPACES
TOTAL PARKING REQUIRED: (4 HANDICAPPED SPACES):	89 SPACES
TOTAL PARKING PROVIDED: 60 SPACES ABOVE GROUND (INCLUDES 4 HANDICAPPED SPACES) 30 SPACES BASEMENT GARAGE:	90 SPACES



EXISTING C-1 ZONING



EXISTING C-P ZONING

EXISTING RE ZONING

PROPOSED OFFICE BUILDING  
A.P.N. #153-01-201-006  
1506 S. JONES BLVD.  
FOR: MFA REALTY & ASSOC.  
LAS VEGAS, NEVADA



2 LOCATION MAP  
NOT TO SCALE

1 SITE PLAN  
SCALE: 1/16" = 1'-0"

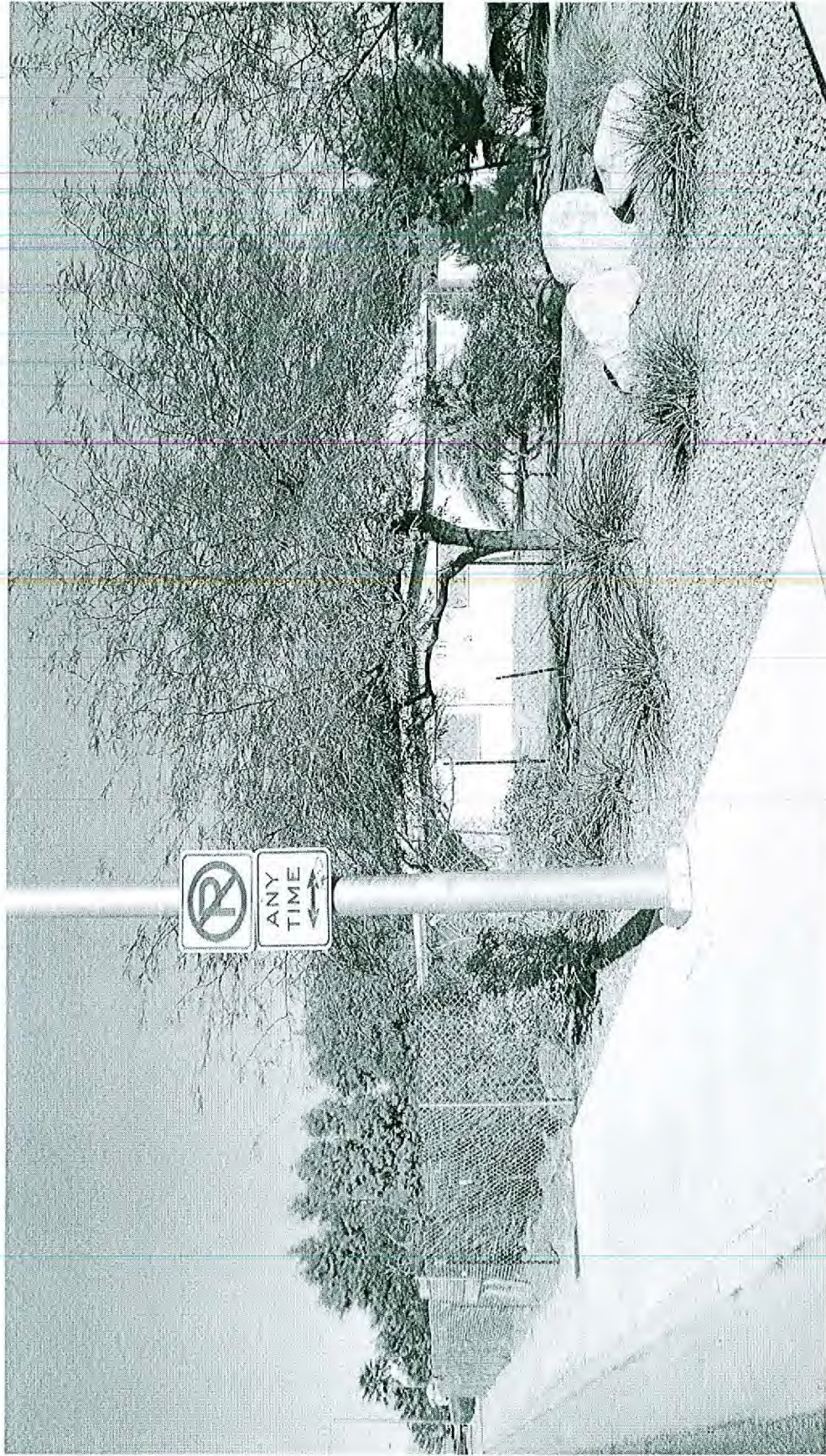
Date: 09-8-05

PROJECT NUMBER: 200510

A-1.1

ZON-18972  
VAR-18973  
02/08/07 PC

RECEIVED  
DEC 8 2006



ZON-18972 AND VAR-18973 - APPLICANT/OWNER: MAX JONES PROFESSIONAL PLAZA  
1506 SOUTH JONES BOULEVARD  
FEBRUARY 8, 2007 PLANNING COMMISSION

01/08/07



ZON-18972 AND VAR-18973 - APPLICANT/OWNER: MAX JONES PROFESSIONAL PLAZA  
1506 SOUTH JONES BOULEVARD  
FEBRUARY 8, 2007 PLANNING COMMISSION

01/08/07



ZON-18972 AND VAR-18973 - APPLICANT/OWNER: MAX JONES PROFESSIONAL PLAZA  
1506 SOUTH JONES BOULEVARD  
FEBRUARY 8, 2007 PLANNING COMMISSION

01/08/07