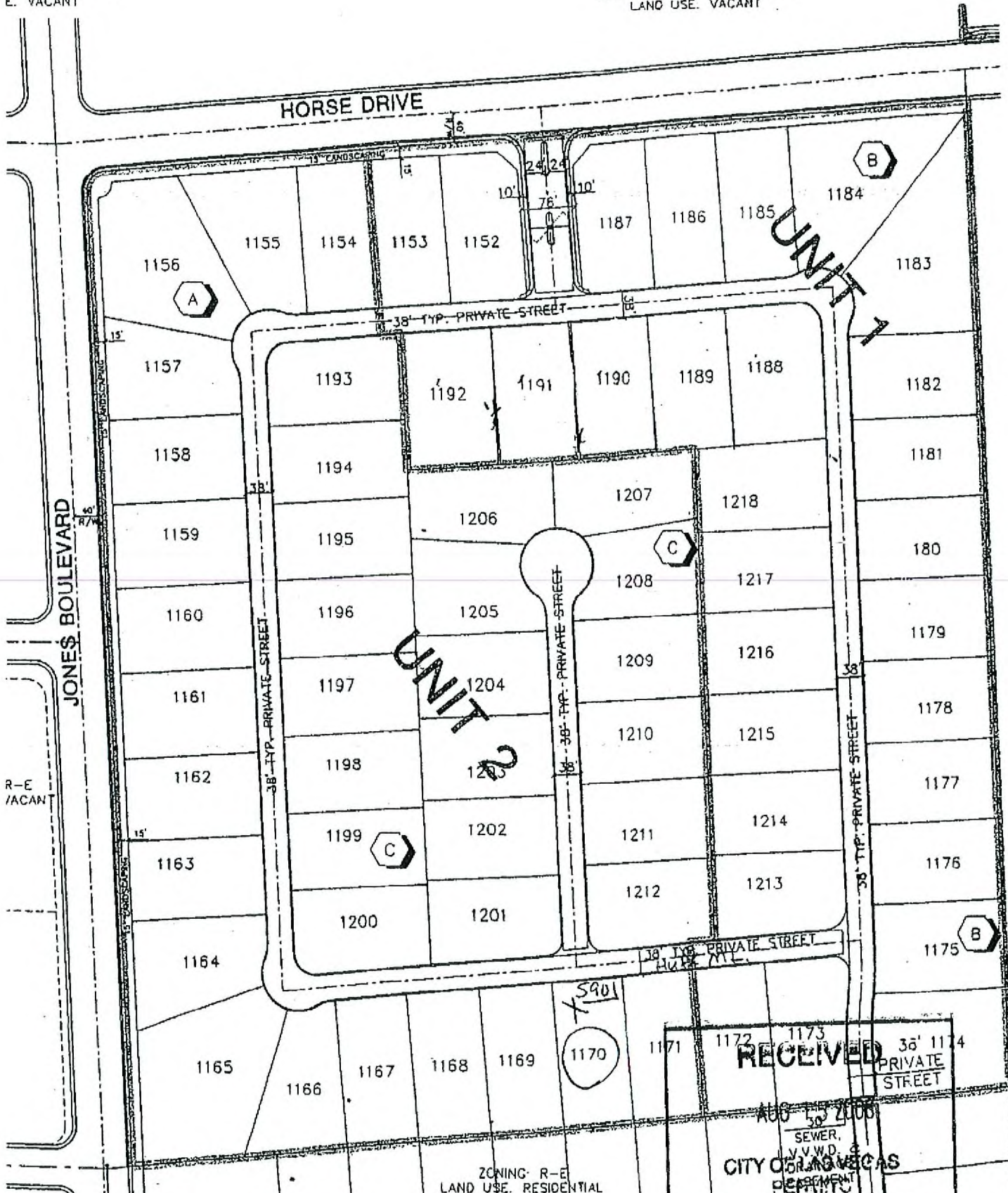




(CLARK COUNTY)  
E. VACANT

ZONING R-E (CLARK COUNTY)  
LAND USE. VACANT



JONES BOULEVARD

R-E  
VACANT

HORSE DRIVE

UNIT 1

UNIT 2

RECEIVED

AUG 15 2006

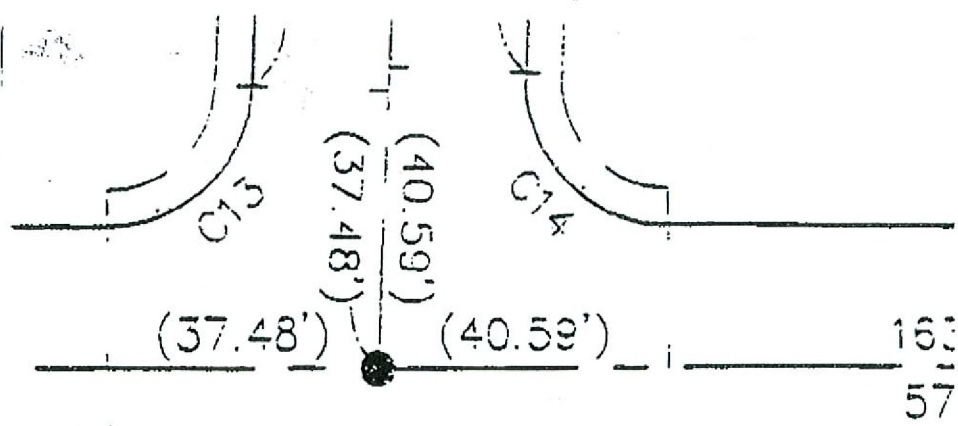
SEWER,  
V.V.W.D. &  
CITY OF LAS VEGAS  
PERMITS

ZONING: R-E  
LAND USE: RESIDENTIAL

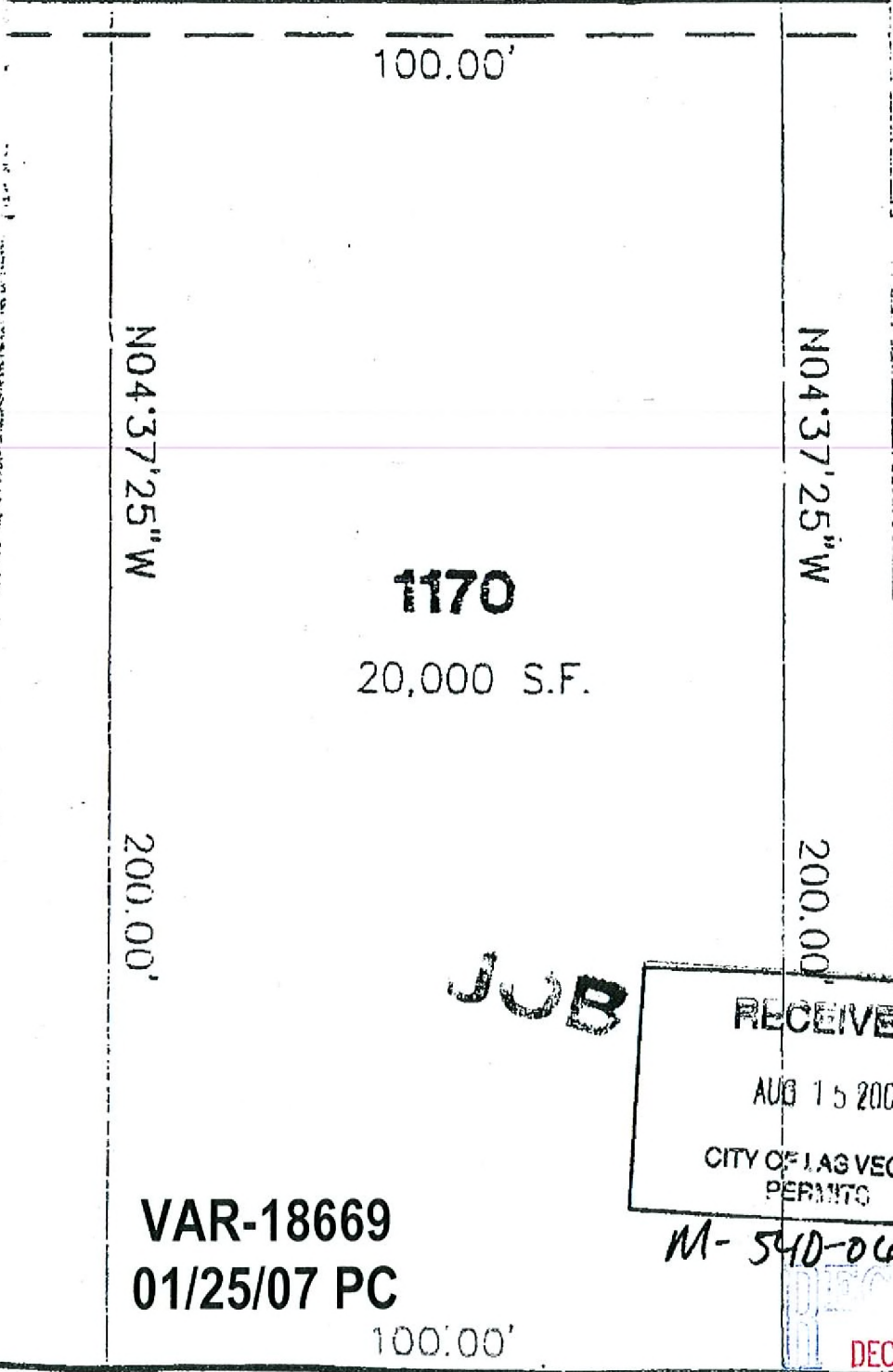
VAR-18669  
01/25/07 PC

RECEIVED  
DEC 12 2006

JOB M-540-06



HUFF MOUNTAIN AVE



N04°37'25"W

N04°37'25"W

**1170**

20,000 S.F.

200.00'

200.00'

100.00'

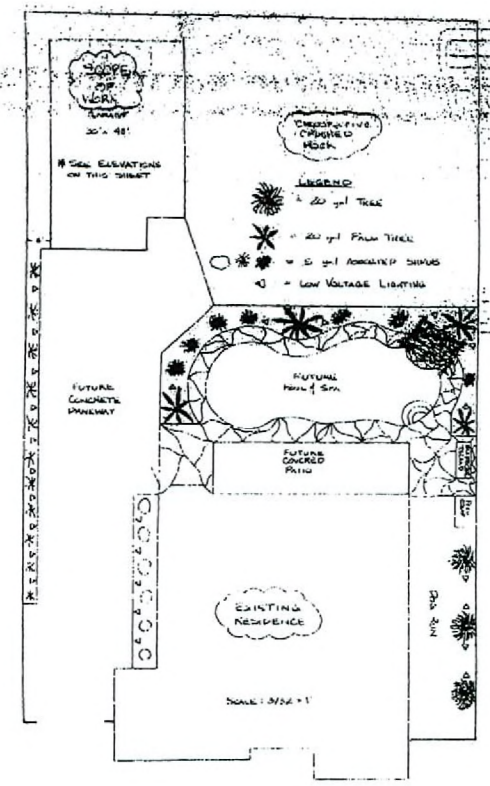
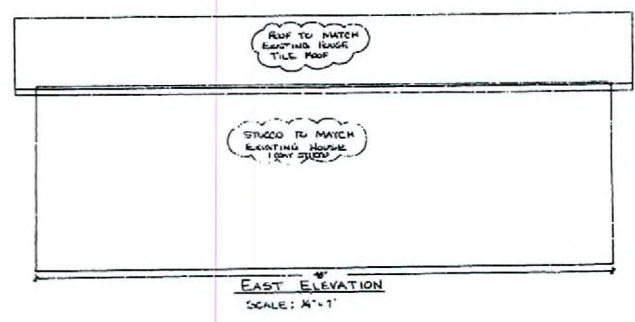
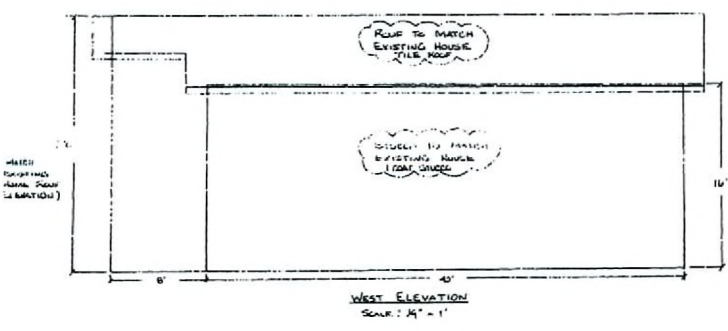
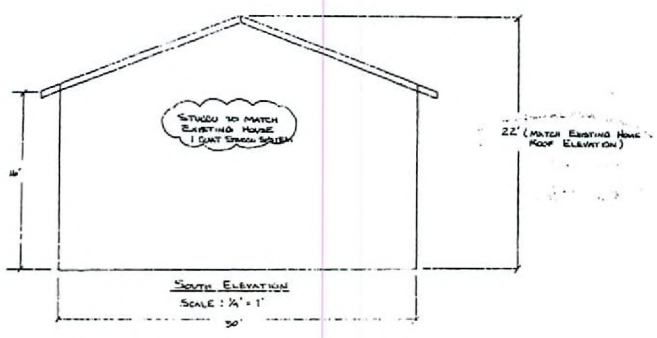
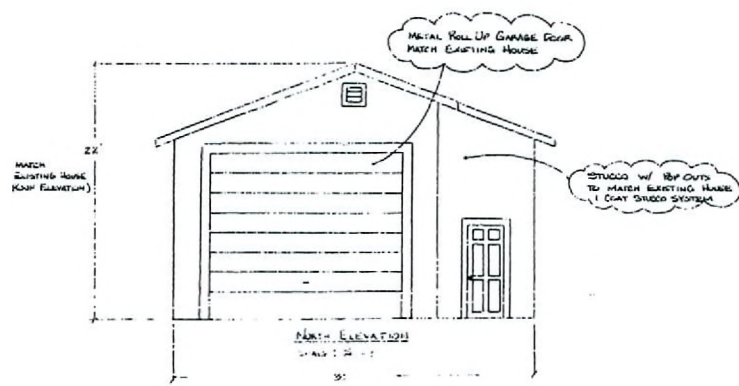
**JOB**

**RECEIVED**  
 AUG 15 2008  
 CITY OF LAS VEGAS  
 PERMITS

M-540-06

**VAR-18669**  
**01/25/07 PC**

**RECEIVED**  
 DEC 12 2008



DEC 12 2006

M-540-06

AN ACCESSORY STRUCTURE  
MUST BE AESTHETICALLY  
COMPATIBLE WITH THE  
PRINCIPAL DWELLING UNIT.

See plan for location of garage lot

1-230 APPROVED  
DECEMBER 12 2006  
L.S. 15-20

APPROVED  
NO. 1008  
12-12-06

FOR JENNIE MORIN AND  
ERIC MORIN, 1008  
-AS VEHICLES IN 2001  
OWNER/BUILDER  
-SHELLY K. H.-  
8/19/06

MORIN RESIDENCE  
DETACHED GARAGE &  
BACK YARD LANDSCAPE  
EAST 200' 0\"/>

VAR-18669  
01/25/07 PC