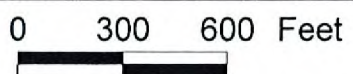


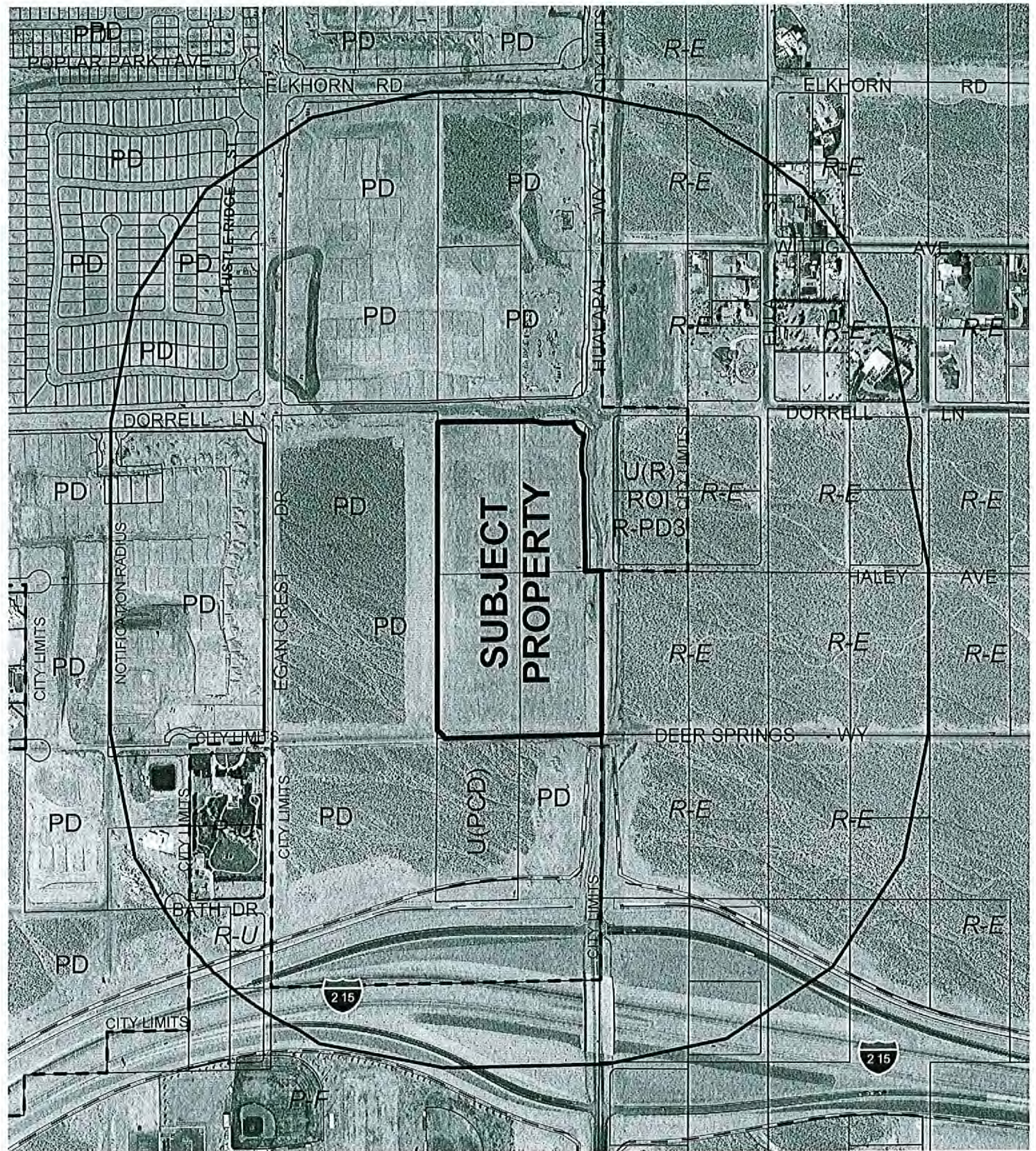
CASE: **VAR-17127**

RADIUS: 1000 FT

ZONING OF SUBJECT PROPERTY:

PD (PLANNED DEVELOPMENT) AND U (UNDEVELOPED) ZONE [PCD (PLANNED COMMUNITY DEVELOPMENT) LAND USE DESIGNATION] UNDER RESOLUTION OF INTENT TO PD (PLANNED DEVELOPMENT) ZONE [M (MEDIUM DENSITY RESIDENTIAL) CLIFF'S EDGE SPECIAL LAND USE DESIGNATION]





CASE: VAR-17127

RADIUS: 1000 FT

ZONING OF SUBJECT PROPERTY:

PD (PLANNED DEVELOPMENT) AND U (UNDEVELOPED) ZONE [PCD (PLANNED COMMUNITY DEVELOPMENT) LAND USE DESIGNATION] UNDER RESOLUTION OF INTENT TO PD (PLANNED DEVELOPMENT) ZONE [M (MEDIUM DENSITY RESIDENTIAL) CLIFF'S EDGE SPECIAL LAND USE DESIGNATION]

0 300 600 Feet

