



PLANNING & DEVELOPMENT DEPARTMENT

STATEMENT OF FINANCIAL INTEREST

Case Number: EOT-18350 APN: 125-20-114-007

Name of Property Owner: Arizona Investors, LLC

Name of Applicant: Arizona Investors, LLC

Name of Representative: Todd L. Kessler

To the best of your knowledge, does the Mayor or any member of the City Council or Planning Commission have any financial interest in this or any other property with the property owner, applicant, the property owner or applicant's general or limited partners, or an officer of their corporation or limited liability company?

Yes

No

If yes, please indicate the member of the City Council or Planning Commission who is involved and list the name(s) of the person or persons with whom the City Official holds an interest. Also list the Assessor's Parcel Number if the property in which the interest is held is different from the case parcel.

City Official: _____

Partner(s): _____

APN: _____

Signature of Property Owner:

Print Name: Steven Mack-Manager, Arizona Investors, LLC

Subscribed and sworn before me

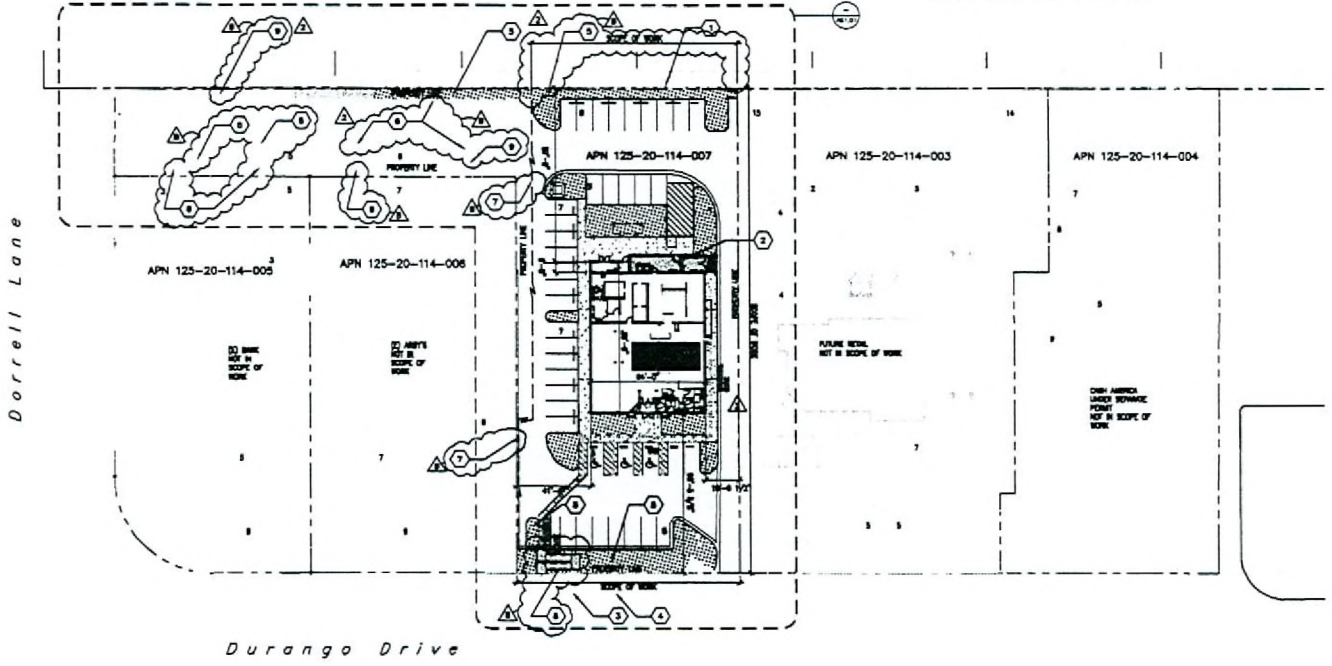
This 27th day of November, 2010

Notary Public in and for said County and State



BANK (FINANCIAL INSTITUTION)	ARBY'S (RESTAURANT)	TIMBERS (RESTAURANT/TAVERN/BAR)	FUTURE RETAIL (CONVENIENCE STORE)	CASH AMERICA (RETAIL)
Building 3,185 SF	Building 3,272 SF Kitchen 1,438 SF	Building 5,289 SF Kitchen 2,643 SF	Building 4,246 SF	Building 5,472 SF
Required Parking 18 Spaces (Total) (1/200 a.f. of GFA)	Required Parking 63 Spaces (Total) (1/200 a.f. of Public Building & Trading Area, 1/750 a.f. of 10 min. spacing)	Required Parking 61 Spaces (Total) (1/200 a.f. of Public Building & Trading Area, 1/750 a.f. of 10 min. spacing)	Required Parking 17 Spaces (Total) (1/200 a.f. of GFA)	Required Parking 37 Spaces (Total) (1/178 a.f. of GFA)

TOTAL PARKING SPACES REQUIRED: 174
TOTAL PARKING SPACES PROVIDED: 196



 SITE PLAN
1/32" = 1'-0"

SITE PLAN NOTES

1. MINIMIZE SLOPE FOR PROPS ON THE SIDEWALK @ 10%.
2. CHECKED SHALL CONFIRMED THE SHED AND ALL OTHER TRUCK PILES TO CONSTRUCTION AND OTHER NOT INDICATED TO BE REMOVED AT THIS TIME.

SHEET KEYNOTES

1. EXISTING CURB WALL
2. 4'-0" HIGH CURB WALL AT SIDE OF ROAD
3. EXISTING LIGHT POLE FEATURE
4. EXISTING FIRE HYDRANT
5. NEW LANDSCAPING, SEE LANDSCAPE PLAN (L10)
6. EXISTING CURB, SEE CIVIL PLANS
7. SUGGEST FOR WHICH EXISTING AC, SEE CIVIL DRAWING
8. NEW ACCESSIBLE RAMP FOR CURB CHANGING, SEE ALSO DETAIL 11-B-12 ON SHEET A-100
9. EXISTING LANDSCAPING

Item	Date	Description
1	02/24/06	REV
2	02/24/06	REV
3	02/24/06	REV

CONTRACTOR
BRESLIN BUILDERS
13325 POLARIS AVENUE, SUITE B
LAS VEGAS, NEVADA 89139
TEL: 702.795.3817
FAX: 702.795.3808
WWW.BRESLINBUILDERS.COM

BRESLIN BUILDERS
13325 POLARIS AVENUE, SUITE B
LAS VEGAS, NEVADA 89139
TEL: 702.795.3817
FAX: 702.795.3808
WWW.BRESLINBUILDERS.COM

Project
TIMBERS AT MONTECITO
DURANGO DRIVE/DORRELL LANE
APN: 125-20-114-007

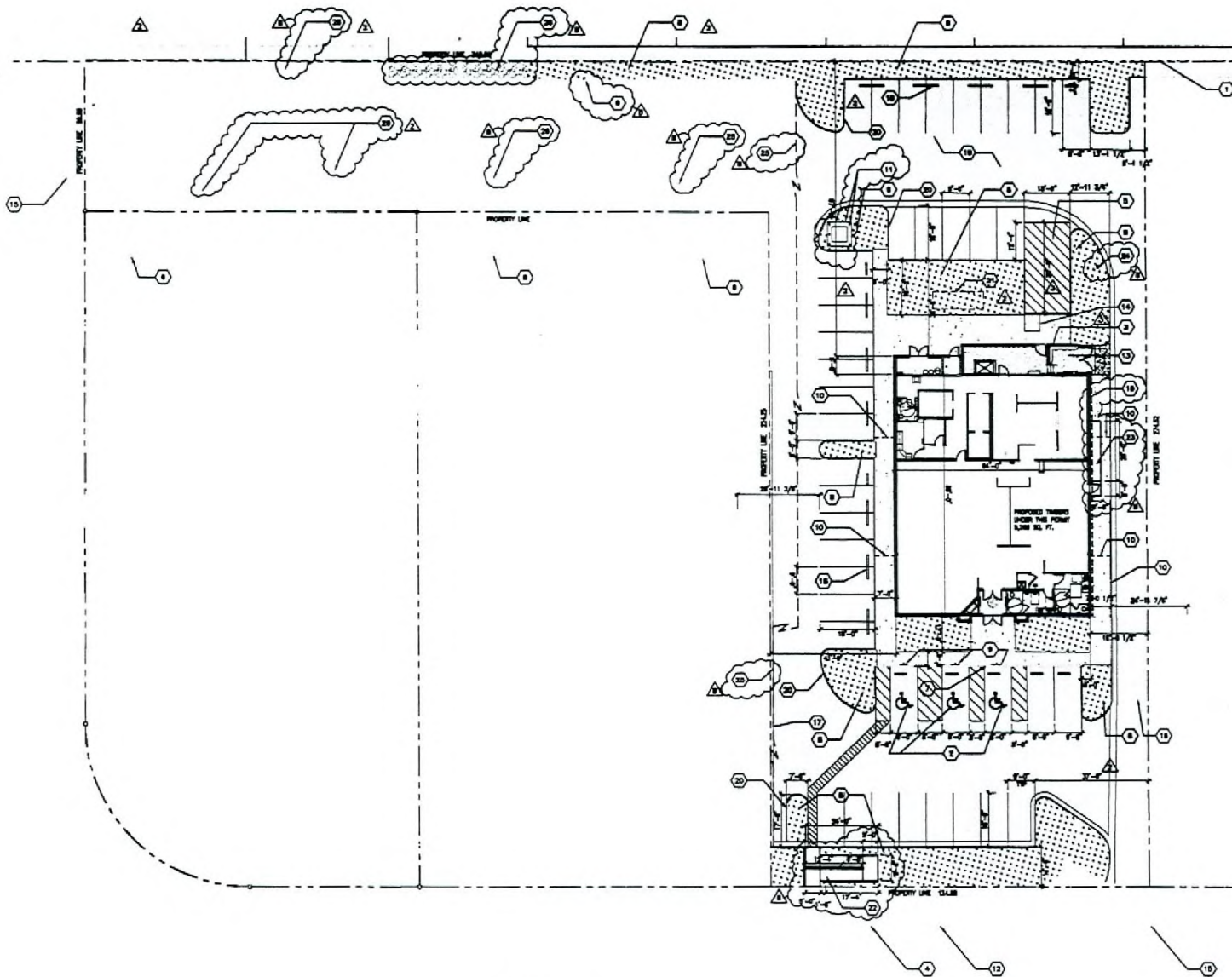
Sheet Title
SITE PLAN

Drawn By: TMB/CAA
Checked By: TMB
Date: 02/24/06
Project No.: 1305A
Jurisdiction: CA
City: Las Vegas

NOV 28 2006

EOT-18350
01/17/06 CC

AS1.00



ENLARGED SITE PLAN
1/16" = 1'-0"

EOT-18350
01/17/06 CC

SITE PLAN NOTES

REFER TO SHEET FOR TYPICAL NOTES & CHIL DRAWINGS FOR MORE INFORMATION.
 ALL CONCRETE AS PREPARED SHALL BE TO FACE OF FORMS UNLESS OTHERWISE NOTED.
 FOR SEE LANDING MARK TO EXISTING WALLS FOR EXISTING LIGHT POLE SEE SHEET TO TABLE.

SHEET KEYNOTES

- EXISTING CURB SHALL REMAIN & BE FINISHED IN PLACE.
- ACCESSIBLE SHALL BE MAINTAINED FOR PARKING.
- IF-IF FROM CURB WALL AT SIDE OF ROAD, SEE EXISTING ELEVATIONS OR ALSO A ALIGN FOR SIDE S/W.
- EXISTING OFF-SEE LIGHT POLE PROFILE.
- 17'x17' LANDING CONC FOR CITY OF LAS VEGAS TYLE 18
- EXISTING CONCRETE CURB OR PREPARED BY OTHERS
- EXPOSED CURB FOR HANDICAPPED ACCESS FOR CHIL DRAWING.
- NEW LANDSCAPE PLANTING FOR LEGS OR ALLIG.
- PROVIDE ACCESSIBLE WALL FINISH, SEE 4/18/02
- SEAL DRAIN DURING TO CURB, SEE PLUMBING DRAWING FOR MORE INFORMATION.
- PROPOSED MASONRY FINISH TRANSFORMER AND LEGION, PROVIDE 60# RE BOLLARD TYP. AS SHOWN, SEE SHEET 10/18/02
- EXISTING OFF-SEE FINE MOUNT
- TRASH ENCLOSURE, SEE 1/18/02
- ACCESS RAMP WITH MAX. SLOPE OF 1:12
- EXISTING DRIVEWAY, SEE CHIL DRAWING
- SEE IMPACT STATE AREA CONFORMANCE TO CONFIRMATE LIMITS OF WORK
- NEEDLECLIFF VALLEY WATER AS REQUIRED, SEE CHIL DRAWING
- TRASH SHEDS TYPICAL, REQUIRED TO PREVENT OBSTRUCTION OF ALL LANDSCAPE AREAS, AND ALL BUILDINGS THAT ARE LESS THAN 7' HIGH.
- EXISTING FORMER SEE TO CURB AT NORTH SIDE OF BUILDING FOR CHIL DRAWING.
- NEW CONCRETE CURB, SEE CHIL PLAN
- EXISTING INTERSECTION, IMPROVE PLUMBING DRAWING
- ACCESSIBLE CONCRETE RAMP TO SIDE OF BUILDING IF CURB WALL AND 24" HIGH SEAL FINISHES SHALL BE TO FACE FROM FINISHED SURFACE OF RAMP SLOPE, PROVIDE IF CONCRETE CURB IS SMALL, SIDE OF BUILDING TO NEW LANDSCAPE PLANTING CHIL DRAWING. PROVIDE IF CURB REMAINS WALL AT SOUTH SIDE, SEE CHIL DRAWING FOR MORE INFORMATION & SEE 10/18/02
- ACCESSIBLE CONCRETE RAMP TO/FROM BUILDING IF FINISHED OF NEW NEAR HANDICAPPED FROM FINISHED SURFACE OF RAMP SLOPE, SEE CHIL DRAWING FOR MORE INFORMATION, SEE 8/18/02
- NEW PAVE DRIVEWAY FOR CHIL DRAWING
- SMOOTH AND BRUSH DRIVEWAY AC FOR CHIL DRAWING
- EXISTING OFF-SEE LANDSCAPE

Symbol	Color	Description
▲	Green	Site Boundary
▲	Yellow	Proposed
▲	Blue	Existing
▲	Red	Other

CONTRACTOR
 BRESLIN BUILDERS
 1000 POLANS AVENUE, SUITE 100
 LAS VEGAS, NEVADA 89168
 (702) 798-3877
 FAX (702) 798-3808
 WWW.BRESLINBUILDERS.COM

BRESLIN BUILDERS
 LICENSE # 00018199
 1000 POLANS AVENUE, SUITE 100
 LAS VEGAS, NEVADA 89168
 (702) 798-3877
 FAX (702) 798-3808
 WWW.BRESLINBUILDERS.COM

Project:
TIMBERS AT MONTECITO
 DURANGO DRIVE/DOREL LANE
 A.P.N. 125-20-114-007

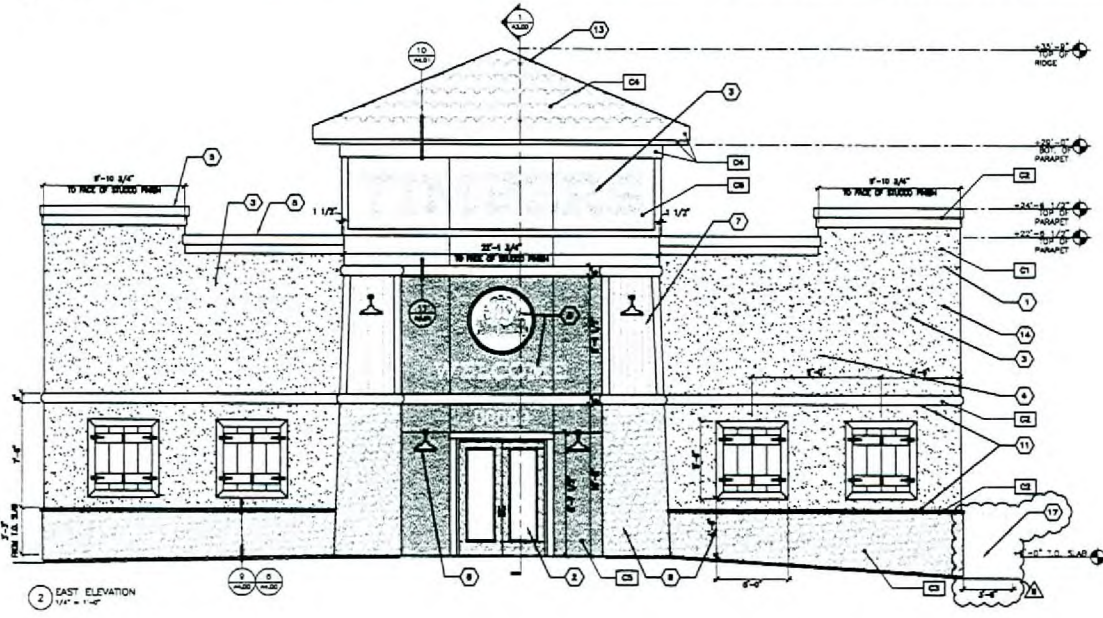
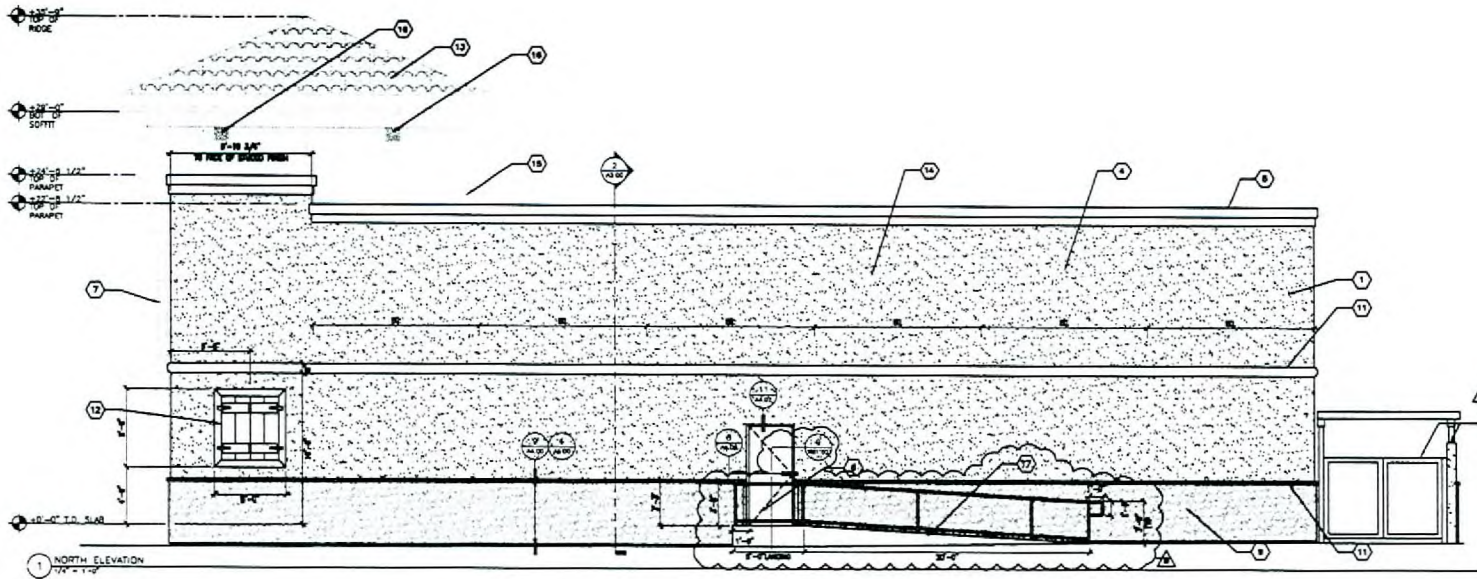
Sheet Title:
ENLARGED SITE PLAN

Date: 02/24/06
 Project No.: 1305A
 Location: Las Vegas

Designed By: TIM/CAA
 Drawn By: CA
 Checked By: TIM

AS1.01

P:\13\1305A\Timbers at Montecito\Drawings\Site Plans\Site Plan.dwg, 11/02/05, 11:37:57 AM, Author: Pkg.ac



SHEET KEYNOTES

- 1 7/8" GYPSUM PLASTER OVER BRICK FRAMING, FINISHED WITH LAMBRUNNE PAINT, TYP.
- 2 INTERMEDIATE TENS BRICK OF PLAIN BRICK, PORTLAND CEMENT MORTAR
- 3 BRICKS BRUNN, BRICKS BRUNN, PORTLAND CEMENT MORTAR
- 4 BRICKS BRUNN, BRICKS BRUNN, PORTLAND CEMENT MORTAR
- 5 BRICKS BRUNN, BRICKS BRUNN, PORTLAND CEMENT MORTAR
- 6 BRICKS BRUNN, BRICKS BRUNN, PORTLAND CEMENT MORTAR
- 7 BRICKS BRUNN, BRICKS BRUNN, PORTLAND CEMENT MORTAR
- 8 BRICKS BRUNN, BRICKS BRUNN, PORTLAND CEMENT MORTAR
- 9 BRICKS BRUNN, BRICKS BRUNN, PORTLAND CEMENT MORTAR
- 10 BRICKS BRUNN, BRICKS BRUNN, PORTLAND CEMENT MORTAR
- 11 BRICKS BRUNN, BRICKS BRUNN, PORTLAND CEMENT MORTAR
- 12 BRICKS BRUNN, BRICKS BRUNN, PORTLAND CEMENT MORTAR
- 13 BRICKS BRUNN, BRICKS BRUNN, PORTLAND CEMENT MORTAR
- 14 BRICKS BRUNN, BRICKS BRUNN, PORTLAND CEMENT MORTAR
- 15 BRICKS BRUNN, BRICKS BRUNN, PORTLAND CEMENT MORTAR
- 16 BRICKS BRUNN, BRICKS BRUNN, PORTLAND CEMENT MORTAR
- 17 BRICKS BRUNN, BRICKS BRUNN, PORTLAND CEMENT MORTAR

COLOR SCHEDULE

C1	FIELD AREA TYPICAL, PRICE P.C. NO. 100 CHINA
C2	TRAIL, POP-OUT, PRICE P.C. NO. 100 SAND BODY
C3	SMALLER SPINE VENEERS BY CLAYTON BRICK, LINE THREE BRICKS BRUNN, BRICKS BRUNN, PORTLAND CEMENT MORTAR
C4	CONCRETE 1/2" HOOP OR TILE CONCRETE 1/2" HOOP, CHAIRS AND CURBS, PRICE P.C. NO. 100 CHINA
C5	ACCEPT AREA, PRICE P.C. NO. 100 SAND BODY
C6	ACCEPT AREA, PRICE P.C. NO. 100 SAND BODY

CONTRACTOR

BRESLIN BUILDERS
 17 MILA CERRILLO AVENUE
 LAS VEGAS, NEVADA 89115
 LICENSE NO. A0018199
 6025 POLARIS AVENUE, SUITE 8
 LAS VEGAS, NEVADA 89118
 (702) 796-2877
 FAX (702) 796-2808
 www.breslinbuilders.com

Project

TIMBERS AT MONTECITO
 DURANGO DRIVE/DORREL LANE
 A.P.N. 125-20-114-037

Sheet Title

EXTERIOR ELEVATIONS

Date: 02/24/06
 Project No.: 1300A
 Jurisdiction: Las Vegas

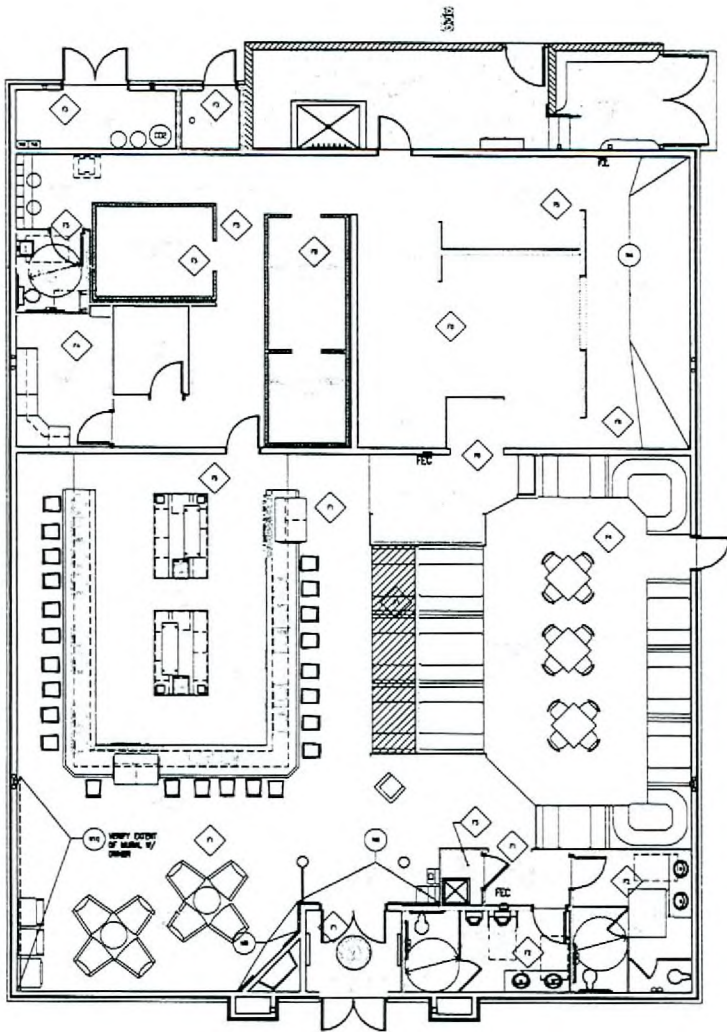
Designed By: TMB/CAA
 Drawn By: CA
 Checked By: TMB

EOT-18350
 01/17/06 CC

NOV 24 2006

A2.00

P:\1300A\1300A Timbers at Montecito\1300A Timbers at Montecito\1300A Timbers at Montecito.dwg
 11/07/06 11:10:00 AM
 1300A Timbers at Montecito.dwg
 11/07/06 11:10:00 AM
 1300A Timbers at Montecito.dwg



FINISH FLOOR PLAN
SCALE 3/16" = 1'-0"

FINISH SCHEDULE

ROOM #	ROOM NAME	FLOOR	WALLS	CEILING	NOTES
101	KITCHEN	1	1	1	1
102	DINING	1	1	1	1
103	OFFICE	1	1	1	1
104	OFFICE	1	1	1	1
105	OFFICE	1	1	1	1
106	OFFICE	1	1	1	1
107	OFFICE	1	1	1	1
108	OFFICE	1	1	1	1
109	OFFICE	1	1	1	1
110	OFFICE	1	1	1	1
111	OFFICE	1	1	1	1
112	OFFICE	1	1	1	1
113	OFFICE	1	1	1	1
114	OFFICE	1	1	1	1
115	OFFICE	1	1	1	1
116	OFFICE	1	1	1	1
117	OFFICE	1	1	1	1
118	OFFICE	1	1	1	1
119	OFFICE	1	1	1	1
120	OFFICE	1	1	1	1

(A) WALL BASE OR METAL CORNER FINISH
 (B) FLOOR AND CHAIRMAN TOP FINISH
 (C) CEILING FINISH

FLOORING
 1. 2" FIBERED CONCRETE-APPLY COLOR EPoxy FINE COAT WITH ACRYLIC FLOOR MODELLED FLAKE. ACQUIT WITH DEBRIMENTAL WIRE CUTS, APPLY A CLEAR EPoxy TOPCOAT.
 2. CERAMIC TILE - 12" x 12" BROWN PRIMO GRAY
 3. POLISHED CONCRETE - BEAR
 4. BLUE GRAY CARPETING (ORNS CARPETING - HAPPEL 281800 CHEST OR BROWN)
 5. 24" QUARRY TILE-DUAL-TILE-RED BLACK PORCELAIN
 6. POLISHED CONCRETE SLAB

WALL
 1. 1/2" GYPSUM BOARD - NATURAL FINISH BOUQUET FLOR - BALL NIBBED TOP EDGE SPACE-STRAIGHT OR BOTTEN ROUNDED AND BEVELLED
 2. CERAMIC TILE COVE BASE TO MATCH WALL
 3. 6" FIBERED GLASS FIBRE FIBRO GLASS
 4. 1/2" QUARRY TILE COVER SHEETABLE- RED BLACK TO MATCH FS)

WALL
 1. PAINTED GYPSUM BOARD, PAIR FINISH PER REQUIREMENTS
 2. CERAMIC TILE 12"x12" DUAL-TILE/GRAY PRIMO GRAY WITH DUAL-TILE 4"x8" - 28114 CONNECTIONS AT INTERSECTIONS WITH CO COATS BROWN-GLOSS PAINTED GYP. BLD.
 3. FIBERGLASS REINFORCED POLYESTER (FRP PANELS), MARINE URETHANE APPROVED FOR INDUSTRIAL FOOD CONTACT WITH MARINE SURFACES, SURFACE AS REQUIRED, SURFACE TEXTURED, POSSIBLE, WHITE
 4. STAINLESS STEEL SURFACE (AT COOKING)
 5. FIBERGLASS REINFORCED POLYESTER (FRP PANELS), MARINE URETHANE APPROVED FOR INDUSTRIAL FOOD CONTACT WITH MARINE SURFACES, SURFACE AS REQUIRED, SURFACE TEXTURED, POSSIBLE, BLACK
 6. 1/2" UNPAINTED 3/8" GYPSUM BOARD, TYPE "X"
 7. CO COATS BROWN-GLOSS, PAINTED GYPSUM BOARD
 8. FULL HEIGHT UNPAINTED STONE VENEERING BY GRANULATED STONE, LAMP SHADE RIVER ROCK, AT FULL HEIGHT - REFERRED PER SEE SECTION HOLES, AND PER MANUFACTURER SPECIFICATIONS.
 9. 1/2" HALF ROUND HORIZONTAL LOGGE POLE 1/2" OVER BOTTOM OF LOGGE POLE 1/2" AFF. 80" LEVEL THROUGHOUT SPACE. ALSO, PERFORM 1/2" HALF ROUND LOGGE POLE CHAIR RAIL, 1/2" AFF. OVER TOP CHAIR RAIL, AT BASE LOCATIONS EXCEPT AT BUILT-IN FURNISHINGS AND BATH WALL, COORDINATE FINISH LEVELS WITH OWNER.
 10. 1/2" STUCCOED CHAIR RAIL, 1/2" ROUND ABOVE, COORDINATE WITH OWNER.
 11. STUCCOED CHAIR WALL, PAINTED (GLAZED) FINISH TO MATCH BUILDING SEE ELECTIONS

CEILING
 1. 5/8" UNPAINTED POLYESTER (FRP PANELS) CEILING TILE WITH 1/2" SHROTTED BROWN PAINT "FLAMMABLE" BROWN COLORED, WITH AN APPROXIMATE EQUAL 1/4" PERFORMANCE DOWN BROWN DUAL REINFORCED EPoxy OR SOLAR (L.C.C. 28-2584)
 2. "SHROTTED" BROWN COLORED 1/2" DOWN BROWN-GLOSS LINED PAIR CEILING AS RECOMMENDED BY MFR.
 3. POLISHED TRIMMER & ROOF 1/2" ABOVE ALL CEILING SURFACES ABOVE HORIZONTAL LOGGE POLE TO BE PAINTED BLACK, INCLUDING WALL.
 4. 3/4" UNPAINTED 3/8" GYPSUM BOARD, TYPE "X"

CONTRACTOR
BRESLIN BUILDERS
 18350 EOT-18350-114
 LICENSED GENERAL CONTRACTOR
 LICENSE #00119-08
 8025 POLARIS AVENUE, SUITE B
 LAS VEGAS, NEVADA 89118
 (702) 798-3877
 FAX (702) 798-3808
 www.breslinbuilders.com

Project: **TIMBERS AT MONTECITO**
 DURANGO DRIVEDORREL LANE
 A.P.N. 125-20-114-007

Date: 02/24/08
 Project No.: 1300A
 Location: Las Vegas

Drawn By: TSM/CAA
 Check By: TSM
 Date:

NOV 28 2006
A1.03

EOT-18350
01/17/06 CC