



PLANNING & DEVELOPMENT DEPARTMENT

STATEMENT OF FINANCIAL INTEREST

SUP-16160

Case Number: _____ APN: 162-06-201-003

Name of Property Owner: BP West Coast Products LLC

Name of Applicant: _____

To the best of your knowledge, does the Mayor or any member of the City Council or Planning Commission have any financial interest in this or any other property with the property owner, applicant, the property owner or applicant's general or limited partners, or an officer of their corporation or limited liability company?

Yes No

If yes, please indicate the member of the City Council or Planning Commission who is involved and list the name(s) of the person or persons with whom the City Official holds an interest. Also list the Assessor's Parcel Number if the property in which the interest is held is different from the case parcel.

City Official: _____

Partner(s): _____

APN: _____

Signature of Property Owner: *W Fillmore Wood, Jr.*

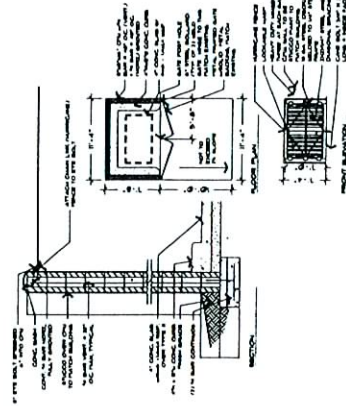
Print Name: W Fillmore Wood, Jr.

Subscribed and sworn before me

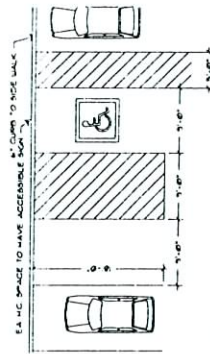
This 14th day of June, 2006

Chetna Patel
Notary Public in and for said County and State





1 TRASH ENCLOSURE
SCALE 1/8" = 1'-0"



2 HANDICAP PARKING
SCALE 1/8" = 1'-0"

SITE ANALYSIS

SITE INFO:

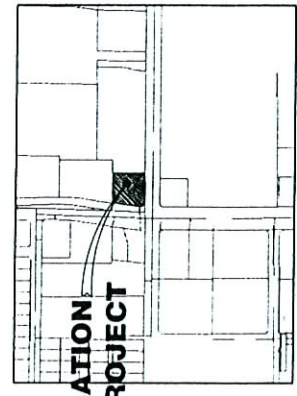
NO. OF SPACES: 0 SPACES
 NO. OF SPACES: 0 SPACES
 NO. OF SPACES: 0 SPACES
 NO. OF SPACES: 0 SPACES

REQUIRED PARKING:

C STORE: 3,651 (100% 3P)
 TOTAL REQUIRED SPACES: 3,651
 PROVIDED SPACES: 0
 REQUIRED ACCESSIBLE SPACES: 100
 ACCESSIBLE SPACES PROVIDED: 0

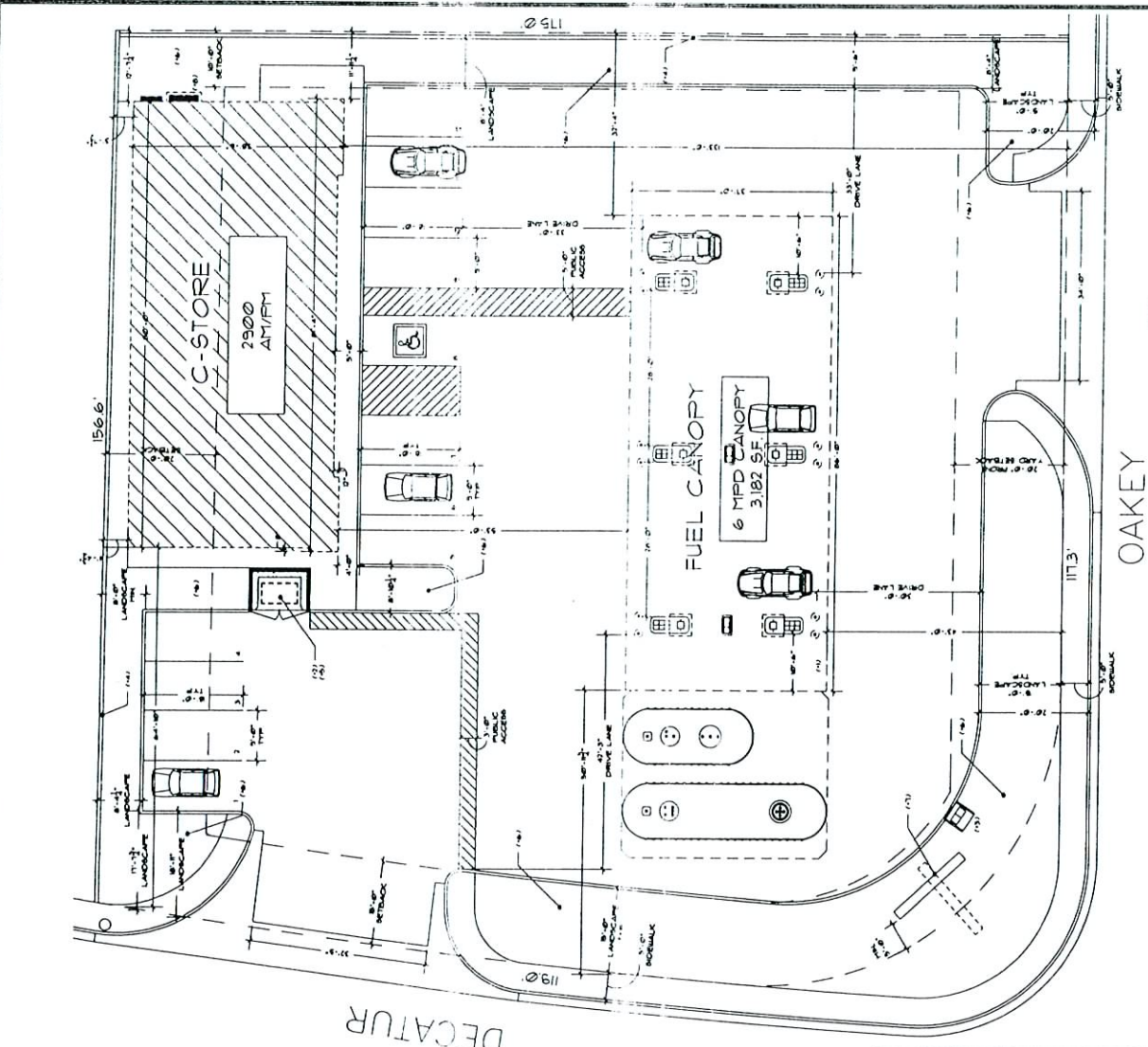
EXISTING USE:
24 HOUR AUTOM W/BEER + WINE SALES

FAC # 05312
1625 DECATUR
LAS VEGAS, NV.



LOCATION OF PROJECT

VICINITY MAP
SCALE N.T.S.



ARCHITECTURAL SITE PLAN
 CODE ANALYSIS
 FIRE APPARATUS PLAN

ARCHITECT: SUZANA RUTAR, Architect Ltd.
 1800 E Warm Springs Road
 Las Vegas Nevada 89119
 Telephone: (702) 651-0310
 Fax: (702) 361-4282

PROJECT NO. 1625 DECATUR
 DATE: 10/05/06
 SCALE: 1/8" = 1'-0"

DATE: 10/05/06
 SCALE: 1/8" = 1'-0"

A.I.O.

ARCHITECTURAL SITE PLAN
 SCALE 1/8" = 1'-0"

AUG 22 2006

VAR-16161 SUP-16160
 SDR-16158 10/05/06 PC

RELIANCE
ARCHITECTURAL
 1950 E. WERNER SPRINGS ROAD
 LAS VEGAS, NEVADA 89119
 TELEPHONE (702) 301-6178
 FAX (702) 301-2592
 A PROFESSIONAL CORPORATION

ARCO - FACILITY # 512
 REC OF DECALUP AND CASE
 1625 S DECALUP BLVD
 BOB AULVA
 LAS VEGAS, NEVADA

STORE ELEVATIONS

A4.1

GENERAL NOTES:

1. SEE ELECTRICAL SYMBOLS FOR LIGHT FIXTURES, SWITCHES, AND OUTLETS.
 2. SEE MECHANICAL SYMBOLS FOR VENTILATION, HEATING, AND AIR CONDITIONING.
 3. SEE PLUMBING SYMBOLS FOR SINKS, TOILETS, AND SHOWERS.

KEYED NOTES:

- C-01 ALUMINUM STOREFRONT SYSTEM
- C-02 ALUMINUM STOREFRONT SYSTEM - 119'-0" TO 115'-6" PARAPET
- C-03 ALUMINUM STOREFRONT SYSTEM - 115'-6" TO 100'-0" SLAB
- C-04 ALUMINUM STOREFRONT SYSTEM - 100'-0" TO 119'-0" TOWER
- C-05 ALUMINUM STOREFRONT SYSTEM - 119'-0" TO 115'-6" PARAPET
- C-06 ALUMINUM STOREFRONT SYSTEM - 115'-6" TO 100'-0" SLAB
- C-07 ALUMINUM STOREFRONT SYSTEM - 100'-0" TO 119'-0" TOWER
- C-08 ALUMINUM STOREFRONT SYSTEM - 119'-0" TO 115'-6" PARAPET
- C-09 ALUMINUM STOREFRONT SYSTEM - 115'-6" TO 100'-0" SLAB
- C-10 ALUMINUM STOREFRONT SYSTEM - 100'-0" TO 119'-0" TOWER
- C-11 ALUMINUM STOREFRONT SYSTEM - 119'-0" TO 115'-6" PARAPET
- C-12 ALUMINUM STOREFRONT SYSTEM - 115'-6" TO 100'-0" SLAB

EXTERIOR FINISHES:

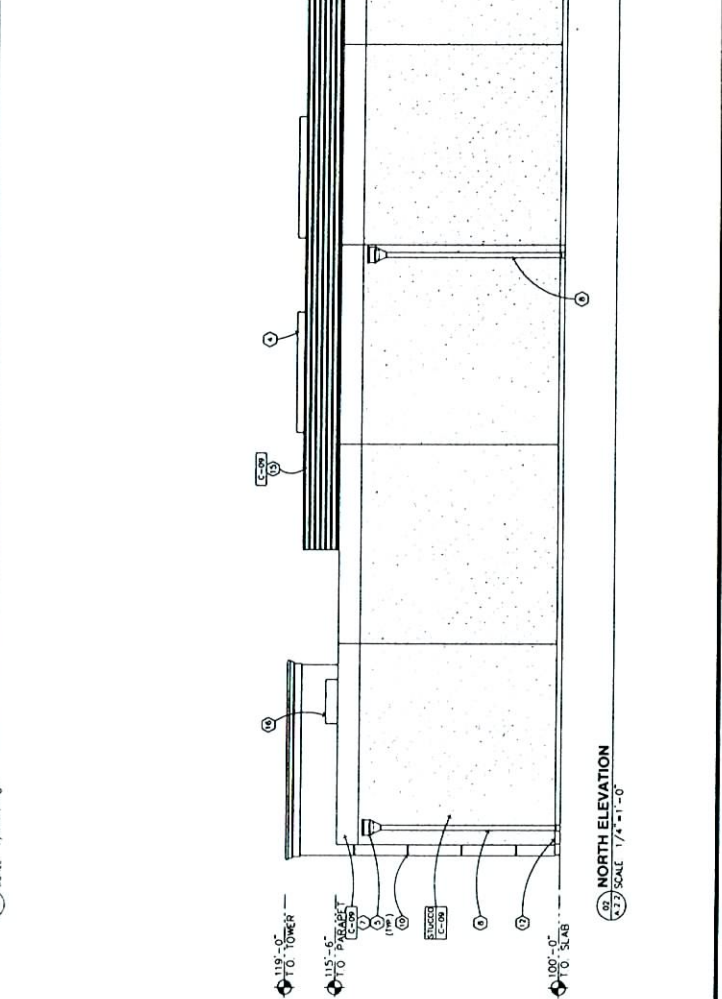
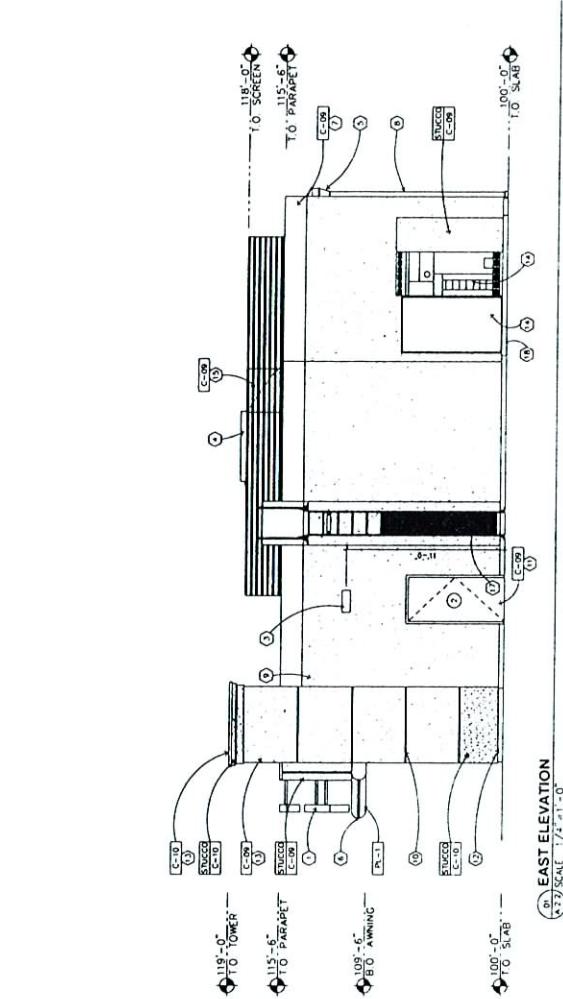
- E-01 WHITE GRADE POLYURETHANE COLORED ALUMINUM ANODIZING
- E-02 WHITE GRADE POLYURETHANE COLORED ALUMINUM ANODIZING
- E-03 WHITE GRADE POLYURETHANE COLORED ALUMINUM ANODIZING
- E-04 WHITE GRADE POLYURETHANE COLORED ALUMINUM ANODIZING
- E-05 WHITE GRADE POLYURETHANE COLORED ALUMINUM ANODIZING
- E-06 WHITE GRADE POLYURETHANE COLORED ALUMINUM ANODIZING
- E-07 WHITE GRADE POLYURETHANE COLORED ALUMINUM ANODIZING
- E-08 WHITE GRADE POLYURETHANE COLORED ALUMINUM ANODIZING
- E-09 WHITE GRADE POLYURETHANE COLORED ALUMINUM ANODIZING
- E-10 WHITE GRADE POLYURETHANE COLORED ALUMINUM ANODIZING
- E-11 WHITE GRADE POLYURETHANE COLORED ALUMINUM ANODIZING
- E-12 WHITE GRADE POLYURETHANE COLORED ALUMINUM ANODIZING

EXTERIOR PAINTS:

- P-01 COLOR CLEAR ANODIZED ALUMINUM FINISH
- P-02 COLOR CLEAR ANODIZED ALUMINUM FINISH
- P-03 COLOR CLEAR ANODIZED ALUMINUM FINISH
- P-04 COLOR CLEAR ANODIZED ALUMINUM FINISH
- P-05 COLOR CLEAR ANODIZED ALUMINUM FINISH
- P-06 COLOR CLEAR ANODIZED ALUMINUM FINISH
- P-07 COLOR CLEAR ANODIZED ALUMINUM FINISH
- P-08 COLOR CLEAR ANODIZED ALUMINUM FINISH
- P-09 COLOR CLEAR ANODIZED ALUMINUM FINISH
- P-10 COLOR CLEAR ANODIZED ALUMINUM FINISH
- P-11 COLOR CLEAR ANODIZED ALUMINUM FINISH
- P-12 COLOR CLEAR ANODIZED ALUMINUM FINISH

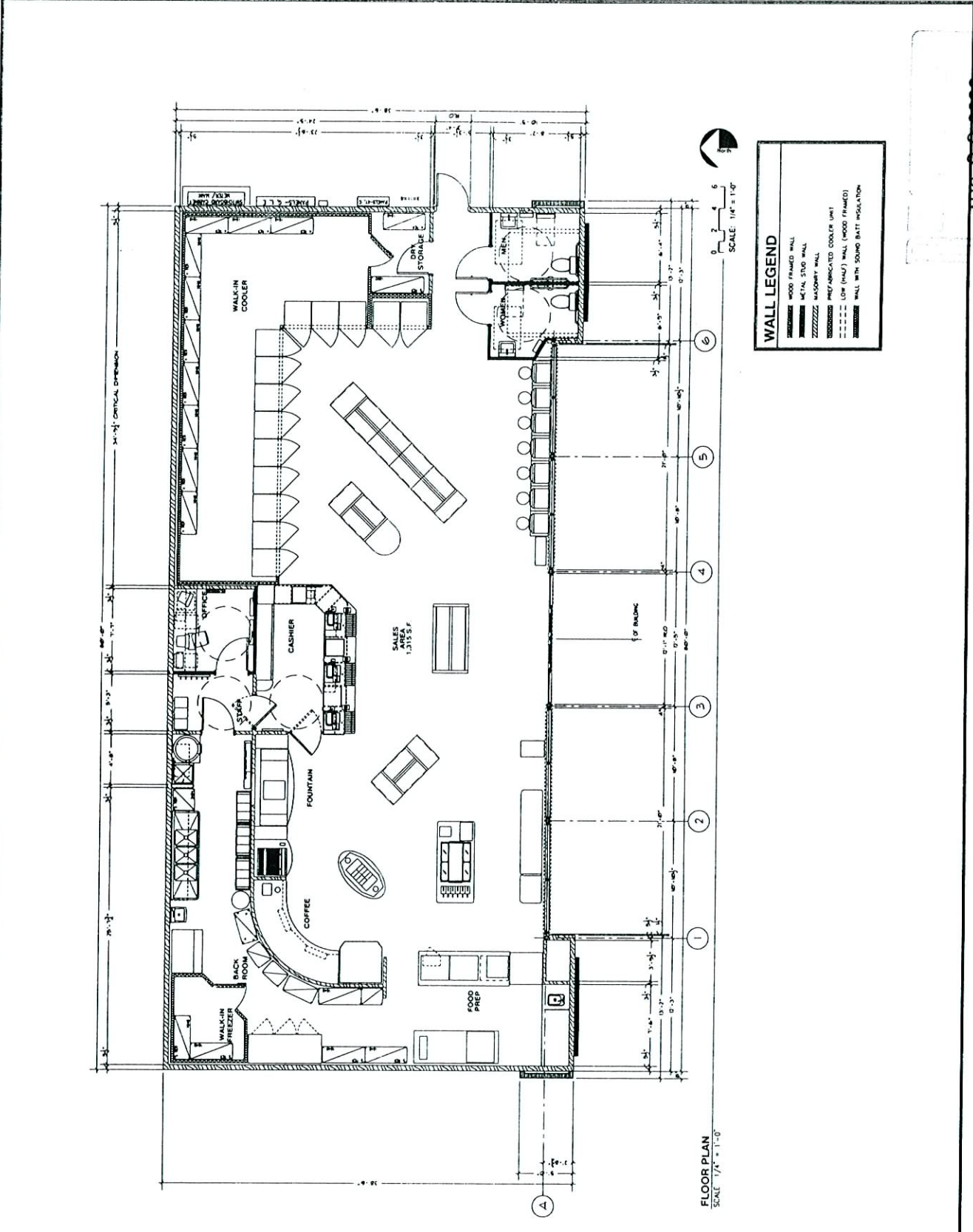
EXTERIOR ACCESS:

- A-01 ACCESS DOOR
- A-02 ACCESS DOOR
- A-03 ACCESS DOOR
- A-04 ACCESS DOOR
- A-05 ACCESS DOOR
- A-06 ACCESS DOOR
- A-07 ACCESS DOOR
- A-08 ACCESS DOOR
- A-09 ACCESS DOOR
- A-10 ACCESS DOOR
- A-11 ACCESS DOOR
- A-12 ACCESS DOOR



AUG 2 2 2006

VAR-16161 SUP-16160
SDR-16158 10/05/06 PC



WALL LEGEND

- WOOD FRAMED WALL
- METAL STUD WALL
- MASONRY WALL
- PRE-FABRICATED COOLER UNIT
- LOW (1/2") WALL (WOOD FRAMED)
- WALL WITH SOUND BATT INSULATION

SCALE: 1/4" = 1'-0"

FLOOR PLAN
 SCALE: 1/4" = 1'-0"

AUG 22 2006

VAR-16161 SUP-16160
 SDR-16158 10/05/06 PC