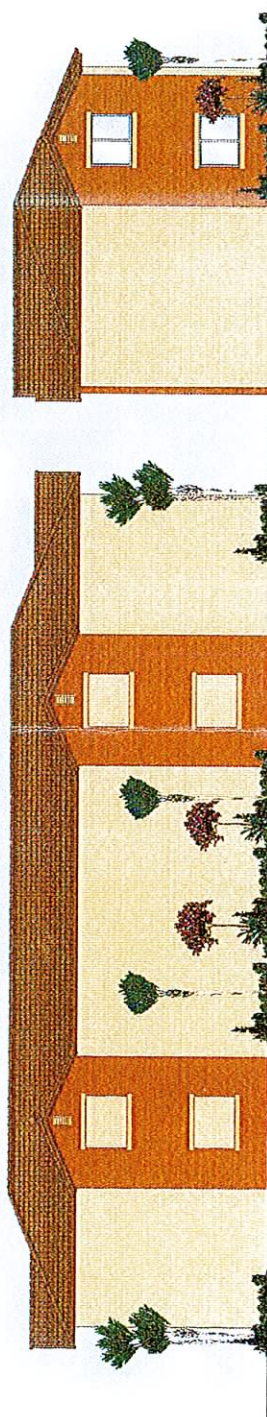


**NOTE: THE FOLLOWING DOCUMENTATION
WAS SUBMITTED FOR THE RECORD BEFORE
OR AT THE PLANNING COMMISSION HEARING
ON THIS ITEM WHICH IS NOW APPEARING
BEFORE THE CITY COUNCIL**



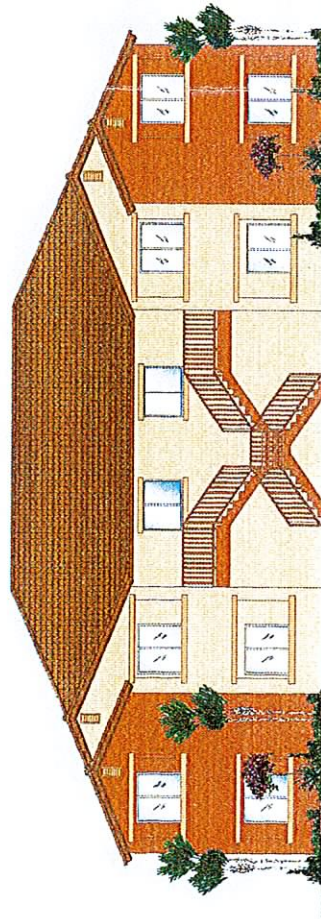
LEFT SIDE ELEVATION - 4 UNIT BUILDING

FRONT ELEVATION - 4 UNIT BUILDING



REAR ELEVATION - 4 UNIT BUILDING

RIGHT SIDE ELEVATION - 4 UNIT BUILDING



FRONT ELEVATION - 8 UNIT BUILDING



SIDE ELEVATION - 8 UNIT BUILDING

PANIFLOW APARTMENTS
EXTERIOR ELEVATIONS



921 AMERICAN PACIFIC DRIVE
SUITE 304
HENDERSON, NEVADA 89014
PH: 702-719-2020 FAX: 702-719-2024

Submitted to Planning Commission

Date 10/15/06 Item # 15-17