

"No act of kindness no matter how small, is wasted." ~ Aesop

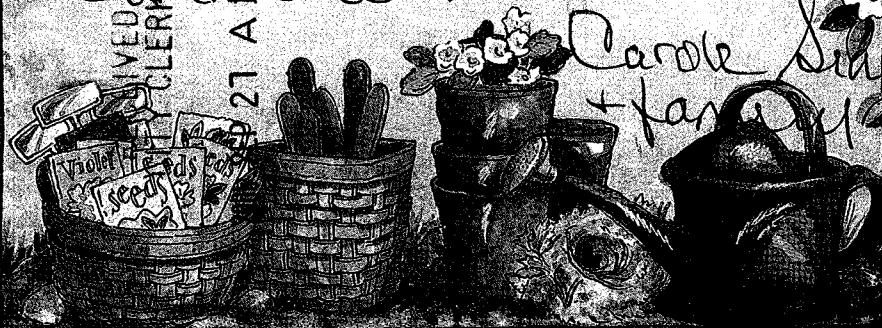
Carole & Rob Sears
6417 Doby Peak
Las Vegas, NV 89118

9-25-06

Please do not Protest
approve SUP-14692.

A letter of opposition
should be on file
with the Planning
Committee. Thanks

Carole & Rob
+ family



Submitted after final agenda

Date 9/27/06 Item #111



VICINITY MAP

60 SCALE

PARKING ANALYSIS

2040 SQUARE FOOT RETAIL SPACE
REQUIRES 11 PARKING SPACES

19 SPACES SHOWN ARE ASSIGNED TO THIS UNIT, INCLUDES ONE VAN ACCESSIBLE HANDICAP SPACE

RAPID CASH
4343 N RANCHO DRIVE
LAS VEGAS, NEVADA

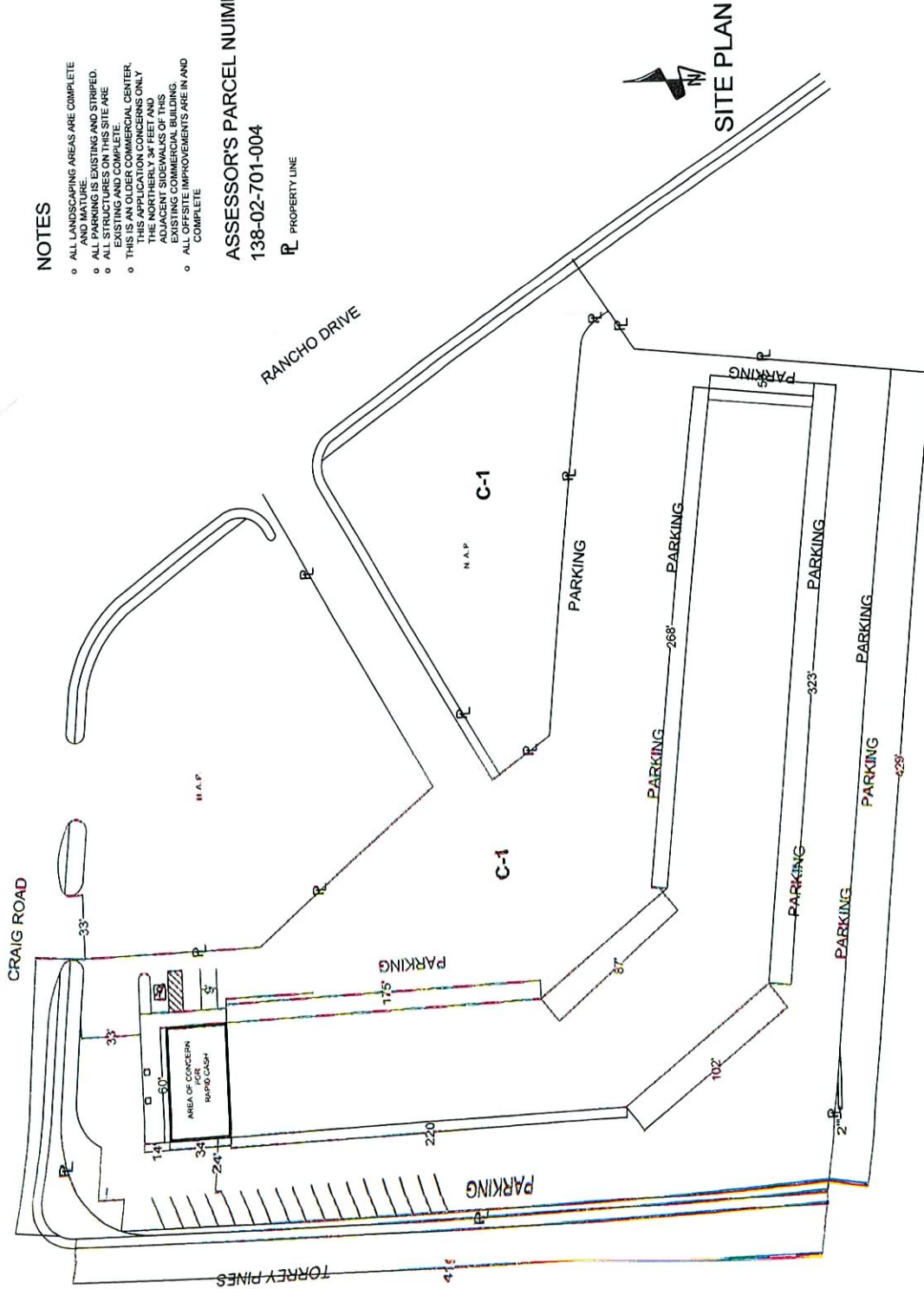
SUP-14692
08/24/06 PC

NOTES

- o ALL LANDSCAPING AREAS ARE COMPLETE AND MATURE
- o ALL PARKING IS EXISTING AND STRIPED. ALL SPACES ARE COMPLETE
- o ALL SIDEWALKS AND COMPLETE
- o THIS IS AN OLDER COMMERCIAL CENTER. THIS APPLICATION CONCERNS ONLY THE NORTHERLY 34 FEET AND ADJACENT SIDEWALKS OF BUILDING
- o ALL OFFSITE IMPROVEMENTS ARE IN AND COMPLETE

ASSESSOR'S PARCEL NUMBER
138-02-701-004

PROPERTY LINE



SITE PLAN