





OFFICE 1&2 - SOUTH & NORTH ELEVATION



OFFICE 1&2 - EAST & WEST ELEVATION

© 2006 R&S Investment Group, LLC. All Rights Reserved. For Office Center.  
 The drawings, specifications, and other documents prepared by R&S Investment Group, LLC are the property of R&S Investment Group, LLC. No part of these drawings, specifications, or other documents may be reproduced, stored in a retrieval system, or transmitted in any form or by any means, electronic, mechanical, photocopying, recording, or by any information storage and retrieval system, without the prior written permission of R&S Investment Group, LLC.

PROJECT NO. 105149, SEPTEMBER 29, 2006

## ELEVATIONS - OFFICE 1 & 2

**LIFESTYLE CENTER**  
 Las Vegas, Nevada

**R&S INVESTMENT GROUP**

**SDR-14114**  
**10-04-06 CC**  
**REVISED 10-03-06**





NORTH ELEVATION



SOUTH ELEVATION

**RECEIVED**  
OCT 03 2006

10 20 40

PARKING STRUCTURE A - ELEVATIONS

LIFESTYLE CENTER  
Las Vegas, Nevada

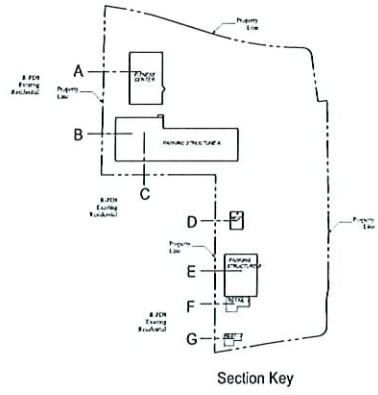
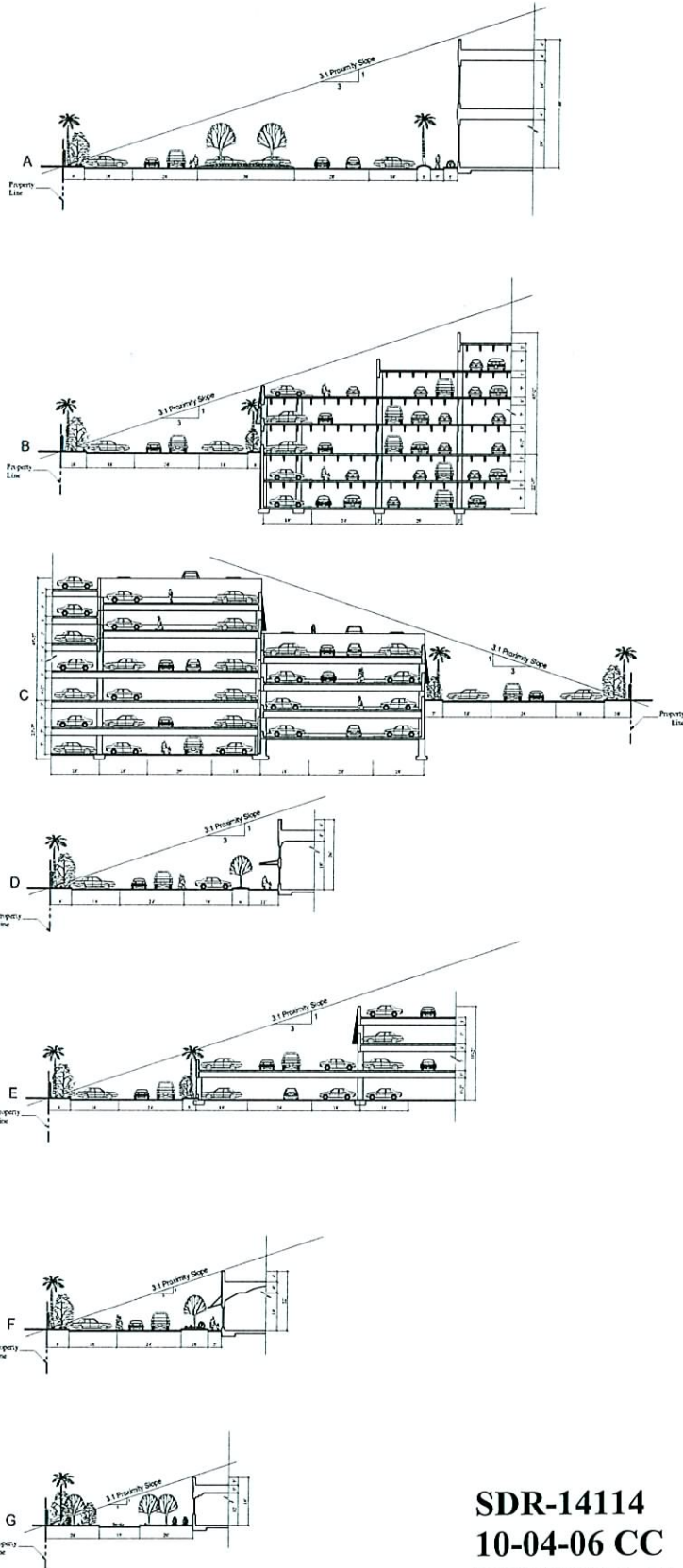
R&S INVESTMENT GROUP



SDR-14114  
10-04-06 CC  
REVISED 10-03-06

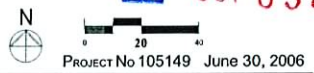
© Copyright 2006, R&S Investment Group, LLC. All Rights Reserved. This Drawing is a Conceptual in Nature and no Guarantee of its accuracy is implied. The Client/Architect retains the Right to make Design Modifications without notice. All Colors, Dimensions, Size and Architectural Features are Conceptual and Subject to Change. PROJECT NO. 105149, JUNE 07, 2006

Note:  
 This plan has been prepared without benefit of a complete survey.  
 It is Conceptual in Nature and No Guarantee of its accuracy is implied.



SDR-14114  
 10-04-06 CC  
 REVISED 10-03-06

RECEIVED  
 OCT 03 2006



© Copyright 2006, Perlman Design Group, Inc.  
 This Plan is Conceptual in Nature and no Guarantee of its Accuracy is Implied. The Owner/Architect reserves the Right to make Design Modifications without notice. All Colors, Dimensions, Sizes and Architecture Features are Conceptual and subject to Change.

Sectional Proximity Slope Analysis

R&S INVESTMENT GROUP

LIFESTYLE CENTER  
 Las Vegas, Nevada

Perlman  
 DESIGN GROUP

PROJECT No 105149 June 30, 2006

**KUMMER  
KAEMPFER**

**KUMMER KAEMPFER BONNER  
RENSHAW & FERRARIO**

ATTORNEYS AT LAW  
LAS VEGAS OFFICE

ROBERT J. GRONAUER  
[rgronauer@kkbrf.com](mailto:rgronauer@kkbrf.com)  
702.792-7000

LAS VEGAS OFFICE  
3800 Howard Hughes Parkway  
Seventh Floor  
Las Vegas, NV 89169  
Tel: 702.792.7000  
Fax: 702.796.7181

RENO OFFICE  
5585 Klattke Lane  
Reno, NV 89511  
Tel: 775.852.3900  
Fax: 775.852.3982

SUMMERLIN OFFICE  
3425 Cliff Shadows Parkway  
Suite 150  
Las Vegas, NV 89129  
Tel: 702.893.4280  
Fax: 702.898.8487

CARSON CITY OFFICE  
510 W. Fourth Street  
Carson City, NV 89703  
Tel: 775.882.1311  
Fax: 775.882.0257

October 4, 2006

**VIA FACSIMILE**  
382-4803

Ms. Barbara Jo Ronemus  
City Clerk  
City of Las Vegas  
400 E. Stewart, 1st Fl.  
Las Vegas, NV 89101

Re: *Decatur/I-215*  
*GPA-14118; ZON-14120; VAR-14122; SDR-14114*

Dear Ms. Ronemus:

Our office represents the applicant in the above-referenced matters. We respectfully request that these items be held from the presently scheduled City Council hearing of October 4, 2006 until October 18, 2006.

Thank you for your cooperation and please call if you have any questions.

Sincerely,

KUMMER KAEMPFER BONNER RENSCHAW & FERRARIO

Robert J. Gronauer

RJG/mlt

cc: Margo Wheeler (via fax: 385-7268)  
Sheila Lambert (via fax: 382-8558)

2006 OCT -4 A 9:09

RECEIVED  
CITY CLERK



250193\_1.DOC

Submitted after final agenda

Date 10/4/06 Item 72  
73  
74  
75

13880.1