

DATE	07/27/06
SCALE	1" = 10'-0"
PROJECT	VAR-11052 VAR-10779
CLIENT	FOR GAMNERSDR, LLC
DESIGNER	FOR GAMNERSDR, LLC
DATE	07/27/06

DATE	07/27/06
SCALE	1" = 10'-0"
PROJECT	VAR-11052 VAR-10779
CLIENT	FOR GAMNERSDR, LLC
DESIGNER	FOR GAMNERSDR, LLC
DATE	07/27/06

OVERALL SITE PLAN
 FOR GAMNERSDR, LLC
 DESIGN REVIEW

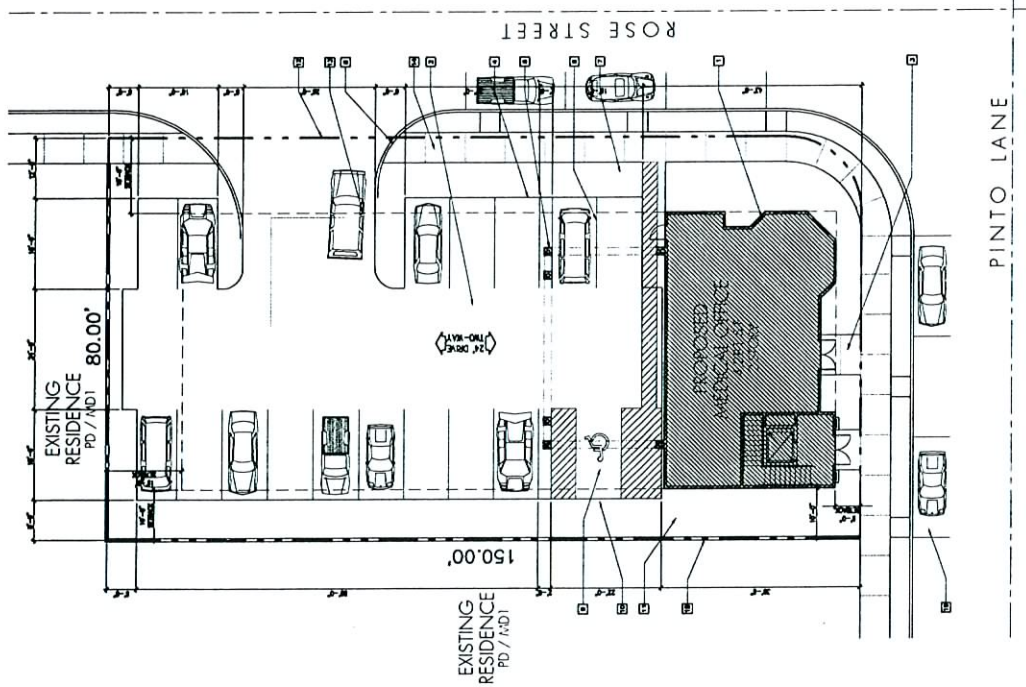
PINNACLE ARCHITECTURAL STUDIO, INC.
 7725 West Chisholm Blvd., Suite 100
 Overland Park, KS 66212
 913.646.1100
 www.pinnaclearchitect.com



VAR-11052 VAR-10779
 SDR-10777 07/27/06 PC LOCATION MAP
 REVISED



1 SITE PLAN
 SCALE: 1" = 10'-0"



- SITE PLAN KEYNOTES**
- 1 IMPROVED DRIVEWAY
 - 2 NEW A.C. DRIVE - REFER TO PLAN
 - 3 NEW DRIVEWAY - REFER TO PLAN
 - 4 NEW DRIVEWAY - REFER TO PLAN
 - 5 DRIVEWAY - REFER TO PLAN
 - 6 DRIVEWAY - REFER TO PLAN
 - 7 DRIVEWAY - REFER TO PLAN
 - 8 DRIVEWAY - REFER TO PLAN
 - 9 DRIVEWAY - REFER TO PLAN
 - 10 DRIVEWAY - REFER TO PLAN
 - 11 DRIVEWAY - REFER TO PLAN
 - 12 DRIVEWAY - REFER TO PLAN
 - 13 DRIVEWAY - REFER TO PLAN
 - 14 DRIVEWAY - REFER TO PLAN
 - 15 DRIVEWAY - REFER TO PLAN
 - 16 DRIVEWAY - REFER TO PLAN
 - 17 DRIVEWAY - REFER TO PLAN
 - 18 DRIVEWAY - REFER TO PLAN
 - 19 DRIVEWAY - REFER TO PLAN
 - 20 DRIVEWAY - REFER TO PLAN
 - 21 DRIVEWAY - REFER TO PLAN
 - 22 DRIVEWAY - REFER TO PLAN
 - 23 DRIVEWAY - REFER TO PLAN
 - 24 DRIVEWAY - REFER TO PLAN
 - 25 DRIVEWAY - REFER TO PLAN
 - 26 DRIVEWAY - REFER TO PLAN
 - 27 DRIVEWAY - REFER TO PLAN
 - 28 DRIVEWAY - REFER TO PLAN
 - 29 DRIVEWAY - REFER TO PLAN
 - 30 DRIVEWAY - REFER TO PLAN
 - 31 DRIVEWAY - REFER TO PLAN
 - 32 DRIVEWAY - REFER TO PLAN
 - 33 DRIVEWAY - REFER TO PLAN
 - 34 DRIVEWAY - REFER TO PLAN
 - 35 DRIVEWAY - REFER TO PLAN
 - 36 DRIVEWAY - REFER TO PLAN
 - 37 DRIVEWAY - REFER TO PLAN
 - 38 DRIVEWAY - REFER TO PLAN
 - 39 DRIVEWAY - REFER TO PLAN
 - 40 DRIVEWAY - REFER TO PLAN
 - 41 DRIVEWAY - REFER TO PLAN
 - 42 DRIVEWAY - REFER TO PLAN
 - 43 DRIVEWAY - REFER TO PLAN
 - 44 DRIVEWAY - REFER TO PLAN
 - 45 DRIVEWAY - REFER TO PLAN
 - 46 DRIVEWAY - REFER TO PLAN
 - 47 DRIVEWAY - REFER TO PLAN
 - 48 DRIVEWAY - REFER TO PLAN
 - 49 DRIVEWAY - REFER TO PLAN
 - 50 DRIVEWAY - REFER TO PLAN
 - 51 DRIVEWAY - REFER TO PLAN
 - 52 DRIVEWAY - REFER TO PLAN
 - 53 DRIVEWAY - REFER TO PLAN
 - 54 DRIVEWAY - REFER TO PLAN
 - 55 DRIVEWAY - REFER TO PLAN
 - 56 DRIVEWAY - REFER TO PLAN
 - 57 DRIVEWAY - REFER TO PLAN
 - 58 DRIVEWAY - REFER TO PLAN
 - 59 DRIVEWAY - REFER TO PLAN
 - 60 DRIVEWAY - REFER TO PLAN
 - 61 DRIVEWAY - REFER TO PLAN
 - 62 DRIVEWAY - REFER TO PLAN
 - 63 DRIVEWAY - REFER TO PLAN
 - 64 DRIVEWAY - REFER TO PLAN
 - 65 DRIVEWAY - REFER TO PLAN
 - 66 DRIVEWAY - REFER TO PLAN
 - 67 DRIVEWAY - REFER TO PLAN
 - 68 DRIVEWAY - REFER TO PLAN
 - 69 DRIVEWAY - REFER TO PLAN
 - 70 DRIVEWAY - REFER TO PLAN
 - 71 DRIVEWAY - REFER TO PLAN
 - 72 DRIVEWAY - REFER TO PLAN
 - 73 DRIVEWAY - REFER TO PLAN
 - 74 DRIVEWAY - REFER TO PLAN
 - 75 DRIVEWAY - REFER TO PLAN
 - 76 DRIVEWAY - REFER TO PLAN
 - 77 DRIVEWAY - REFER TO PLAN
 - 78 DRIVEWAY - REFER TO PLAN
 - 79 DRIVEWAY - REFER TO PLAN
 - 80 DRIVEWAY - REFER TO PLAN
 - 81 DRIVEWAY - REFER TO PLAN
 - 82 DRIVEWAY - REFER TO PLAN
 - 83 DRIVEWAY - REFER TO PLAN
 - 84 DRIVEWAY - REFER TO PLAN
 - 85 DRIVEWAY - REFER TO PLAN
 - 86 DRIVEWAY - REFER TO PLAN
 - 87 DRIVEWAY - REFER TO PLAN
 - 88 DRIVEWAY - REFER TO PLAN
 - 89 DRIVEWAY - REFER TO PLAN
 - 90 DRIVEWAY - REFER TO PLAN
 - 91 DRIVEWAY - REFER TO PLAN
 - 92 DRIVEWAY - REFER TO PLAN
 - 93 DRIVEWAY - REFER TO PLAN
 - 94 DRIVEWAY - REFER TO PLAN
 - 95 DRIVEWAY - REFER TO PLAN
 - 96 DRIVEWAY - REFER TO PLAN
 - 97 DRIVEWAY - REFER TO PLAN
 - 98 DRIVEWAY - REFER TO PLAN
 - 99 DRIVEWAY - REFER TO PLAN
 - 100 DRIVEWAY - REFER TO PLAN

PROJECT TITLE: PROPOSED MEDICAL OFFICE
PROJECT LOCATION: 7725 WEST CHISHOLM BLVD., SUITE 100, OVERLAND PARK, KS 66212
PROPOSER: GAMNERSDR, LLC
DESIGNER: PINNACLE ARCHITECTURAL STUDIO, INC.
DATE: 07/27/06
SCALE: 1" = 10'-0"

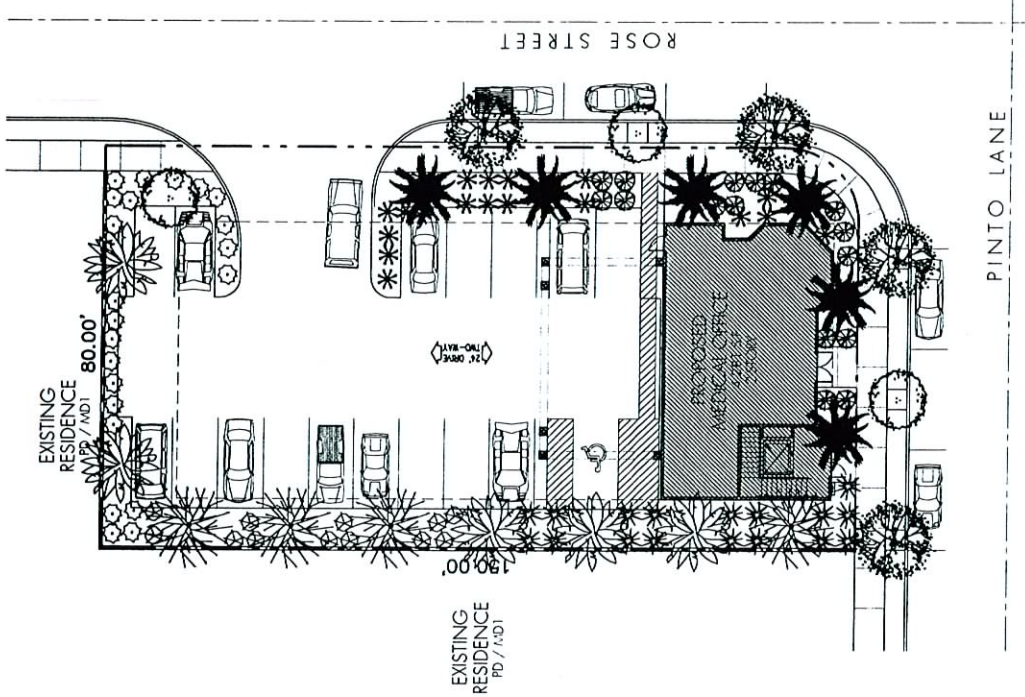
CURRENT ZONING CLASSIFICATION: PD (PARKING DEVELOPMENT)
PROPOSED ZONING CLASSIFICATION: PD (PARKING DEVELOPMENT)

PROPOSED MEDICAL OFFICE:
 7725 WEST CHISHOLM BLVD., SUITE 100, OVERLAND PARK, KS 66212
 7725 WEST CHISHOLM BLVD., SUITE 100, OVERLAND PARK, KS 66212
 7725 WEST CHISHOLM BLVD., SUITE 100, OVERLAND PARK, KS 66212

RECEIVED
 JUN 13 2006

RECEIVED

JUN 13 2006



1 LANDSCAPE PLAN
SCALE: 1" = 10'-0"

VAR-11052 VAR-10779
SDR-10777 07/27/06 PC
REVISED

LANDSCAPE PLANT LEGEND

SYMBOL	BOTANICAL NAME	COMMON NAME	SIZE	REMARKS
LARGE TREES				
	FRAXINUS VELUTINA	MOORESTO ASH	24" BOX	
	PROSOPIS SPECIES	MESQUITE	24" BOX	
	SPATHOGLOTTIS HANZLOFFIANA	GILBEEN PALM	15'	
ACCENT TREES				
	PRUNUS CAILERYANA	EVERGREEN PEACH	24" BOX	
	PRUNUS CERASIFERA	FLOWERING PEACH	24" BOX	

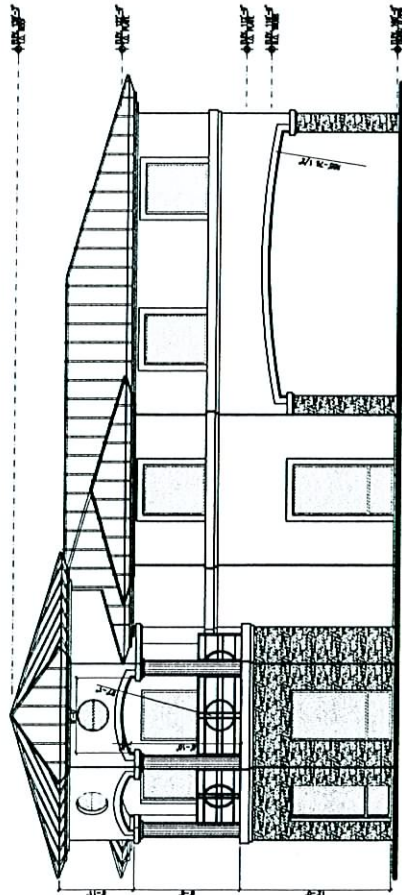
PINNACLE ARCHITECTURAL STUDIO, INC.
 2000 North Loop West, Suite 1000
 Houston, Texas 77019
 Phone: 713.261.1111 Fax: 713.261.1112
 Website: www.pinnaclestudio.com

MEDICAL OFFICE
 FOR GAMNERSIRI, LLC
 DESIGN REVIEW

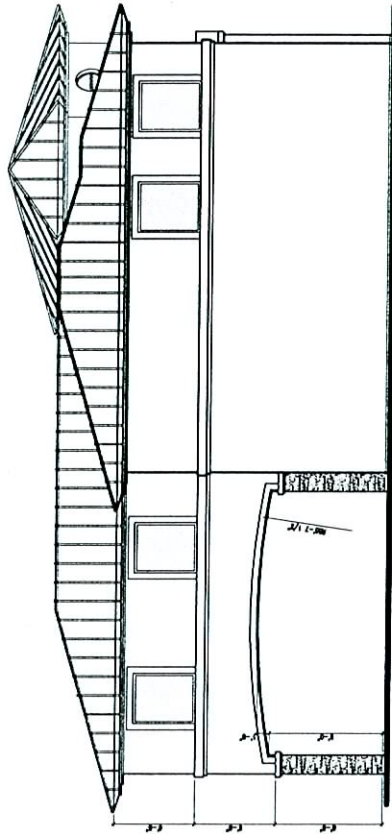
LANDSCAPE PLAN

[]

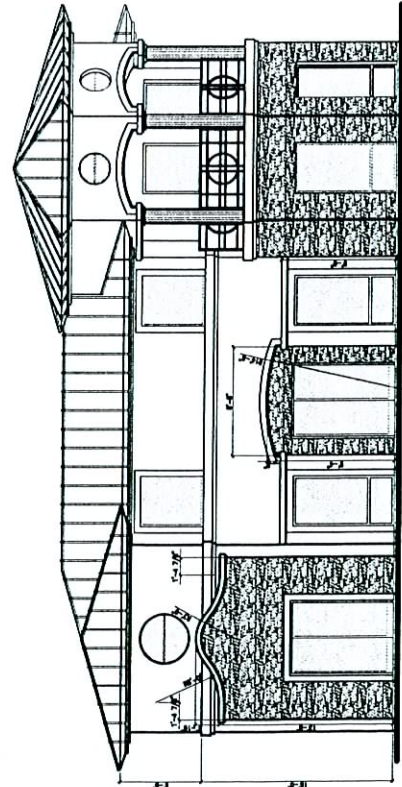
RECEIVED
JUN 13 2006



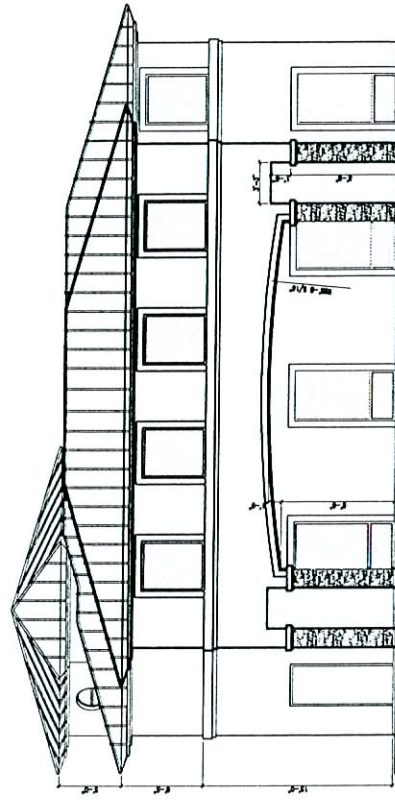
1 EAST ELEVATION
SCALE: 1/4" = 1'-0"



3 WEST ELEVATION
SCALE: 1/4" = 1'-0"



2 SOUTH ELEVATION
SCALE: 1/4" = 1'-0"



4 NORTH ELEVATION
SCALE: 1/4" = 1'-0"

PINNACLE ARCHITECTURAL STUDIO, INC.
DRAWN BY: [Name]
CHECKED BY: [Name]
DATE: [Date]
PROJECT: [Project Name]
ADDRESS: [Address]
CITY: [City]
STATE: [State]
ZIP: [ZIP Code]

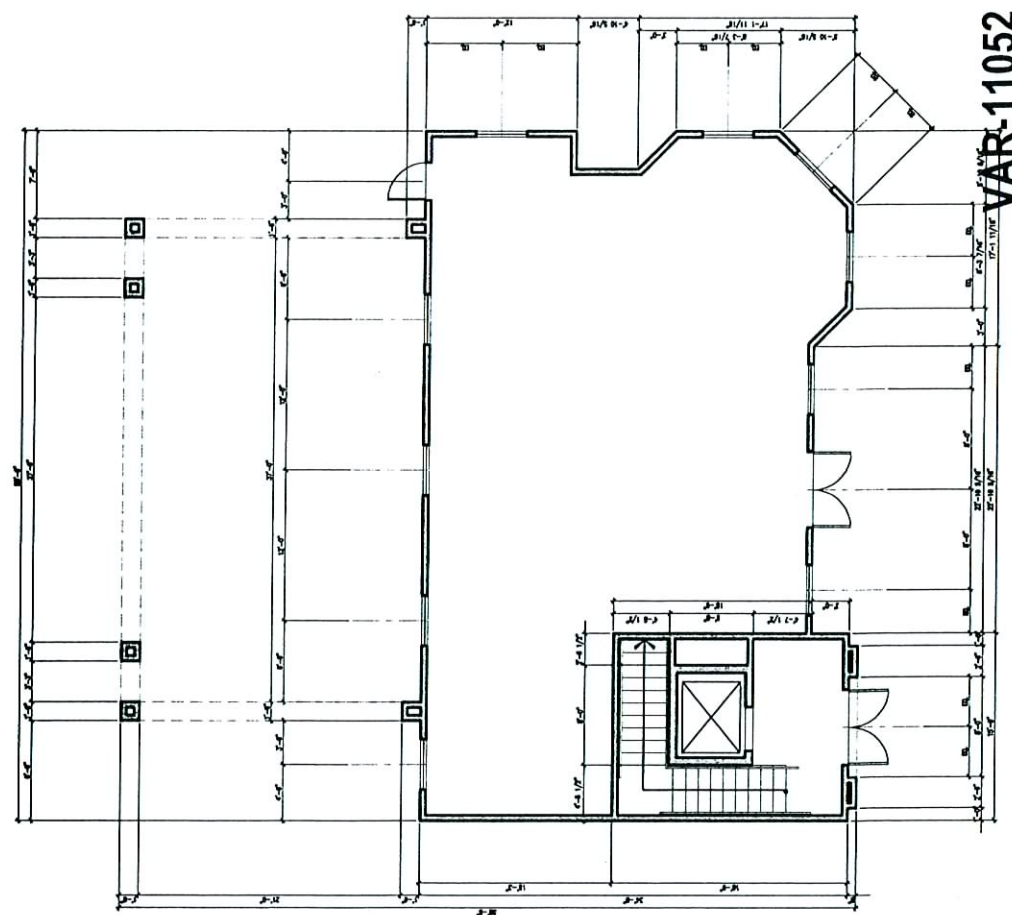
DESIGN REVIEW
MEDICAL OFFICE
FOR GAMNER/SRI, LLC
1000 WEST WASHINGTON AVENUE
DENVER, CO 80202
BUILDING 1 EXTERIOR ELEVATIONS

NO.	DATE	REVISION

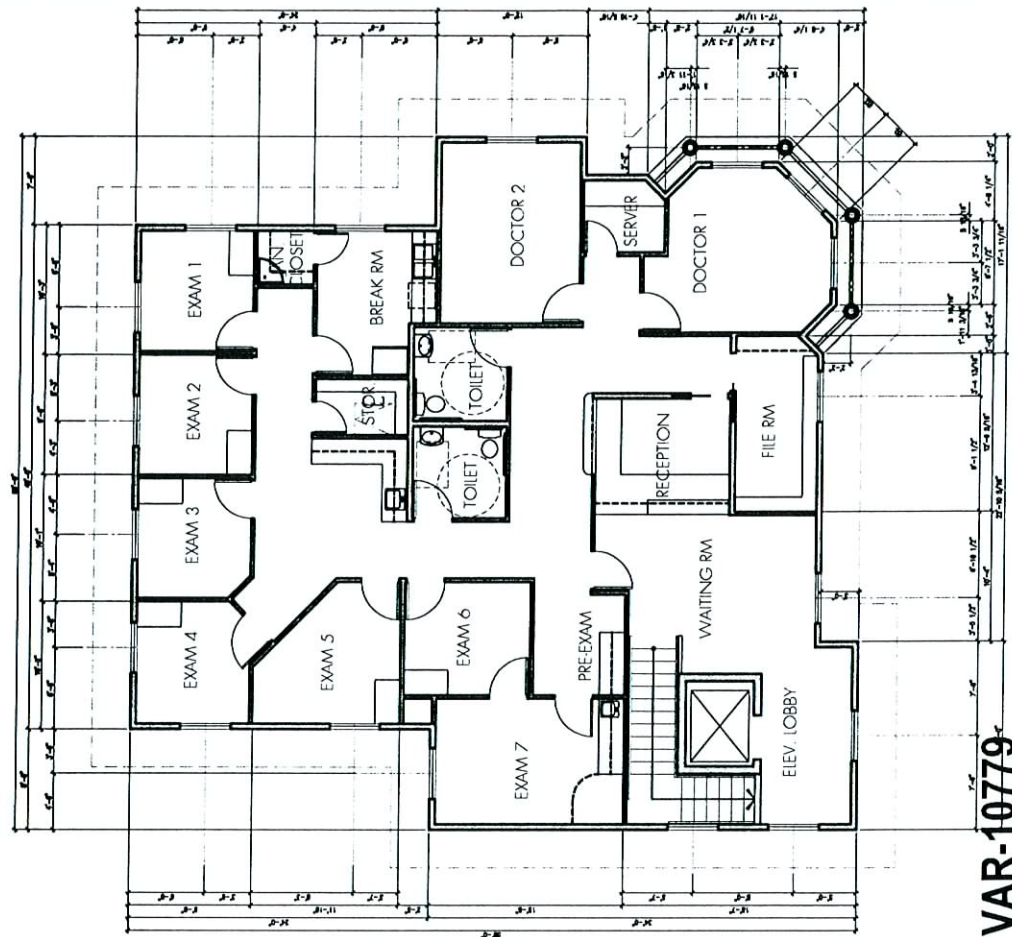
A4.1

VAR-11052 VAR-10779
SDR-10777 07/27/06 PC
REVISED

REVISIONS
 JUN 15 2006



1 FIRST FLOOR PLAN
 SCALE: 1/4" = 1'-0"



2 SECOND FLOOR PLAN
 SCALE: 1/4" = 1'-0"

Pinnacle Architectural Studio, Inc.
 2224 Peachtree Road, Suite 200
 Atlanta, Georgia 30309
 Phone: 404.252.1111
 Fax: 404.252.1112
 Email: info@pinnaclestudio.com

DESIGN REVIEW
 FOR GAMMENDSRL, LLC
 1000 Peachtree Street, N.E.
 Atlanta, Georgia 30309
 Phone: 404.252.1111
 Fax: 404.252.1112
 Email: info@pinnaclestudio.com

DATE	DESCRIPTION

NO.	DATE	DESCRIPTION

A2.1

SUHATTAI GAMNERDSIRI, M.D., F.A.C.C.

7135 W. Sahara Avenue, Suite 202
Las Vegas, NV 89117

Phone (702) 367-9300
Fax (702) 367-9400

July 11, 2006

City Of Las Vegas
Current Planning Department
731 S. Fourth Street
Las Vegas, NV 89101

Re: Certification Of Number Of required Parking Spaces For Gammedsiri Medical Office At 2000 Pinto Lane *SDR 10777 & VAR 10779*

To Whom It May Concern:

Parking regulations for the above development require 1 space per 200 square feet up to 2,000 sq. ft., and 1 space per 175 sq. ft. over 2,000. This is 10 spaces, for a total of 23 required spaces. The new building will need 15 spaces at most, and in order to get approval of the site plan as submitted, I attest to the following:

1. I currently have an authorized parking space at the Valley Hospital parking lot, and use that space as my primary parking space. Most of my time is spent at the Hospital. If I need to visit the office, I will walk there from the Hospital, since it is just across the street to the north, easy walking distance from the Hospital.
2. My office, on second floor of the proposed office building, will require a maximum of 8 parking spaces: 1 each for my assistant and a receptionist, and 1 for each of 6 patients (1 for each exam room).
3. I will place a lease restriction on the first floor space, allowing only tenants who require a maximum of 7 parking spaces. I will review all tenant improvement plans before submittal to the Building Department.

I am willing to agree in writing to the foregoing statements, and appreciate your consideration and approval.

Sincerely,



Suhattai Gamnerdsiri, M.D., F.A.C.C.

RECEIVED
JUL 14 2006