

SITE INFORMATION

ZONING: R-2

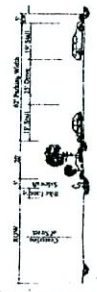
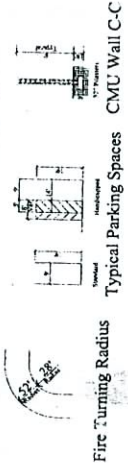
AREA (Approximate, to be verified)
Net Area: 7254 SF

SETBACKS
Front: 15'
Rear: 15'
Side: 5'
Corner Street Side: 24'-11"

BUILDING HEIGHT
Allowed: 24'-11"
Provided: 24'-11"

BUILDING COVERAGE
Allowed: 40%
Provided: 40%

BUILDING AREAS
PLAN A: 1850 SF
PLAN B: 5405 SF

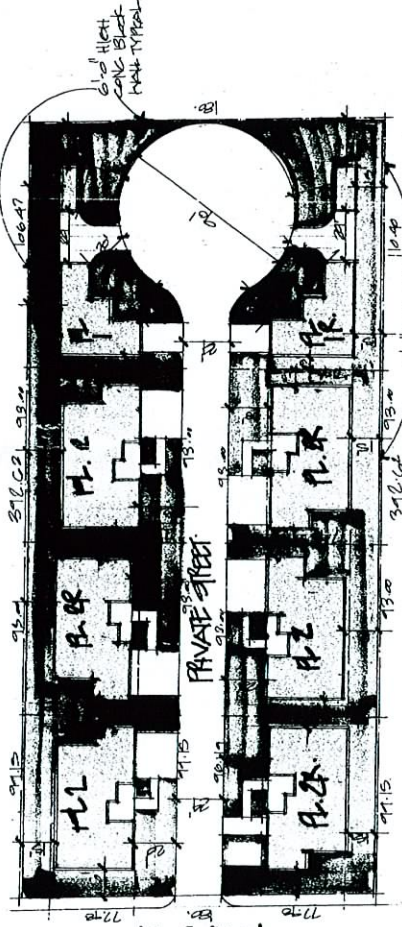


ZON-14796 VAR-14797
SDR-14795 08/10/06 PC

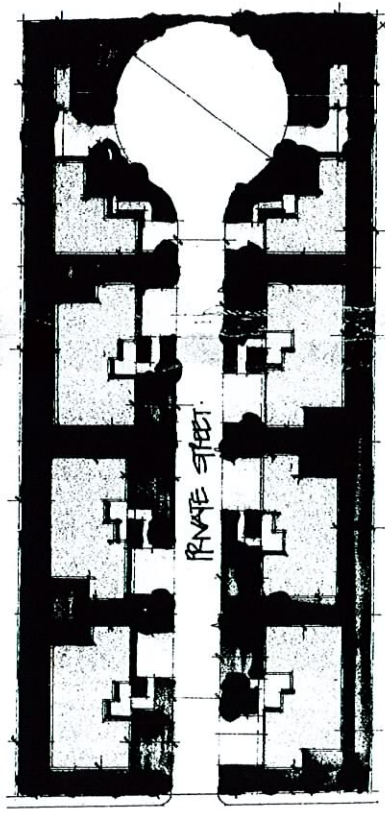
RECEIVED

JUN 28 2006

SDR-14795



SITE PLAN



LANDSCAPE PLAN

TANORAH PLACE

TREE / PLANT SCHEDULE

NO.	SYM.	SIZE	PLANT	QUANTITY	NOTES
1	(Symbol)	24" DBH	MODIFIED ALB	1	Minimum 10' height
2	(Symbol)	24" DBH	TRUMPET BERRY	1	Minimum 10' height
3	(Symbol)	24" DBH	MODIFIED ALB	1	Minimum 10' height
4	(Symbol)	24" DBH	MODIFIED ALB	1	Minimum 10' height
5	(Symbol)	24" DBH	MODIFIED ALB	1	Minimum 10' height
6	(Symbol)	24" DBH	MODIFIED ALB	1	Minimum 10' height
7	(Symbol)	24" DBH	MODIFIED ALB	1	Minimum 10' height
8	(Symbol)	24" DBH	MODIFIED ALB	1	Minimum 10' height
9	(Symbol)	24" DBH	MODIFIED ALB	1	Minimum 10' height
10	(Symbol)	24" DBH	MODIFIED ALB	1	Minimum 10' height