

GENERAL NOTES

1. All Streets shall be 24' wide (min)
2. Minimum size lot for 20x60' Trailer shall be 46' x 63' = 3174^{sq}
3. Laundry sites shall be within a 500' Radius of each trailer site.
4. Number of trailer sites = 91

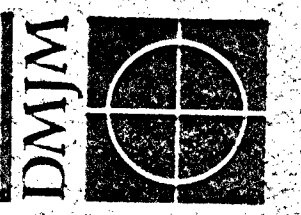
77

DRAWN BY C.S.	JOB NO. 6730-1-1
CHECKED BY [Signature]	SHEET NO. 1 of 1
APPROVED BY [Signature]	DATE 11-13-69

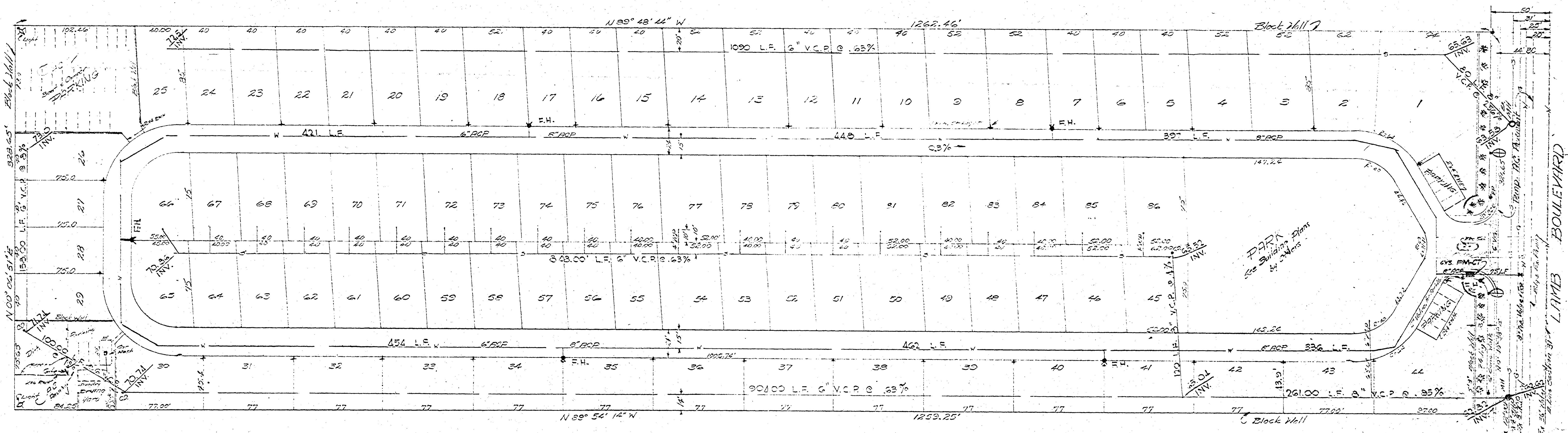
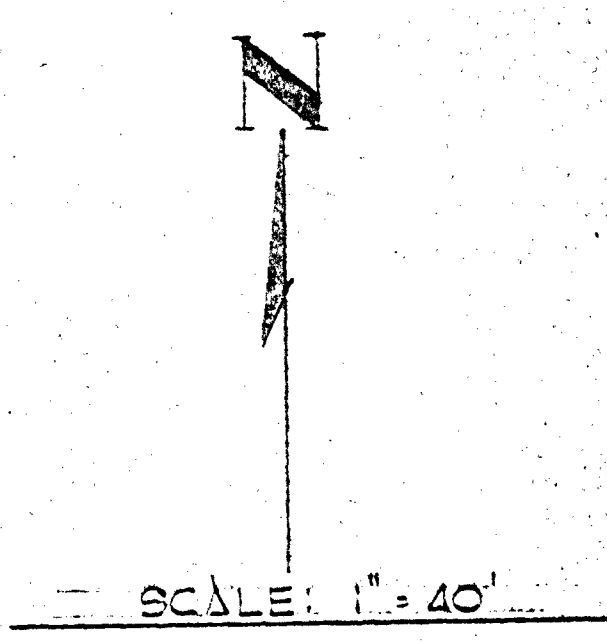
BERNARD OGRON

PREPARED FOR

DANIEL, MANN, JOHNSON, & MENDENHALL
 309 S. THIRD ST. • LAS VEGAS, NEVADA 89101 • TEL. 702-384-8881
 PLANNING & ARCHITECTURE & ENGINEERING & SYSTEMS & ECONOMICS

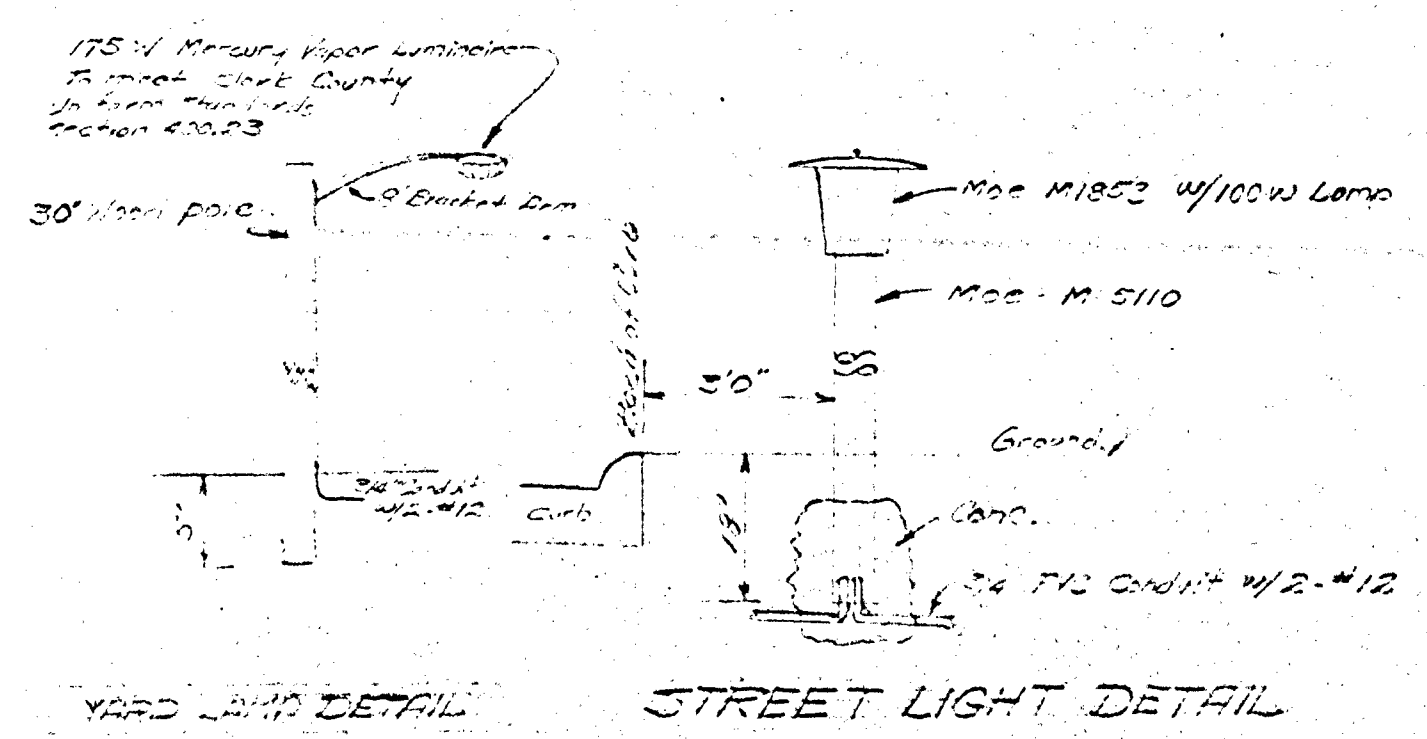


TAMITIAN ISLE



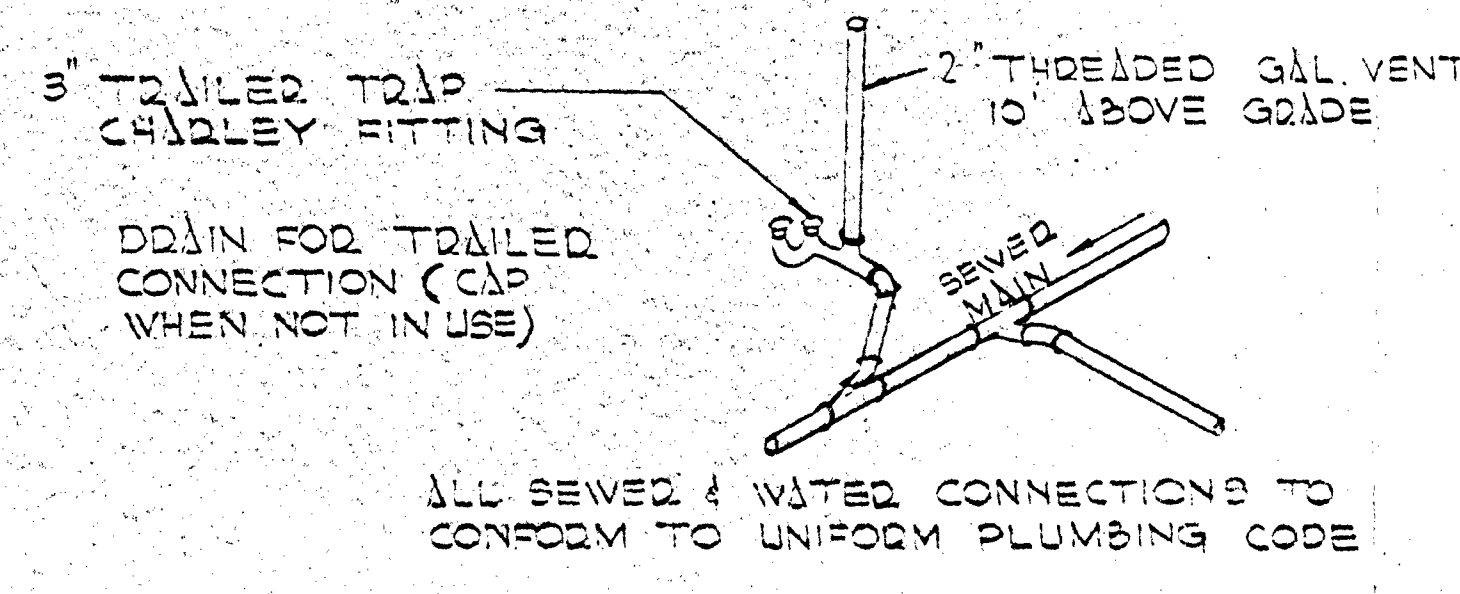
QUANTITY ESTIMATE

- 1 ea FM-OT (6x3) Water Meter - see spec. for details
- 875 lf 6" RCP Water
- 1718 lf 8" RCP Water
- 1 ea 8" Tee & Valve - see spec. for details
- 6 ea Fire Hydrant - Uniform Std. Draw # 34.08
- 1 ea Manhole - Uniform Std. Draw # 312.0 with 2' dia. cover
- 420 lf 4" VCP Sewer
- 3165 lf 6" VCP Sewer
- 441 lf 8" VCP Sewer
- 86 ea Utility Pad Assembly
- 502 lf Curb & Gutter (see detail)
- 5770 sq ft AC Pavement (see detail)
- 3922 sq ft Driveway Pavement (2" Asphalt w/ 6" Type II Gravel)
- 36120 sq ft Conc. Paving (see detail)
- 29 ea Street Light 100W Max. 1-1853 on M-5110 Post
- 3615 lf 6" Block Wall
- 13077 sq ft Parking Area (2" Asphalt w/ 6" Type II Gravel)
- 1000 sq ft Temp. Paving (Comb. Blk) 1/2" Thick
- 246 lf Curbed Gutter - Lamin. - Uniform Std. Draw # 320.1
- 2 ea Street Light - Lamin. - 600W Max. 1-1853 on M-5110 Post
- 2050 sq ft Sidewalk - Lamin. - 1/2" Type II Gravel Uniform Std. Draw # 340.3
- 324 lf Valley Gutter - Uniform Std. Draw # 340.43
- 8000 lf 2 1/2" (RNH) Precast Header
- 90 lf 6" High Clean Line Pipe w/ Gaps
- 2 ea 175W Yard Lamp (see detail)
- 3 ea 4" Sewer Cleanout
- 86 ea 2 1/2" Copper Water Service (from main to service pad)
- 1 ea 2" Tee & Valve (for Sprinkler System)

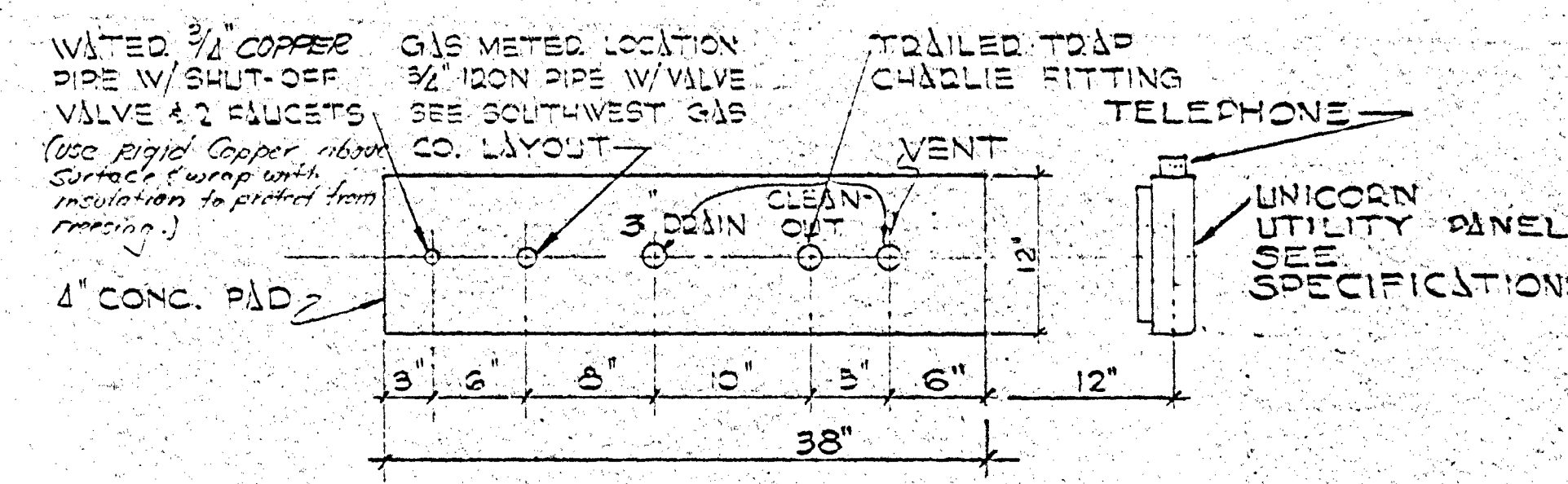


GENERAL NOTES

1. ALL 8" SEWER LINES TO BE LAID @ .4% MIN. 4" LINES TO BE LAID @ 1.0% MIN.
2. INSTALL 4" CLEAN-OUT @ EA. 100' IN ALL SEWER LINES AND AT ALL ANGLE POINTS OVER 45°.
3. ALL FIRE LINES TO BE INSTALLED WITHIN @ 15' EASEMENT TO VEGAS VALLEY WATER DISTRICT.
4. ALL 6" SEWER LINES TO BE LAID @ .63%



SEWER DETAIL
NO SCALE

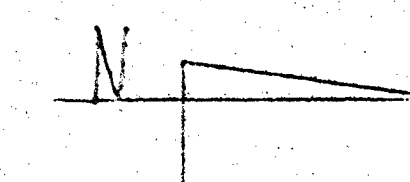
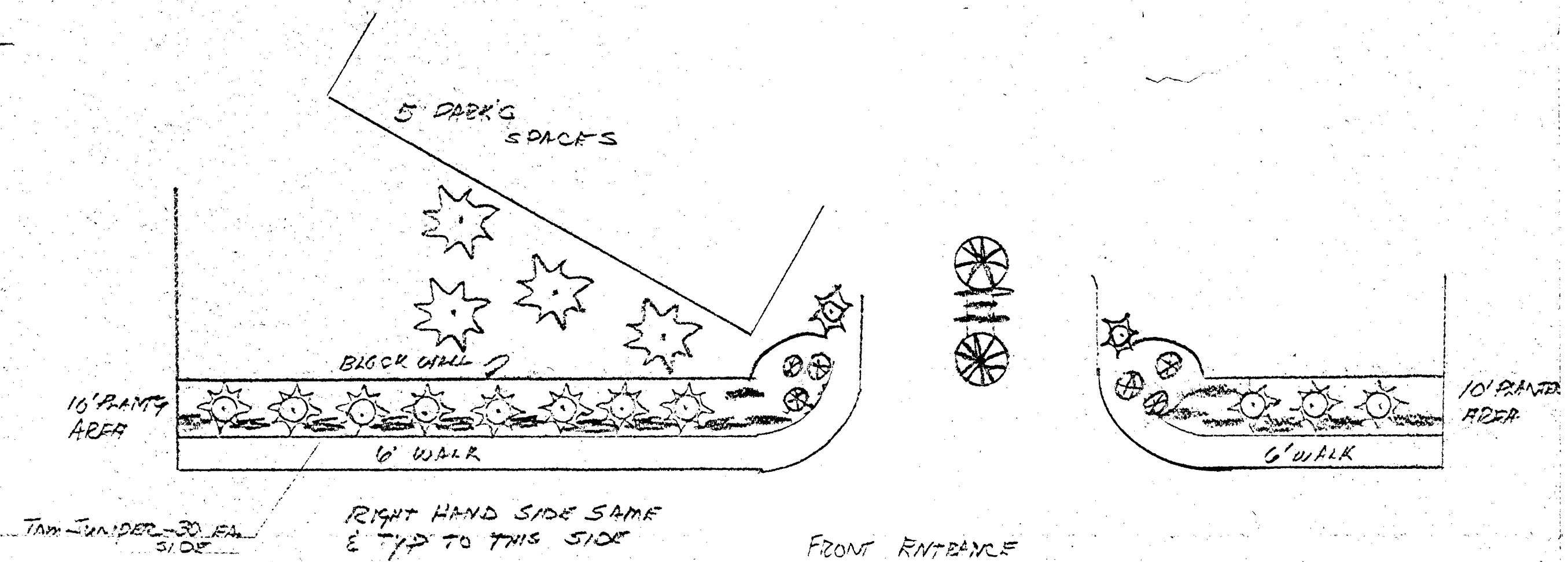
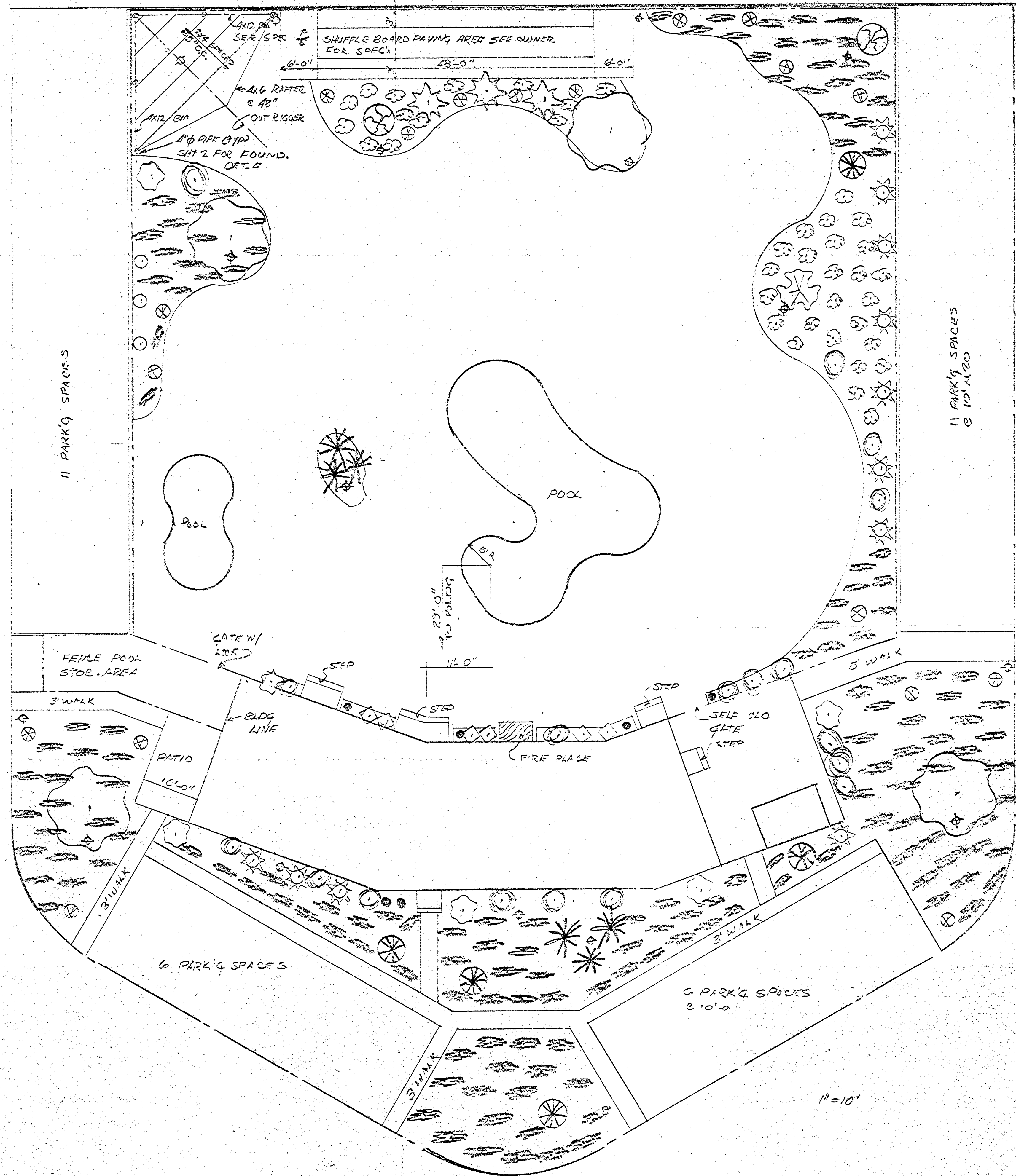


NOTE: INSTALLATION OF ALL SERVICES SHALL CONFORM TO UNIFORM PLUMBING CODE.

UTILITY PAD DETAIL
NO SCALE

REV. NO.	DESCRIPTION	BY	DATE	APPD.
REVISIONS				
CAUSEY SPITZ & ASSOCIATES				
215 E. OGDEN AVE. LAS VEGAS, NEV.				
PREPARED FOR				
BEDNARD & DOUGHERTY OGDEN				
APPROVED				
DAVID F. CAUSEY R.P.E. 1811			DATE	
DATE: 10-9-70		DES. CO. Spitz		SHT. 3
SCALE: 1" = 40'		DRN.		OF

77



KEY	BOT NAME	COMMON NAME	SIZE	QUAN.
	OLEA MANZANILLO	OLIVE TREE	36" BOT	4
	WASHINGTONIA ROBUSTA	MEXICAN FAN PALM	VAR. SIZE 48" TALL	
	PRUNUS THUNBERGI	JAP. BLANK PINK	15 GAL	2
	SUNDER CANENSIS SEA GREEN	SEA GREEN	5 GAL	11
	CHAMBEROPS HUMULIS	DWARF WAXY MYRTLE	5 GAL	7
	SUNDER CHINENSIS FORMOSA	HORTENSIA	5 GAL	20
	YUCCA PENDULA	YUCCA PENDULA	1 GAL	24
	WANDYNA DOMESTICA	HEMLOCK	5 GAL	18
	SUNDER JAPONICA TAMARICKIA	JAP. WEEPING CEDAR	1 GAL	238
	PADONARBUS MACROPHYLLA	JAP. YEW	5 GAL	6
	ERIOBOTRYA JAPONICA	JAP. PLUM	5 GAL	6
	WASHINGTONIA ROBUSTA	MEXICAN FAN PALM	5 GAL	1
	COTONEASTER QUINQUEPHYLLA	DWARF GREY COTONEASTER	1 GAL	38
	ARALIA SIBICADA	FATSIA	5 GAL	6
	CUPRESSUS SEMPERVIRENS	ITALIAN CYPRESS	5 GAL	3
PLANS DRAWN FOR MRS. BERNARD GIBSON				
BY: BOULDER HIGHWAY NURSERY				
DESIGN BY MARSHALL CLEGG 10-23-70				
TAHITIEN ISLE RESERVE HOME PARK				

FOR EACH MODER. SPACE 1 5 GAL FRUITLESS MULBERRY TOTAL 80
 ALL LAWN AREA TO BE PLANTED WITH PERENNIAL RYE GRASS - 150 00000000
 EXT. LIGHTING FIXTURE FURNISHED BY ELECTRICAL

77

REV. OCT 29-70
 SHEET 12 MC