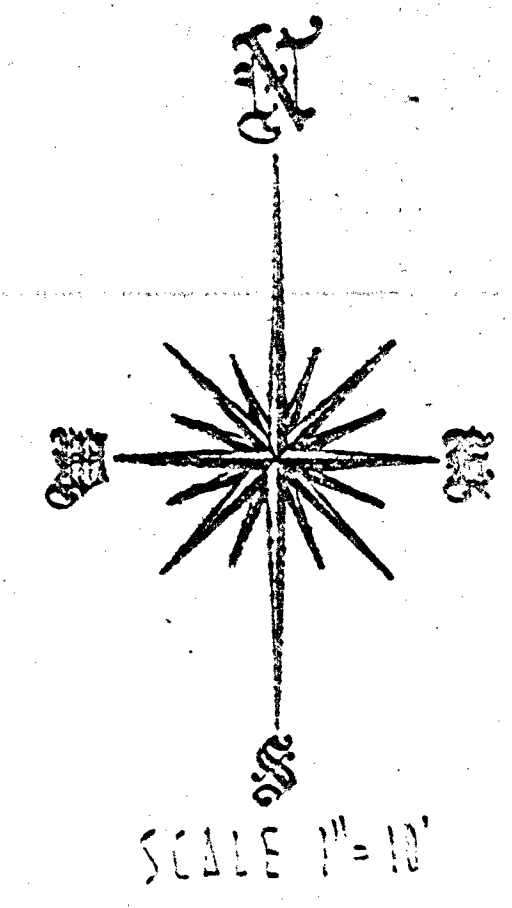
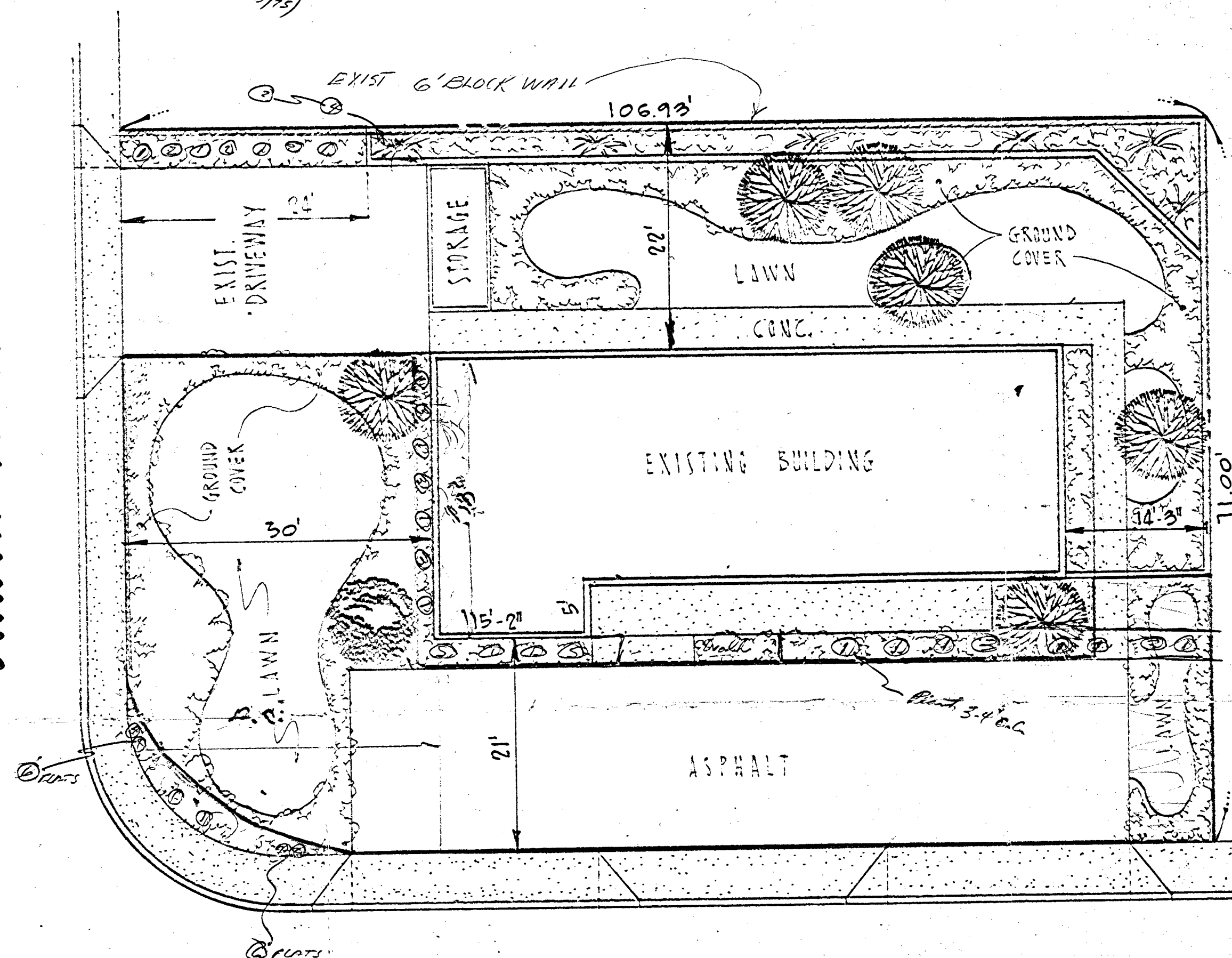


- ① Juniper Trees 5 gal
- ② Yucca Bushes 5 gal
- ③ Agave Plant 5 gal
- ④ Century Plant (Med. Tree) 5 gal
- ⑤ Italian Cypress 5 gal
- ⑥ GAZIA (MOCK-112/75)

SANTA PAULA DRIVE



PROPERTY LOCATED AT  
400 EAST SAHARA AVE.

SAHARA AVENUE

**PLOT PLAN OF LOT 1 PARADISE VILLAGE  
TRACT NO 3  
ANGIE WILSON**

*Approved by Frank Cartmill  
6/5/75*  
*Plot Plan*  
*Approved 6-5-70*

74

**VTA** NEVADA  
2209 PARADISE RD, LAS VEGAS L.D.  
W.O.