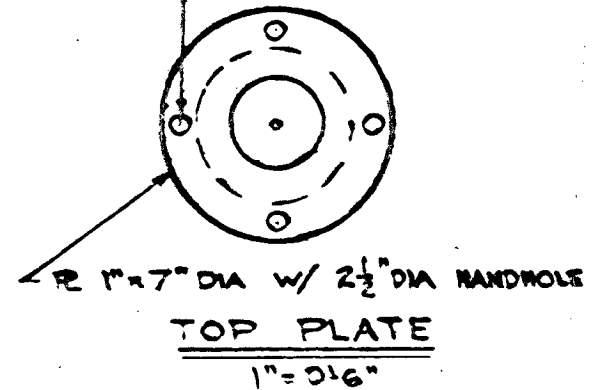


4 - $\frac{5}{16}$ "-11 TAP ON 6" B.C.
FURNISH 4 $\frac{5}{16}$ "-11 x $1\frac{1}{2}$ " Lg.
H.S. CAP SCREW W/LOCK
WASHER



FOUNDATION INSTALLATION

EXCAVATION

Drill hole in the ground and clean out loose dirt so that concrete can be placed against natural soil.

CONCRETE MIX

Plant or transit mix concrete shall conform to the following: minimum of six sacks of cement per cubic yard of concrete, 1" maximum aggregate, 28 day compressive strength of 2,000 psi.

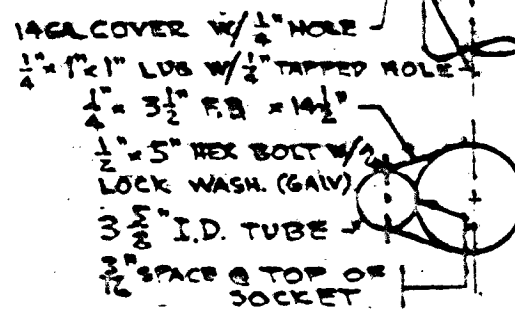
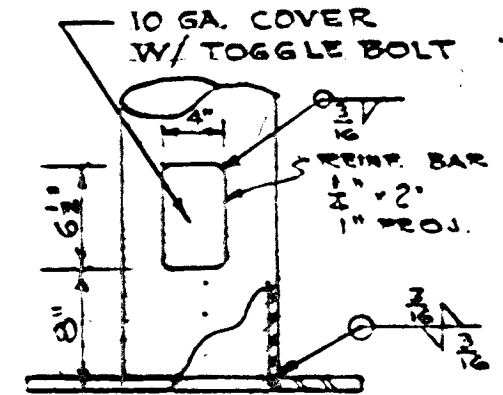
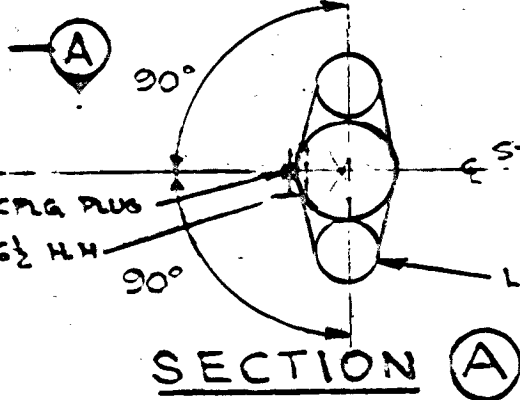
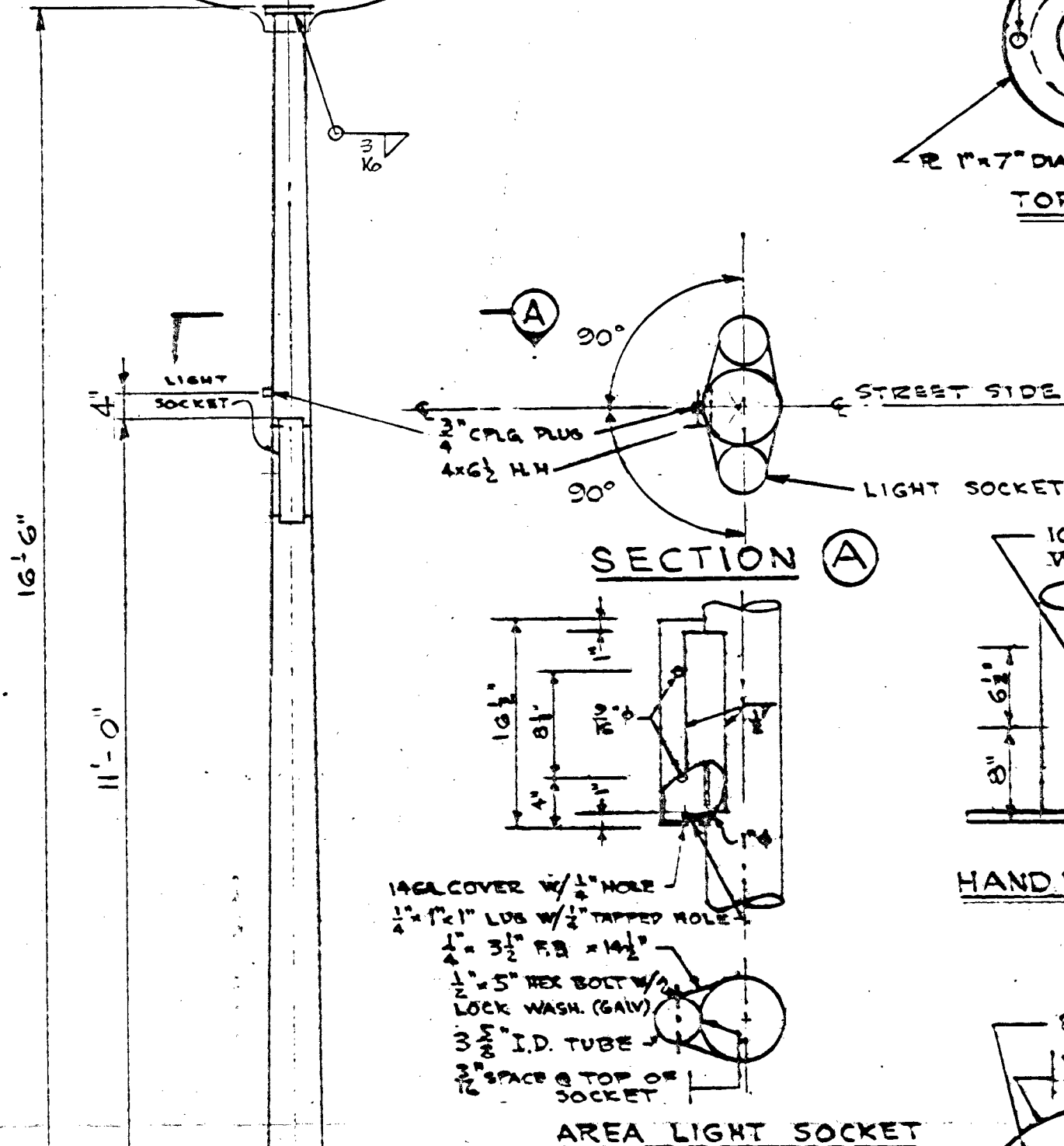
FORMING

A tolerance of 1/4" plus or minus, will be permitted in the location of forms.

BLACK COLOR CONCRETE

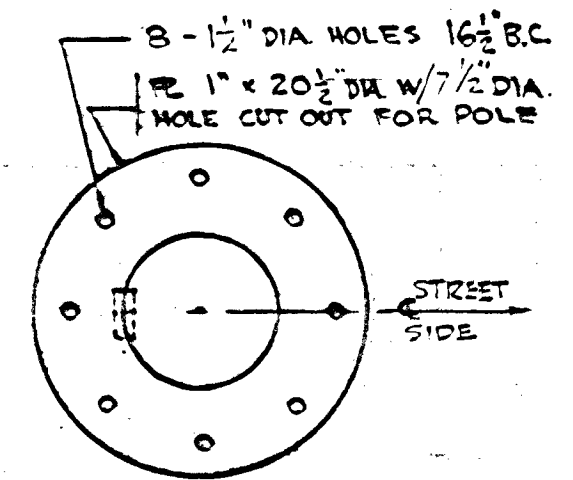
Sign pole base shall be finished dark color as follows: mechanically mix 1-1/2 pounds (1 gallon dry mix) regular uncompressed iron-oxide black to one sack of cement to 1 sack of plaster sand. Trowel this mixture on surfaces a minimum of 1/4" thick as quickly as forms can be removed.

Surfaces shall be hard smooth steel trowel finish.

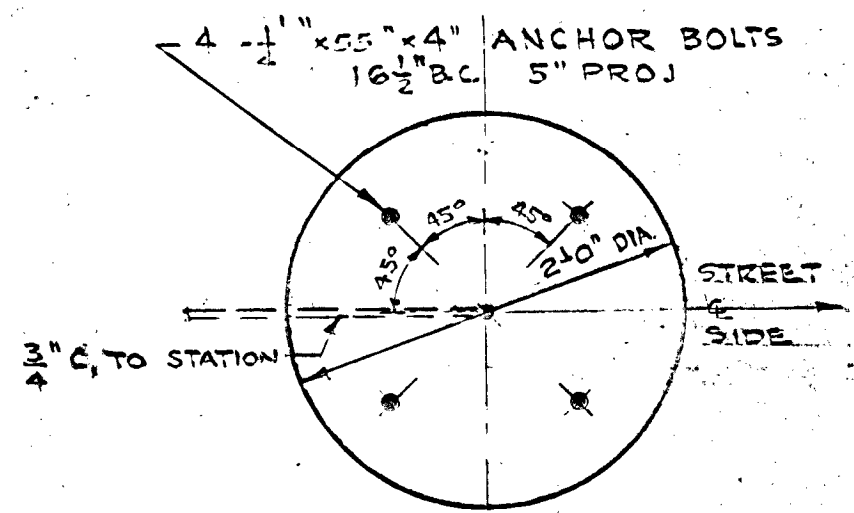


HAND HOLE W/ COVER
1" = 1'-0"

AREA LIGHT SOCKET
1" = 1'-0"



BASE PLATE
1" = 1'-0"



ANCHOR BOLT LAYOUT
1" = 1'-0"

NOTES

1. THE POLE TYPE CONCRETE FOUNDATION SHOWN FOR THIS SIGN & POLE WILL SUPPORT A # 276 OR # 376 BALL SIGN (6" DIA. OR 7'-6" DIA.) ON TOP OF POLES UP TO AND INCLUDING 28'-6" IN HEIGHT WITH A WIND LOAD OF 30 P.S.F.
2. FOR INSTALLATIONS REQUIRING A SHALLOW FOUNDATION USE SPEC 69 SHT. 2.
3. REF. DWG. SPEC 66 FOR POLE FABRICATION & CALCULATIONS.

73

20 Knowles RCE 8077 Calif.

SIGN NO 376 STRAIGHT POLE (H-6-b)

THIS DWG. SUPERSEDES DWG. SAME NO. DATED 6-16-65.

REVISED 7-1-66



73

N 1/2 NW 1/4 SEC. 28 T20S, R61E

STREET