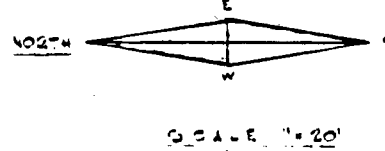


- LEGEND**
- NEW CONTOUR
 - EXISTING CONTOUR
 - NEW A.C. PAVING
 - PROPERTY LINE
 - SLOPE FOR DRAINAGE
 - CONCRETE CURB
 - CONTROL POINT
 - EXISTING SEWER LINE
 - EXISTING WATER LINE
 - CONCRETE WALL

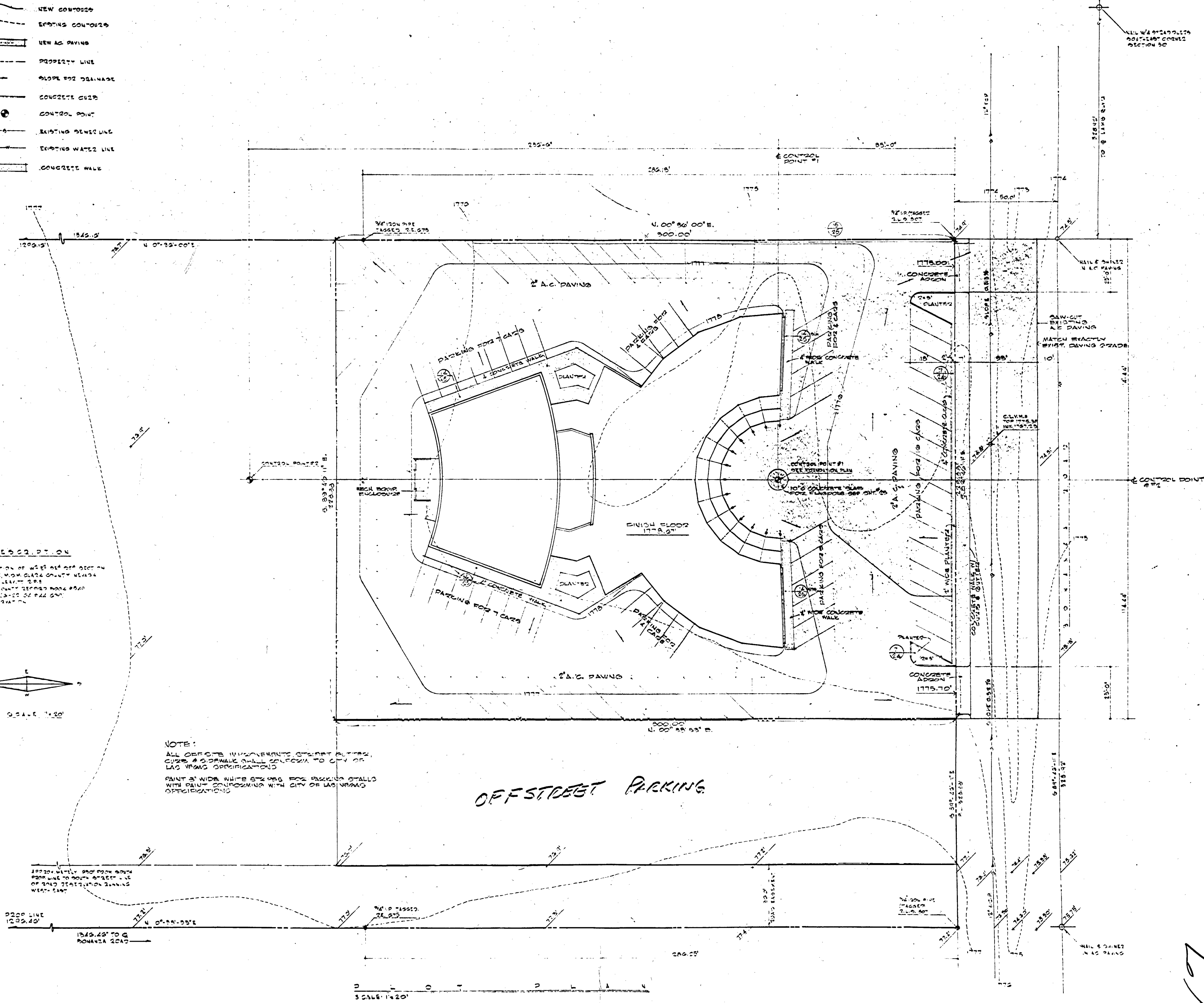
LEGAL DESCRIPTION

SOUTHEAST CORNER OF WEST 41st STREET IN
 TO TOWN, 24th, FROM CLARK COUNTY NEVADA
 PLATS 107, 108 & 111, 112, 113
 REFER TO CLARK COUNTY DEPT. OF PUBLIC WORKS
 FOR THE MOST RECENT RECORD OF THE ROAD
 AND ROAD DESIGNATION.



NOTE:
 ALL OFFSITE IMPROVEMENTS STREET CURBS,
 CURBS & SIDEWALK SHALL CONFORM TO CITY OF
 LAS VEGAS SPECIFICATIONS.
 PAINT 3' WIDE WHITE STRIPES FOR PARKING STALLS
 WITH PAINT CONFORMING WITH CITY OF LAS VEGAS
 SPECIFICATIONS.

OFFSTREET PARKING

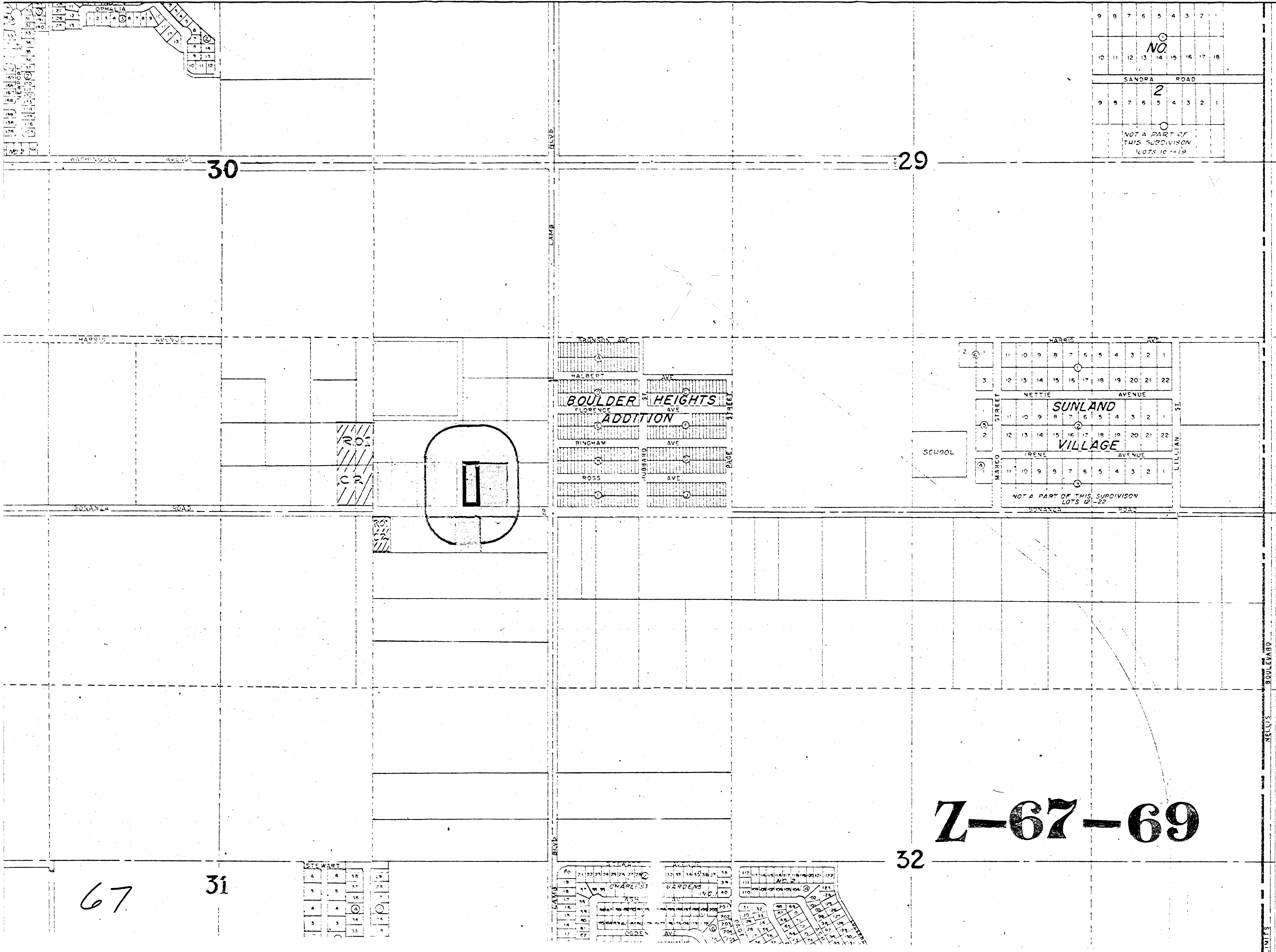


SCALE: 1/4" = 20'

67

67

PLOT PLAN	INTERNATIONAL BROTHERHOOD OF ELECTRICAL WORKERS BUILDING	REVISIONS	DATE	BY
	LAS VEGAS	NEVADA		
SHEET NO.	JACK MILLER AND ASSOCIATES AIA ARCHITECTS ENGINEERS			
1	THOMAS A. TURNER STRUCTURAL ENGINEER			
	522 EAST TWIN AVENUE LAS VEGAS NEVADA			



9	8	7	6	5	4	3	2	1
NO.								
10	11	12	13	14	15	16	17	18
SANDRA ROAD								
2								
9	8	7	6	5	4	3	2	1
NOT A PART OF THIS SUBDIVISION LOTS 10-19								

2	1	11	10	9	8	7	6	5	4	3	2	1
NETTIE AVENUE												
3	12	13	14	15	16	17	18	19	20	21	22	
SUNLAND VILLAGE												
4	11	10	9	8	7	6	5	4	3	2	1	
RENE AVENUE												
5	12	13	14	15	16	17	18	19	20	21	22	
MARCOS STREET												
6	11	10	9	8	7	6	5	4	3	2	1	
NOT A PART OF THIS SUBDIVISION LOTS 12-22												

30

29

32

31

67

Z-67-69

6	6	18	9
5	5	17	7A
4	4	16	7
3	3	14	5
2	2	13	4

30	21	22	23	24	25	26	27	28	29	30	31	32
STEWART AVENUE												
19	18	17	16	15	14	13	12	11	10	9	8	7
ASH AVENUE												
18	17	16	15	14	13	12	11	10	9	8	7	6
CYPRESS AVENUE												
17	16	15	14	13	12	11	10	9	8	7	6	5
CYPRESS AVENUE												
16	15	14	13	12	11	10	9	8	7	6	5	4
CYPRESS AVENUE												
15	14	13	12	11	10	9	8	7	6	5	4	3
CYPRESS AVENUE												
14	13	12	11	10	9	8	7	6	5	4	3	2
CYPRESS AVENUE												
13	12	11	10	9	8	7	6	5	4	3	2	1
CYPRESS AVENUE												

LIMITS BULLYARD