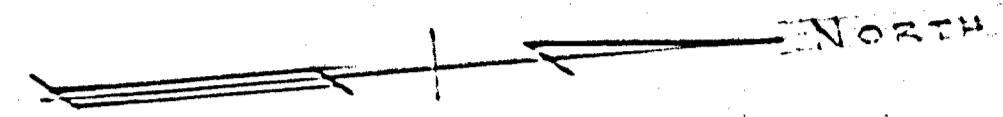


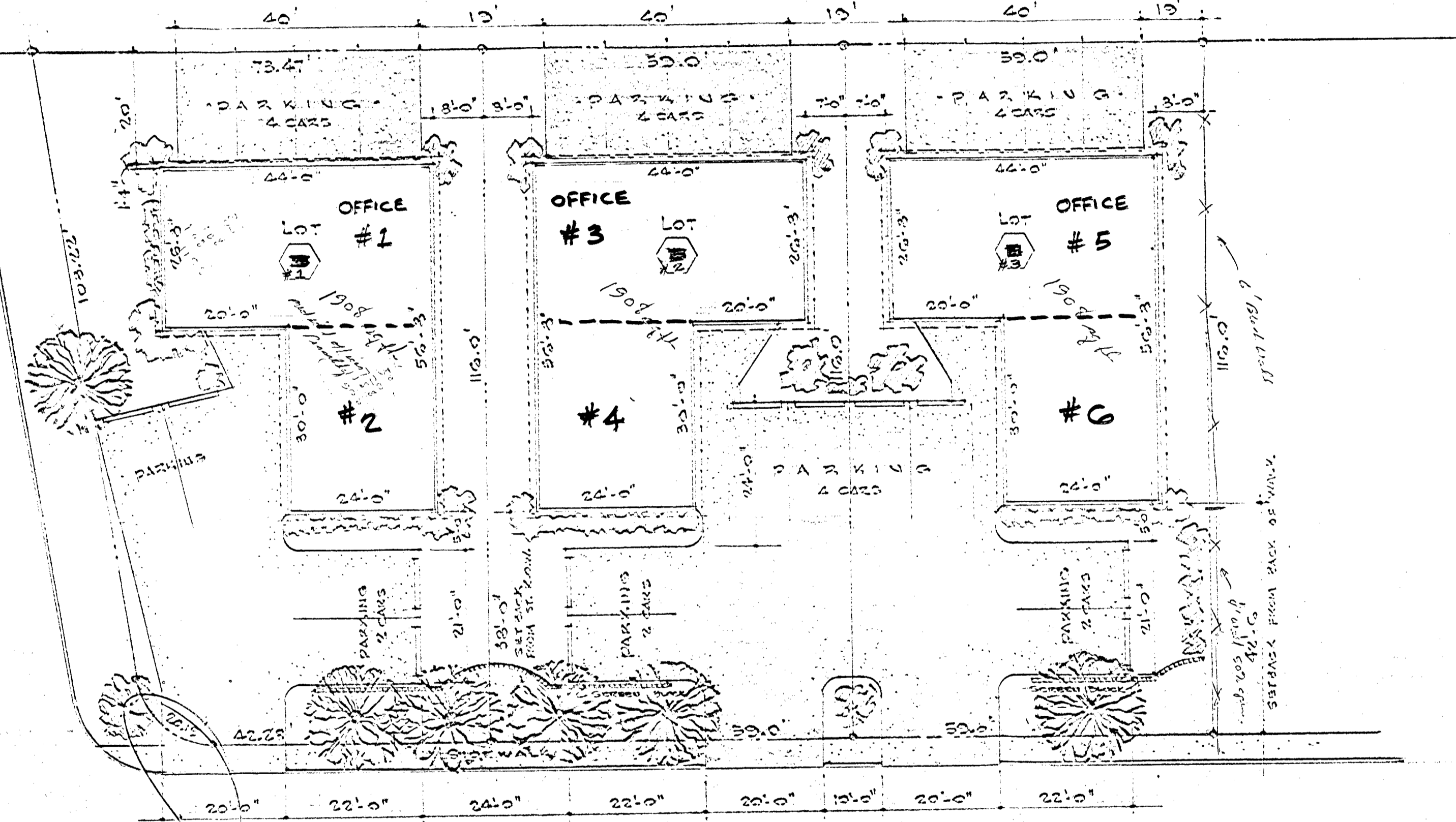
LAS - VEGAS - BLVD.



COMMERCIAL PROPERTY

OAKLEY ROAD

20' LAVE

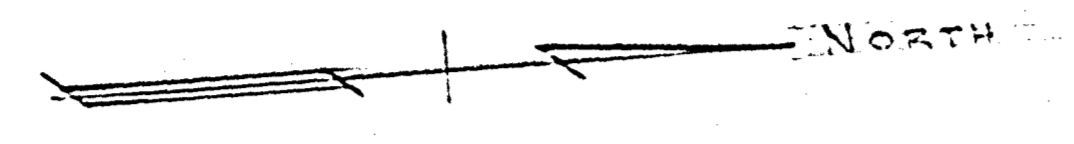


BEXFORD PLACE

67

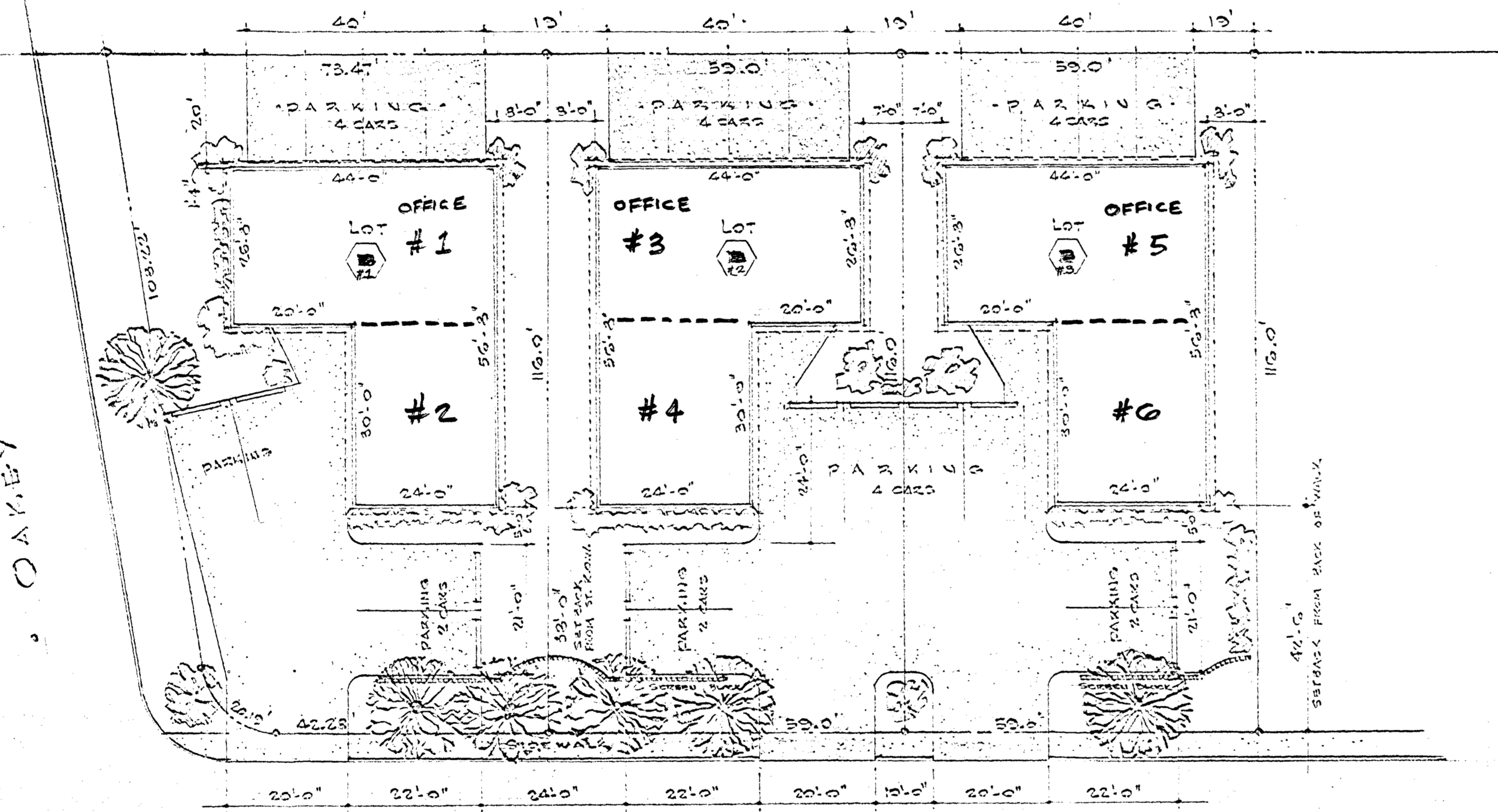
PLAT OF LOTS #1-6		
PLAT OF PARADISE GROVE, LAS VEGAS, NEV.		
SCALE: 1/4"=1'-0"	APPROVED BY:	DRAWN BY: S.M.C.
DATE: 8-22-1965		REVISED:
OWNERS: BERNARD ZELON & EDWARD KALKER		
DRAWING NUMBER		1 OF 1

- LAS - VEGAS - BLVD. -

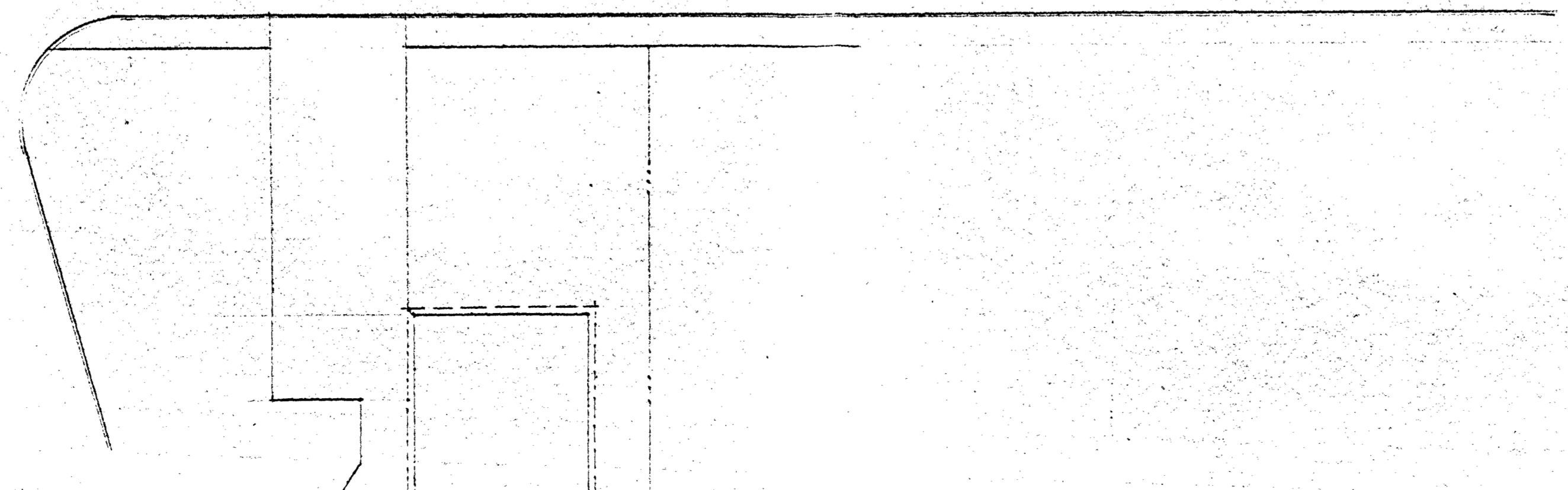


- C O M M E R C I A L - P R O P E R T Y -

20' LAVE
OAKLEY ROAD



BEXFORD PLACE



67

2-67-65

PLAT OF LOTS #14, 15 & 16		PLAT OF PARADISE GROVE, LAS VEGAS, NEV.	
SCALE: 1/4" = 1'-0"	APPROVED BY:	DRAWN BY: G.M.C.	
DATE: SEP. 29, 1965	REVISED:	OWNERS: BERNARD ZELON & EDWARD WALKER	
DRAWING NUMBER:		: OF :	

