

BALZAR AVENUE													60.00	55.31		
16	15	14	13	12	11	10	9	8	7	6	5	4	3	2	10.15	1
31	32	33	34	35	36	37	38	39	40	41	42	43	44	45	101.15	46
61.00			61.00	60.50				60.50	60.00					60.00	56.19	50

LAWRY AVE.													61.25	55.0		
62	61	60	59	58	57	56	55	54	53	52	51	50	49	48	98.00	47
85	86	87	88	89	90	91	92	93	94	95	96	97	98	99	58.00	100
															61.25	155.37

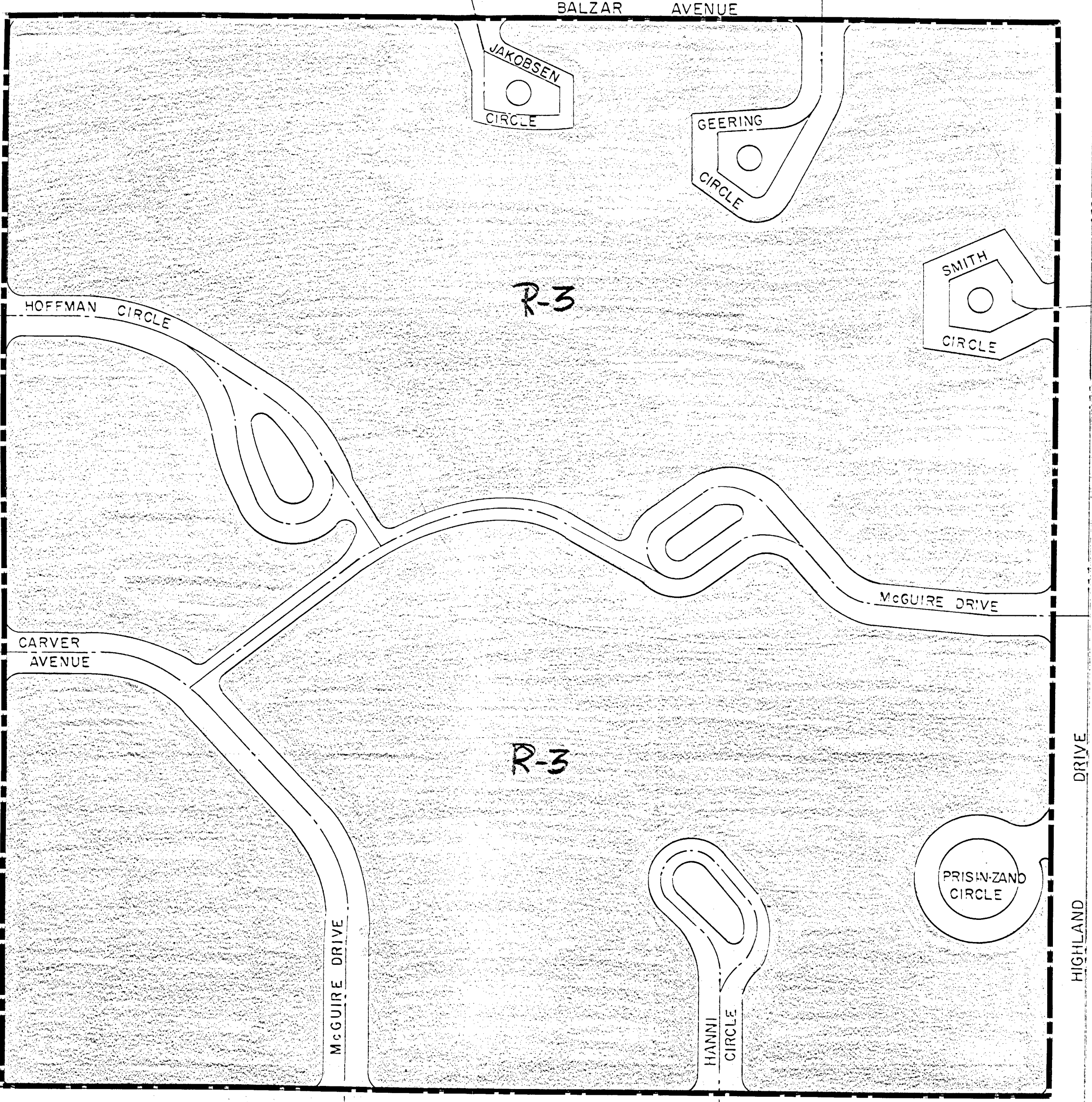
HASSEL AVE.													60.00	55.00		
116	115	114	113	112	111	110	109	108	107	106	105	104	103	102	100.00	101
134	135	136	137	138	139	140	141	142	143	144	145	146	147	148	100.00	149
															60.00	55.38

CARVER AVENUE													60.00	55.04		
164	163	162	161	160	159	158	157	156	155	154	153	152	151	150	100.00	150
165	166	167	168	169	170	171	172	173	174	175	176	177	178	179	100.00	180
75.00															60.00	55.47

HART AVE													61.25	55.00		
196	195	194	193	192	191	190	189	188	187	186	185	184	183	182	98.00	181
															61.25	70.18

ALLEY													60.00	55.00		
204	205	206	207	208	209	210	211	212	213	214	215	216	217	218	100.00	219
															60.00	60.00

COLLEGE AVENUE													60.00	55.00
----------------	--	--	--	--	--	--	--	--	--	--	--	--	-------	-------



COLLEGE HEIGHTS NO. 2
FEDERAL HOUSING

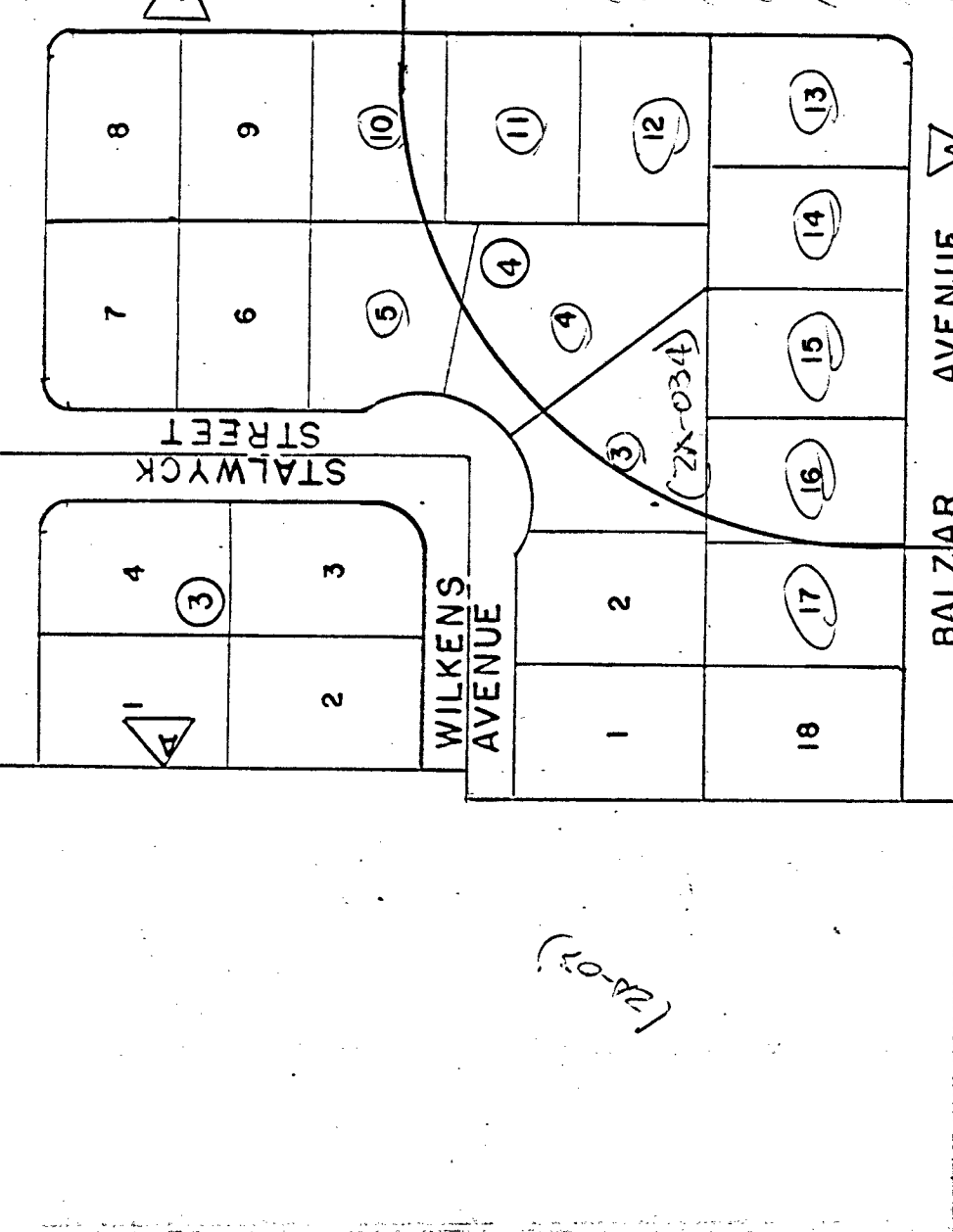
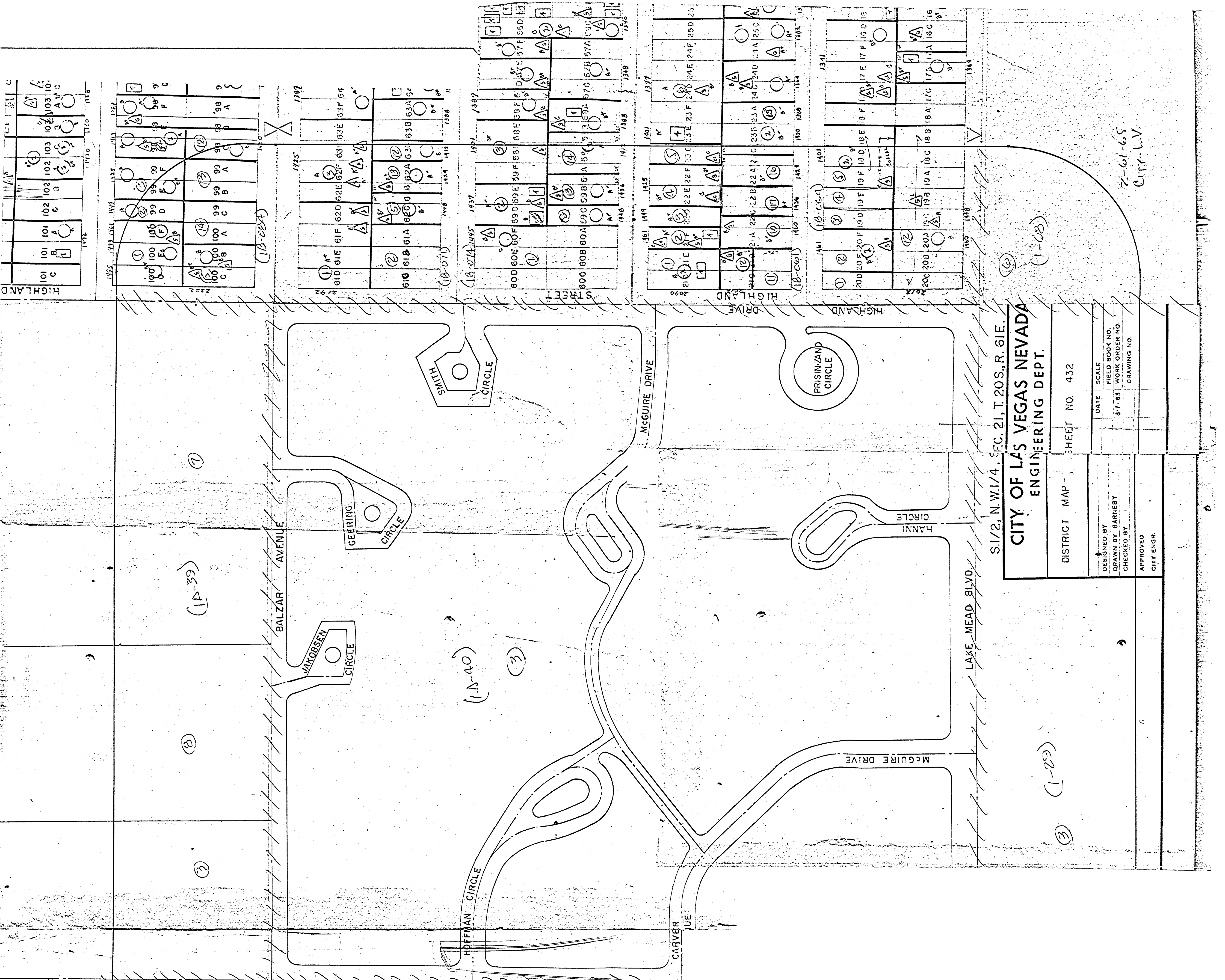
S. 1/2, N.W. 1/4, SEC. 21, T. 20S., R. 61E.

CITY OF LAS VEGAS NEVADA
ENGINEERING DEPT.

DISTRICT MAP - SHEET NO. 432

DESIGNED BY	DATE	SCALE
DRAWN BY BARNEY	8-7-63	FIELD BOOK NO.
CHECKED BY		WORK ORDER NO.
APPROVED		DRAWING NO.
CITY ENGR.		

61



10	9	8	7	6	5	4	3	2	1
60.50	60.50	60.50	60.00	55.31	55.31	55.31	55.31	55.31	55.31
37	38	39	40	41	42	43	44	45	46
60.50	60.00	60.00	60.00	60.00	60.00	60.00	60.00	60.00	60.00
56	55	54	53	52	51	50	49	48	47
61.25	61.25	61.25	61.25	61.25	61.25	61.25	61.25	61.25	61.25
91	92	93	94	95	96	97	98	99	100
61.25	61.25	61.25	61.25	61.25	61.25	61.25	61.25	61.25	61.25
110	109	108	107	106	105	104	103	102	101
60.00	60.00	60.00	60.00	60.00	60.00	60.00	60.00	60.00	60.00
140	141	142	143	144	145	146	147	148	149
60.00	60.00	60.00	60.00	60.00	60.00	60.00	60.00	60.00	60.00

S. 1/2, N.W. 1/4, SEC. 21, T. 20S., R. 61E.

CITY OF LAS VEGAS NEVADA
ENGINEERING DEPT.

DISTRICT MAP - SHEET NO 432

DESIGNED BY
DRAWN BY BARNEY
CHECKED BY
APPROVED
CITY ENGR.

DATE SCALE
87-83 FIELD BOOK NO.
WORK ORDER NO.
DRAWING NO.

2-61-65
CITY-L.V.

(1-29)
(3)

(1A-39)
(7)

(1A-40)
(3)

(1-28)

(1B-28)

(1B-27)

(1A-24)

(1B-26)

(1B-25)

(1B-24)

(1B-23)

(1B-22)

(1B-21)

(1B-20)

(1B-19)

(1B-18)

(1B-17)

(1B-16)

(1B-15)

(1B-14)

(1B-13)

(1B-12)

(1B-11)

(1B-10)

(1B-9)

(1B-8)

(1B-7)

(1B-6)

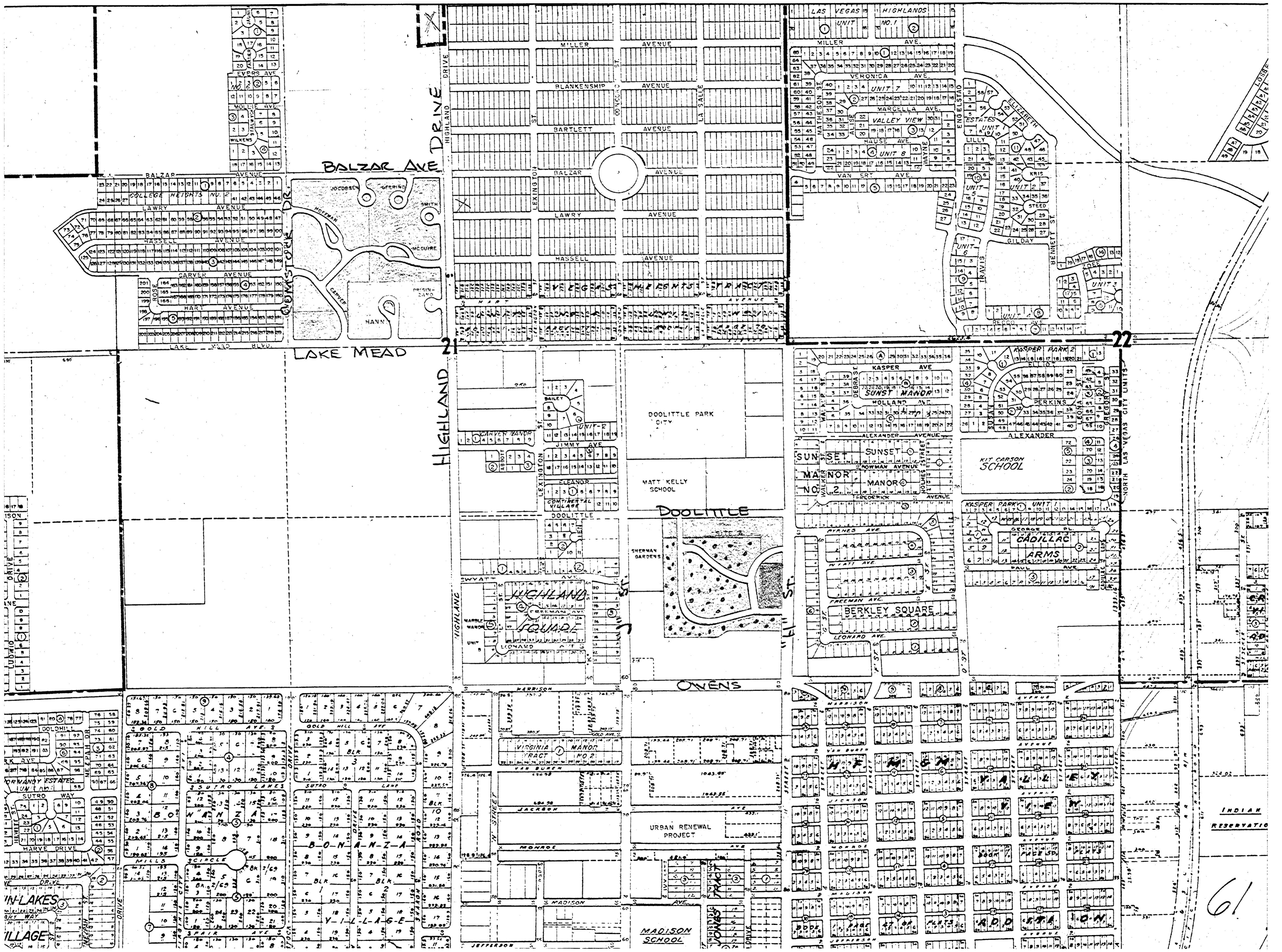
(1B-5)

(1B-4)

(1B-3)

(1B-2)

(1B-1)



BALZAR AVE

LAKE MEAD

HIGHLAND

DOOLITTLE PARK CITY

MATT KELLY SCHOOL

DOOLITTLE

SHERMAN GARDENS

ONENS

SUNSET

MANOR

MANOR

BERKLEY SQUARE

KIT CARSON SCHOOL

CADILLAC

ARMS

URBAN RENEWAL PROJECT

MADISON SCHOOL

INDIAN RESERVATION

61