



THRIFTMART & SKAGGS

N.C. 1/3/63

800

709 711-1/2 713-15 803-5-7

704 706 714 800 804

1st NAT'L BANK

N.C. 7-8-64

701

2400

2228 1/2

C-1

CAFE  
N.C. 6/14/60  
2390

C-V

R-E

N.C. 5/31/67  
Mc. Don.

R-E

2230

2228

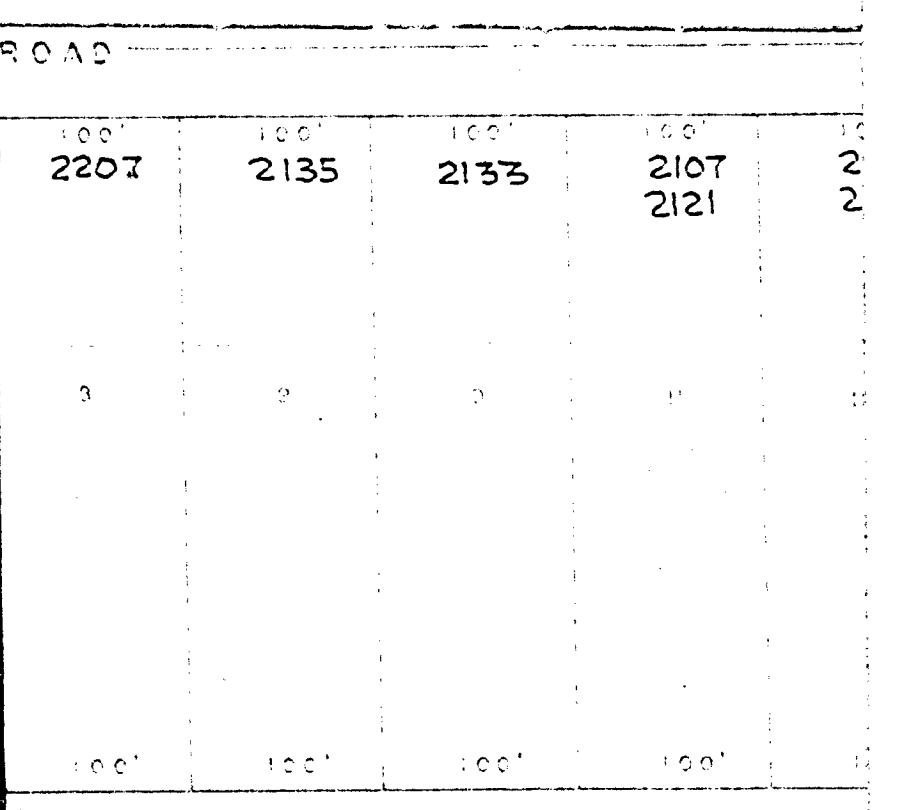
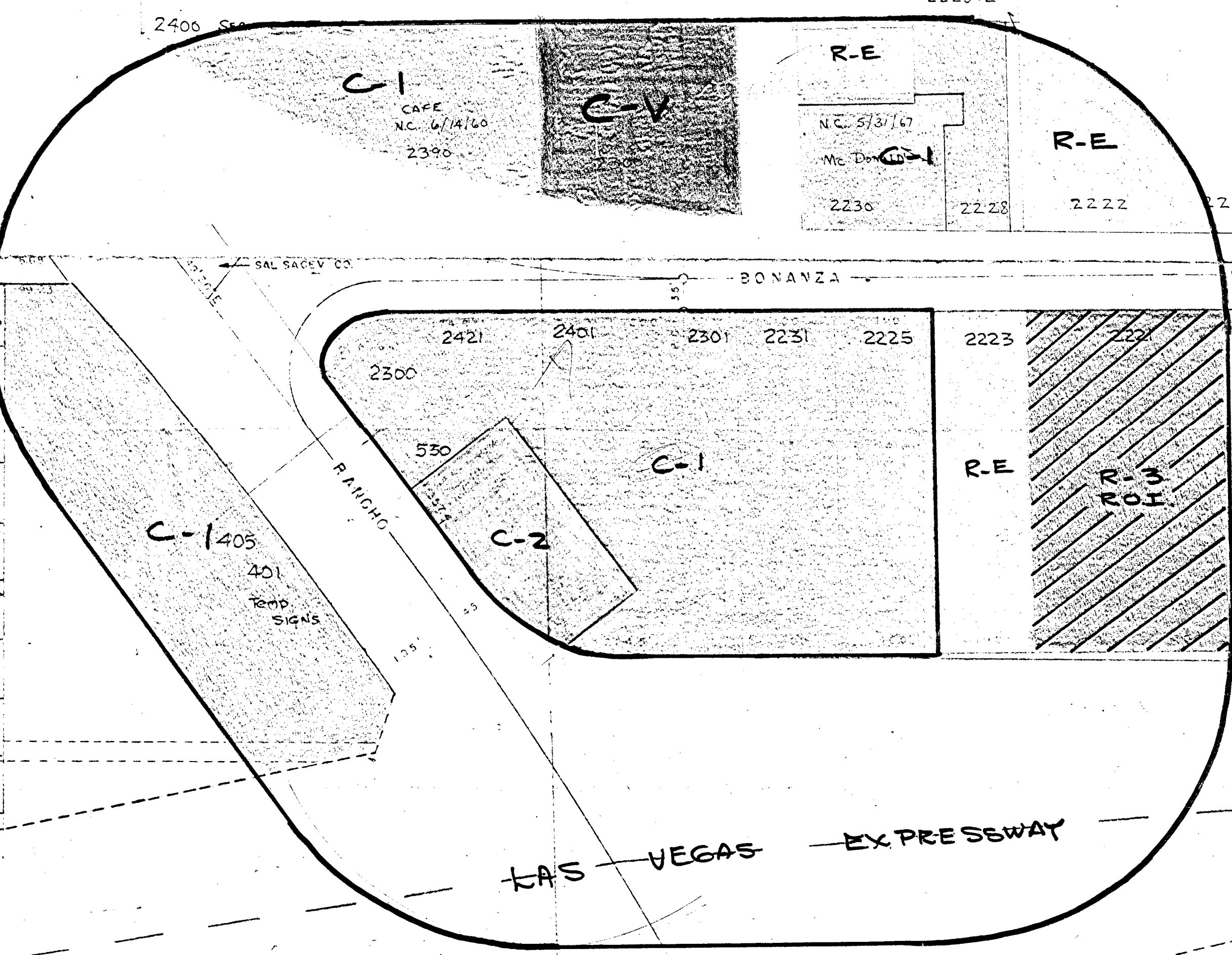
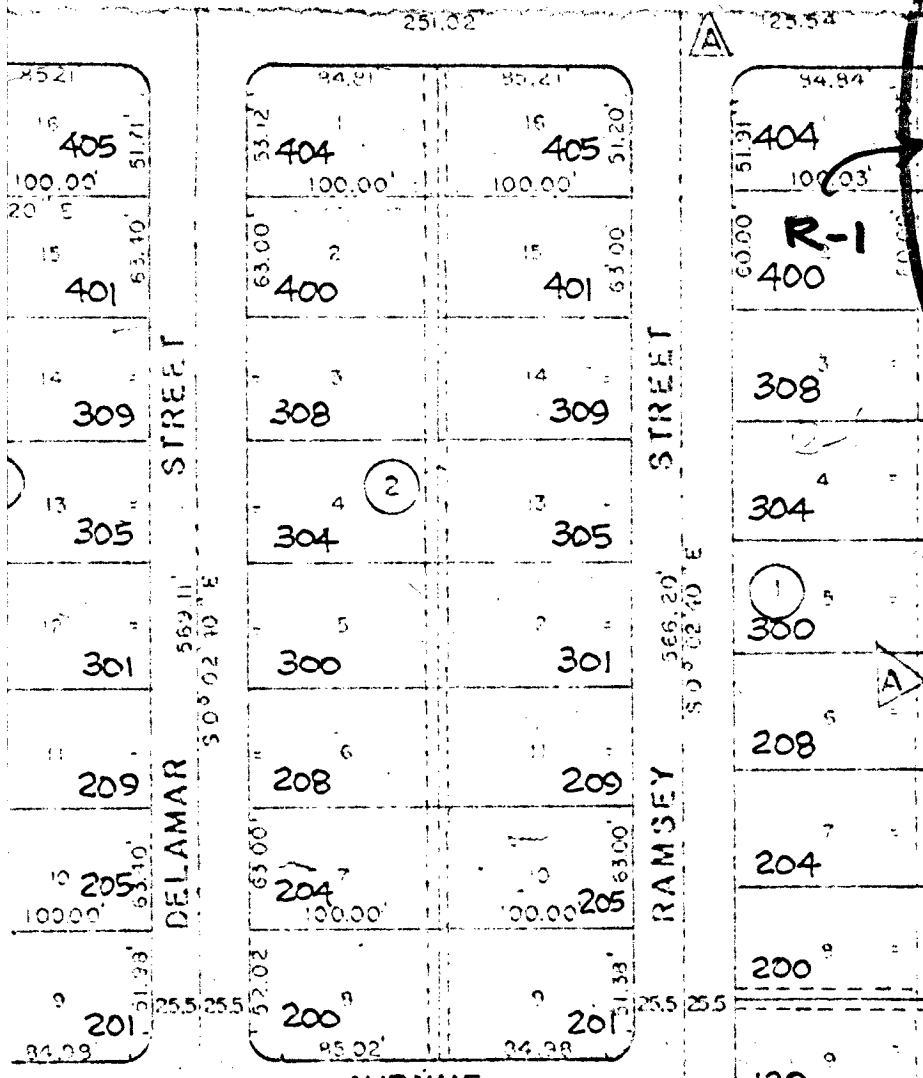
2222

2210

2206

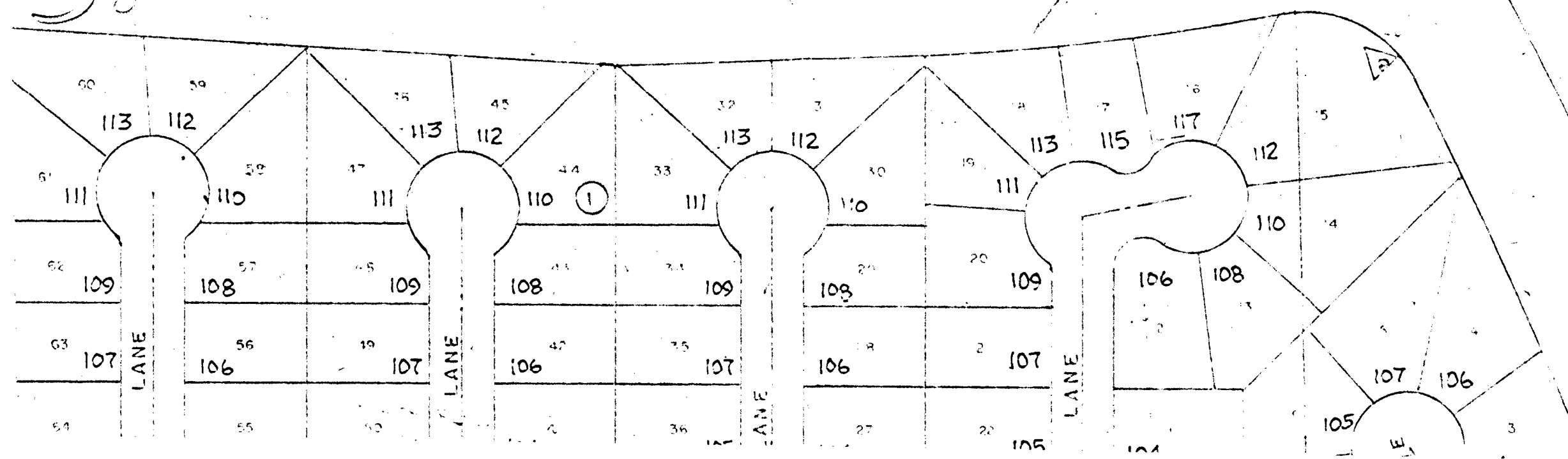
2200

2110

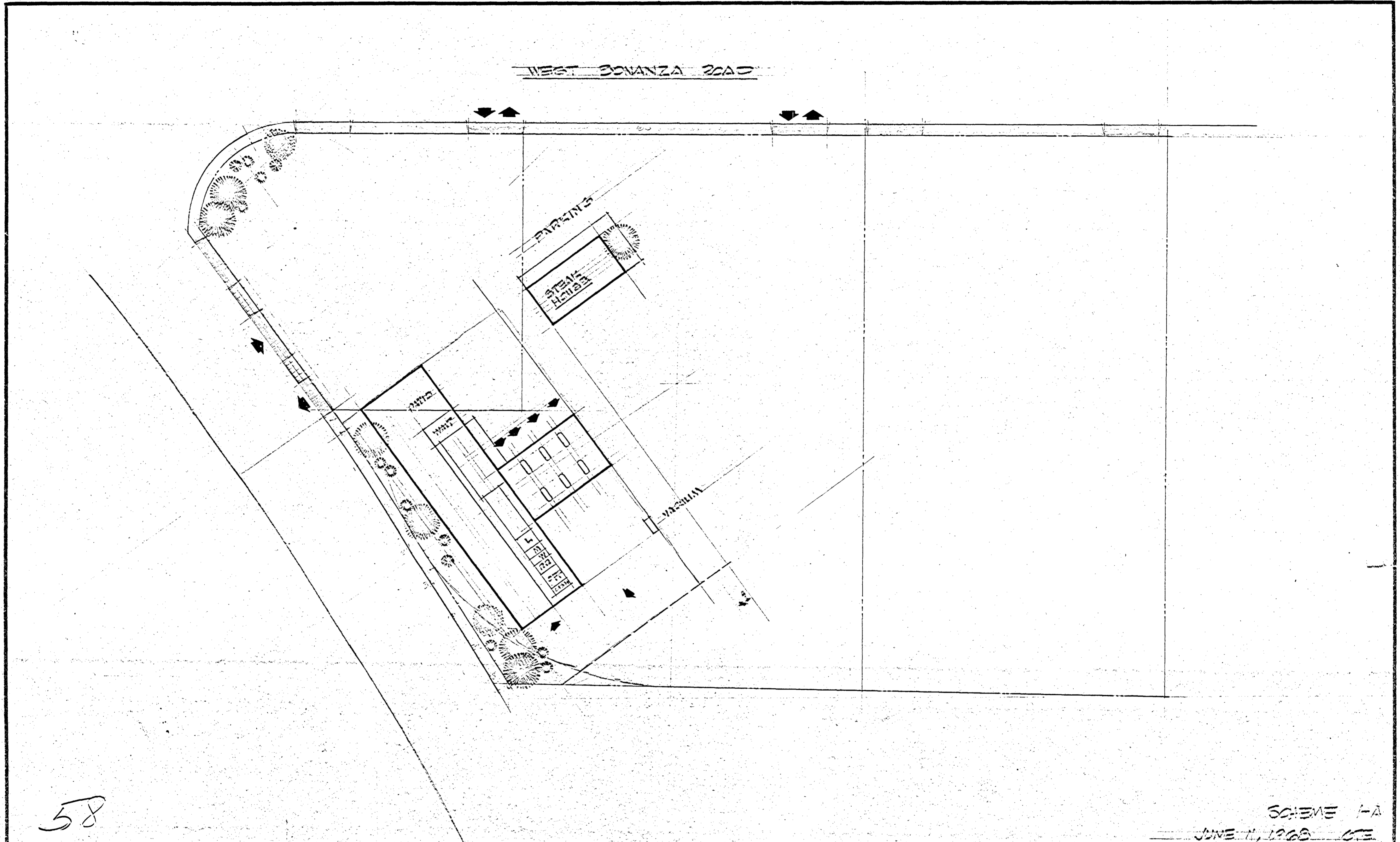


KAS VEGAS EXPRESSWAY

58



2-58-66



58

SCHEME FA  
 JUNE 11, 1968 GTE

SHEET PROPOSED CAR WASH & SANDWICH SHOP REVISIONS APPROVED CONTRACTOR  
MZ. SID HANO FOR OWNER



Gerald Moffitt Associates Architects AIA

ERROL HILL ASSOCIATE ARCHITECT