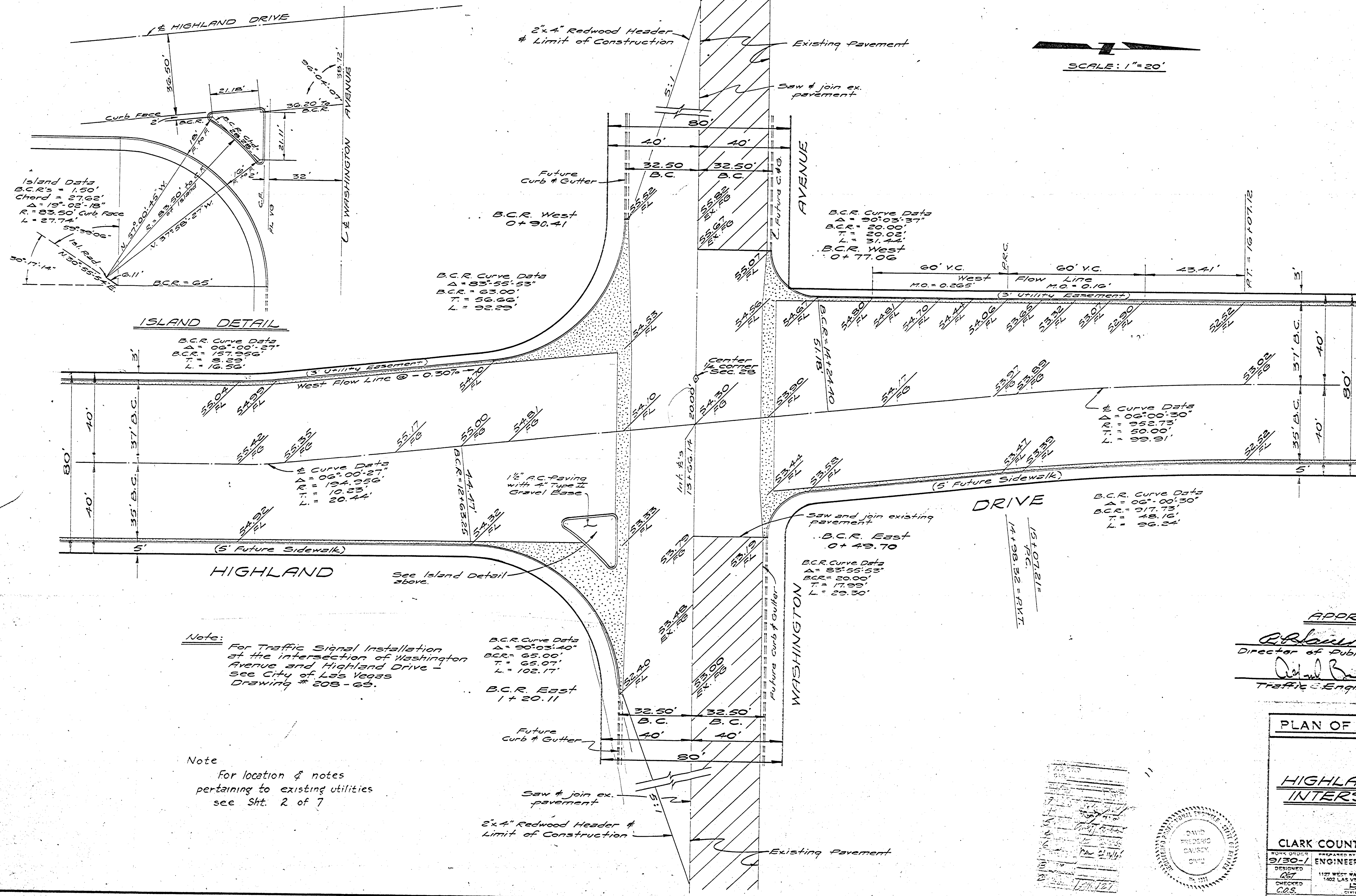
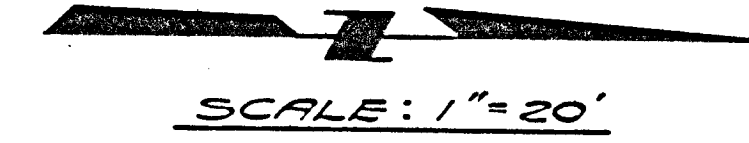


DEPT. OF PUBLIC WORKS
 DIVISION OF ENGINEERING
 100 SOUTH BROADWAY
 NEW YORK, N. Y.
 DATE - SEPTEMBER 11, 1914

57



ISLAND DETAIL

B.C.R. Curve Data
Δ = 06° 00' 27"
B.C.R. = 157.956
T = 8.23
L = 16.56

West Flow Line @ -0.30%
5' Future Sidewalk

Curve Data
Δ = 06° 00' 27"
R = 194.956
T = 10.23
L = 20.44

B.C.R. Curve Data
Δ = 90° 03' 40"
B.C.R. = 65.00
T = 65.07
L = 102.17

B.C.R. East
1+20.11

Note: For Traffic Signal Installation at the intersection of Washington Avenue and Highland Drive - see City of Las Vegas Drawing # 208-65.

Note: For location & notes pertaining to existing utilities see Sht. 2 of 7

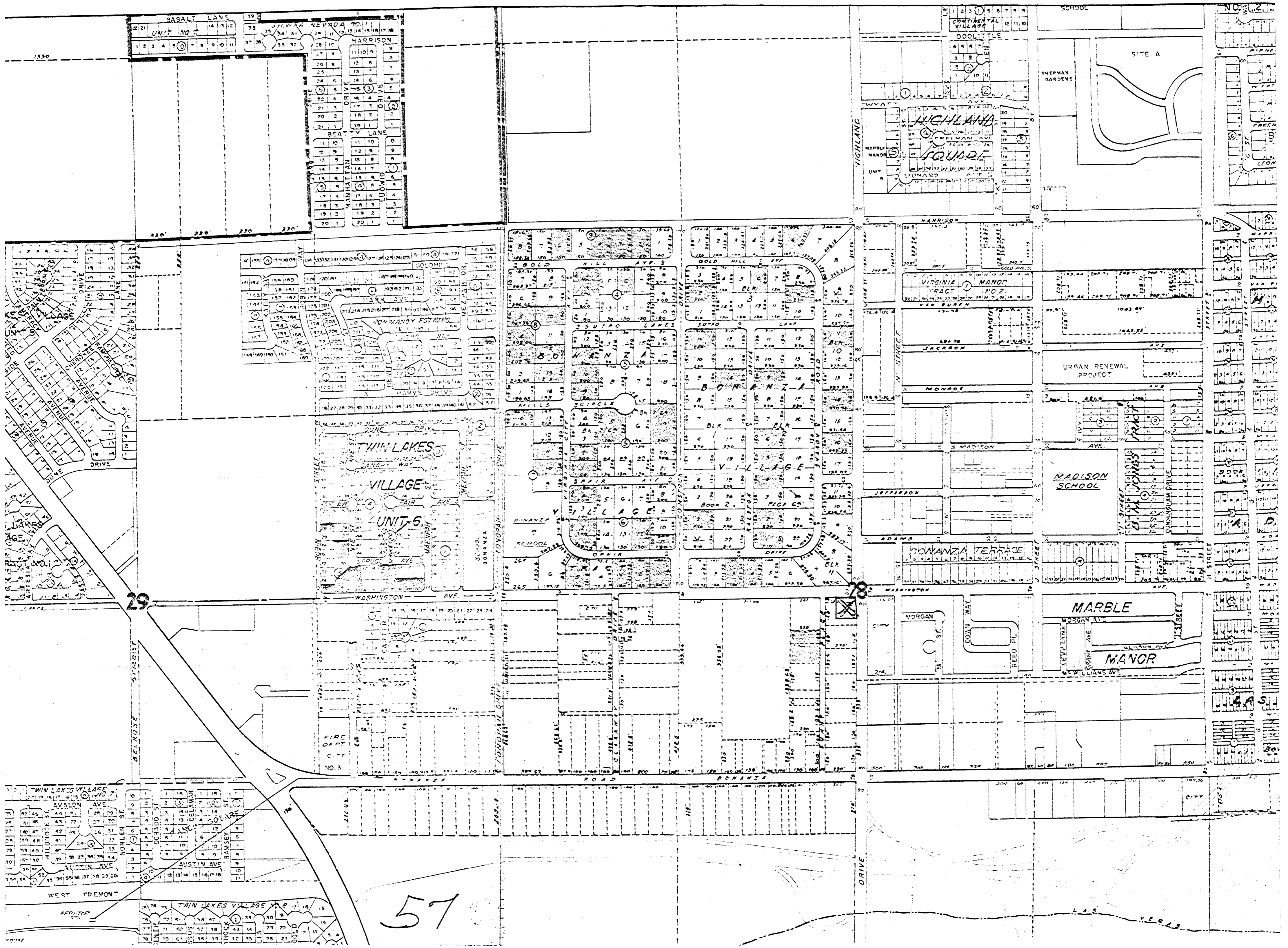
APPROVALS
Director of Public Works _____ Date _____
Traffic Engineer _____ Date 2-2-65

PLAN OF STREETS

HIGHLAND DRIVE INTERSECTIONS

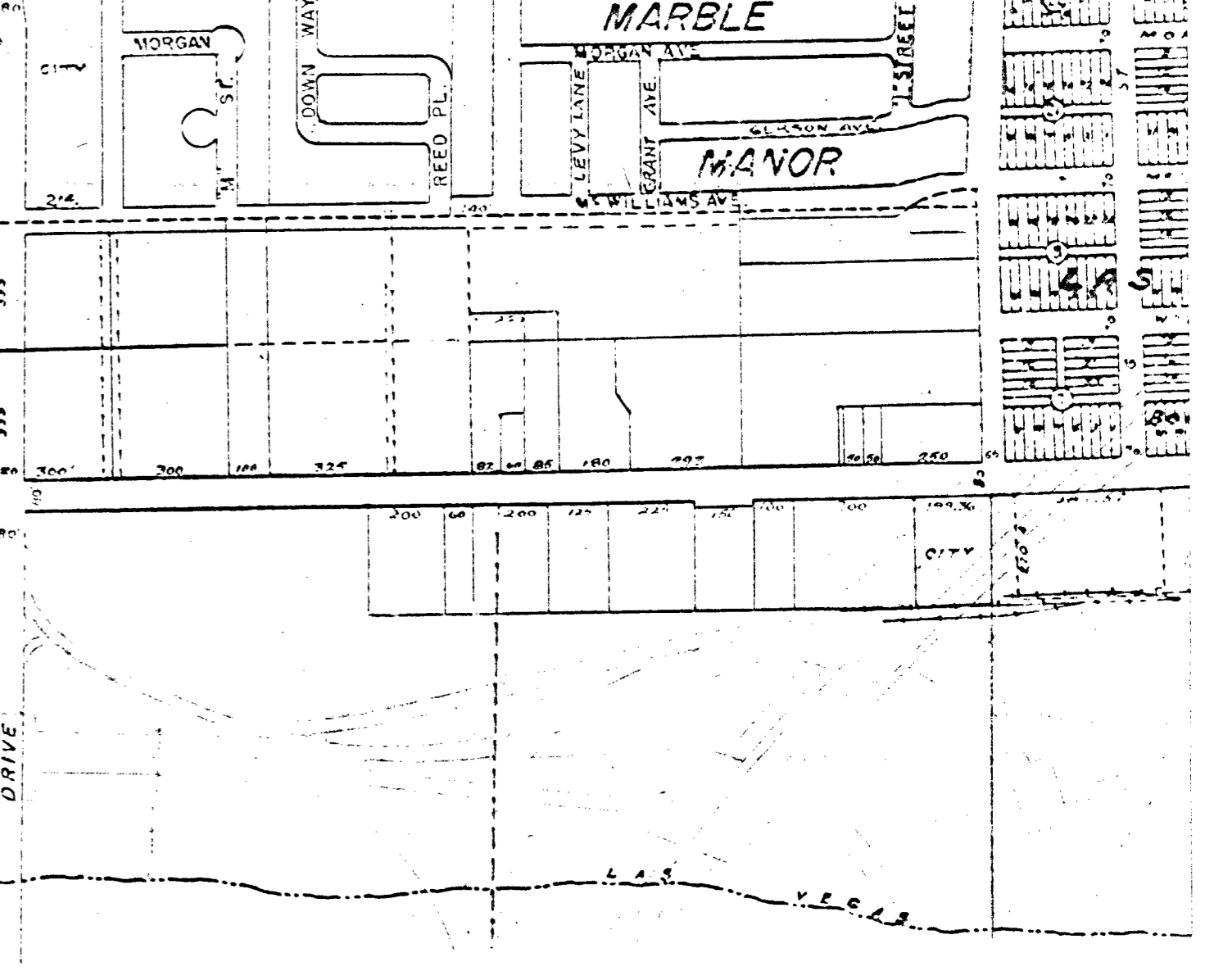
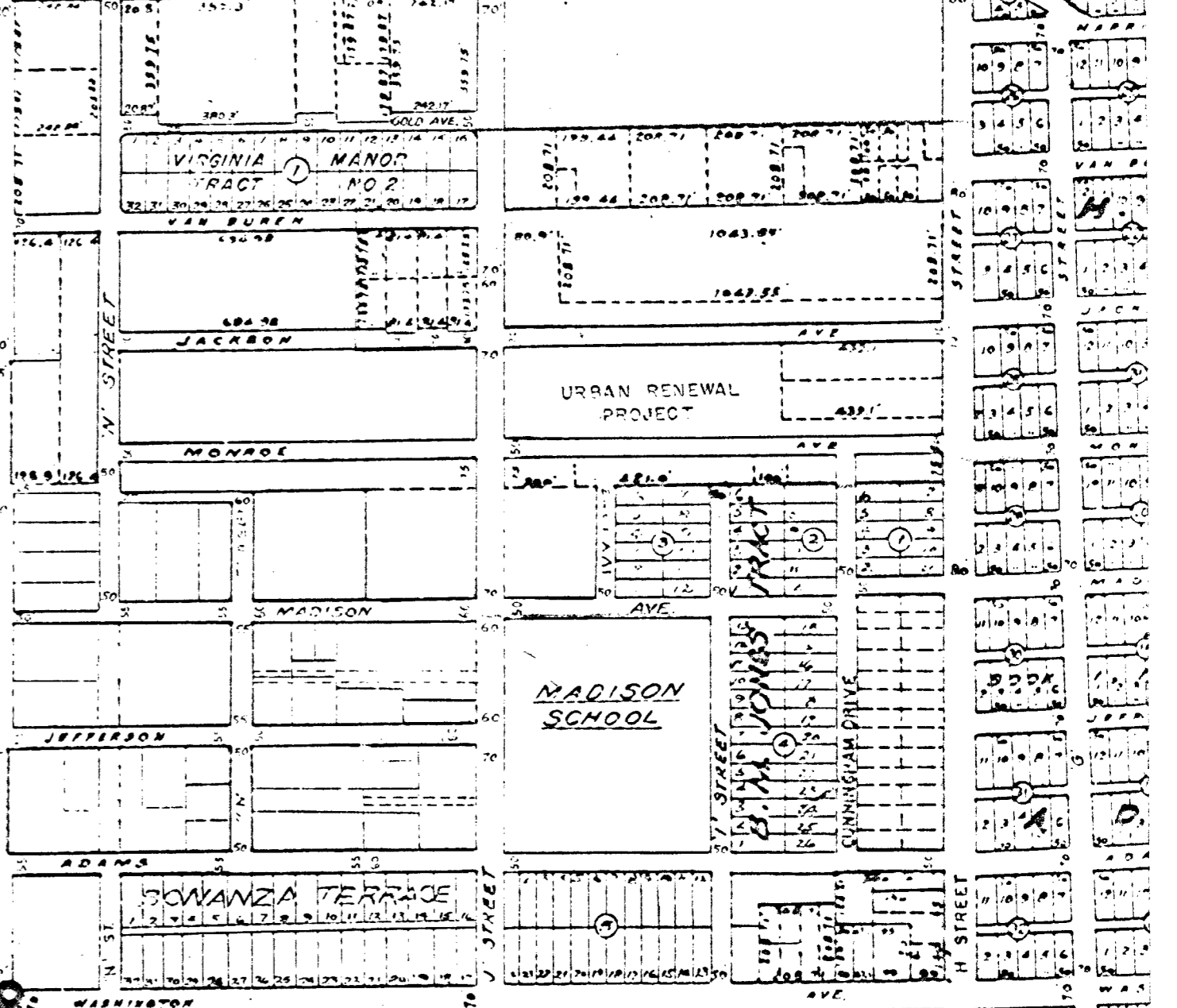
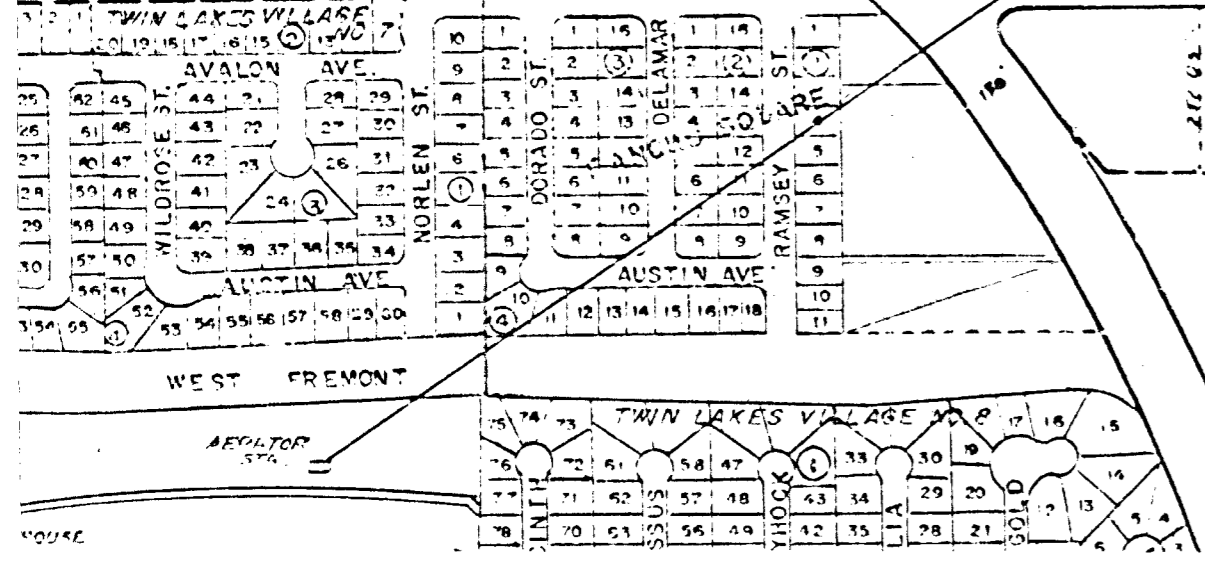
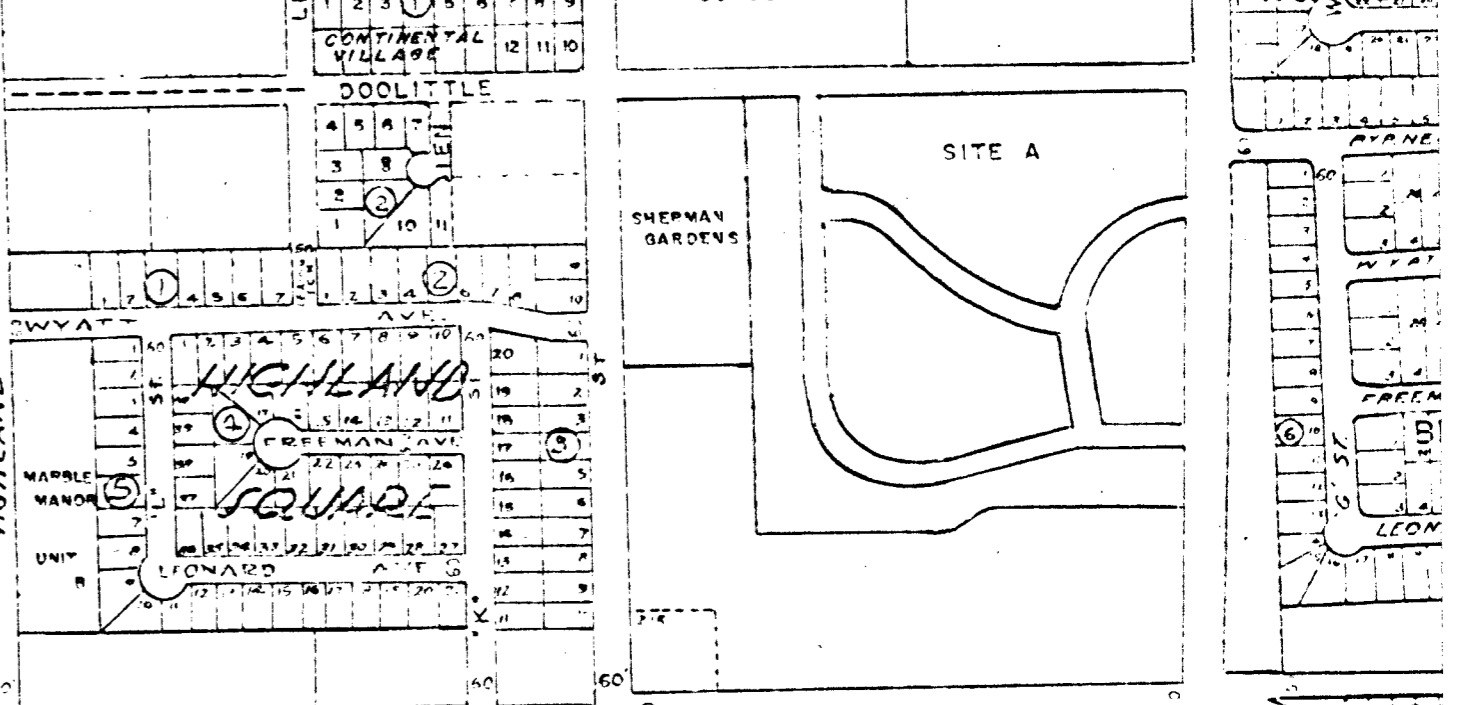
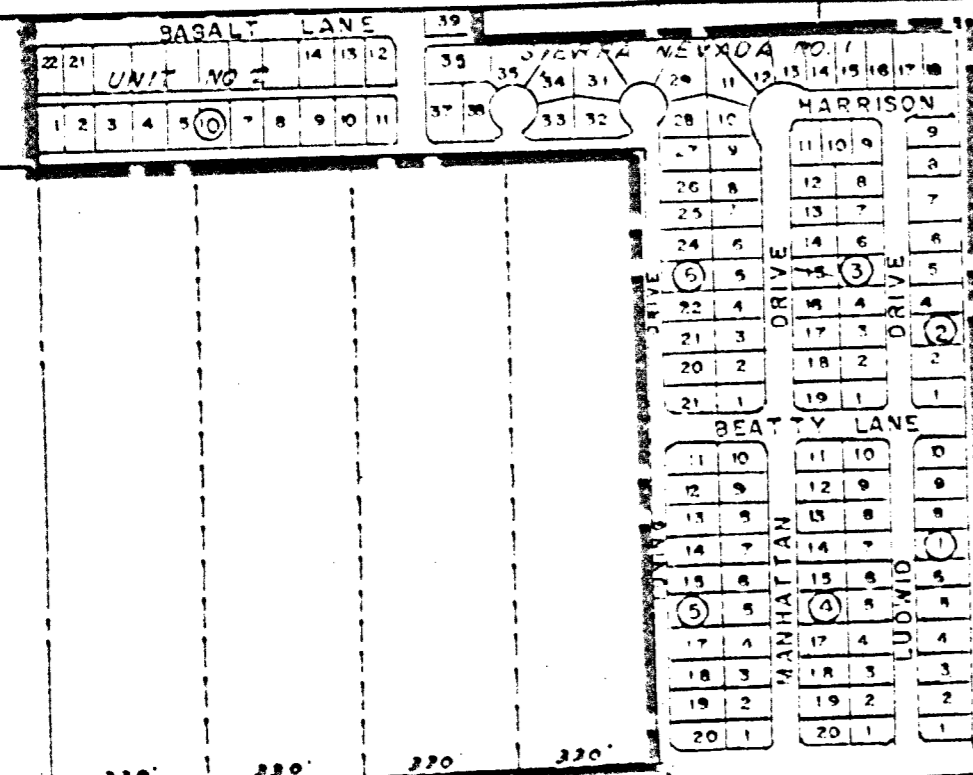
CLARK COUNTY NEVADA
ENGINEERING SERVICE CORPORATION
SHEET 5 OF 7 107-V-616

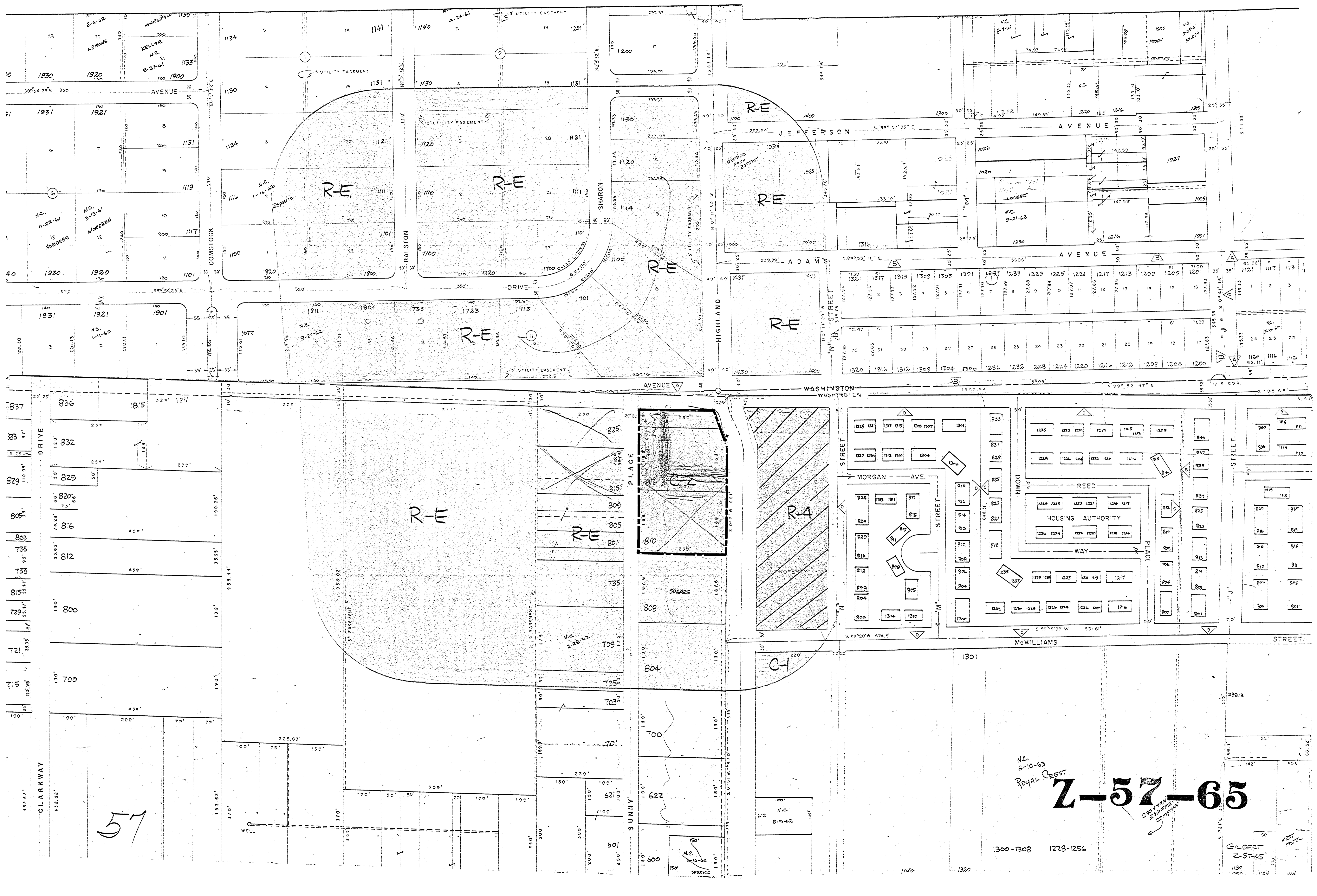
57



29

57





57

N.C. 6-10-63
ROYAL CREST
Z-57-65

1300-1308 1228-1256

GILBERT
Z-57-65

1120 1124 1128