

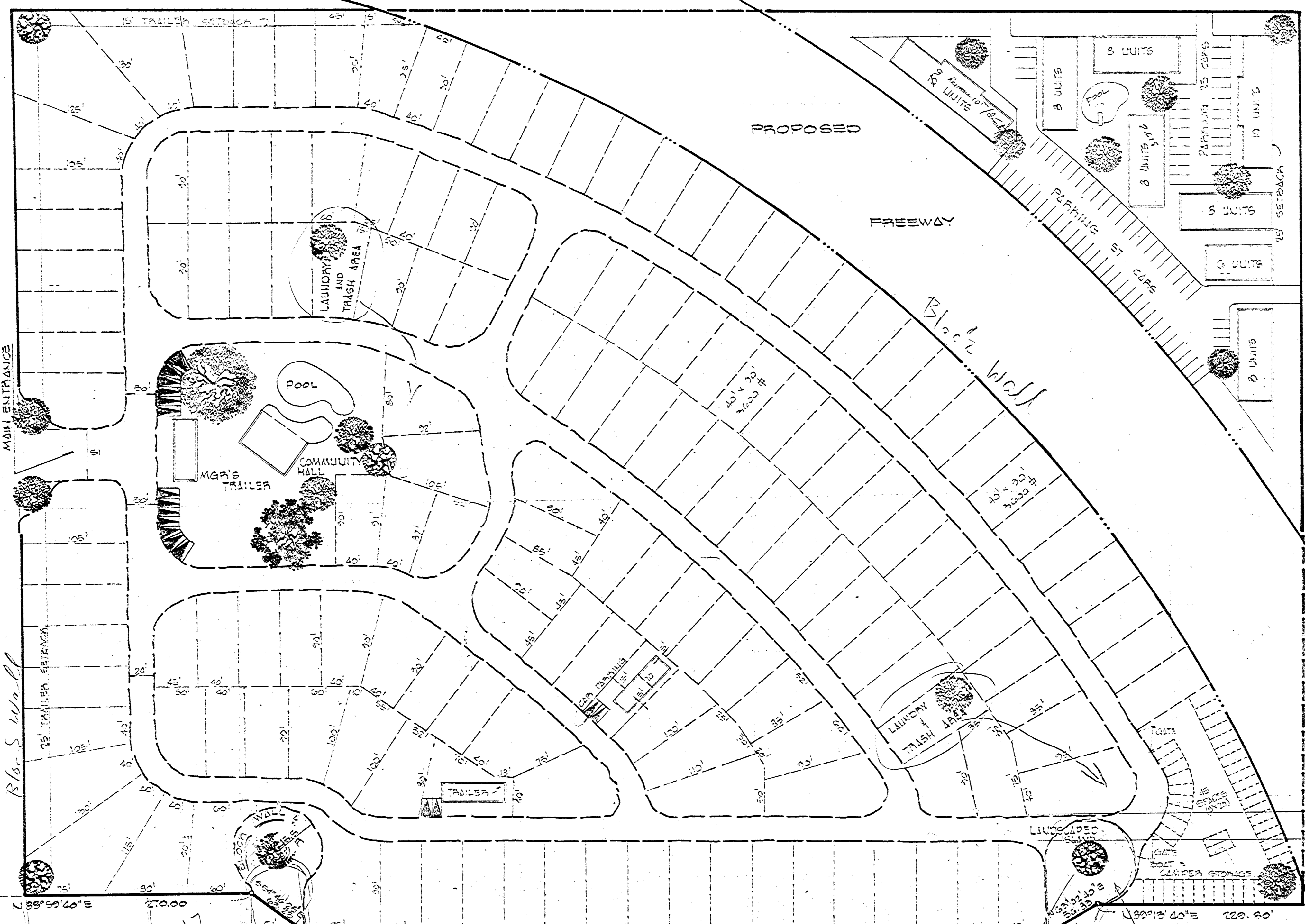
W 1/4 COR.
SEC. 31, T20S, R 02E.

STEWART AVENUE N 89° 22' 05" E 1321.00'

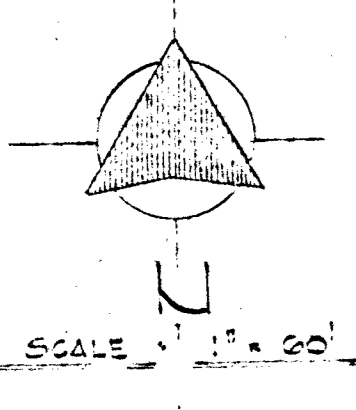
PECOS ROAD 208.68' W 0° 00' 26" W

GENERAL NOTES

1. ALL UTTERIOR STREETS SHALL BE 24' WIDE EXCEPT AS OTHERWISE NOTED (AT ENTRANCE & EXITS)
2. MINIMUM SIZE LOT FOR 20'x60' TRAILER SHALL BE 40'x40' OR 3000 SQ FT.
3. LAUNDRY SITES SHALL BE WITHIN A 500' RADIUS OF EACH TRAILER SITE.
4. NUMBER OF TRAILER SITES = 154
5. NUMBER OF APARTMENTS = 85
 17 1 BEDROOM
 68 2 BEDROOM



PECOS PARK UNIT 1



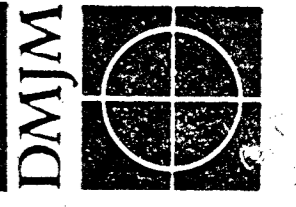
Callie Jones Water
2' 1/2"
2-5' x 20' square per space
bottom in open hole

51

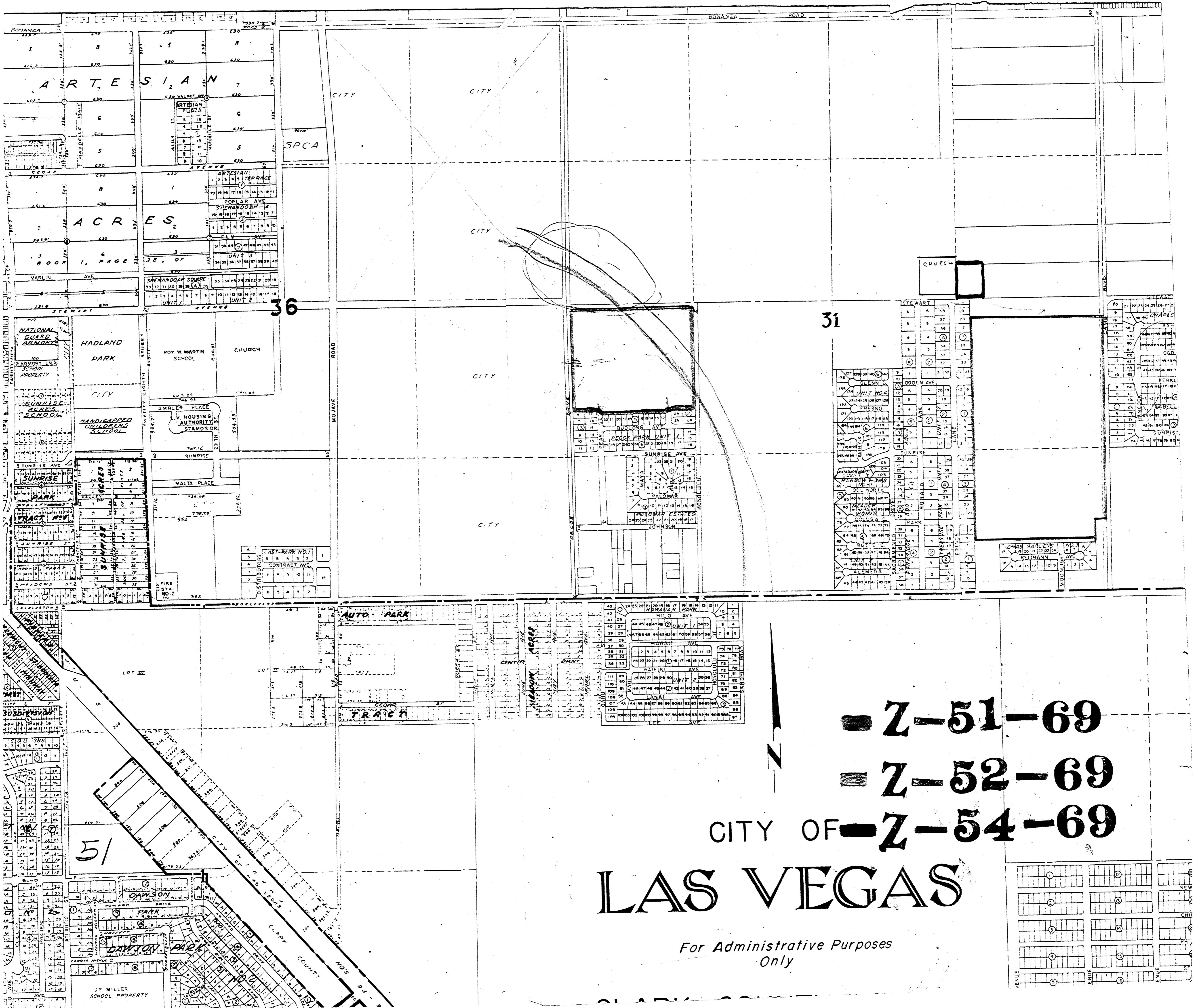
JOB NO.	6713-1-1
SHEET NO.	1 OF 1 SHEET
DATE	72 JULY 69
DRAWN BY	J.L.C.
CHECKED BY	C.O.S.
APPROVED BY	C.O.S.

PECOS PARK
120 1/2 CAMINO DRIVE
BEVERLY HILLS, CALIF.

DANIEL, MANN, JOHNSON, & MENDENHALL
309 S. THIRD ST. • LAS VEGAS, NEVADA 89101 • TEL. 702-384-8881
PLANNING & ARCHITECTURE & ENGINEERING & SYSTEMS & ECONOMICS



2-51-69



36

31

- 2-51-69
- ▨ 2-52-69
- - - 2-54-69

CITY OF
LAS VEGAS

For Administrative Purposes
 Only

51