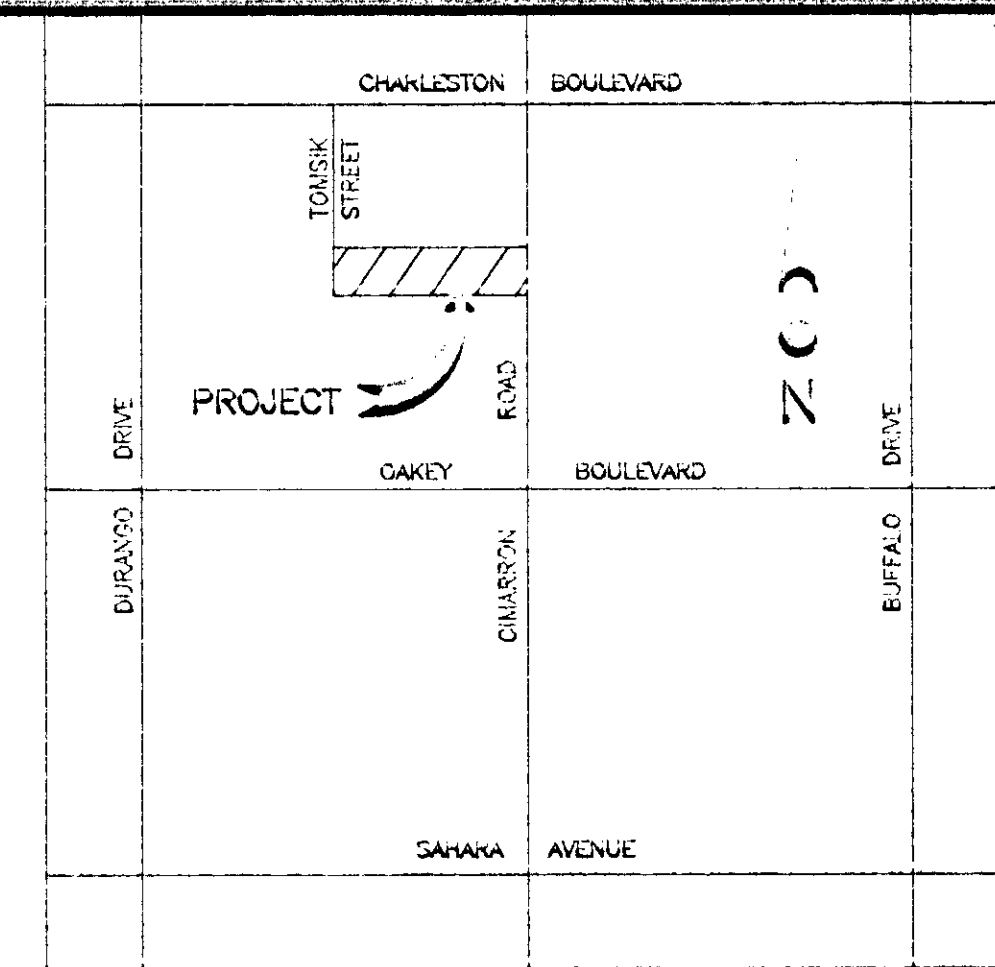
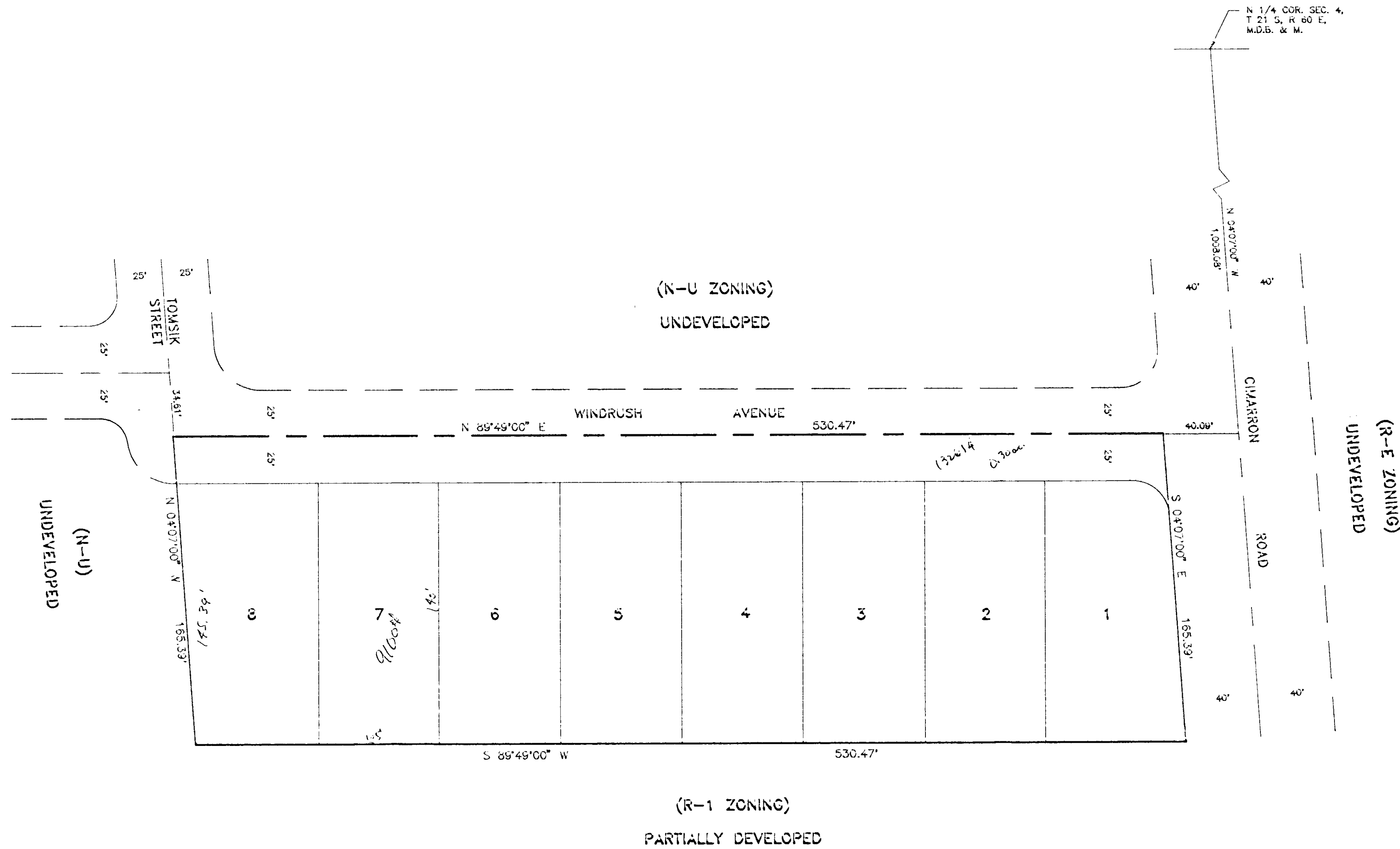


WINDRUSH ESTATES

A PORTION OF THE NE 1/4 NW 1/4 SEC. 4,
T. 21 S., R. 60 E., M.D.B. & M.,
CITY OF LAS VEGAS, NEVADA

1" = 40'



OWNER/DEVELOPER

RAYMOND H. WILLS & BARBARA D. WILLS
7101 ALTA DRIVE
LAS VEGAS, NEVADA 89128
TELE: (702) 363-6113

NO.	DATE	REVISIONS DESCRIPTION	APPROVED



E.J. WOJCIK ENGINEERING
 CIVIL ENGINEERING CONSULTANT
 620 South 11th Street, Suite 7
 Las Vegas, Nevada 89101
 Edward J. Wojcik, P.E.
 (702) 866-1877

NOTES:

- ZONING: (EXISTING) N-U ON 2.01 ACRES. PROPOSED R-1 ON 2.01 ACRES.
- DENSITY: 8 (R-1) LOTS EQUALS 3.98 LOTS/ACRE.

*1.70 acres net = 4.11 acres net
2.00 acres proposed lot.*

WINDRUSH ESTATES
SITE PLAN
TO ACCOMPANY ZONE CHANGE.

(v) SCALE: N/A

(h) SCALE: 1" = 40'

J.N. : 901101

DRAWN BY: DPL

CHECKED BY: E.J.W.

SHEET NO. :

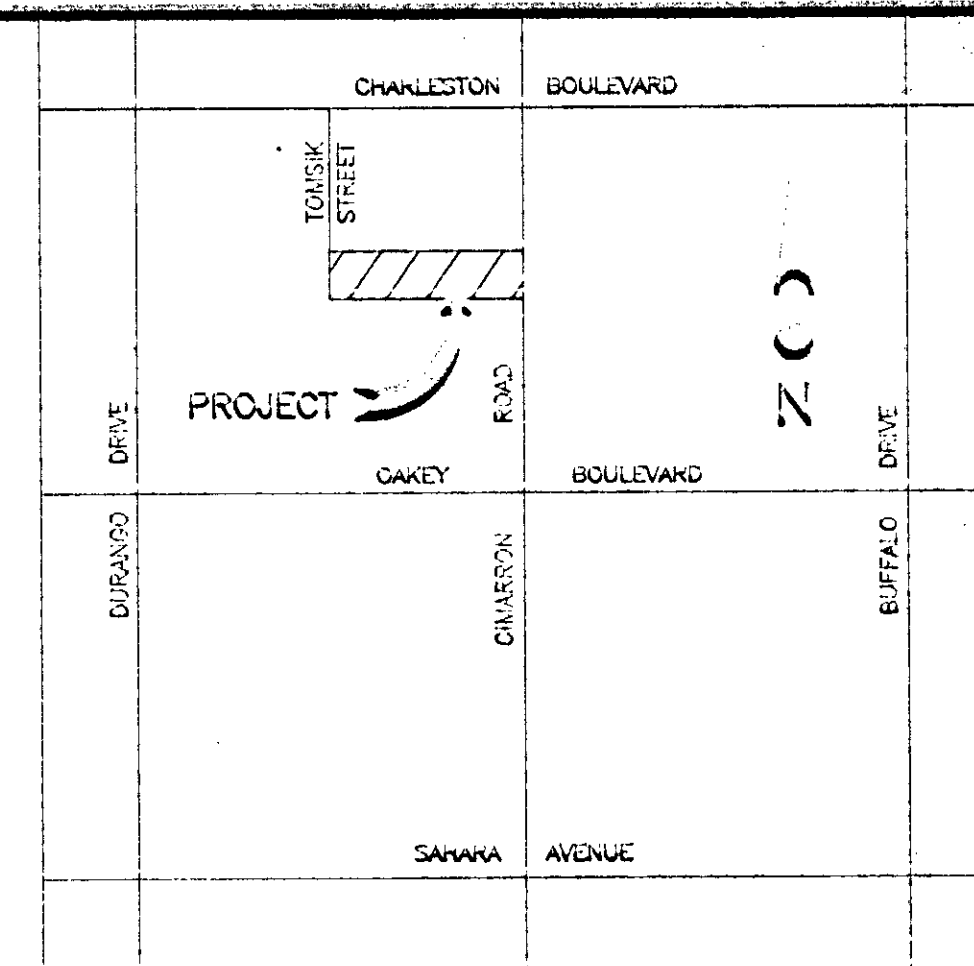
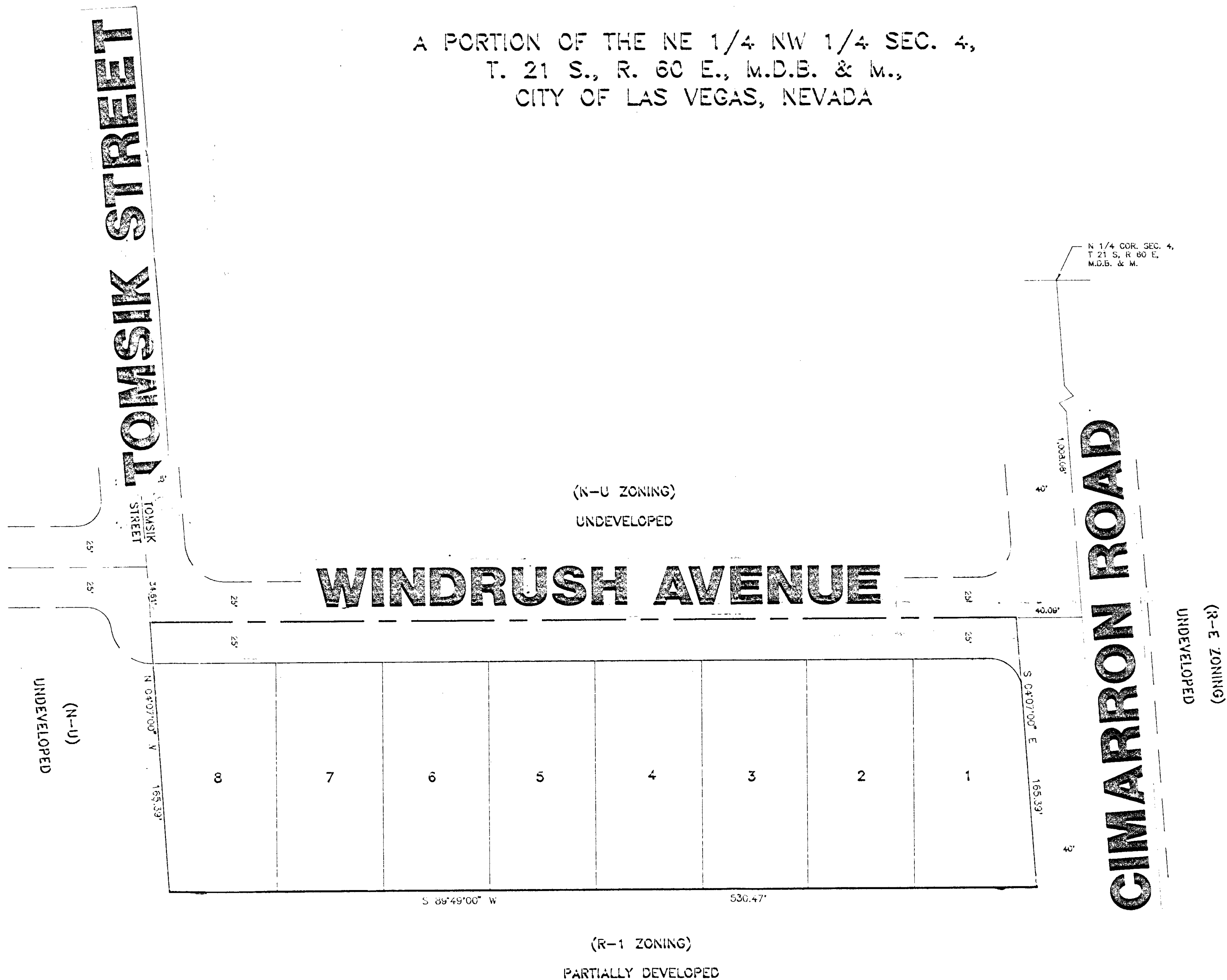
1 OF 1

STAFF
P/C 1/22/91
2-16-91

WINDRUSH ESTATES

A PORTION OF THE NE 1/4 NW 1/4 SEC. 4,
T. 21 S., R. 60 E., M.D.B. & M.,
CITY OF LAS VEGAS, NEVADA

1" = 40'



VICINITY MAP
NO SCALE

OWNER/DEVELOPER

RAYMOND H. WILLS & BARBARA D. WILLS
7101 ALTA DRIVE
LAS VEGAS, NEVADA 89128
TELE: (702) 363-6113



E.J. WOJCIK ENGINEERING
CIVIL ENGINEERING CONSULTANT
620 South 411st Street, Suite 7
Las Vegas, Nevada 89101
Edward J. Wojcik, P.E.
(702) 866-1522

NOTES:

- ZONING: (EXISTING) N-U ON 2.01 ACRES,
(PROPOSED) R-1 ON 2.01 ACRES.
- DENSITY: 8 (R-1) LOTS EQUALS 3.98 LOTS/ACRE.

WINDRUSH ESTATES
SITE PLAN
TO ACCOMPANY ZONE CHANGE

(V) SCALE: N/A

(H) SCALE: 1"=40'

J.N. : 901101

DRAWN BY: DPL

CHECKED BY: E.J.W

SHEET NO. :

1 OF 1

CC-2/20/91-APP.
PC-1/22/91-APP



STAFF
P/C 1/22/91
Z-162-90

Z-162-90