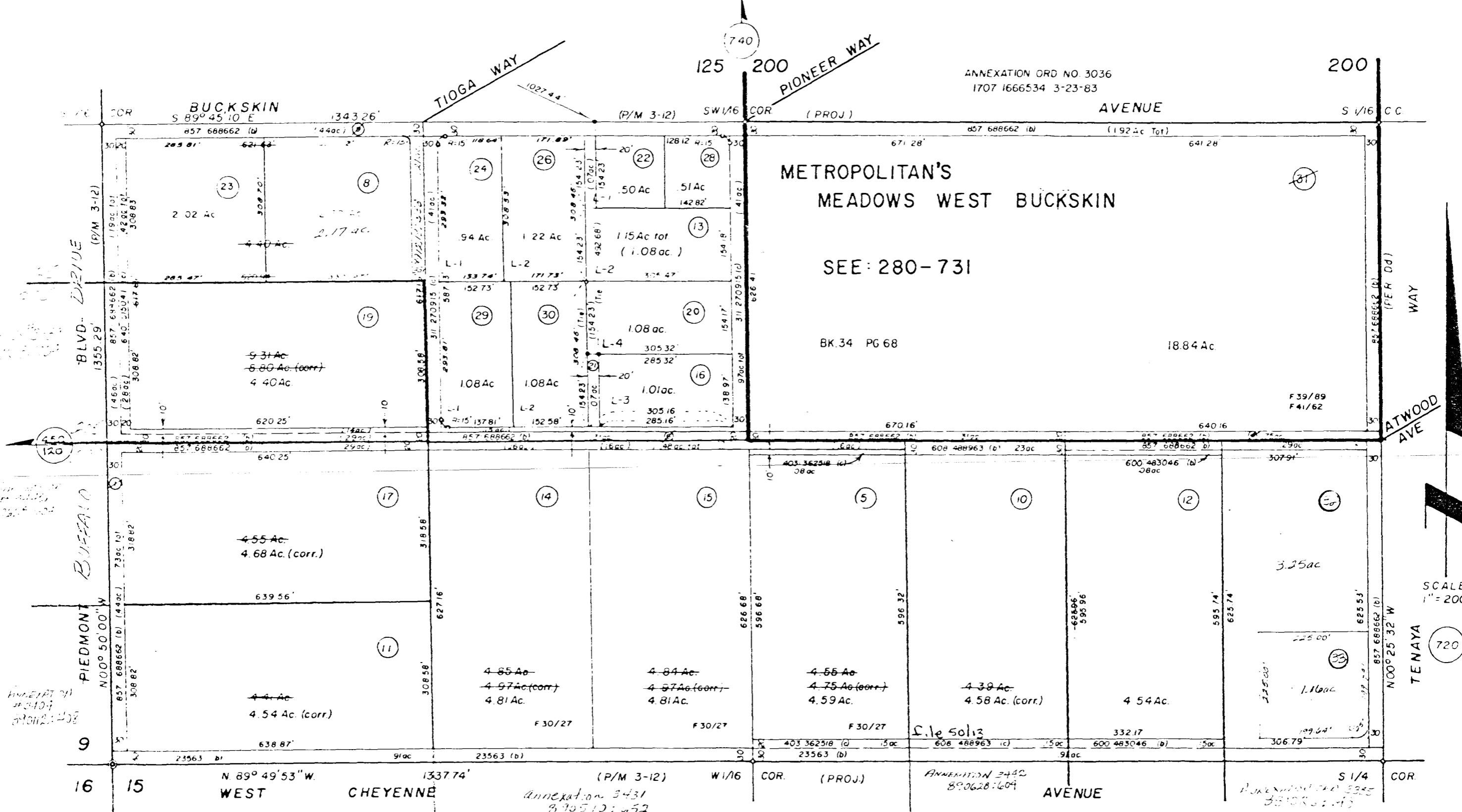


S<sup>2</sup> SW<sup>4</sup> SEC 10 T.20S. R.60E.

280-730

ANNEXATION ORD NO. 3036  
1707 1666534 3-23-83



(13) (16) (20) ( ) P/M 3-12  
 NOTE SPANDRELS CUT PER P/M 3-12  
 (20) (24) (25) (26) P/M 8-5

(29) (30) PM 29-96

(290)  
590

(21) .07 Ac.

C.C.A.O. J.D. 10-15-75

FILE 2/62

NOTICE: This plat is for assessment use only and does not represent a survey. No liability is assumed as to the accuracy of the data delineated hereon.

125 - 200