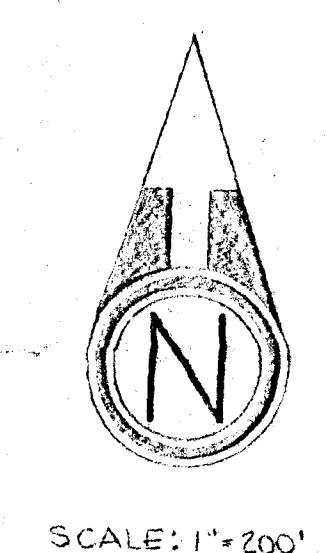


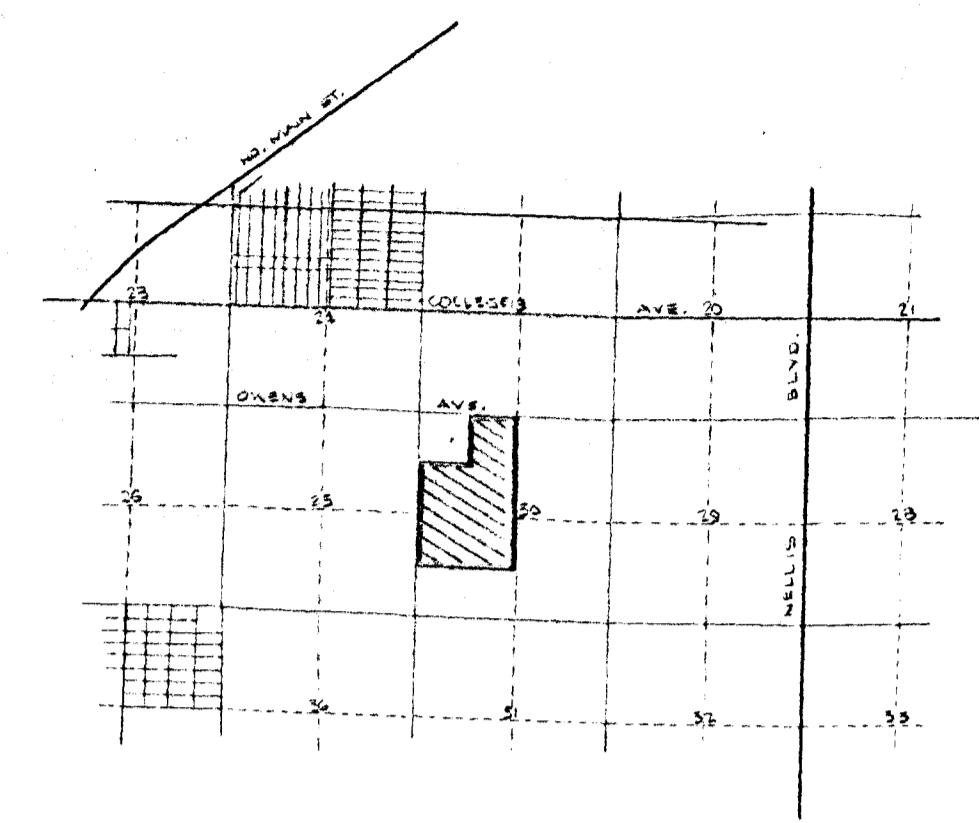
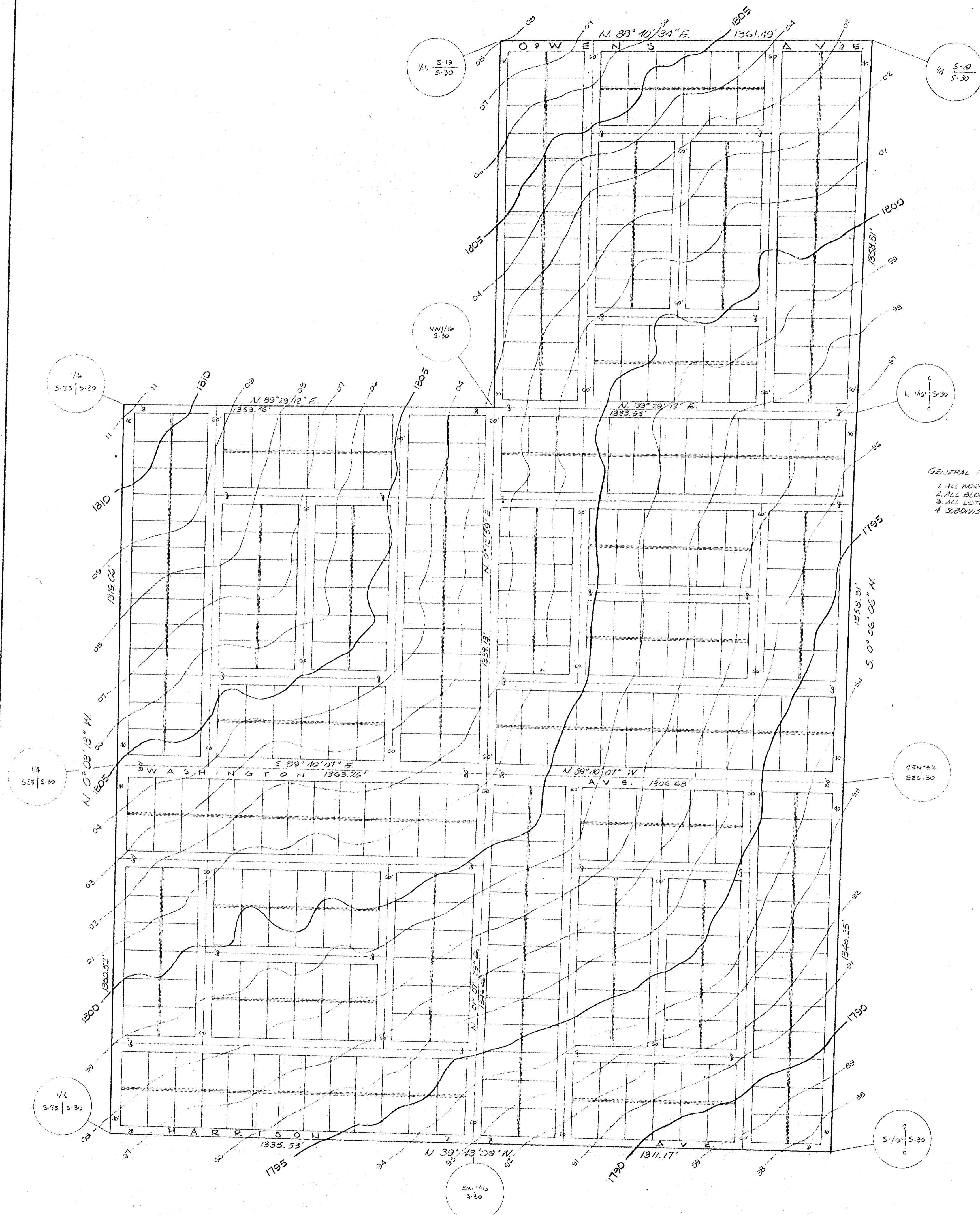
- VICINITY MAP -
SCALE: 1" = 1 MI.

- GENERAL NOTES:
1. ALL WORK TO CONFORM TO C.L.V. SPECS.
 2. ALL BLOCKS TO BE 270' X 620' AND 270' X 1250' (APPROX.)
 3. ALL LOTS TO BE 100' X 135' (APPROX.)
 4. SUBDIVISION TO HAVE A TOTAL OF 499 LOTS



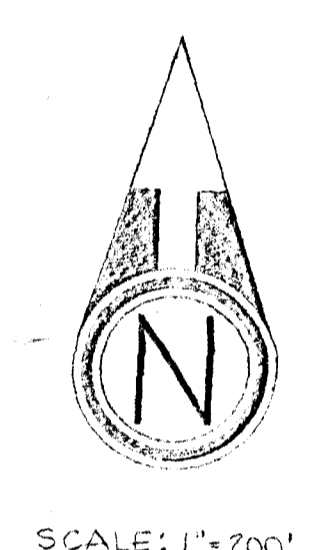
SCALE: 1" = 200'

PREPARED FOR
 WALTER DE COURCY & CHARLES J. LEWIS
 BY
 TYSON ENGINEERING CO.
 LAS VEGAS NEVADA
 29 JUN 1955

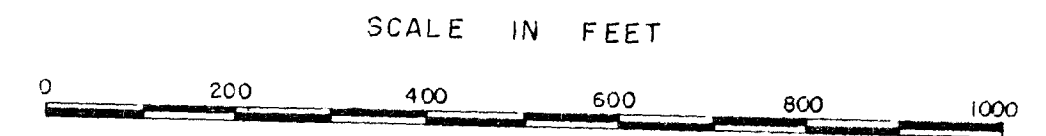
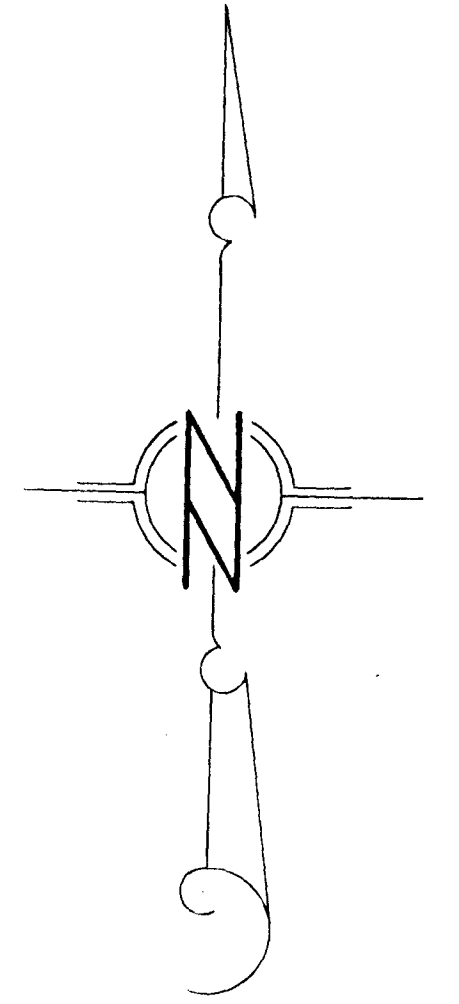


- VICINITY MAP -
SCALE: 1" = 1 MI.

GENERAL NOTES:
 1. ALL WORK TO CONFORM TO C.L.V. SPECS.
 2. ALL BLOCKS TO BE 270' X 600' AND 270' X 1250' (APPROX.)
 3. ALL LOTS TO BE 100' X 135' (APPROX.)
 4. SUBDIVISION TO HAVE A TOTAL OF 400 LOTS



PREPARED FOR
 WALTER DE COURCY & CHARLES J. LEWIS
 BY
 TYSON ENGINEERING CO.
 LAS VEGAS, NEVADA
 29 JUN 1955



LEGEND

BASIS OF BEARING: WEST LINE SEC. 30, N. 0° 03' 13" W.

ENGINEER'S CERTIFICATE

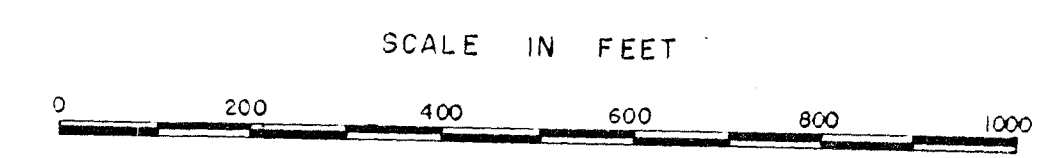
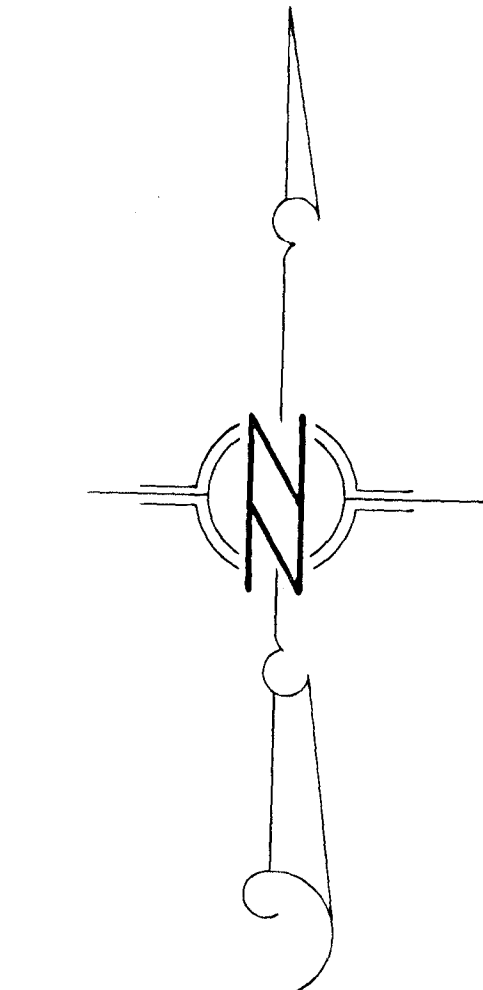
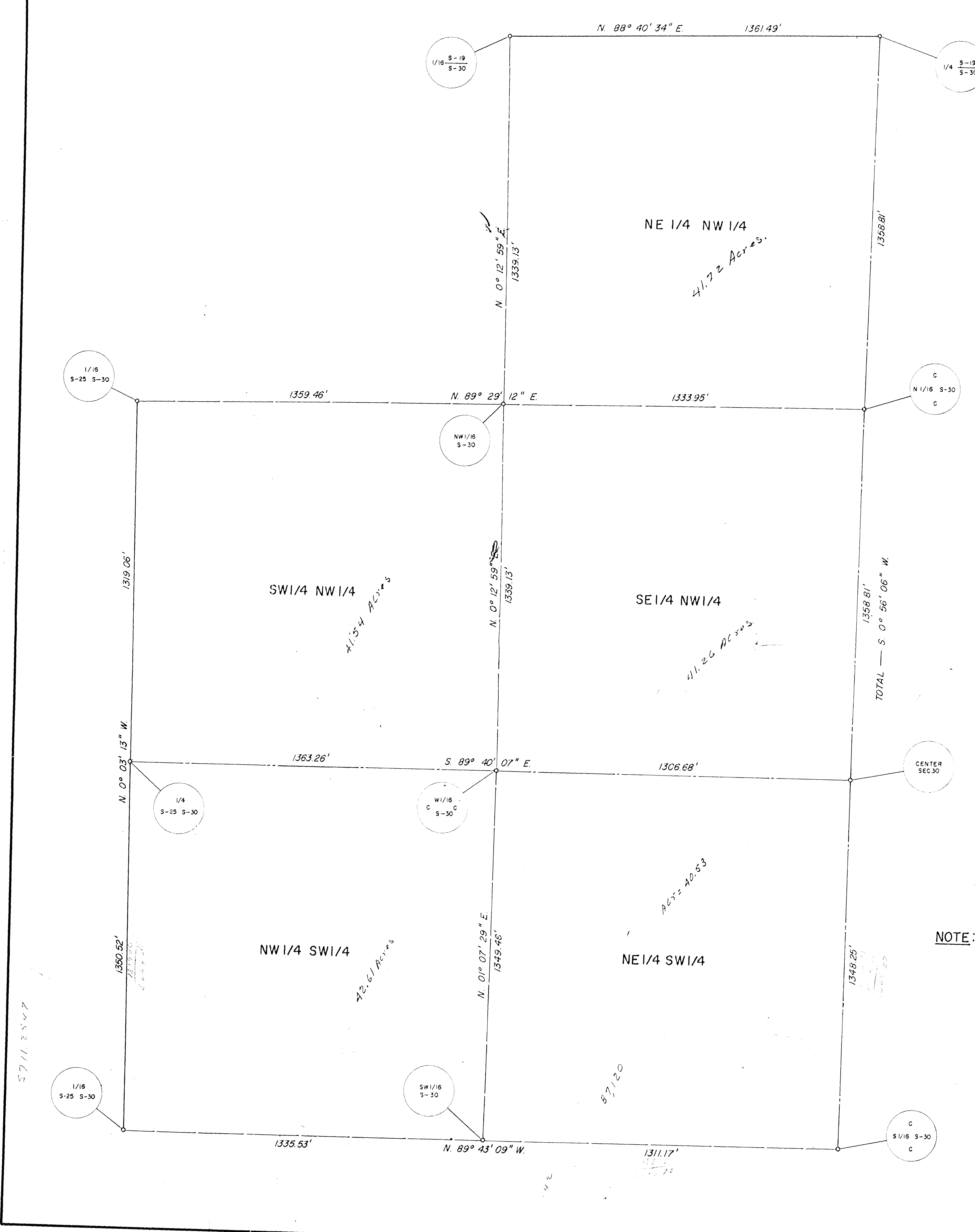
I, L. E. TYSON, REGISTERED CIVIL ENGINEER AND LAND SURVEYOR NEVADA #560 DO HEREBY CERTIFY THAT THIS MAP IS A TRUE AND CORRECT PLAT OF THE LAND SURVEYED BY ME AT THE INSTANCE OF WALTER DE COURCY, CHARLES J. LEWIS, HARRIET H. LEWIS, MARGARET H. GILBERT, AND LOCATED IN THE W 1/2, SEC. 30, T20S, R. 62E, M.D.B. & M., CLARK COUNTY, NEVADA. THIS SURVEY WAS COMPLETED ON THIS 0TH DAY OF JUNE, 1955.

L. E. Tyson
L. E. TYSON REG. CIVIL ENG. & LAND SURVEYOR NEV. 560

NOTE: NE 1/4 NW 1/4 - OWNED BY WALTER DE COURCY
 S 1/2 NW 1/4 - " CHARLES J. LEWIS
 N 1/2 SW 1/4 - " HARRIET HARRIMAN LEWIS
 MARGARET HARRIMAN GILBERT

RECORDED FOR ANNEXATION PURPOSES TO THE CITY OF LAS VEGAS.

MAP FOR RECORD OF SURVEY FOR
 WALTER DE COURCY, MARGARET HARRIMAN GILBERT,
 CHARLES J. LEWIS, HARRIET HARRIMAN LEWIS,
 NE 1/4 NW 1/4, - SW 1/4 NW 1/4, - SE 1/4 NW 1/4,
 NW 1/4 SW 1/4, - NE 1/4 SW 1/4, -
 M.D.B. & M.
 CLARK COUNTY, NEVADA



— LEGEND —
 BASIS OF BEARING: WEST LINE SEC. 30, N. 0° 03' 13" W.

ENGINEER'S CERTIFICATE

I, L. E. TYSON, REGISTERED CIVIL ENGINEER AND LAND SURVEYOR NEVADA #560 DO HEREBY CERTIFY THAT THIS MAP IS A TRUE AND CORRECT PLAT OF THE LAND SURVEYED BY ME AT THE INSTANCE OF WALTER DE COURCY, CHARLES J. LEWIS, HARRIET H. LEWIS, MARGARET H. GILBERT, AND LOCATED IN THE W 1/2, SEC. 30, T20S, R 62E, M.D.B. & M., CLARK COUNTY, NEVADA. THIS SURVEY WAS COMPLETED ON THIS 07th DAY OF JUNE, 1955.

L. E. Tyson
 L. E. TYSON REG. CIVIL ENG. & LAND SURVEYOR NEV. 560

NOTE: NE 1/4 NW 1/4 - OWNED BY WALTER DE COURCY
 S 1/2 NW 1/4 - " CHARLES J. LEWIS
 N 1/2 SW 1/4 - " HARRIET HARRIMAN LEWIS
 MARGARET HARRIMAN GILBERT

RECORDED FOR ANNEXATION PURPOSES
 TO THE CITY OF LAS VEGAS.

Total Acres
 307.56

MAP FOR RECORD OF SURVEY
 FOR
 WALTER DE COURCY, MARGARET HARRIMAN GILBERT
 CHARLES J. LEWIS, HARRIET HARRIMAN LEWIS
 NE 1/4 NW 1/4, - SW 1/4 NW 1/4, - SE 1/4 NW 1/4, -
 NW 1/4 SW 1/4, - NE 1/4 SW 1/4, -
 M.D.B. & M.
 CLARK COUNTY, NEVADA