

W. CHARLESTON BLVD.

W. CHARLESTON BLVD.

W. CHARLESTON BLVD.

DEL REY AVE.

DEL REY AVE.

DEL REY AVE.

W. OAKLEY BLVD.

W. OAKLEY

W. OAKLEY

O'BANNON

O'BANNON

O'BANNON

W. SAHARA AVE.

W. SAHARA AVE.

W. SAHARA AVE.

ELDORA ST.

ELDORA AVE.

ELDORA AVE.

EDNA AVE.

EDNA AVE.

EDNA AVE.

PALMYRA AVE.

PALMYRA AVE.

PALMYRA AVE.

MENTAL HEALTH CENTER

DESERT RESEARCH INSTITUTE

CITY OF LAS VEGAS

OAKLEY

O'BANNON

A-4-32

DECATUR BLVD.

DECATUR BLVD.

3

2

10

12

LYTTON AVE.

HOLMBY AVE.

HOLMBY AVE.

HOLMBY AVE.

LONNORIDGE AVE.

LONNORIDGE AVE.

DEL REY AVE.

DEL REY AVE.

MOUNTAIN VIEW

MOUNTAIN VIEW

DEL MONTE AVE.

DEL MONTE AVE.

DOE AVE.

DOE AVE.

WESTLEIGH AVE.

WESTLEIGH AVE.

WILLSHIRE

WILLSHIRE

EDMOND ST.

EDMOND ST.

BAYVIEW

BAYVIEW

2017

2017

2016

2016

2015

2015

2014

2014

2013

2013

2012

2012

2011

2011

2010

2010

2009

2009

2008

2008

2007

2007

2006

2006

2005

2005

2004

2004

2003

2003

2002

2002

2001

2001

2000

2000

1999

1999

1998

1998

1997

1997

1996

1996

1995

1995

1994

1994

1993

1993

1992

1992

1991

1991

1990

1990

1989

1989

1988

1988

1987

1987

1986

1986

1985

1985

1984

1984

1983

1983

1982

1982

1981

1981

1980

1980

1979

1979

1978

1978

1977

1977

1976

1976

1975

1975

1974

1974

1973

1973

1972

1972

1971

1971

1970

1970

1969

1969

1968

1968

1967

1967

1966

1966

1965

1965

1964

1964

1963

1963

1962

1962

1961

1961

1960

1960

1959

1959

1958

1958

1957

1957

1956

1956

1955

1955

1954

1954

1953

1953

1952

1952

1951

1951

1950

1950

1949

1949

1948

1948

1947

1947

1946

1946

1945

1945

1944

1944

1943

1943

1942

1942

1941

1941

1940

1940

1939

1939

1938

1938

1937

1937

1936

1936

1935

1935

1934

1934

1933

1933

1932

1932

1931

1931

1930

1930

1929

1929

1928

1928

1927

1927

1926

1926

1925

1925

1924

1924

1923

1923

1922

1922

1921

1921

1920

1920

1919

1919

1918

1918

1917

1917

1916

1916

1915

1915

1914

1914

1913

1913

1912

1912

1911

1911

1910

1910

1909

1909

1908

1908

1907

1907

1906

1906

1905

1905

1904

1904

1903

1903

1902

1902

1901

1901

1900

1900

1899

1899

1898

1898

1897

1897

1896

1896

1895

1895

1894

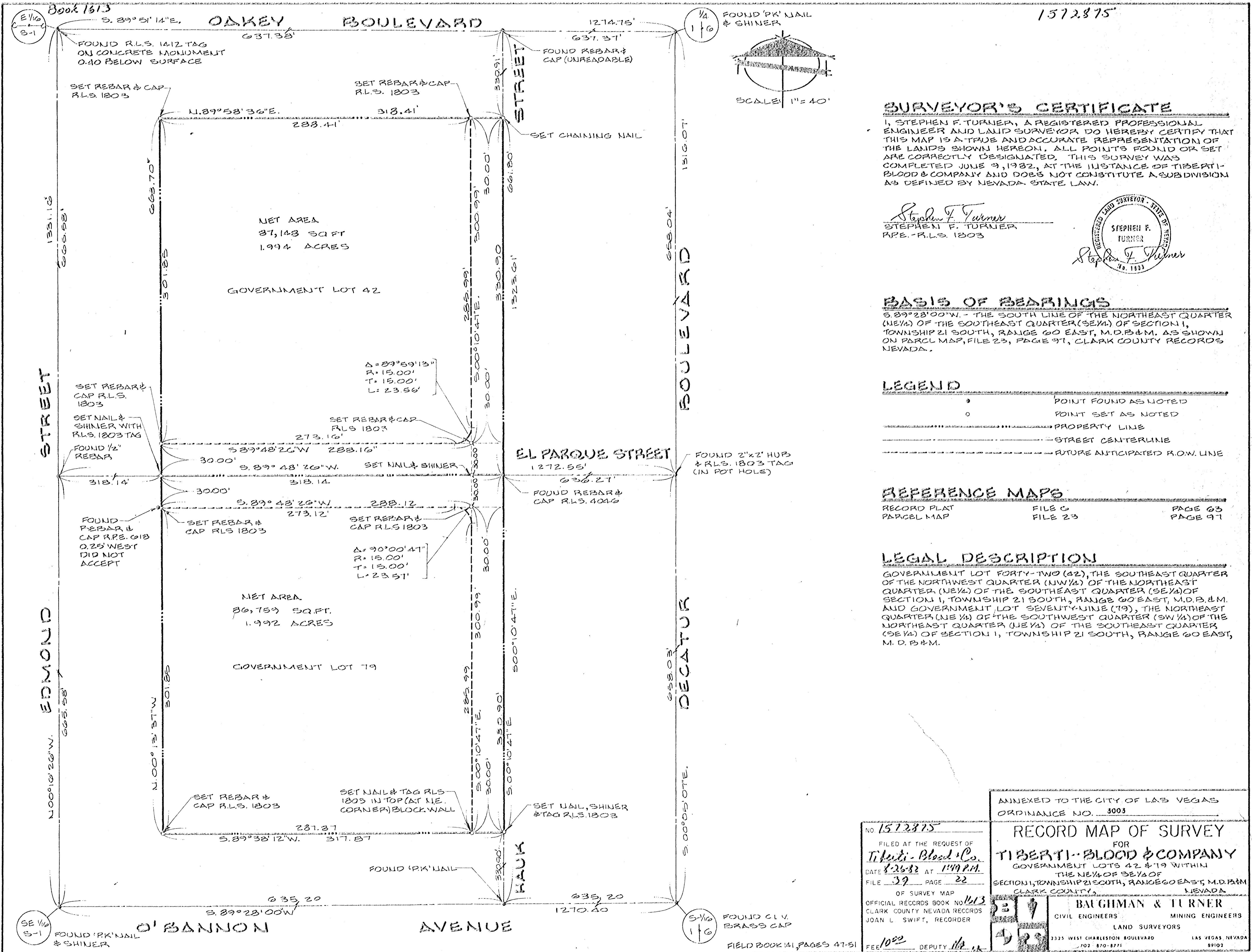
1894

1893

1893

1892

<



1572875

SURVEYOR'S CERTIFICATE

I, STEPHEN F. TURNER, A REGISTERED PROFESSIONAL ENGINEER AND LAND SURVEYOR DO HEREBY CERTIFY THAT THIS MAP IS A TRUE AND ACCURATE REPRESENTATION OF THE LANDS SHOWN HEREON. ALL POINTS FOUND OR SET ARE CORRECTLY DESIGNATED. THIS SURVEY WAS COMPLETED JUNE 9, 1982, AT THE INSTANCE OF TIBERTI-BLOOD & COMPANY AND DOES NOT CONSTITUTE A SUBDIVISION AS DEFINED BY NEVADA STATE LAW.

Stephen F. Turner
STEPHEN F. TURNER
P.E. - R.L.S. 1803



BASIS OF BEARINGS

S. 89° 28' 00" W. - THE SOUTH LINE OF THE NORTHEAST QUARTER (NE 1/4) OF THE SOUTHEAST QUARTER (SE 1/4) OF SECTION 1, TOWNSHIP 21 SOUTH, RANGE 60 EAST, M.D.B.&M. AS SHOWN ON PARCEL MAP, FILE 23, PAGE 97, CLARK COUNTY RECORDS NEVADA.

LEGEND

- POINT FOUND AS NOTED
- POINT SET AS NOTED
- PROPERTY LINE
- STREET CENTERLINE
- FUTURE ANTICIPATED R.O.W. LINE

REFERENCE MAPS

RECORD PLAT	FILE 6	PAGE 63
PARCEL MAP	FILE 23	PAGE 97

LEGAL DESCRIPTION

GOVERNMENT LOT FORTY-TWO (42), THE SOUTHWEST QUARTER (SW 1/4) OF THE NORTHWEST QUARTER (NW 1/4) OF THE NORTHEAST QUARTER (NE 1/4) OF THE SOUTHEAST QUARTER (SE 1/4) OF SECTION 1, TOWNSHIP 21 SOUTH, RANGE 60 EAST, M.D.B.&M. AND GOVERNMENT LOT SEVENTY-NINE (79), THE NORTHEAST QUARTER (NE 1/4) OF THE SOUTHWEST QUARTER (SW 1/4) OF THE NORTHEAST QUARTER (NE 1/4) OF THE SOUTHWEST QUARTER (SW 1/4) OF SECTION 1, TOWNSHIP 21 SOUTH, RANGE 60 EAST, M.D.B.&M.

ANNEXED TO THE CITY OF LAS VEGAS
ORDINANCE NO. 3003

RECORD MAP OF SURVEY
FOR
TIBERTI-BLOOD & COMPANY
GOVERNMENT LOTS 42 & 79 WITHIN
THE NE 1/4 OF SE 1/4 OF
SECTION 1, TOWNSHIP 21 SOUTH, RANGE 60 EAST, M.D.B.&M.
CLARK COUNTY, NEVADA

BAUGHMAN & TURNER
CIVIL ENGINEERS MINING ENGINEERS
LAND SURVEYORS
2325 WEST CHARLESTON BOULEVARD LAS VEGAS, NEVADA
702 870-8771 89102

NO 1572875
FILED AT THE REQUEST OF
Tiberti-Blood & Co.
DATE 8-26-82 AT 1:49 P.M.
FILE 39 PAGE 22
OF SURVEY MAP
OFFICIAL RECORDS BOOK NO. 1613
CLARK COUNTY NEVADA RECORDS
JOAN L SWIFT, RECORDER
FEE 10.00 DEPUTY 11.00